

Study on Radon and Radium Concentrations in Drinking Water in West Region of Iran

¹Gh. Forozani and ²Gh. Soori

¹Department of Physics, Bu-Ali Sina University, Hamedan, Iran

²Payam e Noor University of Mashhad, Mashhad, Iran

Abstract: One of the most important characterizations of social health is existence the availability of safe drinking water. Since, one of the sources of water contamination is nuclear contamination from radon gas so in this research radon 222 concentration levels in water supplies in the Toyserkan (a region located in the West of Iran) is investigated. For measuring radon gas in water wells and springs Lucas chamber method is used. Review the results of these measurements that taken from 15th place show that only five sites have radon concentrations above the limit dose. To reduce radon concentration, it is better to keep water in open pools in contact with air before the water is delivered to users.

Key words: Radon concentration, drinking water, cancer risk, lung dose, stomach dose, prassi system, Toyserkan, Iran

INTRODUCTION

Two major chains of initial radioactive nuclear decay associated with the earth are Th-232 and U-238. Among the radioactive nuclear produced in the two mentioned chains, radium 226 is a product of the U-238 radioactive decay series with half-life about 1600 years that emits alpha particle is very important. Radon 222, the most stable isotope in its family which is used in radio therapy (Turk *et al.*, 1996) and special properties as odourless, colourless, water-soluble and radioactive like-in other 20 isotopes is the daughter of α -disintegration from Ra-226 with a half-life about 92 h can then enter the human body through the respiratory. The total amount of annual effective dose of natural radioactive sources is 2.4 and 1.2 msv nearly belongs to radon and its daughters (Webb, 1992). Radon 222 and its decay products are the most important source of human exposures.

The 2nd natural radon isotope is radon 219 which has a half-life 3.9 sec and is produced from U-235 decay series. The third natural isotope located in the Th-232 decay chain is called Toron with half-life 55.6 sec. When the radon gas to be cooled below the freezing point, it has a bright phosphoric color and in the lower temperature has yellow color. In normal temperature, its color goes to be red orange.

The average concentration of radon in the atmosphere is about one molecule of radon in 10^{21} molecule of air and it is estimated that every square mile

of soil to a depth of 6 inches contains approximately 1 g of radium which decays to radon 222 (Ren *et al.*, 1996.). At least 50% of natural exposures are due to radon gas and its corresponding decay products. Many deaths from digestive and respiratory cancer are caused by radon exposure (Binesh *et al.*, 2011).

According to recent information published by the United Nations Scientific Committee on effects of atomic radiation (UNSCERA, 2008 report) inhalation of radon and its daughters are the most important factors in happening natural human exposure from natural radioactive sources.

RADON IN WATER AND ITS HAZARDS

Once radon in water supplies reaches customers, it may produce human exposure via inhalation and direct digestion. Radon in water transfers into the air during showers, flushing toilets, washing dishes and washing clothes. The aerosols tend to deposit into the lungs where they release radiation that has been shown to increase the likelihood of lung cancer. Radon can also reach other body tissues through ingestion resulting in radiation exposure to the internal organs. Ingestion of radon is believed to increase the risk of stomach cancer.

As stated one kinds of water contamination is due to the existence of radon and this is very important in the quality of drinking water. It is remarkable that if the amount of radon in water is reduced only 40-50% before is delivered to users, it causes that the respiratory and gastrointestinal cancers reduced about 30-35% and in

long term is very important for decreasing remedial cost. Considering the high rate of lung cancer in this region, we had to investigate the amount of radon gas concentration in the water resources. The high rate of lung cancer in this region is the motivation to investigate the amount of radon gas concentration in the water resources.

MATERIALS AND METHODS

Measurement of radon in water samples: The concentration of radon in underground water is more than of spring waters and also deep wells, however if the water is moving more and more the concentration of radon is expected to be further reduced. The investigated water samples are prepared with the outlet source from the lowest level of water depth with in 25 cm of surface water in the reverse pressure conditions.

By keeping the samples in a cold place and at the least time the samples have been transported to laboratory. The samples were taken from 15 places that supply the drinking water and three samples of 330 mL have been taken from each site.

RADON MEASUREMENT SYSTEM

In this research to determine the concentration of radon in water, the PRASSI (Portable Radon Gas Surveyor SILENA) system model 5S has been used. This system has suitable features to measure the concentration of radon gas in the water and weather. The most important characteristics of this system is the high sensitivity and short time response. The detection system has used the scintillation cell coated with Zn S(Ag) with 1830 cm³ volume. This technique is one of the oldest and most reliable procedures for the measurement of radon. PRASSI pumping cycle operate at a constant rate with 3 L min⁻¹. The schematic of measuring PRASSI system is shown in Fig. 1.

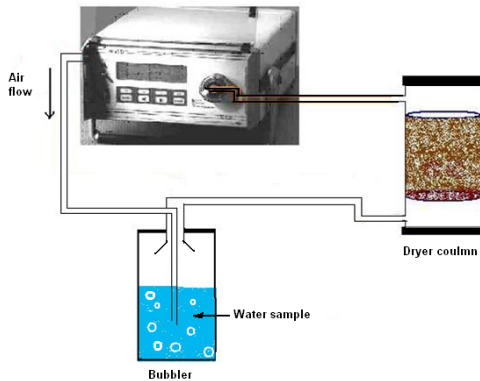


Fig. 1: The schematic of measuring PRASSI system

RESULTS AND DISCUSSION

In this research, radon concentrations in water samples from 15 region of Tuyserkar is measured. The radon and radium concentration in each sample versus kBq m⁻³ and the annual effective dose of stomach, lung and whole body in terms of mSv year⁻¹ have shown in Table 1. The histogram of radon and radium concentration of each sample are shown in Fig. 2 and 3, respectively. The results show that the

Table 1: The radon and radium concentration of each sample (kBq m⁻³) and the annual effective dose of stomach, lung and whole body in terms of mSv year⁻¹

Samples	Concentration (kBq m ⁻³)		Annual effective dose (mSv year ⁻¹)		
	Radon	Radium	Lung (inhalation)	Stomach (ingestion)	Whole body
1	5.915	0.34	15.545	16.503	32.048
2	5.960	-	15.663	16.628	32.291
3	5.971	-	15.692	16.660	32.352
4	6.062	0.34	15.932	16.914	32.846
5	6.582	0.90	17.299	18.365	35.664
6	6.672	0.59	17.534	18.615	36.149
7	6.674	0.49	17.542	18.624	36.166
8	6.745	-	17.727	18.820	36.547
9	6.778	0.4	17.812	18.910	36.722
10	7.195	0.60	18.909	20.075	38.984
11	9.142	1.42	24.026	25.503	49.529
12	10.746	0.93	28.239	29.980	58.219
13	10.942	0.96	30.529	28.757	59.286
14	12.184	2.35	33.755	33.994	67.749
15	14.360	3.14	34.738	40.064	74.802

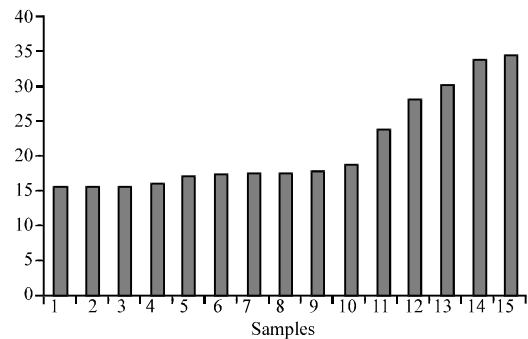


Fig. 2: The histogram of radon concentration (Bq L⁻¹) of each sample (Series 1)

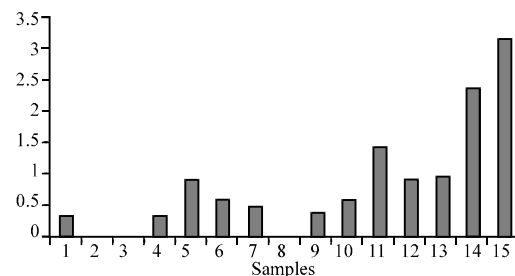


Fig. 3: The histogram of radium concentration (Bq L⁻¹) of each sample

amount of radon in five sites is $>10 \text{ kBq m}^{-3}$. The annual effective dose for stomach and lung are calculated by using the results of Tayyeb *et al.* (1998).

CONCLUSION

Considering that about 50% of natural exposure of people is from radon gas and it is the leading cause of cancer patients suffering respiratory and gastrointestinal systems and the highest percentage of radon that enter the human body is from drinking water and breathing, especially when is bathing, the measuring of radon gas in underground water in this region is done.

The results of this research shows that radon gas concentration in five samples of water used by people have much more than the limit determined by the Environmental Protection Agency America (10 Bq L^{-1}) but it is not very high and the amount of radon exist in water is not a serious hazard risk threaten the region. So for more attention to public health community and reducing the risks of radon gas, it is recommended that

the drinking water must be kept in the open pools or at least moved as a cascade to moving out radon gas.

REFERENCES

- Binesh, A., S. Mohammadi, A.A. Mowlavi and P. Parvaresh, 2011. Measuring radon and radium concentrations in 120 samples of drinking water sources, springs and rivers of shandiz, zoshk and abrdeh regions. *Environ. Res. J.*, 5: 1-5.
- Ren, T., B. Shang, Y. Yu and H. Gu, 1996. Radon-222 Concentration in Water and the Exposure of the Public. IRPA, Vienna, Austria..
- Tayyeb, Z.A., A.R. Kinsara and S.M. Farid, 1998. A study on the radon concentrations in water in Jeddah (Saudi Arabia) and the associated health effects. *J. Environ. Radioact.*, 38: 97-104.
- Turk, M., B. Volari and B. Antolkovic, 1996. Radon activity concentration in the ground and its correlation with the water content of the soil. *Applied Radiat. Isot.*, 47: 377-381.
- Webb, G.A.M., 1992. Exposure to radon. *Radiat. Protect. Dosim.*, 42: 191-195.