

An Effective Model for Resource Provisioning in Cloud Computing

Namatheerdhala Uday and P. Sai Kiran
Department of CSE, KL University, Vaddeswaram, India

Abstract: Distributed cloud computing is being based on top of built up framework innovation ideas. Then again, it is likewise genuine that cloud computing has much to offer to matrix foundations. In this study, we explained to give the capacity to fabricate self-assertive compound network frameworks ready to manage the interest required by any given administration, exploiting the pay per usage method and the apparently boundless limit of the cloud computing worldview. It deals with components that possibly can be utilized to convene a given nature of administration and/or fulfill crest requests this administration might have. These systems infer the versatile development of the lattice framework manufacture utilization of cloud suppliers, paying little mind to whether they are business, similar to GoGrid, Amazon EC2 or experimental as Globus Nimbus. With this innovation of resource provisioning had been exhibited in a test, planned to demonstrate the overheads brought on during the time spent off-load employments to assets made in the cloud.

Key words: GoGrid, bolster, lattice, LRMS, skeleter, GridFTP

INTRODUCTION

Information examination assume a key part in arranging, critical thinking. Information investigation applications ordinarily prepare a lot of information from both operational and authentic information sources and the handling is fundamentally perused just with incidental clump embeds. Information investigation are in this way appropriate to a cloud domain in light of the fact that the preparing can be apportioned and sent on the common nothing engineering gave by a cloud; ACID certifications for consistency are normally not required and the synopsis way of the examinations implies that touchy information can be let well enough alone for the investigation without genuinely affecting results (Mian *et al.*, 2011). Specifically, anybody predicts that the cloud will be a favored arrangement stage for (an) information stockrooms for medium-sized organizations (particularly those that don't as of now have information distribution centers because of the substantial in advance capital costs) for sudden or fleeting business knowledge prerequisites and for open confronting information distribution centers for which information security is not an issue (Abadi, 2009). The primary works about the joint utilization of mists and networks are investigating two principle approaches in particular.

The utilization of virtual machines and mists as a viable approach to give framework clients custom

execution situations. Along these lines the same network site can undoubtedly bolster Virtual Organizations (VOs) with various (or clashing) designs.

The entrance to matrix assets in a cloud-way. In this way, the clients will get to crude passing so as to figure limit the established lattice middleware stack. This methodology is likewise being considered as a characteristic approach to pull in business clients to our present frameworks. The issue we are attempting to address in this study is the need to go to fluctuating and top requests in elite figuring. For example, a supercomputing focus is liable to this need, since, ventures can request assets reliably for tests and they can do as such even at the same time. Also, gathering a Service Level Agreement (SLA) characterizing a Quality of Service (QoS) with the inside's accessible assets can be trying at specific period. The sensible providing of assets model will be utilize to the neighborhood framework to take care of all the current interest if conceivable (i.e., utilizing their undertaking lattice). On the off chance that is insufficient, the abundance burden can be appointed to an accomplice network with which a past plan has been made. This accomplice network does not have to give the same interface as the undertaking lattice, yet, a solitary purpose of access is attractive to the entire combined base. In the event that the processing request still floods the current assets, the middle should utilize a cloud supplier to perform an impermanent increment in its

registering power. A bound together purpose of access is even profitable as more heterogeneous assets are added to the lattice framework. In this study, we will demonstrate a structure for observing administration limit and for developing matrix foundations when it approaches immersion, utilizing cloud suppliers like Amazon EC2 and GoGrid 5 (business) or Globus Nimbus 6 (investigative) and we will indicate observational information on an analysis demonstrating this element development.

Literature review: The thought of a fundamental group which progressively adjusts its range to the workload is not a new. It is being connected for case in the group administration programming called Cluster On Demand (COD) (Anonymous, 2018a) which powerfully distributes servers from a typical group to various virtual bunches. Despite the fact that the objective is comparative, the methodology is totally diverse. COD laborer hubs utilize NFS to mount distinctive programming arrangements. Thus, the VIO bunch (Anonymous, 2018b) venture empowers increasingly sharing so as to modify the limit of processing group assets between correlate areas. Another range investigated these days is the utilization of the current network foundation to manufacture autonomic mists (Anonymous, 2018c). This is accomplished by making virtual situations with their related advantages like adaptability and adjustment, over numerous physical spaces. Using a decentralized private overlay framework schema known as IPOP (IP in P2P). In this design, a gigantic number about skeleton establishments might be changed under versant mists in a non-problematic best approach to the present organize administrations, despite the way that they will a chance to be suitability for serving helter skelter throughput, helter skelter idler tolerant administrations. In any case vast majority swaying improvement to outfit VO for custom execution circumstances may be virtualization. The shocking execution progressions on hypervisor developments constructed it possible with investigate diverse parkways in regards Virtual Machines (VM) as basic fabricating obstructs to computational phases.

A couple investigations by Anonymous (2018d) and Garfinkel (2007) uncover that the virtualization layer need no incredulous impact on the execution for memory What's more CPU-serious provisions for HPC bunches. Those central meets expectations around there facilitated possession organization frameworks for VMs to provide for custom execution circumstances looking into a to each occupation reason. For example, XGE (Walker *et al.*, 2006) also progressive Virtual grouping (Anonymous, 2018e) for MOAB. What's more SGE worth of effort managers independently. These methodologies only thrashing

those setup restrictions of physical stakes on the fact that, VMs would restricted to be provided for advantage. Also, only exist amid occupation execution. A tantamount procedure need been executed (Tsaregorodtsev *at el.*, 2004). In the grid level using those globus grid lifestyle met scheduler grid approach permits the implying of a optional phase preceding the genuine execution phase on perform moved worth of effort setup schedules. In this stage, the approachability of the approached to VM picture in the assembly center will be checked, trading it starting with a GridFTP storage facility on important. During that point in the execution stage, a script starts or restores the VM for a master center what's more sits tight to its establishment by intermittently trying its administrations, also, executes their customer project after those VM may be ready. The framework duplicates every last one of information documents needed to the VM and executes the client program. In any case, subsequent to the fundamental neighborhood asset administration framework doesn't know about the way of the employment itself, a portion of the potential advantages offered by the virtualization innovation (e.g., server solidification) are not completely misused.

MATERIALS AND METHODS

Proposed model: Dynamic provisioning postures different issues. One issue in this area is the significance of interaction, i.e., having the capacity to develop utilizing various kind of given assets, freely of what a boundary might be putting forth. An additional issue has noting the topic of when the dynamic development is vital and how to really carry out it. A third issue can be the implementation of a financial plan on this choice, considering expected CPU and system use. In this area these issues are tended to by method for a lattice base that can be adaptably manufactured that knows about its heap, highlighting a solitary purpose of access and that can join another asset briefly in a programmed design to fulfill overwhelming requests. Figure 1 portrays an engineering of such an answer.

We can see that one of the building squares is the GridWay met scheduler. The adaptable design of this met scheduler permits the utilization of connectors. Albeit having the same interfaces is the perfect approach to accomplish interoperation, once in a while there are diverse middleware's sent in the destinations to be combined and it is unfeasible to bring together them for an assortment of reasons (legislative issues, time imperatives or continuous movement or overhauls). This can be seen as the result of not having an acknowledged standard and thusly, absence of interoperability. One

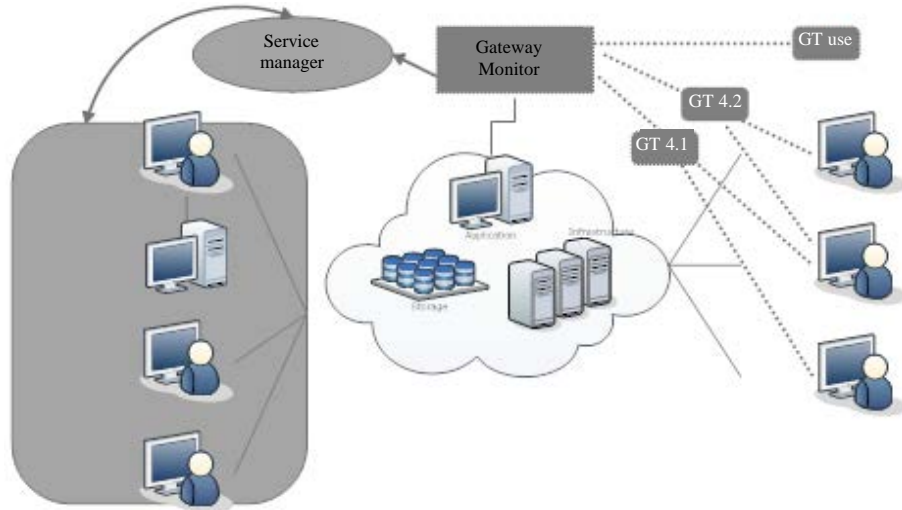


Fig. 1: Architecture for resource provisioning in cloud

conceivable answer for unite these distinctive locales is to manufacture a gateway that uses diverse segments (to submit employments, accumulate data, exchange records, and so on) to interface these destinations. These segments are composed particularly for a specific middleware stack or even form and we can call them connectors. GridWay as of now has various connectors (MADs) that empower access to various generation matrix frameworks. Besides, it additionally gives SSH MADs, so, access to neighborhood assets can be accomplished with diminished overhead, staying away from the need introduced and arranged in the hubs any lattice programming, for example for occasion, the Globus toolkit. The depicted the alliance approach how about we see the planned engineering for element provisioning and whose important segment in the service manager. This part is utilized to screen the GridWay metascheduler and when the heap of the framework surpasses an edge, identified utilizing heuristics, it is capable to develop the accessible lattice foundation utilizing particular connectors to get to various cloud suppliers.

This development can survive refined in two ways. The first is by asking for a number of single hosts. These need a formerly characterized programming setup that will then offer them some assistance with enrolling in the accessible network base. This relates to the utilization of cloud an in Fig. 1. Another probability is to convey a full virtualized bunch with a front-end controlling various slave hubs. This front-end can then enlist itself in the current network foundation, including its ability. The GridWay met scheduler elements systems to powerfully

find new has or locales which can be utilized for this reason. This compares to the utilization of cloud B in the figure.

RESULTS AND DISCUSSION

This trial will be proposed will assess those overhead achieved in the organization about in turn pro center done a virtualized bundle continuously executed over Globus Nimbus. Henceforth with the limit objective about this trial, the virtual pack may be as about notwithstanding continuously executed, also, we need aid measuring those overheads the middle of the different layers for the configuration throughout the time used including an additional pro hub, i.e., those overheads achieved by mixing those worker hub, shutting it down, constantly it distinguished by those SGE, those MDs also, GridWay and the taking care of overhead brought about eventually tom's perusing this center since it may be virtualized. This trial is performed ahead a close-by cloud sent in the lab at DSA-research.org, using Globus Nimbus. Likewise those cloud supervisor with a specific end goal to better comprehend the chain of occasions and where the overheads happen we should see the moves making place when the service manager chooses to add another specialist hub to the framework foundation. A graphical delineation of the trial with measured times can be found in Table 1. To start with the service manager asks for another VM to Nimbus which decides the best hub to run the virtual machine, taking into account the assets asked for (e.g., memory). A short time later if the VM picture

Table 1: Total number of virtual machines provisioned

VM's provisioned	Command time	SGE	Total time(msec)
6.32	0.75	126	133.0
6.87	0.86	145	153.7
7.33	0.68	156	164.0

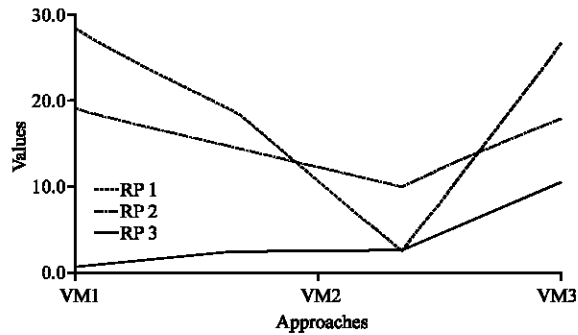


Fig. 2: Resource provision with proposed approach

(machine) is not nearby to the host framework, it gets to the picture server through a suitable convention (e.g., GridFTP) and gets a duplicate.

Once the picture has been exchanged, the physical hub's DHCP server design record is adjusted keeping in mind the end goal to build up hostname and VM's IP. At the point when these operations finish up, the VM is booted. At the point when the VM has been conveyed and is running, it registers on the LRMS front-end as an execution host. After a given time, the Matrix Data framework (MDs) identifies the new hub and distributes it.

Figure 2 shows that the proposed approach has better resource provision than earlier methods. At long last, the GridWay met scheduler will invigorate the data of the accessible lattice assets and identify the new specialist hub. At that point as indicated by the booking arrangements, it will apportion occupations on this new asset by interfacing with the lattice execution administration (GRAM). The conduct of the past arrangement system will be broke down on a test bed in light of Globus Toolkit 4.0.3 and GridWay 5.2.1.

CONCLUSION

This study opens the way for various examination lines to be taken after and improvements to be finished. From one viewpoint there is space for the advancement of new connectors for the GridWay to get to a more prominent number of various sorts of framework bases. Then again, the issue postured by the need to calendar

workloads over a few lattice frameworks needs heuristics to be created. The said heuristics should be actualized in the metascheduler and use data assembled by it to choose which base to send the occupation to, considering their workload their equipment qualities, work execution history and even client or gathering amounts. Additionally, there is likewise work to be done in the heuristics expected to tune the service manager. This part should know about the qualities of the administration being offered to accurately change its ability on account of an interest increment. In light of history, the service manager could even foresee a top request and prepares the administration for it, adding assets to the matrix framework. It is likewise pivotal that the heuristics work upon a financial model that knows distinctive cloud supplier attributes to achieve an exchange off between administration proficiency and cost.

REFERENCES

Abadi, D.J., 2009. Data management in the cloud: Limitations and opportunities. *IEEE. Data Eng. Bull.*, 32: 3-12.

Anonymous, 2018a. AWS auto scaling application scaling to optimize performance and costs. Amazon Web Services, Inc., Seattle, Washington, USA. <http://aws.amazon.com/autoscaling/>.

Anonymous, 2018b. Amazon Elastic Block Store (EBS). Amazon Web Services, Inc., Seattle, Washington, USA. <http://aws.amazon.com/ebs/>.

Anonymous, 2018c. Amazon S3 customer case studies. Amazon Web Services, Inc., Seattle, Washington, USA. <http://aws.amazon.com/s3/>.

Anonymous, 2018d. Amazon cloud watch. Amazon Web Services, Inc., Seattle, Washington, USA. <http://aws.amazon.com/cloudwatch/>.

Anonymous, 2018e. Amazon elastic compute cloud (Amazon EC2). Amazon Web Services, Inc., Seattle, Washington, USA. <http://aws.amazon.com/ec2/>.

Garfinkel, S., 2007. An evaluation of Amazon's grid computing services: EC2, S3 and SQS. Master Thesis, Computer Science Group, Harvard University Cambridge, Massachusetts.

Mian, R., P. Martin, A. Brown and M. Zhang, 2011. Managing Data-Intensive Workloads in a Cloud. In: *Grid and Cloud Database Management*, Fiore, S. and G. Aloisio (Eds.). Springer, Berlin, Germany, ISBN:978-3-642-20044-1, pp: 235-258.

Tsaregorodtsev, A., V. Garonne and I. Stokes-Rees, 2004. DIRAC: A scalable lightweight architecture for high throughput computing. Proceedings of the 5th IEEE/ACM International Workshop on Grid Computing, November 08, 2004, IEEE, Washington, DC., USA., pp: 19-25.

Walker, E., J.P. Gardner, V. Litvin and E.L. Turner, 2006. Creating personal adaptive clusters for managing scientific jobs in a distributed computing environment. Proceedings of the 2006 IEEE International Conference on Challenges of Large Applications in Distributed Environments, June 19, 2006, IEEE, Paris, France, ISBN:1-4244-0420-7, pp: 95-103.