

A Particle Swarm Optimization with Random Particles and Fine-Tuning Mechanism for Nonconvex Economic Dispatch

Ming-Tang Tsai and Chin-Wei Yen
Department of Electrical Engineering, Cheng-Shiu University,
Kaohsiung, R.O.C., Taiwan

Abstract: This study presents a new approach to the economic dispatch problems with valve-point effects. The practical economic dispatch problem has a nonconvex cost function with equality and inequality constraints that it is difficult to find the optimal solutions using any mathematical approaches. A Particle Swarm Optimization (PSO) with Random Particles and Fine-tuning mechanism (PSO-RPFT) is proposed to solve economic dispatch problem. The proposed developed in such a way that PSO with Constriction Factor (PSO-CF) is applied as a based level search which can give a good direction to the optimal global region. Random particles and fine-tuning mechanism is used as a fine tuning to determine the optimal solutions at the final. Effectiveness of the proposed method is demonstrated on 3 example systems and compared to that of SA, GA, EP. Results show that the proposed method is more effective in solving economic dispatch problem.

Key words: Economic dispatch, fine-tuning mechanism, particle swarm optimization, valve-point effect, CF, Taiwan

INTRODUCTION

Typical Economic Dispatch (ED) is to minimize total fuel cost subjected to several unit and system constraints. In the traditional ED problem, the generator cost functions were mostly approximated by piece-wise linear functions (Lin and Viviani, 1984). By considering the units with valve-point effects, the conventional process either ignores or flattens out these portions which could induce inaccurate results.

Recently, stochastic optimization techniques such as including the Simulated Annealing (SA) (Wong and Fung, 1993; Mantawy *et al.*, 1998), the Genetic Algorithms (GA) (Walters and Sheble, 1993; Bakirtzis *et al.*, 1994), Evolutionary Programming (EP) (Yang *et al.*, 1996; Jayabarathi *et al.*, 2005; Sinha *et al.*, 2003), Particle Swarm Optimization (PSO) (Selvakumar and Thanushkodi, 2007; Victoire and Jeyakumar, 2004; Park *et al.*, 2005) and Taguchi method (Liu and Cai, 2005) were applied to solve this problem. However for highly complex problems, these applications involved a wide solution space and the large number of searching and iterations were susceptible to related control parameters.

The efficiency will be affected and downgraded. Particle Swarm Optimization (PSO) based on the analogy of swarm of bird and fish school is developed by Kennedy and Eberhart (1995). In PSO, each individual searches a space by adjusting the trajectories of moving

points in a multi-dimensions space and exchanges pervious experiences for find a better direction. PSO can generate the high-quality solutions within shorter calculation time and stable convergent characteristics. In past, PSO had been successfully applied to various fields of power system optimization (El-Dib *et al.*, 2006; Wang and Singh, 2008; Kannan *et al.*, 2004; Yuan *et al.*, 2007). The disadvantage of the original PSO will be easily trapped the local optimum and takes a long computation time for finding the solution.

Shi and Eberhart (1998) proposed the Particles Swarm Optimization with Inertia Weighted (PSO-IW) for promoting the convergent rapid and the searching performance. Angeline (1998) combined the selection mechanism and PSO to promote the searching rapid and location of particles for finding better solution. The Particle Swarm Optimization with Constriction Factor (PSO-CF) (Clerc and Kennedy, 2000) used a constriction factor to control the trace of particles without considering the velocity of particles.

Shi and Eberhart (1998) have a low fine tuning ability of the solution when the converging solution arrived at the beginning of the run and a local search near the end of the run. Therefore, there are more possibilities to explore local optimum if the problem has more local optima. In this study, a Particle Swarm Optimization with Random Particles and Fine-Tuning mechanism (PSO-RPFT) is proposed to overcome this drawback. PSO-RPFT

introduces 2 operators, Random particles and fine-tuning into the PSO algorithm for increasing the search ability.

The process of random particles will add the proper random particle into the whole particles when the solution is searched in the each generation. The procedure of fine-tuning will regulate the best position of group if the generation will be searched on the late period of PSO algorithm.

The study of fine-tuning during the tuning mechanism can be employed in the algorithm to make the search method more efficient at the end of search and the success rate of the searching global optimum could be increased. Effectiveness of the proposed method is demonstrated on three example systems and compared to that of SA, GA, EP and previous publications. Results show that the proposed method is more effective in solving economic dispatch problem.

PROBLEM FORMULATION

The ED problem can be modeled as an optimization process with following objective function and constraints:

$$\text{Objective function } C_T = \text{Min.} \sum_{i=1}^N C_i(P_{gi}) \quad (1)$$

subject to power balance constraints;

$$\sum_{i=1}^N P_{gi} = P_{load} \quad (2)$$

generating capability constraints;

$$P_{gi, \min} \leq P_{gi} \leq P_{gi, \max} \quad (3)$$

Where:

C_T = Total production cost (\$ h⁻¹)

N = No. of generation unit

$C_i(P_{gi})$ = Generation cost of power for the i th unit (\$ h⁻¹)

P_{load} = Total load demand (MW)

$P_{gi, \min}$ = Lower limit of the real power of the i th unit (MW)

$P_{gi, \max}$ = Upper limit of the real power of the i th unit (MW)

The fuel cost functions of generating units are characterized (Sinha *et al.*, 2003):

$$C_i(P_{gi}) = a_i + b_i P_{gi} + c_i P_{gi}^2 + |e_i \times \sin(f_i (P_{gi, \min} - P_{gi}))| \quad (4)$$

a_i, c_i are the fuel cost coefficients of the i th unit. e_i, f_i are the fuel cost coefficients with valve-point effects. Basically, these fuel cost functions of generating units are the nonconvex functions. The associated incremental costs are not continuously or monotonically increasing. Multiple local optimal will exist in the objective function.

RANDOM PARTICLES AND FINE-TUNING MECHANISM

Brief of particles swarm optimization: In a PSO system, birds (particles) flocking optimizes a certain objective function. Each agent knows its best value so far (pbest) and its position. This information is analogy of personal experiences of each agent. Moreover each agent knows the best value so far in the group (gbest) among other agents around them have performed. In this study, PSO-CF was selected to trace the pbest value and gbest value. Using the PSO-CF, the velocity can be represented under the Eq. 5 in the PSO algorithm. Using the Eq. 5, a certain velocity can be calculated due to the position of individuals gradually close to pbest and gbest. The current position can be modified by Eq. 6:

$$V_{gi}^{j+1} = K \times [V_{gi}^j + c_1 \times \text{rand}() \times (\text{pbest}_{gi}^j - P_{gi}^j) + c_2 \times \text{rand}() \times (\text{gbest}^j - P_{gi}^j)] \quad (5)$$

$$P_{gi}^{j+1} = P_{gi}^j + V_{gi}^{j+1} \quad (6)$$

Where:

$$K = \frac{2}{|2 - c - \sqrt{c^2 - 4c}|}, \quad c = c_1 + c_2, \quad c > 4$$

Where:

c_1, c_2 = Acceleration constant ($c_1 = c_2 = 2.05$)

$\text{rand}()$ = Uniform random value with a range of [0, 1]

P_{gi}^j = Dimension g of the position of particle i at iteration j

V_{gi}^j = Dimension g of the velocity of particle i at iteration j

pbest_{gi}^j = Dimension g of the own best position of particle i at iteration j

gbest^j = Dimension g of the best particle in the swarm at iteration j

Random particle: In the PSO procedure, we can select particles from the set number of particles in a proper ratio as the random particles. These random particles are independent from the vector or positions obtained from individual or population particles. The search of random particles is conducted randomly in the whole space. The random particles have the ability of global search in the

entire design space thus, they are expected to search the spaces not reached by its population. Besides the random particles, the remaining particles in the population update the information according to their velocities and positions. This study will not adopt pbest and gbest when setting random particles for position updating. The particles thus conduct random search in the design space. The formulation of random particle is expressed as follows:

$$P_{gt}^{j+1} = (P_{gt, \max} - P_{gt, \min}) \times \text{rand}() + P_{gt, \min} \quad (7)$$

In this study, initial particle set to 30 and random particle set to 5. If the random particles cannot find better fitness functions when searching the solution space, the remaining particles of the population will keep searching according to the velocity and position updating rule. Thus if random particles can be selected properly, the original search ability of the population will not be affected.

Fine-tuning mechanism: At the end of the search period, the population of particle swarm algorithm would move toward the optimal solution slowly due to the increasing similarity between pbest and gbest. It takes longer operating time thus, fine-tuning mechanism can be employed in the algorithm to make the search method more efficient at the end of search and the success rate of the algorithm in searching for the optimal solution could be increased.

Execution discriminant of fine-tuning mechanism: It is not required to execute the fine-tuning mechanism in each iteration, the fine-tuning operation is carried out only when the set discriminant value ($p_{gt}\text{fit}$) of directional function and the iteration interval s are met. In this study, the directional function value ($p_{gt}\text{fit}$) of dimension g at i th iteration is adopted as the discrimination condition. The directional function value of ($p_{gt}\text{fit}$) can be expressed as follows:

$$P_{gt}\text{fit} = \frac{|F|}{|P|} \quad (8)$$

Where:

$$F = f_{gt}^{j+s} - f_{gt}^j$$

And:

$$P = p_{gt}^{j+s} - p_{gt}^j$$

f_{gt}^j is the fitness function of dimension g of the position of particle i at iteration j . Before the execution of fine-tuning mechanism, we need to preset the value ($P_{gt}\text{fit}$)

and the iteration interval s which are regarded as the discrimination condition for starting the fine-tuning. After s iterations whether the directional function value of f_{gt} is less than or equal to preset the value ($P_{gt}\text{fit}$) is determined if yes, the population will skip normal executive process of iteration and turn to the fine-tuning mechanism for fine-tuning operation, otherwise it will resume the original iterative operation process.

Fine-tuning operational method: In the fine-tuning mechanism, gbest is treated as the object for fine-tuning mechanism in order to find solutions better than gbest in the fine-tuning region nearby gbest. The formulation of fine-tuning mechanism is expressed as follows:

$$P_{gt}^j = gbest^j + \frac{\|gbest^j - gbest^{j-1}\|}{\sqrt{n}} \times [2 \times \text{rand}() - 1] \quad (9)$$

n : dimension of P_{gt}^j

Each fine-tuning particle p_{gt} is calculated to find the adaptive value (f_{gt}) of the objective function and all fine-tuning particles are sequenced. The optimal fine-tuning particle $P_{gt, \min}$ and its corresponding optimal fine-tuning adaptive value function $f_{gt, \min}$ are selected. If $f_{gt, \min}$ is better than the optimal adaptive value function f_{gt} of the original population, the optimal adaptive value function f_{gt} of the original population and the optimal design value gbest^f will be replaced by adaptive value function $f_{gt, \min}$ corresponding to the optimal fine-tuning particle and its position P_{gt} in the solution space.

The procedure of proposed algorithm: A flowchart of the PSO-RPFT is briefly shown in Fig. 1. The detail of PSO-RPFT can be described as follows. Set the particle population, random particle population, number of iterations, iteration interval s decide value of directional function $P_{gt}\text{fit}$. During the execution of iteration determine the decision value of directional function $P_{gt}\text{fit}$ and the iteration interval s which are regarded as the discrimination condition for starting the fine-tuning operation. After s iterations whether the f_{gt} directional function value $P_{gt}\text{fit} \leq P_{gt}\text{fit}$ is judged if yes, the population will skip normal executive process of iteration and turn to step 7 for fine-tuning operation otherwise, it will resume the original iterative operation process.

Calculate the optimal objective function adaptive value (fit_i) of particle in the design space. Compare the function adaptive value (fit_i) obtained by the particle with pbest function adaptive value ($\text{fit}_i, \text{pbest}$) searched in the design space if the position of $\text{fit}_i, \text{pbest}$ is better than that of function adaptive value (fit_i), a replacement shall be performed otherwise, this step is skipped. After step 4

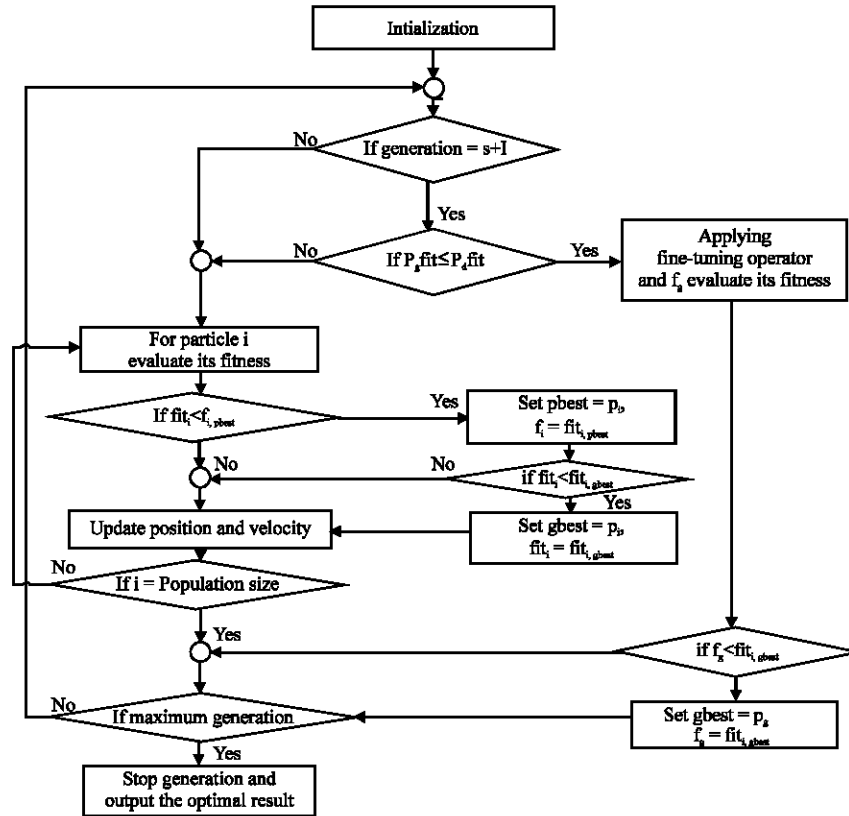


Fig. 1: The flowchart of the PSO-RPET

and the replacement is carried out, compare with the gbest function adaptive value ($fit_{i, gbest}$) which has been searched in the design space. If the position of $fit_{i, gbest}$ is better than the optimal function adaptive value obtained through step 4 then a replacement shall be carried out otherwise this step is skipped.

The function adaptive value of random particle population updates its speed and position according to Eq. 7 and the other particle populations update the speed and positions according to Eq. 5 and 6. If PSO-RPFT algorithm meets the condition of step 2 then gbest shall be regarded as the object for fine-tuning operation and the fine-tuning particle population will calculate the function adaptive value according to Eq. 9.

Compare the function adaptive value obtained from the fine-tuning operation of step 7 with the function adaptive value prior to the fine-tuning if the former is better, a replacement shall be carried out otherwise, it is skipped.

The number of iterations is regarded as the stop condition, the iteration shall be stopped when the number is reached and the optimal objective function adaptive value is exported otherwise, return to step 2 and continue the iterations.

CASE STUDY

PSO-RPFT is numerically tested on three cases of ED problem. The associated fuel cost coefficients are adapted from (Sinha *et al.*, 2003). Each optimization method (PSO-RPFT, PSO, SA, GA and EP) is implemented with Matlab language on a PIV-2.6 GHZ computer with 512 MB RAM.

Generating units: This case includes three generating units with nonconvex cost functions. In this case, the load demand is 850 MW. About 100 generations is set in this case as the stopping criteria. To verify the performance of PSO-RPFT, PSO, SA, GA and EP methods are adapted to test on same case as shown in Table 1. About 100 test runs are conducted for each method. From the Table 1, PSO-RPFT has more probability to reach optimal solution for each trial test. Other evolutionary algorithms for each trial test are often converged to the different optimum. The no. of reaching optimum and the average execution time of each trial test are 32 and 0.3268 sec. It is obvious that the performance of PSO-RPFT is better than other evolutionary algorithms. The convergent characteristics of different methods are shown in Fig. 2.

Table 1: Simulation results of 3 generating units with different methods

Generating units	PSO	PSO-RPFT	SA	GA	EP
Worst (\$ h ⁻¹)	8253.884	8250.472	8286.671	8434.020	8289.681
Average (\$ h ⁻¹)	8241.163	8240.595	8252.725	8287.483	8249.409
Best (\$ h ⁻¹)	8234.073	8234.072	8234.135	8234.419	8234.135
No. of trial reaching optimum	26	32	4	2	10
Average execution time (sec)	0.3104	0.3268	0.1828	0.5083	0.5094

Table 2: Robust test of 13 generating units with different methods

Generating units	PSO	PSO-RPFT	SA	GA	EP
Worst (\$ h ⁻¹)	18280.871	18245.384	18245.384	18586.885	18575.500
Average (\$ h ⁻¹)	18130.797	18116.586	18116.586	18299.255	18283.772
Best (\$ h ⁻¹)	18025.525	17976.015	17982.368	18158.994	18100.261
No. of trial reaching optimum	18	24	6	5	6
Average execution time (sec)	4.6384	5.7441	10.9568	11.1013	8.6657

Table 3: The generation output and the corresponding cost

Units	P _{i, min} (MW)	P _{i, max} (MW)	Generation (MW)	Cost (\$ h ⁻¹)
1	0	680	448.7999	4241.6864
2	0	360	225.4622	2172.6343
3	0	360	226.4388	21863.9769
4	60	180	109.8788	1129.6947
5	60	180	109.8700	1129.5380
6	60	180	109.8918	1129.9283
7	60	180	159.7392	1559.1131
8	60	180	109.8748	1129.6255
9	60	180	109.8698	1129.5345
10	40	120	40.0148	474.7989
11	40	120	40.1083	476.4097
12	55	120	55.0197	607.9321
13	55	120	55.0319	608.1424
Total generation and cost			1800.0000	17976.0149

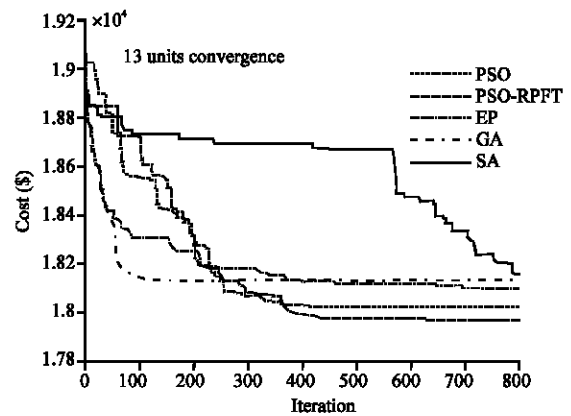


Fig. 3: The convergent characteristics of the different methods

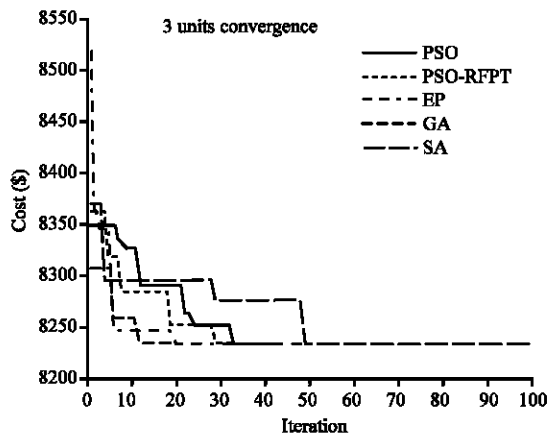


Fig. 2: The convergent characteristics of the different methods

Case-2 consists of 13 generating units which has nonconvex functions with valve-point effects. The load demand is 1800 MW. About 800 generations is set in this case as the stopping criteria. Table 2 shows the robust test for all methods. Each method is executed by 100 trials. The best converged cost of the PSO-RPFT is 17976.015 the average execution time of each test is 5.7441 sec. The

average execution time and the no. of trial reaching optimal have obviously better searching efficiency than other evolutionary algorithms. Due to the converged cost can reach the smaller value than other evolutionary algorithms, it is a better probability to guarantee a global optimum. From the Table 2, it can be proved that PSO-RPFT is a better performer in terms of solution quality, execution time and improving the searching performances. The generation output and the corresponding cost of the best solution can be shown in Table 3. Figure 3 is the convergent characteristics of the different methods.

Generating units: Case-3 has 40 generating units which is a large system with more nonlinearity. The load demand is 10500 MW. Total 1000 generations is set in this case as the stopping criteria. Table 4 shows the robust test with different methods.

Each method is also executed by 100 trials. The average cost of the PSO-RPFT is \$122813.371 and the average execution time of each test is 29.9832 sec. Table 5 shows the results of PSO-RPFT are compared

Table 4: The robustness test for all methods

Generating units	PSO	PSO-RPFT	
Worst (\$ h ⁻¹)	123730.032	123571.798	
Average (\$ h ⁻¹)	122958.562	122813.371	
Best (\$ h ⁻¹)	122473.126	122083.612	
No. of trial reaching optimum	11	15	
Average execution time (sec)	25.2970	29.9832	
	SA	GA	EP
Worst (\$ h ⁻¹)	123962.6070	123531.1440	128786.7670
Average (\$ h ⁻¹)	123170.7990	122929.3560	126166.2050
Best (\$ h ⁻¹)	122218.0170	122293.7130	124152.2070
No. of trial reaching optimum	2.0000	1.0000	1.0000
Average execution time (sec)	55.0468	34.2876	45.9765

Table 5: Comparison of simulation results

Results	Minimal cost (\$ h ⁻¹)
CEP (Sinha <i>et al.</i> , 2003)	123488.290
FEP (Sinha <i>et al.</i> , 2003)	122679.710
MFEP (Sinha <i>et al.</i> , 2003)	122647.570
IFEP (Sinha <i>et al.</i> , 2003)	122624.350
MPSO (Park <i>et al.</i> , 2005)	122252.265
TM (Liu and Cai, 2005)	122477.780
PSO-RPFT	122083.612

Table 6: The number of convergent cost range for each trail test

Factors	Range of cost (×1000\$ h ⁻¹)				
	127.0-126.5	126.5-126.0	126.0-125.5	125.5-125.0	125.0-124.5
CEP	10	4	-	16	22
FEP	6	-	4	2	10
MFEP	-	-	-	-	-
IFEP	-	-	2	-	4
TM[-	-	-	-	2
PSO	-	-	1	3	8
PSO-RPFT	-	-	-	-	6
	124.5-124.0	124.0-123.5	123.5-123.0	123.0-122.5	122.5-122.0
CEP	42	4	2	-	-
FEP	20	26	24	6	-
MFEP	14	26	50	10	-
IFEP	4	18	50	22	-
TM[2	12	52	22	10
PSO	14	25	22	19	8
PSO-RPFT	10	23	26	23	12

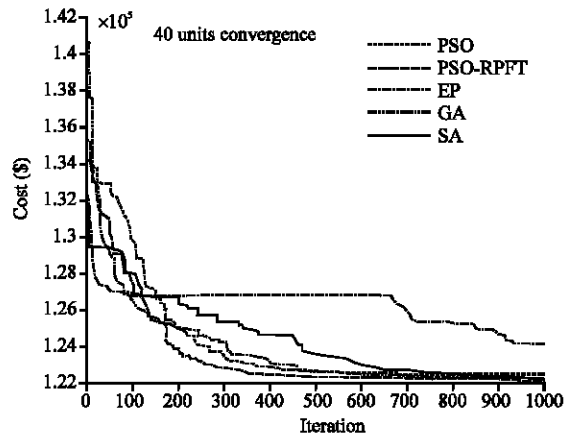


Fig. 4: The convergent characteristics of the different methods

with the results of pervious algorithms by Sinha *et al.* (2003), Park *et al.* (2005) and Liu and Cai (2005) such as Classical EP (CEP), Fast EP (FEP), Modified FEP (MFEP), Improved FEP (IFEP), Modified PSO (MPSO) and Taguchi Method (TM). Although, the solution is not guaranteed to be the global optimum, the superiority of PSO-RPFT has been still shown in Table 5. To compare the results with pervious algorithms in a statistical manner, the relative probability of convergence is provided for each range of cost as shown in Table 6. From the Table 6, PSO-RPFT can observe the more robustness than other evolutionary algorithms. Figure 4 is the convergent characteristics of the different methods.

CONCLUSION

A PSO-RPFT for solving the economic dispatch problem with valve-point effects is presented in this study. Many nonlinear characteristics of units could be handled properly in PSO-RPFT procedure with a reasonable time. Instead of deterministic rules, PSO-RPFT is using a random particle and fine-tuning mechanism technique to enhance the searching performance that leads to a higher probability toward obtaining the global optimum. Test results reveal that the solutions can reach a better value in each trail test. With the advantages of both heuristic ideals and AI, PSO-RPFT has the conventional ideals in 3 fold: the complicated problem is solvable with a better performance than AI and the more likelihood to get a global optimum than heuristic methods. PSO-RPFT is first developed to be applied in ED problem. It has great potential to be further applied to many ill-conditioned problems in power system planning and operation.

REFERENCES

Angeline, P.J., 1998. Using selection to improve particle swarm optimization. Proceedings of the International Conference Evolutionary Computation Intelligence, May 4-9, Anchorage, AK, USA., pp: 84-89.

Bakirtzis, A., V. Petridis and S. Kazarlis, 1994. Genetic algorithm solution to the economic dispatch problem. IEE Proc. Gene. Trans. Distribut., 141: 377-382.

Clerc, M. and J. Kennedy, 2000. The particle swarm: Explosion, stability, can convergence in a multimodal complex space. Proc. Cong. Evolutionary Comput., 6: 58-73.

El-Dib, A., A. Youssef, K.M. Hosam and M.M. El-Metwally, 2006. Maximum loadability of power systems using hybrid particle swarm optimization. Electric Power Syst. Res., 76: 485-492.

- Jayabarathi, T., K. Jayaprakash, D.N. Jeyakumar and T. Raghunathan, 2005. Evolutionary programming techniques for different kinds of economic dispatch problems. *Electrical Power Syst. Res.*, 73: 169-176.
- Kannan, S., S. Slochanal, P. Subbaraj and N. Padhy, 2004. Application of particle swarm optimization technique and its variants to generation expansion planning problem. *Electric Power Syst. Res.*, 70: 203-210.
- Kennedy, J. and R.C. Eberhart, 1995. Particle swarm optimization. *Proc. IEEE Int. Conf.*, 27: 1942-1948.
- Lin, C.E. and G.L. Viviani, 1984. Hierarchical economic dispatch for piecewise quadratic cost functions. *IEEE Trans. Power Apparatus Syst.*, 103: 1170-1175.
- Liu, D. and Y. Cai, 2005. Taguchi method for solving the economic dispatch problem with nonsmooth cost functions. *IEEE Trans. Power Syst.*, 20: 2006-2014.
- Mantawy, A.H., Y.L. Abdel-Magid and S.Z. Selim, 1998. A simulated annealing algorithm for unit commitment. *IEEE Trans. Power Syst.*, 13: 197-204.
- Park, J.B., K.S. Lee, J.R. Shin and K.Y. Lee, 2005. A particle swarm optimization for economic dispatch with nonsmooth cost functions. *IEEE Trans. Power Syst.*, 20: 34-42.
- Selvakumar, A.I. and K. Thanushkodi, 2007. A new particle swarm optimization solution to nonconvex economic dispatch problem. *IEEE Trans. Power Syst.*, 22: 42-51.
- Shi, Y. and R. Eberhart, 1998. A modified particle swarm optimizer. *Proceedings of the IEEE Congress on Evolutionary Computation*, May 4-9, Piscataway, New Jersey, pp: 69-73.
- Sinha, N., R. Chakrabarti and P.K. Chattopadhyay, 2003. Evolutionary programming techniques for economic load dispatch. *IEEE Trans. Evolutionary Comput.*, 7: 83-94.
- Victoire, T. and A. Jeyakumar, 2004. Hybrid PSO-SQP for economic dispatch with valve-point effect. *Electric Power Syst. Res.*, 71: 51-59.
- Walters, D.C. and G.B. Sheble, 1993. Genetic algorithm solution of economic dispatch with valve point loading. *IEEE Trans. Power Syst.*, 8: 1331-1352.
- Wang, L. and C. Singh, 2008. Stochastic combined heat and power dispatch based on multi-objective particle swarm optimization. *Int. J. Electrical Power Energy Syst.*, 30: 226-234.
- Wong, K.P. and C.C. Fung, 1993. Simulated annealing based economic dispatch algorithm. *IEE Proc.*, 140: 509-515.
- Yang, H.T., P.C. Yang and C.L. Huang, 1996. Evolutionary programming based economic dispatch for units with non-smooth fuel cost function. *IEEE Trans. Power Syst.*, 11: 112-118.
- Yuan, Y., X. Yuan and J. Wang, 2007. Short-term hydro-thermal scheduling using particle swarm optimization method. *Energy Conversion Manage.*, 48: 1902-1908.