

Tensile Properties of NFRP Hybrid Composite: Modeling and Optimization

¹R. Prasanna Venkatesh, ²K. Ramanathan and ¹S. Rama Krishnan

¹SACS MAVMM Engineering College, Madurai, Tamil Nadu, India

²A.C. College of Engineering and Technology, Karaikudi-4, Tamil Nadu, India

Abstract: The modeling and optimization techniques are becoming more popular in engineering design activities because of the availability and affordability of high-speed computers. In this present contribution, a new attempt was made to predict and optimize the tensile property of short roselle and sisal fiber hybrid polyester composite using Neuro-Fuzzy Modeling and Genetic Algorithm Method. The better tensile property with optimum fabrication parameters were obtained by using single objective optimization method of Genetic Algorithm (GA). The tensile property of the natural fiber hybrid polyester composite can be predicted and optimized using Neuro-Fuzzy modeling as a potential modeling technique and Genetic algorithm within the ranges of fabrication parameters.

Key words: Natural fibers, polymer-matrix composites, mechanical properties, neuro-fuzzy, Genetic algorithm

INTRODUCTION

Generally the natural fibers are easily available, low price, recyclable, high specific strength and enough modulus material. In recent years, the natural fiber reinforced polymer composites have more attention and interest for development of environmental friendly material and partly replacing currently used glass or carbon fibers in fiber reinforced composites (Li *et al.*, 2008; Rao, 2002a, b). The natural fiber hybrid composites of sisal/silk unsaturated polyester based hybrid composites with different fiber lengths were fabricated using Hand Lay-Up Method. Variation of mechanical properties such as tensile, flexural and compressive strengths of these composites with different fiber lengths were studied. The effect of alkali treatment on the tensile, flexural and compressive properties of the sisal/silk hybrid composites were studied (Noorunnisa *et al.*, 2007; Pongsathorn *et al.*, 2011). Mechanical properties such as tensile, flexural, impact and dynamic mechanical thermal analysis of novolac type phenolic composites reinforced with jute/cotton hybrid woven fabrics were investigated as a function of fiber orientation and roving/fabric characteristics. It was concluded that this combination of natural fibers is suitable to product composites for lightweight structural applications (De Medeiros *et al.*, 2005). The static and dynamic mechanical properties of kenaf fibers and wood flour hybrid polypropylene composite were studied (Tajvidi, 2005; Alsina *et al.*, 2005).

The tensile strength of plain weave hybrid ramie-cotton fabrics polyester matrix composites was determined as a function of the volume fraction and orientation of the ramie fibers (Paiva Jr. *et al.*, 2004). The dynamic properties such as the storage modulus, damping behaviour and static mechanical properties such as tensile, flexural and impact of randomly oriented intimately mixed short banana/sisal hybrid fiber reinforced polyester composites as a function of total fiber volume fraction and the relative volume fraction of the two fibers were investigated (Idicula *et al.*, 2005). The effects of concentration and modification of fiber surface in sisal/oil palm hybrid fiber reinforced rubber composites have been studied (Jacob *et al.*, 2004). A neural network was used for the prediction of yarn properties, especially tenacity and breaking elongation and a Genetic algorithm was used to optimize the input parameters (Sette *et al.*, 1997). The prediction performance of linear regression, ANN and Neuro-Fuzzy Systems were compared for the prediction of cotton yarn tensile properties (Majumdar *et al.*, 2005a, b).

Design of experiments: The 3^k factorial design is the most widely used factorial design having three levels for each of 'k' factors. The three levels of factors are referred to as low (-1), intermediate (0) and high (+1). If there are three factors under study and each factor is at three levels arranged in a factorial experiment then this constitutes a 3³ factorial design. Each main effect has two degrees of freedom each two-factor interaction has four degrees of

freedom. If they are n replicates then there are $(n \times 3^3 - 1)$ degrees of freedom and $3^3(n-1)$ degrees of freedom for error (Pongsathorn *et al.*, 2011).

Neuro-Fuzzy and Genetic algorithm: Neuro-Fuzzy modeling refers to the way of applying various learning techniques developed in the neural network literature to fuzzy modeling. The Neuro-Fuzzy Systems have potential to capture the benefits of both the fascinating fields into a single frame-work. This system eliminates the basic problem in fuzzy system design (i.e., obtaining a set of fuzzy if-then rules) by effectively using the learning capability of an ANN for automatic fuzzy if-then rules generation. As a result, these systems can utilize linguistic information form of the human expert as well as measured data during modeling. Such applications have been developed for signal processing, automatic control, process control, data-base management, etc.

Generally optimization is the act of obtaining the best solution under given circumstances (Rao, 2002a, b). It can be defined as the process finding the condition (parameter values) that gives the maximum and minimum value of a function (Prasad *et al.*, 2007). Genetic algorithm is a global population search and optimisation technique based on the principle of natural genetics and natural selection. It operates on the principle of the survival of the fittest where weak individuals die before reproducing while stronger ones survive and bear many off-springs and breed children which often inherit the qualities that are in most cases superior to their parents. It is naturally used for solving maximization problems (Prasad *et al.*, 2007). However, there is no discussion on the application of these techniques for natural fiber hybrid polymer composite. The major objective of this research is to study the potentiality of Neuro-Fuzzy Systems and Genetic Algorithm Method in short natural fiber hybrid polymer composites. Venkatesh *et al.* (2013) investigated the untreated bamboo/sisal specimens already prepared with different fiber lengths (5, 10 and 15 mm) and weight percentages (10, 15 and 20). The maximum mechanical properties (tensile, flexural and impact strength) are found as 15 mm fiber length and 20% weight. The untreated hybrid short bamboo/sisal specimen prepared by 15 mm fiber length and 20 weight percentage are 23.42 MPa of tensile strength, 56.77 MPa of flexural strength and 19.12 kJ/m² of impact strength. From Venkatesh *et al.* (2013), by increasing the fiber length and fiber content, the mechanical properties also increases up to certain limit. The hybrid composite specimens were prepared by keeping the weight ratio of bamboo and sisal 50:50.

MATERIALS AND METHODS

Materials and processing: The untreated roselle and sisal fibers with dry condition were taken as reinforcement fillers. The matrix material used was based on commercially available polyester resin, trade name satyan polymer supplied by GV Traders. Methyl ethyl ketone peroxide and cobalt were used as accelerator and catalyst, respectively. The roselle and sisal fibers contents were set at 10, 20 and 30 wt.%. The fiber length is 5, 10 and 15 cm, respectively. In present research, 9 fabrication processes were done based on the fabrication parameter combinations. The physical appearance of the fabricated composite specimen for this research is shown in Fig. 1. The tensile strength of the composites was measured with a computerized FIE universal testing machine in accordance with the ASTM D638 procedure (ASTM D638-03, 2003).

From Table 1, by increasing the fiber length and fiber content the mechanical properties also increases up to certain limit. Further, addition causes them to decrease due to poor interfacial bonding between fiber and matrix. The maximum tensile strength is found out as 58.91 MPa. These mechanical properties are for the fiber length of 15 cm and the weight percentages of 30 for all cases.

Development of Regression Model: In present research, 3³ factorial design is used to develop a Mathematical Model



Fig. 1: A view of fabricated composit

Table 1: Effects of fiber length and weight percentage on tensile strength-average results

Fiber length (cm)	Fiber content (%)	Tensile strength (MPa)			Average results
		Sample 1	Sample 2	Sample 3	
5	10	32.10	34.22	35.93	34.08
5	20	42.92	43.09	43.19	43.07
5	30	52.61	52.54	53.55	52.90
10	10	42.89	41.36	42.59	42.28
10	20	48.36	47.38	48.70	48.14
10	30	57.84	57.24	55.07	56.70
15	10	45.75	46.07	43.13	44.98
15	20	49.04	49.04	51.55	49.86
15	30	58.64	59.26	58.82	58.91

for the tensile strength. Three fabrication parameters such as fiber length, fiber content and matrix proportion are used as input variables each parameter is at three levels, arranged in a factorial experiment then this constitutes a 3³ factorial design. To develop the model for tensile strength, the software known as SPSS is used and the model will be in the form of:

$$T \text{ and } F = k \times L^x \times C^y \times M^z$$

where, k, x, y and z are constant parameters. The Regression Model for tensile strength and flexural strength was developed as: Tensile Strength (T) (MPa) = 10125.402193 × L^{0.218574013} × C^{-0.054115110} × M^{-1.306879431}. The squared residual values (R²) for the Regression Model for tensile strength are found to be 0.92821. This mathematical formulation of the tensile strength is used as objective function.

ANFIS architecture: Adaptive Neuro-Fuzzy Inference System (ANFIS) is Sugeno Fuzzy Models put in the framework of adaptive systems to facilitate learning and adaptation. Such a framework makes Fuzzy System more systematic and less relying on expert knowledge. For simplicity, it is assumed that the Fuzzy Inference System under consideration has two inputs x and y and one output. For first order Sugeno Fuzzy Model, a common rule set with two fuzzy ‘If-then rule’ is as follows:

- Rule 1: IF x is A₁ and y is B₁, then f₁ = p₁x+q₁y+r₁
- Rule 2: IF x is A₂ and y is B₂, then f₂ = p₂x+q₂y+r₂

where, p₁, q₁, r₁ and p₂, q₂, r₂ are the linear parameters and A₁, B₁, A₂ and B₂ are non-linear parameters. The corresponding equivalent ANFIS architecture is shown in Fig. 2. The entire system consists of five layers namely fuzzy layer, product layer, normalized layer, defuzzy layer, and total output layer.

It may be seen that the circle indicates a fixed node whereas a square indicates an adaptive node (the parameters are changed during adaptation or training). In fuzzy layer, x and y are the input nodes and A₁, B₁ and A₂, B₂ are the linguistic labels in the Fuzzy theory (such as low or high) for dividing the membership function. The membership relationship between the output and input functions of this layer can be expressed as follows:

$$O_{1,i} = \mu_{A_i}(x) \quad i = 1, 2$$

$$O_{1,i} = \mu_{B_{i-2}}(x) \quad i = 3, 4$$

Here, the membership for the A₁ can be any appropriate parameterised membership function such as generalized bell shaped function as follows. As the value

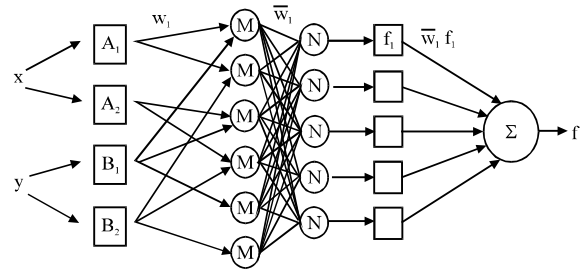


Fig. 2: ANFIS architecture

of these parameters change, the bell shaped function varies accordingly thus exhibiting various forms of membership function for fuzzy set:

$$\mu_{A_i}(x) = \frac{1}{1 + \left[\frac{(x - c_i)^2}{a_i^2} \right]^{b_i}}$$

Where:

- μ_{A_i}(x) and μ_{B_i}(x) = Appropriate parameterized membership functions
- {a_i, b_i, c_i} = Premise parameters
- Q_{1,i} = The output functions

In product layer, nodes are labeled as M. Each node output represents the firing strength of a rule. In general, fuzzy AND operators can be used as the node function in this layer. The output w₁ and w₂ are the weight function of the next layer. The output of this layer is the product of the all incoming signals. This is defined as follows:

$$O_{2,i} = w_i = \mu_{A_i}(x) \times \mu_{B_i}(x) \quad i = 1, 2$$

where, Q_{2,i} denotes the output of the layer 2. In normalized layer the nodes are labeled as N. Its function is to normalize the weight function in the following process:

$$O_{3,i} = \bar{w}_i = \frac{w_i}{w_1 + w_2} \quad i = 1, 2$$

where, O_{3,i} denotes the output of layer 3. In defuzzy layer the nodes are adaptive. The defuzzy relationship between the input and output of this layer can be defined follows:

$$O_{4,i} = \bar{w}_i f_i = \bar{w}_i (p_i x + q_i y + r_i)$$

where, {p_i, q_i, r_i} are consequent parameters and O_{4,i} denotes the output of layer 4. In total output layer, the output is the summation of the input signals of the layer 4. This can be written as follows:

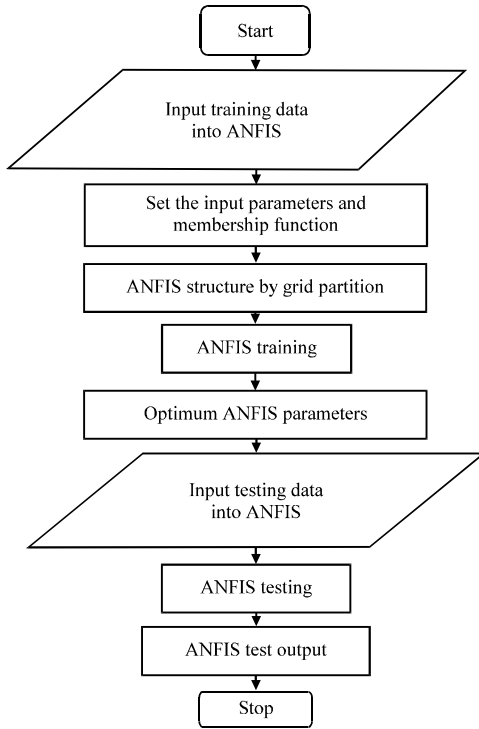


Fig. 3: Morphology of ANFIS Model

$$O_{s,1} = \text{Overall output} = \sum_1 \bar{w}_1 f_1$$

where, $O_{s,1}$ denotes the output of the system. In this experimental study, nine set of experimental readings were taken for training the Neuro-Fuzzy Model. The input-output relationship is modeled using the ANFIS in which knowledge base of the fuzzy system is designed automatically using Neural network so that the output, i.e., mechanical properties can be predicted for any set of input parameters. The morphology for the mechanical properties prediction model is shown in Fig. 3.

Genetic algorithm operators: Reproduction is a process in which the pairs of individuals or strings are chosen from the population to form a mating pool in such a way that those with high fitness value will be chosen more frequently. It is also names as selection operator. Crossover operator is applied to the mating pool with a hope that it would create a better string. There are five types of the crossover operators available in genetic algorithm, i.e., single point crossover, two-point crossover, multi-point crossover, uniform crossover and two-dimensional crossover. The single point crossover operator is carried out by randomly choosing a crossing site along the string after that all bits on the right side of the crossing site are exchanged (Prasad *et al.*, 2007). For example:

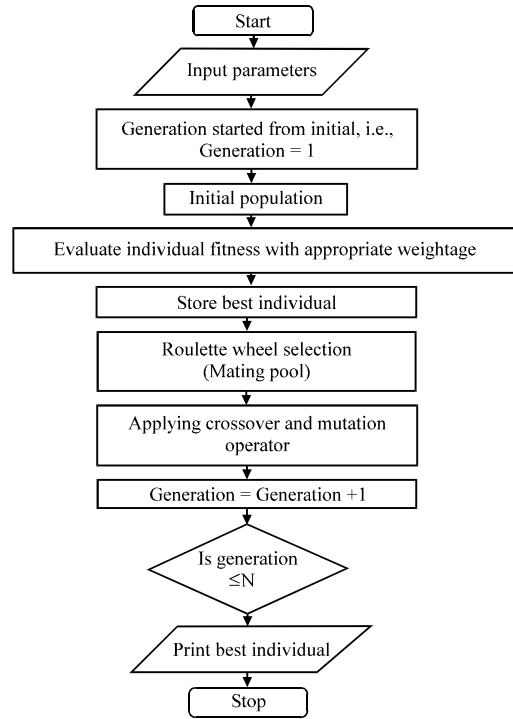
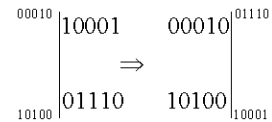


Fig. 4: Flow chart of Genetic algorithm



After crossover process the strings are subjected to mutation. It changes 0-1 and vice versa with a small mutation probability which is also needed to maintain diversity in the population. It is explained with following example in which all four strings have ‘1’ in the leftmost bit position. The required optimum solution is ‘0’ in all four strings. But all strings have ‘1’ in that position. Only mutation operator can create probability from ‘1’ to ‘0’ (Rao, 2002a, b):

```

    1001000110
    1110010101
    1010101010
    1000100001
  
```

Fitness function is a measure of how well a parameter set performs and plays very important roll in Genetic algorithm. Generally, the fitness function $f(x)$ is derived from the objective function. For maximization problems the fitness function can be considered to be same as that of objective function (Prasad *et al.*, 2007), i.e., $F(x) = f(x)$.

Genetic algorithms are ideally suited for unconstrained optimization problems. The present problem is also an unconstrained one. Flow-chart of Genetic algorithm is given in Fig. 4.

The parameters or variables have to be used for Neuro-Fuzzy and Genetic algorithm is fiber length, fiber content and matrix proportion in order to model and optimize the tensile strength of the composite specimen:

- Fiber length: $5 \leq L \leq 15$
- Fiber content: $10 \leq C \leq 30$
- Fiber proportion: $70 \leq P \leq 90$

RESULTS AND DISCUSSION

Results of Neuro-Fuzzy System and Regression Method:

The average absolute error between the predicted and observed value are taken as the performance measures. The prediction was based on the input data sets discussed in study. Using nine training data sets and six testing data sets and hybrid method consisting of back propagation for the parameters associated with the input membership function and the least square estimation for the parameters associated with the output membership functions, prediction was made for tensile strength of the short roselle and sisal fiber hybrid polyester composite. Predicted and observed values of tensile strengths along with the average absolute percentage error from Neuro-Fuzzy Model and Regression Model are given in Table 2 and 3. The average absolute error for Regression Model and Neuro-Fuzzy Model are 3.42 and 0.10%, respectively. Training performance of Neuro-Fuzzy Model is shown in Fig. 5.

Table 2: Observed and predicted values of tensile strength from Regression Model (RM)

FL (cm)	FC (wt.%)	MP (wt.%)	OTS (MPa)	PTS (MPa)	Error (%)
5	11	89.00	33.3	35.8	-7.51
7	20	80.00	42.5	42.9	-0.94
12	9	91.00	41.6	42.6	-2.40
9	30	69.00	51.9	53.8	-3.66
11	22	78.00	46.7	48.7	-4.28
15	29	71.00	57.1	58.1	-1.75

Average absolute error = 3.42. FL: Fiber Length; FC: Fiber Content; MP: Matrix Proportion; OTS: Observed Tensile Strength; PTS: Predicted Tensile Strength

Table 3: Observed and predicted values of tensile strength from Neuro-Fuzzy Model

FL (cm)	FC (wt.%)	MP (wt.%)	OTS (MPa)	PTS (MPa)	Error (%)
5	11	89	33.3	32.9	1.20
7	20	80	42.5	43.1	-1.41
12	9	91	41.6	41.1	1.20
9	30	69	51.9	52.4	-0.96
11	22	78	46.7	45.9	1.71
15	29	71	57.1	57.8	-1.22

Average absolute error = 0.1. FL: Fiber Length; FC: Fiber Content; MP: Matrix Proportion; OTS: Observed Tensile Strength; PTS: Predicted Tensile Strength

From average absolute error, it can be said that results obtained from Neuro-Fuzzy Model were highly encouraging and precise. Surface graphs between the inputs and the predicted output are shown in Fig. 6a-c.

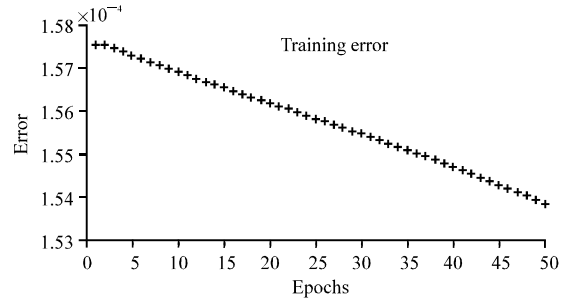


Fig. 5: Performance graph of the Neuro-Fuzzy Model

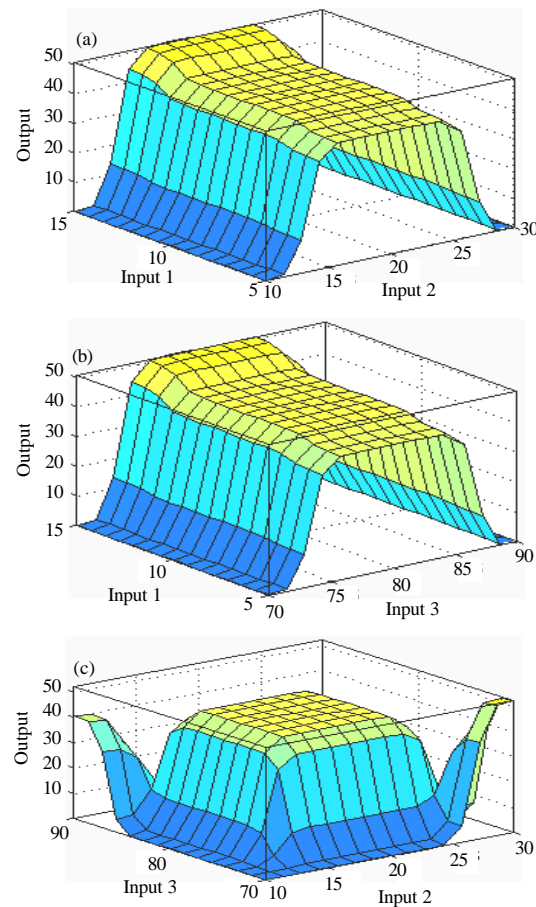


Fig. 6: Surface graph showing relationship of; a) input 1 and 2 with predicted output; b) input 1 and 3 with predicted output and c) input 3 and input 2 with predicted output, input 1 is fiber length, input 2 is fiber content, input 3 is matrix proportion and output is predicted tensile strength by Neuro-Fuzzy Model

ANFIS structure for Neuro-fuzzy with three input parameters and four rules is shown in Fig. 7. The membership function of each input was tuned using the Hybrid Method consisting of back propagation for the parameters associated with the input membership function and the least square estimation for the parameters associated with the output membership functions (Fig. 8a-c). The results obtained with ANFIS Model were compared with the experimental results in the ANFIS test output as shown in Fig. 9.

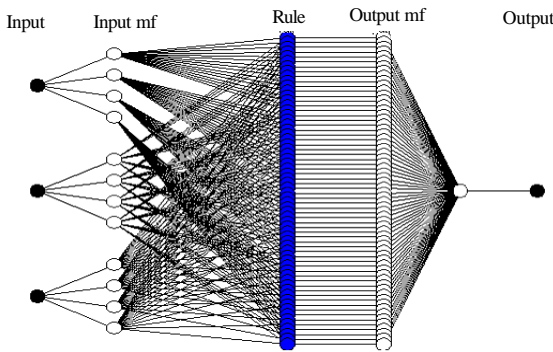


Fig. 7: ANFIS structure for Neuro-fuzzy with three input parameters and four rules

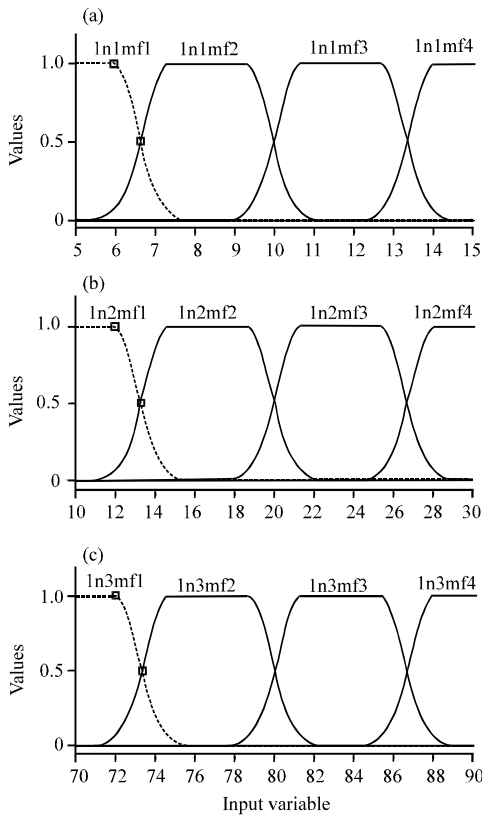


Fig. 8: Membership function plots for; a) input 1; b) input 2 and c) input 3

Results of Genetic algorithm: The Linear Ranking Methods proposed by Baker were used for reproduction. In cross-over, the two strings are picked from the mating pool and portion of the strings are exchanged between these strings with cross-over probability of 0.8. A single point cross over is employed. A bit-wise mutation is used with a probability of 0.001 for every bit. The maximum tensile strength is obtained at 22th generation. The effects of genetic algorithm on tensile strength are shown as Table 4. The maximum value of tensile strength with optimized fabrication parameters are presented as Table 5. The required program for this study is implemented on a PC by using C Language. The following parameters were used in Genetic algorithm:

Table 4: The effects of Genetic algorithm on tensile strength

No. of generation	Max. objective TS (MPa)	Parameters (L, C, M)
0	54.18	11.81, 23.74, 72.54
1	56.02	13.91, 27.81, 72.19
2	51.86	13.91, 22.79, 77.21
3	56.23	13.91, 28.04, 71.96
4	56.23	13.91, 28.04, 71.96
5	56.27	13.91, 28.08, 71.92
6	56.02	13.91, 27.81, 72.19
7	53.64	11.40, 27.81, 72.19
8	57.40	14.84, 28.44, 71.56
9	54.82	10.93, 29.69, 70.31
10	58.61	14.84, 29.69, 70.31
11	58.61	14.84, 29.69, 70.31
12	58.91	14.84, 30.00, 70.00
13	58.91	14.84, 30.00, 70.00
14	58.91	14.84, 30.00, 70.00
15	58.64	14.53, 30.00, 70.00
16	58.74	15.00, 29.69, 70.31
17	58.91	14.84, 30.00, 70.00
18	58.91	14.84, 30.00, 70.00
19	58.61	14.84, 29.69, 70.31
20	58.78	14.69, 30.00, 70.00
21	59.05	15.00, 30.00, 70.00
22	59.05	15.00, 30.00, 70.00
23	59.05	15.00, 30.00, 70.00
24	59.05	15.00, 30.00, 70.00
25	59.05	15.00, 30.00, 70.00
26	59.05	15.00, 30.00, 70.00
27	59.05	15.00, 30.00, 70.00
28	59.05	15.00, 30.00, 70.00
29	59.05	15.00, 30.00, 70.00
30	59.05	15.00, 30.00, 70.00
31	59.05	15.00, 30.00, 70.00
32	59.05	15.00, 30.00, 70.00
33	58.78	14.69, 30.00, 70.00
34	58.78	14.69, 30.00, 70.00
35	59.05	15.00, 30.00, 70.00

L: Fiber length in cm; C: Fiber content in wt.%; M: Matrix proportion in wt.%

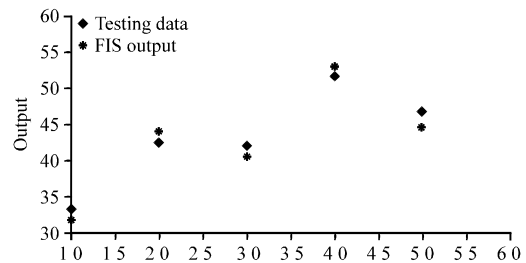


Fig. 9: ANFIS Test output for tensile strength

Table 5: Maximum value of the objective function (tensile strength) and optimized fabrication parameters values

Parameters	Values
Maximized value of objective function (Tensile strength) (MPa)	59.05
Optimized fabrication parameters	
Fiber length (L) (cm)	15.00
Fiber content (C) (wt.%)	30.00
Matrix proportion (M) (wt.%)	70.00

- No. of generation: 35
- Number of population: 18
- String length: 10
- Single point crossover: 0.8
- Mutation probability: 0.001

CONCLUSION

In the present study, a new attempt has been made to model and maximize the mechanical properties like tensile strength in short roselle and sisal fiber hybrid polyester composite by using Neuro-Fuzzy and Genetic algorithm. A Regression Model has been developed for the tensile strength with fabrication parameters. The lower average absolute error obtained by the Neuro-Fuzzy Model suggests its good potentiality for prediction of mechanical properties of short roselle and sisal fiber hybrid polyester composites. Eventhough Neuro-Fuzzy Model were highly encouraging and precise than Regression Model as an initial attempt, Regression Model was used with Genetic algorithm. The predicted tensile strength using Genetic algorithm is higher than the observed value within range of used fabrication parameters. So, it shows its good potential to maximize the mechanical properties of short roselle and sisal fiber hybrid polyester composites. The Neuro-Fuzzy and Genetic Algorithm Method presented in this study shows a good potentiality to model and maximize the mechanical properties of natural fiber hybrid polymer composites.

REFERENCES

ASTM D638-03, 2003. Standard test method for testing tensile properties of plastics. American Society for Testing and Materials, USA.

Alsina, O.L.S., L.H. de Carvalho, F.G.R. Filho and J.R.M. d'Almeida, 2005. Thermal properties of hybrid lignocellulosic fabric-reinforced polyester matrix composites. *Polym. Test*, 24: 81-85.

De Medeiros, E.S., J.A.M. Agnelli, K. Joseph, L.H. de Carvalho and L.H.C. Mattoso, 2005. Mechanical properties of phenolic composites reinforced with jute/cotton hybrid fabrics. *Polym. Compos.*, 26: 1-11.

Idicula, M., S.K. Malhotra, K. Joseph and S. Thomas, 2005. Dynamic mechanical analysis of randomly oriented intimately mixed short banana/sisal hybrid fibre reinforced polyester composites. *Composit. Sci. Tech.*, 65: 1077-1087.

Jacob, M., S. Thomas and K.T. Varughese, 2004. Mechanical properties of sisal/oil palm hybrid fiber reinforced natural rubber composites. *Composit. Sci. Tech.*, 64: 955-965.

Li, Y., C. Hu and Y. Yu, 2008. Interfacial studies of sisal fiber reinforced high density polyethylene (HDPE) composites. *Composites Part A: Applied Sci. Manufact.*, 39: 570-578.

Majumdar, A., P.K. Majumdar and B. Sarkar, 2005a. Application of an adaptive neuro-fuzzy system for the prediction of cotton yarn strength from HVI fibre properties. *J. Tex. Inst.*, 96: 55-60.

Majumdar, A., P.K. Majumdar and B. Sarkar, 2005b. Application of linear regression, artificial neural network and neuro-fuzzy algorithms to predict the breaking elongation of rotor-spun yarns. *Ind. J. Fibre Textile Res.*, 30: 19-25.

Noorunnisa, K.P., M.M. Reddy, K. Raghu, K. John, S.V. Naidu, 2007. Tensile flexural and compressive properties of sisal/silk hybrid composites. *J. Reinf. Plast. Composit.*, 26: 1065-1070.

Paiva Jr., C.Z., L.H. de Carvalho, V.M. Fonseca, S.N. Monteiro and J.R.M. d'Almeida, 2004. Analysis of the tensile strength of polyester/hybrid ramie-cotton fabric composites. *Polym. Test*, 23: 131-135.

Pongsathom, K., N. Wim and T. Wandee, 2011. The effect of fiber length on tensile properties of epoxy resin composites reinforced by the fibers of bamboo. *J. Microscopy Soc. Thailand*, 4: 46-48.

Prasad, C.F., S. Jayabal and U. Natarajan, 2007. Optimization of tool wear in turning using genetic algorithm. *Indian J. Eng. Mater. Sci.*, 14: 403-407.

Rao, S.S., 2002a. *Engineering Optimization*. New Age International Pvt. Ltd., India.

Rao, S.S., 2002b. *Optimization Theory and Application*. New Age International Pvt. Ltd., India.

Sette, S., L. Boullart, L. Van Langenhove and P. Kiekens, 1997. Optimizing the fiber-to-yarn production process with a combined neural network/genetic algorithm approach. *Textile Res. J.*, 67: 84-92.

Tajvidi, M., 2005. Static and dynamic mechanical properties of a kenaf fiber-wood flour/polypropylene hybrid composite. *Inc. J. Appl. Polym. Sci.*, 98: 665-672.

Venkatesh, R.P., K. Ramanathan, M. Prasanna and P. Vikraman, 2013. Mechanical and water absorption behaviour of natural fiber reinforced hybrid composites. *Proceedings of the ICRACM*, February 18-21, 2013, Varanasi.