

## The Analysis of ERIC-PCR Genomic Polymorphism of Salmonella Isolated Strains in Pig Carcass

Li Yu, Fang Yan-Hong, Zhu Heng-Wen, Sun Pei,  
Wei Jian-Zhong and Yin Zhong-Jun

College of Animal Sciences and Technology, Anhui Agricultural University, 230036 Hefei, China

**Abstract:** To investigate molecular epidemiological characteristic of Salmonella isolated strains in pig carcass, the current study, 71 strains of Salmonella genome DNA were isolated from the muscle and surface of pig carcass samples in five designated slaughterhouses in Hefei, Anhui province, China. They were gathered and analyzed using the technique of Enterobacterial Repetitive Intergenic Consensus-Polymerase Chain Reaction (ERIC-PCR). The multiple DNA fragments of all strains generated with ERIC2 primers were composed of 6-14 bands ranging in sizes between 250 bp and 3 kb. One characteristic band (approximately 250 bp) was conserved among nearly all isolates. This study showed that genotype polymorphism exists in Salmonella isolated strains, serotype and the source of the isolated strains with the same genotype had certain relevance. It further proves that the carcass surface contamination during slaughter is mainly from cross-contamination and environmental pollution during product processing and carcass meat-like isolates were from the endogenous contamination.

**Key words:** Salmonella, pig carcass, ERIC-PCR, genotyping, spollution, China

---

### INTRODUCTION

Salmonella is an important cause of food-borne infections with a broad host spectrum. Pigs are one of the main reservoir hosts. To date, >2,500 Salmonella serovars have been identified. Traditional serological methods have some limitations such that some strains cannot be identified serologically (Rasschaert *et al.*, 2005). The deficiencies of the serological typing are due to several reasons: Salmonella antigens can have mutations that include the HO, SR variation and H antigen phase variation.

Also, common antigens may exist among different strains of bacteria that result in cross-reaction. Therefore to investigate the origins and the relationships among different isolates, more precise methods than serotyping are needed. Enterobacterial Repetitive Intergenic Consensus (ERIC) is found in enterobacterial genomes non-coding conserved repetitive sequences with 126 bp long.

It has species specificity in the location and number of copies of chromosome (Hulton *et al.*, 1991; Versalovic *et al.*, 1991). As one of main enterobacterial pathogenic bacteria, ERIC sequence exists in Salmonella genome.

The current study, 71 strains of Salmonella genome DNA were isolated from the muscle and surface of pig

carcass samples in five designated slaughterhouses in Hefei, Anhui province, China. They were gathered and analyzed by using the technique of Enterobacterial Repetitive Intergenic Consensus-Polymerase Chain Reaction (ERIC-PCR). It was used to establish the DNA fingerprints among Salmonella isolated strains, perform genotyping of the Salmonella isolated strains and analyze the genetic similarity in order to provide molecular epidemiological evidence of the prevention and control of food-borne Salmonella.

### MATERIALS AND METHODS

**Bacterial strains:** About 71 Salmonella strains were isolated from the muscle and surface of pig carcass samples in five designated slaughterhouses in Hefei, Anhui, China (coded as CR, SLH, HS, ZT, WW). The experiment was conducted in Animal Infectious Disease Laboratory of Anhui Agricultural University. Table 1 shows the information of isolated strains (Yu *et al.*, 2007).

**Main reagents:** TSB broth is provided by Hangzhou Microbial Reagent Co., Ltd. Bacterial genomic DNA extraction kit was purchased from Tiangen Biotech (Beijing) Co., Ltd. PCR-related reagents (10×Ex Taq buffer (with Mg<sup>2+</sup>), 2.5 mM dNTP, 5 U uL<sup>-1</sup> Ex Taq DNA polymerase, 6× loading buffer) were purchased from

Table 1: List of the ERIC-PCR genotypes and related information for the 71 Salmonella strains

Strain No.	Genotypes	Serotypes	Isolate source	Site of origin	Strain No.	Genotypes	Serotypes	Isolate source	Site of origin
1	I	<i>S. reading</i>	Surface	CR	37	XV	<i>S. derby</i>	Surface	WW
2	I	<i>S. reading</i>	Surface	CR	38	XV	<i>S. derby</i>	Surface	WW
3	I	<i>S. reading</i>	Surface	CR	39	XV	<i>S. derby</i>	Surface	HS
4	I	<i>S. reading</i>	Surface	CR	40	XV	<i>S. derby</i>	Muscle	HS
5	I	<i>S. reading</i>	Surface	CR	41	XV	<i>S. senftenberg</i>	Surface	WW
6	I	<i>S. reading</i>	Surface	CR	42	XV	<i>S. senftenberg</i>	Surface	WW
7	I	<i>S. reading</i>	Surface	CR	43	XV	<i>S. senftenberg</i>	Surface	WW
8	I	<i>S. reading</i>	Surface	CR	44	X	<i>S. senftenberg</i>	Surface	WW
9	II	<i>S. reading</i>	Surface	CR	45	XVII	<i>S. senftenberg</i>	Surface	SLH
10	IV	<i>S. reading</i>	Muscle	CR	46	XIV	<i>S. senftenberg</i>	Surface	SLH
11	I	<i>S. reading</i>	Muscle	CR	47	VII	<i>S. senftenberg</i>	Surface	SLH
12	II	<i>S. reading</i>	Muscle	CR	48	XVIII	<i>S. senftenberg</i>	Surface	CR
13	III	<i>S. reading</i>	Muscle	CR	49	I	<i>S. sainpaul</i>	Muscle	HS
14	IV	<i>S. reading</i>	Muscle	CR	50	I	<i>S. sainpaul</i>	Muscle	HS
15	IV	<i>S. reading</i>	Muscle	WW	51	V	<i>S. sinstorf</i>	Muscle	CR
16	VI	<i>S. reading</i>	Surface	WW	52	V	<i>S. sinstorf</i>	Surface	ZT
17	VII	<i>S. reading</i>	Surface	WW	53	V	<i>S. sinstorf</i>	Muscle	HS
18	V	<i>S. reading</i>	Surface	ZT	54	V	<i>S. ughelli</i>	Muscle	CR
19	V	<i>S. muenster</i>	Surface	ZT	55	V	<i>S. ughelli</i>	Surface	SLH
20	V	<i>S. muenster</i>	Surface	ZT	56	V	<i>S. ughelli</i>	Surface	ZT
21	V	<i>S. muenster</i>	Surface	ZT	57	IV	<i>S. nchanga</i>	Surface	CR
22	V	<i>S. muenster</i>	Surface	ZT	58	IV	<i>S. nchanga</i>	Surface	CR
23	V	<i>S. muenster</i>	Surface	ZT	59	VI	<i>S. nchanga</i>	Surface	ZT
24	V	<i>S. muenster</i>	Surface	HS	60	XVI	<i>S. nchanga</i>	Surface	HS
25	V	<i>S. muenster</i>	Muscle	HS	61	XVI	<i>S. nchanga</i>	Muscle	HS
26	XI	<i>S. muenster</i>	Muscle	HS	62	V	<i>S. vejle</i>	Surface	ZT
27	V	<i>S. muenster</i>	Muscle	SLH	63	VI	<i>S. vejle</i>	Surface	ZT
28	V	<i>S. muenster</i>	Muscle	SLH	64	XII	<i>S. vejle</i>	Surface	ZT
29	V	<i>S. muenster</i>	Surface	WW	65	VI	<i>S. vejle</i>	Muscle	HS
30	V	<i>S. muenster</i>	Muscle	WW	66	IX	<i>S. vejle</i>	Muscle	SLH
31	V	<i>S. muenster</i>	Muscle	CR	67	IX	<i>S. vejle</i>	Muscle	SLH
32	VIII	<i>S. derby</i>	Surface	SLH	68	IX	<i>S. vejle</i>	Muscle	SLH
33	XV	<i>S. derby</i>	Surface	SLH	69	IX	<i>S. vejle</i>	Muscle	SLH
34	VIII	<i>S. derby</i>	Muscle	SLH	70	V	<i>S. amounderness</i>	Muscle	HS
35	VIII	<i>S. derby</i>	Muscle	SLH	71	XIII	<i>S. amounderness</i>	Surface	ZT
36	XV	<i>S. derby</i>	Surface	WW	-	-	-	-	-

Takara Co., Ltd.; DNA Marker 100-3000 bp ladder-K, primers ERIC2 (5'-AAGTAAGTGACTGGGGTGAGCG-3') (Zhang *et al.*, 2007) was synthesized by Sangon Biotech (Shanghai) Co., Ltd.

**Main equipments:** Clean benchtop, incubators, high-speed refrigerated centrifuge, gradient PCR, the level of electrophoresis and TS-680D Pui Ching automatic gel image analysis instrument.

**Bacterial growth:** Bacteria fosters were seized 20 uL to get inoculated in 2 mL TSB broth at 37°C oscillation shaking incubator after 6-8 h, stored at 4°C for use.

**Extraction of bacterial chromosomal DNA:** Following the instructions of bacterial chromosomal DNA extraction kit and then place the extracted genomic DNA in -20°C refrigerator for use.

**ERIC-PCR:** ERIC-PCR was performed with single primer ERIC2. Each of the 50 mL PCR volume was composed of 3 uL template DNA; 5 uL 10×Ex Taq buffer (with Mg<sup>2+</sup>); 4 uL 2.5 mM dNTP; 4 uL 10 pM primer ERIC

2; 0.25 uL 5 U uL<sup>-1</sup> Ex Taq DNA polymerase and with double distilled water to adjust the final volume to 50 uL. Amplification was performed in a PCR express machine by using the following program: preliminary denaturation for 5 min at 94°C, 35 cycles of 94°C for 1 min, 52°C for 1 min and 72°C for 3 min followed by a final 10 min at 72°C. PCR amplification products were obtained with 6× loading buffer after mixing, the 1.5% agarose gel electrophoresis (1×TAE as the electrophoresis buffer, EB staining, 4 V cm<sup>-1</sup> electrophoresis under the conditions of 1.5-2 h), the DNA marker 100-3000 bp ladder-K as the molecular weight standards then electrophoresis results were detected under UV gel imaging system. All strains were repeated twice to record ERIC-PCR patterns.

**Composite analysis of fingerprint and data analysis:** A comparative analysis of electrophoresis patterns was conducted according to the analysis of fragments of the number and relative position. Clustering analysis is based on the choice of bands. ERIC-PCR products were recorded in (0, 1), i.e., the same moving position (the same molecular weight fragments) is marked as 1 if amplified and 0 if not. Using software, Cross-check to process to

obtain a matrix of binary series. Data were input into the software NTSYS-pc 2.10 by using Unweighted pair group method, using averages algorithm (UPMGA) cluster analysis to plot the genetic mapping diagram. Each isolate is considered as a Taxonomic Unit (OTU) and strains with similarity  $\geq 90\%$  are considered as isolates with the same origin (Borges *et al.*, 2003).

## RESULTS AND DISCUSSION

The ERIC-PCR analyses of 71 strains of Salmonella belonging to ten different serotypes on the gels were conducted. They were all amplified with clear DNA fingerprint bands and were easy to distinguish visually (Fig. 1). The repeated experiment results confirm the repeatability of its fingerprints. The multiple DNA fragments of all strains generated with ERIC2 primers were composed of 6-14 bands ranging in sizes between 250 bp and 3 kb. One characteristic band (approximately 250 bp) was conserved among nearly all isolates (Except for 48th strain). The genetic similarity of all strains was seized 60-100% belonging to eighteen different genotypes (Table 1, I-XVIII). Where, V is the dominant genotype, accounting for 29.58% including 21 strains belonging to six different serotypes of Salmonella, involving five slaughterhouse carcass surface and muscle samples followed by the I genotype, accounting for 15.56% including 211 strains of Salmonella serotypes, involving two slaughterhouse carcass surface and muscle samples; the 3rd, XV genotype, accounting for 12.68% including nine strains belonging to Salmonella serotypes 2, 3 abattoir carcass body surface involved and muscle samples; the other genotypes in the proportion of between 1.4-7%.

Recently, many studies on ERIC-PCR genotyping of Salmonella were conducted. It is possible to use the ERIC1R-ERIC2 primer set to discriminate Salmonella serotypes. All serotypes produced unique fingerprints and the isolates within one serotype had identical patterns (Van Lith and Aarts, 1994). Another study has also proved that ERIC-PCR can be used to distinguish different Salmonella serotypes (Lim *et al.*, 2005). However, according to Burr *et al.* (1998) who tested the same primer set on 89 Salmonella isolates of 22 serotypes, there was no correlation between genotype and serotype (Burr *et al.*, 1998). Rasschaert *et al.* (2005) applied the ERIC-PCR to the typing of eighty different serotypes and five undetermined serotype of Salmonella isolated strains. This method was also used to perform typing for 55 Salmonella strains that belonged to ten different serotypes. The conclusion showed that in certain epidemiological studies, ERIC-PCR can be used to limit the number of strains that have to be serotyped (Rasschaert *et al.*, 2005).

In this study, the number, size and characteristic bands of the DNA fingerprints of Salmonella isolated strains obtained from the 71 pig carcass samples were consistent with other researches (Swanenburg *et al.*, 1998; Kumar *et al.*, 2008). The results of the genetic similarity showed that the typing results of genotype and serotype of *S. saintpaul*, *S. sinstorf* and *S. ughelli* were consistent. There were two different genotypes included in *S. derby*, *S. muenster* and *S. amounderness*, respectively while *S. reading*, *S. vejle*, *S. senftenberg*, *S. nchanga* included seven, four, six and three genotypes, respectively. It was indicated that there was no correlation between genotype and serotype. Moreover in this study, the homology of a portion of Salmonella isolated strains with different serotypes was  $>90\%$ . For instance, all the *S. sinstorf* and *S. ughelli* isolated strains and most of the *S. muenster* isolated strains belonged to V genotype. Conversely, the homology of Salmonella isolated strains with identical serotype was  $<90\%$ . For example, eighteen isolated strains of *S. reading* and eight isolated strains of *S. senftenberg* belonged to seven different genotypes and six different genotypes, respectively. This shows that different serotypes of Salmonella isolated strains can have identical origin while genotype polymorphism is shown between Salmonella isolated strains with the same genotype.

By analyzing the source of strains, some Salmonella isolated strains with identical serotype isolated from the same slaughterhouse belonged to the same genotype or the homology was higher than other strains. For example, five isolated strains of *S. nchanga* were divided into three different genotypes according to their locations and four strains of *S. vejle* isolated from SLH slaughterhouse belonged to genotype IX. This demonstrated that serotype and the source of the isolated strains with the same genotype had certain relevance. As the strain samples in this study were isolated from pig carcass in different slaughterhouses, even pig carcass in the same slaughterhouse can be from different sources. Therefore, several genotypes of Salmonella isolated strains from the same slaughterhouse with identical serotype could have diversities. For instance, fourteen strains of *S. reading* isolated from CR slaughterhouse belonged to genotype I-IV (1-10th represents the isolated strains of pig carcass surface samples, 11-14th represents the isolated strains of pig carcass meat samples).

From the perspective of serotypes, it was demonstrated that the carcass surface contamination during slaughter is mainly from cross-contamination and environmental pollution during product processing and carcass meat-like isolates were from the endogenous contamination (Li *et al.*, 2008). However, based on the results above, there is no necessary correlation between serotypes and genotypes so the conclusions need to be

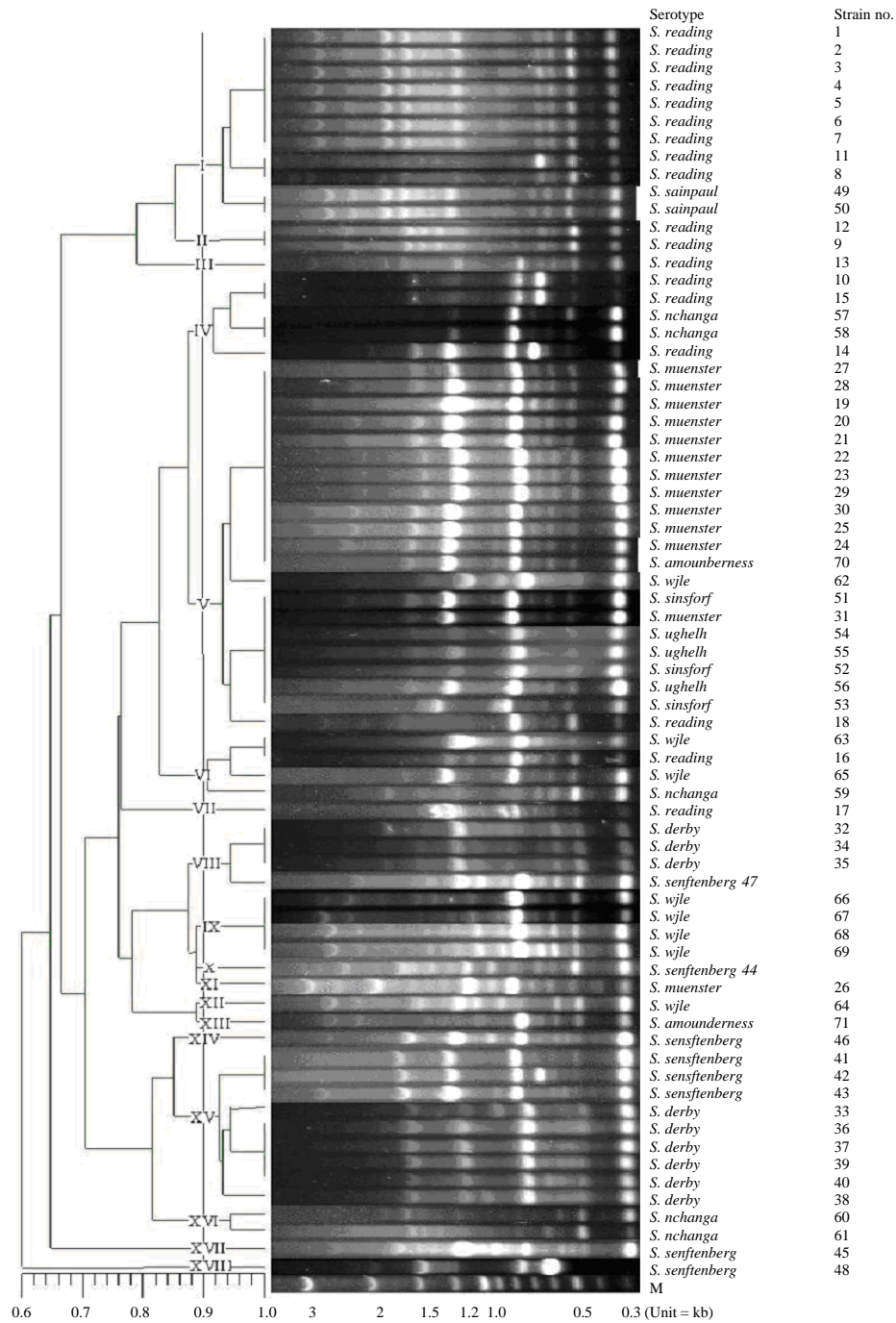


Fig. 1: ERIC-PCR dendrogram exhibiting the genetic relatedness of Salmonella (n = 71) isolated from pig carcass. The percentage of similarities among strains was determined using Dice coefficient and the clustering was performed by UPGMA

further explored. The results show that from the same abattoir, the same serotype of Salmonella isolates from carcass surface are of the same genotype or even exactly the same fingerprint. For example, what were isolated from the surface of the carcass CR strains were 1st-8th,

*S. reading* and I genotype and carcass meat samples were Salmonella isolates genotype polymorphism. For example what were isolated from CR 10-13th carcass meat like strains were *S. reading* but the genotypes belonging to IV, I, II, III. Moreover, some were isolated from the same

abattoir, the carcass of the same serotype of surface and carcass *Salmonella* isolates from meat samples or fingerprints are exactly the same genotype. For example, what were isolated from the surface of the 1st-8th CR carcass and the carcass meat strains kind of 11 strains were *S. reading* and I genotype; isolated from the HS 24 strains of the surface of the carcass and carcass meat samples and 25 strains were *S. muenster* V genotype and so on. Then from the angle of genes, it can be shown that pigs during the course of slaughter and processing can have cross-contamination among different strains on the carcass surface. The pollution is from the carcass meat samples infected before slaughtered. It also further confirms that the sources of genotype and the same serumtype are relevant.

The outbreak and prevalence of Salmonellosis epidemic have become a global public health problem, so the detection of food-borne *Salmonella* and the homology analysis are also significantly important. As a rapid and effective molecular typing technique, ERIC-PCR not only can be applied to the genotyping of *Salmonella* but also can be used in tracing pathogen in food.

### CONCLUSION

This study identifies the relevance between genotypes of the strain of *Salmonella* and the same serotype and clarifies the pollution source of *Salmonella* in slaughtered carcass and muscle surface so as to provide scientific basis for the monitoring of *Salmonella* contamination and the selection of critical control points during the process of pig slaughtering and the prevention and control of food-borne diseases.

### ACKNOWLEDGEMENTS

This research is financially supported by the Agricultural Science and Technology Achievements Transformation Foundation of China (Contract no: 2007GB2C100109), National Science and Technology Support Projects of China (Contract no: 2009BADB9B01), Higher School Science Research Project in Anhui province of China (Contract no: KJ2008B056).

### REFERENCES

Borges, L.G.D.A., V.D. Vechia and G. Corcao, 2003. Characterisation and genetic diversity via REP-PCR of *Escherichia coli* isolates from polluted waters in southern Brazil. *FEMS Microbiol. Ecol.*, 45: 173-180.

Burr, M.D., K.L. Josephson and I.L. Pepper, 1998. An evaluation of ERIC PCR and AP PCR fingerprinting for discriminating *Salmonella* serotypes. *Lett. Applied Microbiol.*, 27: 24-30.

Hulton, C.S.J., C.F. Higgins and P.M. Sharp, 1991. ERIC sequences: A novel family of repetitive elements in the genomes of *Escherichia coli*, *Salmonella typhimurium* and other enterobacteria. *Mol. Microbiol.*, 5: 825-834.

Kumar, R., P.K. Surendran and N. Thampuran, 2008. Molecular fingerprinting of *Salmonella enterica* subsp. *enterica* typhimurium and *Salmonella enterica* subsp. *enterica* derby isolated from tropical seafood in South India. *J. Mol. Biotechnol.*, 40: 95-100.

Li, Y., X.A. Jiao, J.Z. Wei, W. Wang, Q. Wang, C.F. Li and G.J. Wang, 2008. Analysis on the serotypes and drug-susceptibility of *Salmonella* isolates from pig carcass. *Chinese J. Zoonoses*, 24: 67-70.

Lim, H., K.H. Lee, C.H. Hong, G.J. Bahk and W.S. Choi, 2005. Comparison of four molecular typing methods for the differentiation of *Salmonella* spp. *Int. J. Food Microbiol.*, 105: 411-418.

Rasschaert, G., K. Houf, H. Imberechts, K. Grijspeerd, L. de Zutter and M. Heyndrickx, 2005. Comparison of five repetitive-sequence-based PCR typing methods for molecular discrimination of *Salmonella enterica* isolates. *J. Clin. Microbiol.*, 43: 3615-3623.

Swanenburg, M., H.A.P. Urlings, D.A. Keuzenkamp and J.M.A. Snijders, 1998. Validation of ERIC PCR as a tool in epidemiologic research of *Salmonella* in slaughter pigs. *J. Ind. Microbiol. Biotechnol.*, 21: 141-144.

Van Lith, L.A.J.T. and H.J.M. Aarts, 1994. Polymerase chain reaction identification of *Salmonella* serotypes. *Lett. Applied Microbiol.*, 19: 273-276.

Versalovic, J., T. Koeuth and J.R. Lupski, 1991. Distribution of repetitive DNA sequences in eubacteria and application to fingerprinting of bacterial genomes. *Nucleic Acids Res.*, 19: 6823-6831.

Yu, L., J. Xin-An, W. Jian-Zhong, W. Gui-Jun, L. Chun-Fen, Z. Ji-Gui and H. Jin-Lin, 2007. Investigation of main microbial indices on pig carcass in Hefei. *Chinese J. Health Lab. Technol.*, 17: 1191-1192.

Zhang, H.M., S. Lei and L. Lin, 2007. Fingerprinting genomes of class 1 integron among *Salmonella* stains by enterobacterial repetitive intergenic consensus PCR. *J. Yunnan Agric. Univ.*, 22: 467-470.