

Effect of Orally-Administered 17 α -Methyltestosterone at Different Doses on the Sex Reversal of the Nile Tilapia (*Oreochromis niloticus*, Linnaeus 1758)

¹Ihsan Celik, ²Yusuf Guner and ¹Pinar Celik

¹Department of Aquaculture, Faculty of Fisheries,

Canakkale Onsekiz Mart University, Terzioğlu Campus, 17100 Canakkale, Turkey

²Department of Aquaculture, Faculty of Fisheries, Ege University, 35100 Bornova, Izmir, Turkey

Abstract: In order to obtain all male population, the Nile tilapia (*Oreochromis niloticus*) larvae which just finished the yolk sac were fed with feed containing 17 α -Methyltestosterone at five different doses (0, 20, 30, 40, 50 and 60 mgMT kg⁻¹ feed) for 28 days. As a result of the experiment repeated twice, it was found out that the sex reversal rates among the groups were at the levels of 57.1, 69.8, 69.4, 70.9, 86.1 and 93.7%, respectively. Furthermore, it was observed that the highest sex reversal rate occurred in the group to which 60 mgMT kg⁻¹ feed dose was applied.

Key words: Tilapia, *Oreochromis niloticus*, sex reversal, 17 α -methyltestosterone, doses, population

INTRODUCTION

With the purpose of achieving more productivity in growing tilapia (*Oreochromis niloticus*) at the unit time and obtaining more uniform individuals in terms of body size, it is important to produce monosex cultures that are totally composed of males (Mair and Little, 1991). Although, monosex male populations can be obtained by direct or indirect methods, the oral administration of 17 α -Methyltestosterone (MT) has been reported to be the most preferred method in commercial uses (Mair and Little, 1991; Vera Cruz and Mair, 1994; Green and Teichert-Coddington, 2000). The sex reversal application among tilapia by this method is quite effective in obtaining a population, almost all of which is composed of male individuals and $\leq 5\%$ of which is composed of phenotypic females in the early life stage (Green and Teichert-Coddington, 2000).

Although, feed containing MT at 60 mgMT kg⁻¹ feed dose is used generally for the newly-hatched individuals in the sex reversal studies with oral administration (Pompa and Green, 1990) and although, it is reported that the general dose used in Nile tilapia juveniles was at 30-60 mgMT kg⁻¹ feed interval until the 25-60th days of early feeding (Macintosh and Little, 1995) many studies have been carried out (Abucay, 1997; Rosenstein and Hulata, 1994; Vera Cruz *et al.*, 1996) and are still being carried out for optimizing the oral method of sex reversal considering the parameters such as hormone dose, the commencement time for application, application duration

and stock density. This study also observes the effect of different doses of MT (0, 20, 30, 40, 50 and 60 mgMT kg⁻¹ feed) under controlled conditions on the sex reversal of tilapia. It is reported that sex reversal is applied to 2-6 million fish annually in the greatest tilapia farms in America, one of the countries where the commercial tilapia enterprises perform intensive production and that 167-500 juveniles are subjected to the method of sex reversal each month with a view to meeting the annual production quantity (Varadaraj *et al.*, 1994). When it is assumed that negative environmental effects may occur in the event of performing such an intensive hormone application under natural conditions (Green and Teichert-Coddington, 2000), it is essential to perform such applications in closed circuit systems or under controlled aquarium conditions. The effect of MT on the sex reversal of Nile tilapia under fully controlled aquarium conditions was observed in this study.

MATERIALS AND METHODS

Experimental design: The juveniles used in the experiments were obtained from mature individuals which were stocked in two production aquariums each of which had a water capacity of 420 L with a dimension of 140 \times 60 \times 50 cm (length x width x height) (6 females/2 males) and the weights of which ranged between 150 and 350 g. The eggs were allowed to be incubated in the mount of the female. Two experiments were carried out so as to observe the effect of different doses on sex reversal. In

the 1st experiment, 360 of the larvae obtained after one gestation from a single female were stocked as 60 larvae (4 larvae L⁻¹) in each of the 6 aquariums with a water capacity of 15 L. In the 2nd experiment, the larvae from another female were stocked with the same strategy. The females which held the fertilized eggs during reproduction in their mouth were allowed to incubate the eggs in their mouth and the yolk-sac larvae were taken from the mouth of female as soon as the eggs hatched. When 2/3 of the yolk sac finished, granulated feed began to be given. The larvae which began exogenous feeding were kept in aquariums of 15 L on the first 40 days whereas they were kept in aquariums of 140 L from the 40th day until the 9th month. In order to distinguish whether, the gonads were male or female by histological observations, the fish were fed for 9 months and the experiment lasted for 9 months in total.

On the first 29 days of feeding, the fish were fed with hormone-injected feed and then they were fed with normal hormone-free feed. During the experiment, the water temperature was kept at a minimum of 20°C and a maximum of 28°C at an average level of 24±0.37°C and pH was kept at a minimum of 6.0 and a maximum of 8.2 at an average level of 7.6±0.42. Lighting was provided with 30-Watt fluorescent lamps in 12 h light and 12 h dark periods.

Preparing steroid-containing feed: The commercial carp feed containing 28% raw protein was used in feeding. The sizes of feed which was given in granulated form at the beginning of feeding were arranged according to fish sizes. In order to obtain feed containing MT at five different doses of 20-60 mgMT kg⁻¹ feed, 3, 4.5, 6, 7.5 and 9 mg of MT were added, respectively to 5 granulated feed groups of 150 g each by the method of spraying. About 50 mL from 95% ethanol was used for each group in order to dissolve methyltestosterone. Only 50 mL of 95% ethanol was sprayed over the feed of the control group that did not contain MT. After steroid was mixed into the feed, the feed was left to be dried at room temperature for 12 h. After the feed was dried, it was stocked in plastic storage bags and preserved at room temperature.

Feeding protocol: The daily feeding rate was 10% of the mean body weight on the first 40 days of the experiment while it was 3-5% of the body weight on the 40-90th days. Feeding was provided in two meals and in equal amounts daily in all groups.

Specifying the sex reversal rates: To find out how sexual development was at the end of the experiment (9 months later), the gonads of the fish were removed. The gonads

were fixed for 1 day in 10% formaline solution (40% formaline 100 mL+pure water 900 mL). Fixation was followed by dehydration, saturation and parafinization. Tissue sections were obtained in 4-micron sizes and the Hematoxylen-Eosin staining method was applied in tissue staining. Findings of sex formation in the gonads were recorded in the preparations prepared after staining. By looking at the histological gonad samples, the male/female rates in the population were found (Fig. 1 and 2).

The SPSS package program and the χ^2 -test were used in finding out the statistical significance in terms of inter-group survival rates and sex reversal rates p(0.05).

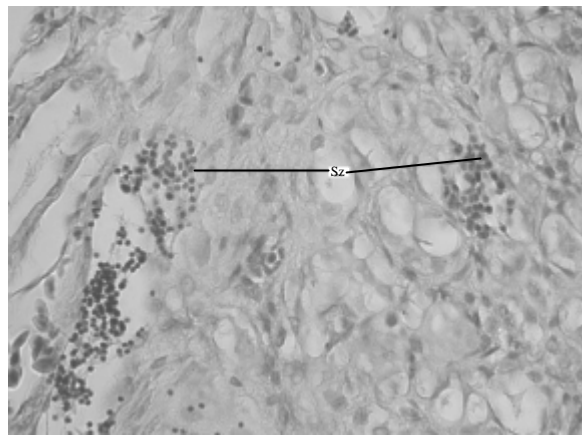


Fig. 1: The spermatozoa observed in male individuals on the gonad sections obtained at the end of the experiment and used in specifying sex, Sz: spermatozoa. H and E (Olympus BX51, 400X, Japan)

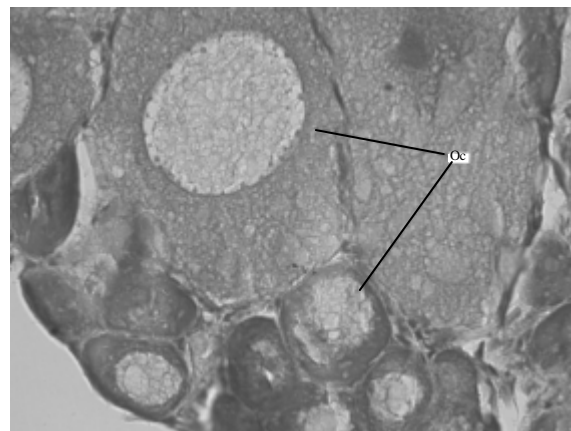


Fig. 2: The egg formations observed on the gonads of female fish, Oc: Oocyte, H and E (Olympus BX51, 400X, Japan)

RESULTS AND DISCUSSION

According to the data collected in order to find out the sexes by removing the gonads of all fish so as to find out the rate of males and females in the groups at the end of the study, the survival rates were 81.6, 88.3, 60, 91.6, 56.6 and 80%, respectively in the groups to which 0 (control), 20-60 mgMT kg⁻¹ feed was applied in the 1st experiment whereas they were found to be 83.7, 90.2, 87.4, 78.9, 82.6 and 86.1%, respectively in the 2nd experiment (Table 1, Fig. 3). The rates of male individuals were observed to be 57.1, 69.8, 69.4, 70.9, 86.1 and 93.7% in the 1st experiment in each experiment tank in different groups at the end of the experiment while they were found to be 49.7, 57.3, 71.2, 68.1, 82.6 and 90.3% in the 2nd experiment (Table 1, Fig. 4). The Condition factors (C) and the Specific Growth Rates (SGR %) were found to be similar in all groups (Table 1).

This study dealt with different hormone concentrations, application type, application time and survival percentages of larvae that were effective on the sex reversal of the Nile tilapia. The inter-group difference was found significant (p<0.05) in the 1st experiment in groups that were fed with feed containing different MT in terms of survival rates whereas the inter-group difference among the survival rates was not considered significant (p>0.05) in the 2nd experiment. According to the histological section samples of the gonads, the rates of male individuals in the population were found to be 57.1, 69.8, 69.4, 70.9, 86.1 and 93.7%, respectively in the 1st experiment while these rates were found to be 49.7, 57.3, 71.2, 68.1, 82.6 and 90.3% in the 2nd experiment. Accordingly, it was found out that there was a significant difference (p<0.05) among the groups feeding with feeds containing different rates of steroid in terms of sex reversal rates in both experiments. While no differences were observed between the reversal rates obtained with similar doses in both experiments, the highest sex reversal occurred at 50 mgMT kg⁻¹ feed dose and 60 mgMT kg⁻¹ feed dose. The masculinization success was found to be high in comparison to the control groups at doses of 20-40 mgMT kg⁻¹ feed. When the results of different doses were compared with each other, it was found that the results of 50 mgMT kg⁻¹ feed dose and 60 mgMT kg⁻¹

feed dose were not different from each other but were different from the others (0, 20, 30 and 40 mgMT kg⁻¹ feed) (p<0.05). The effect of androgen on sex reversal depends on the type of application such as the method used, dose, fish age and size (Demska-Zakes and Zakes, 1995). In this study as well, it was observed that the dose and type of application directly affected the result although, the actual factor in sex reversal was MT. Therefore, specifying the environmental conditions, hormone type and the method used in such applications is of great importance for performing conscious commercial applications, the results of which can be estimated. Although, MT is used mostly in commercial productions in order to obtain a male population, it is also known that other hormones are also effective (Bart, 2001). In spite of this, the most widely used androgen is MT and this androgen has been tried on >25 species of the families Salmonidae, Cichlidae, Cyprinidae, Anabantidae, Poecidae, Cyprinodontidae and Percidae (Malison *et al.*, 1986; Pandian and Sheela, 1995). The most preferred

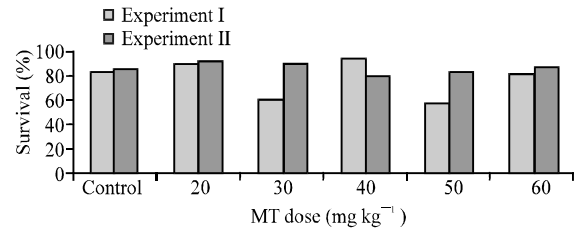


Fig. 3: Survival rates (%) of the groups to which different doses of MT were applied at the end of the experiment

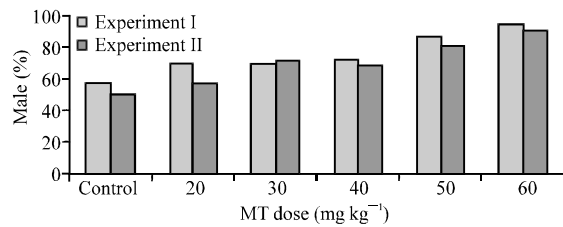


Fig. 4: Percentages of male individuals in groups to which different doses of MT were applied, obtained at the end of the experiment

Table 1: The male rate (%), survival (%), FCR, SGR (%), C found in both experiments at the end of the study. E.I; Experiment I, E.II; Experiment II

Values	Male rate (%)		Survival (%)		FCR		SGR (%)		K	
	E. I	E. II	E. I	E. II	E. I	E. II	E. I	E. II	E. I	E. II
Control	57.1	49.7	81.6	83.7	1.7	1.1	2.07	2.10	1.5	1.7
20 mg kg ⁻¹	69.8	57.3	88.3	90.2	2.1	1.2	2.10	2.20	1.5	1.5
30 mg kg ⁻¹	69.4	71.2	60.0	87.4	1.7	2.2	2.04	2.10	1.6	1.6
40 mg kg ⁻¹	70.9	68.1	91.6	78.9	1.9	1.6	2.10	2.10	1.4	1.5
50 mg kg ⁻¹	86.1	82.6	56.6	82.6	1.5	1.2	2.10	2.20	1.5	1.5
60 mg kg ⁻¹	93.7	90.3	80.0	86.1	1.1	1.1	2.02	2.06	1.7	1.6

application is the method of adding steroid to the feed (Hunter and Donaldson, 1983). In this study, the effects of the most preferred method and type of androgen on the Nile tilapia at different doses were found out. Success in sex reversal applications with hormone depends on the gonadal differentiation period.

The gonadal differentiation that determines sex occurs early in tilapia and salmonidae whereas, it occurs on the 40th day after hatching in some species. It was reported that over 95% of the population was masculinized in 21-28 days when 30-60 mgMT kg⁻¹ feed with synthetic androgen 17 α -methyltestosterone was applied orally to the tilapia larvae (7-12 days of age, 9-11 mm TL and 10-15 mg of total weight) (Barry *et al.*, 2007; Green and Teichert-Coddington, 2000) whereas in this study as well, the highest sex reversal occurred at 60 mgMT kg⁻¹ feed dose which was the highest dose in both experiments and a maximum of 93.7% male population was obtained with orally-administered 60 mgMT kg⁻¹ feed to newly-hatched individuals for 29 days following the consumption of the majority of the yolk sac. Over 82% male individuals were obtained at 50 mgMT kg⁻¹ feed dose while the rate of males in the population was found to be below 70% at and below 40 mgMT kg⁻¹ feed. Even if >95% of the population can be masculinized with 60 mgMT kg⁻¹ feed dose, the fact that 5% are females demonstrates that this is not the optimum dose (Phelps *et al.*, 2007). In the studies, where *O. niloticus* eggs were subjected to different doses of 17 α -Methyltestosterone immersion for 24-96 h, it was reported that besides the fact that about 91% sex reversals were obtained, the sex reversal rates also increased as the dose amount increased. It is difficult to state that the obtained results upon the increase in hormone dose would be affected positively. In Guppies, in immersion application the survival rate (51%) obtained with 25 mg/20 L 17 α -MT was reported to be lower than the one obtained with 12.5 mg/20 L dose (Turan *et al.*, 2006). In another sex reversal study on zander (*Stizostedion lucioperca*), 97% male population was obtained with 17 α MT administered at 30 mgkg⁻¹ dose whereas, 55% males were obtained at 60 mg kg⁻¹ dose (Demska-Zakes and Zakes, 1995). In this study, no difference was found among the survival rates in groups at different doses ($p > 0.05$) whereas the sex reversal rate was observed to have increased as the dose increased until the level of 60 mg kg⁻¹.

Even if over 90% male populations can be obtained by the hormone applications carried out both at egg stage and at larva stage and even if these results which are obtained with oral MT applications are for the time being satisfying the commercial producers, the reasons which will affect consumers negatively such as the fact that 100% success cannot always be achieved in this method and that the fish are exposed to hormone may indicate

that the usability of this application in forming long term production protocols for future may be lost. On the other hand in a study where the effect of MT applications on human health was evaluated, it was found that MT which was suggested to be used for sex reversal at early life stages does not have any negative effects on human food health (Green and Teichert-Coddington, 2000).

CONCLUSION

There are other studies concerning the absence of any MT remains within the fish until the harvesting size, it is strongly possible that this application be replaced by super male production methods. Even though, such applications are envisaged to become usable on mature candidates only in the protocols of obtaining super males with YY chromosome or super females (XX) for the time being it continues to be one of the most preferred methods in commercial productions due to its advantages such as the fact that the methodology of this application is simple and cheap that no special production stocks are needed and that the hormone administered in small amounts is disposed from the body in a short period of time.

REFERENCES

- Abucay, J.S., 1997. Hormonal sex reversal of tilapias: Implications of hormone treatment application in closed water systems. *Aquaculture Res.*, 28: 841-845.
- Barry, T.P., A. Marwah and P. Marwah, 2007. Stability of 17 α -methyltestosterone in fish feed. *Aquaculture*, 271: 523-529.
- Bart, A., 2001. The application of ultrasound to produce all-male tilapia using immersion protocol. 9th Work Plan, Reproduction Control Research 8 (9RCR8), Final Report. Aquaculture and Aquatic Resources Management Asian Institute of Technology Pathumthani, Thailand. <http://pdacrsp.oregonstate.edu/pubs/technical/19tch/9RCR8.pdf>.
- Demska-Zakes, K. and Z. Zakes, 1995. Effect of 17 α -methyltestosterone on gonadal differentiation in pikeperch, *Stizostedion lucioperca* L. *Aquaculture Res.*, 28: 59-63.
- Green, B.W. and D.R. Teichert-Coddington, 2000. Human food safety and environmental assessment of the use of 17 α -methyltestosterone to produce male tilapia in the United States. *J. World Aquaculture Soc.*, 31: 337-357.
- Hunter, G.A. and E.M. Donaldson, 1983. Hormonal Sex Control and its Application to Fish Culture. In: *Fish Physiology*, Hoar, W.S., R.J. Randal and E.M. Donaldson (Eds.). Vol, 9., Academic Press, New York, London, pp: 223-291.

- Macintosh, D.J. and D.C. Little, 1995. Nile Tilapia (*Oreochromis niloticus*). In: Broodstock Management and Egg and Larval Quality, Bromage, N.R. and R.J. Roberts (Eds.). Chapter 12., Blacwell Scientific Ltd., USA, pp: 277-320.
- Mair, G.C. and D.C. Little, 1991. Population control in farmed tilapias. *NAGA, ICLARM Q.*, 14: 8-13.
- Malison, J.A., T.B. Kayes, C.D. Best, C.H. Amundson and B.C. Wentworth, 1986. Sexual differentiaton and the use of hormones to control sex in yellow perch (*Perca flavences*). *Can. J. Fish. Aquatic Sci.*, 43: 25-35.
- Pandian, T.J. and S.G. Sheela, 1995. Hormonal induction of sex reversal in fish. *Aquaculture*, 138: 1-22.
- Phelps, R.P., L.L. Lovshin and B.W. Green, 2007. Sex reversal of Tilapia: 17 α -metilttestosteron dose rate by environmental and efficacy of bull testes. PD/A CRSP Fourteenth Annual Technical Report. <http://pdacrsp.oregonstate.edu/pubs/technical/14tchpdf/2.b.4.pdf>.
- Pompa, T.J. and B.W. Green, 1990. Sex reversal of Tilapia in earthen ponds. Research and Development Series No. 35. International Center for Aquaculture, Alabama Agricultural Experimet Station, Auburn University, USA.,
- Rosenstein, S. and G. Hulata, 1994. Sex reversal in the genus *Oreochromis*: Optimization of feminization protocol. *Aquaculture*, 89: 329-339.
- Turan, F., S. Cek and E. Atik, 2006. Production of monosex male guppy, *Poecilia reticulata*, by 17 α -methyltestosterone. *Aquacult. Res.*, 37: 200-203.
- Varadaraj, K., S. Sindhu Kumari and T.J. Pandian, 1994. Comparison of conditions for hormonal sex reversal of *Mozambique tilapias*. *Progressive Fish. Culturist.*, 56: 81-90.
- Vera Cruz, E.M. and G.C. Mair, 1994. Conditions for effective androgen sex reversal in *Oreochromis niloticus* L. *Asian. Fish. Sci.*, 9: 161-167.
- Vera Cruz, E.M., G.C. Mair and R.P. Marino, 1996. Feminization of genotypically YY Nile tilapia *Oreochromis niloticus* L. *Asian Fish. Sci.*, 9: 161-167.