

## Economic Gentrification and Socio-Cultural Transformation Metropolitan Suburban of Mamminasata

<sup>1</sup>Batara Surya, <sup>2</sup>Haeruddin Saleh and <sup>3</sup>Hasanuddin Remmang

<sup>1</sup>City and Regional Planning Programme,

<sup>2</sup>Department of Regional Economy,

<sup>3</sup>Investment Urban Management Programme, Bosowa University Makassar, Makassar, Indonesia

---

**Abstract:** Suburban development that is oriented to the economic activities' functions development characterized by gentrification, suburbanization and re-investment becomes the determinant of changes in space utilization towards the commercial activities' functions. This research aims to examine, analyze the economic gentrification and describe the socio-cultural transformation in the metropolitan suburban of Mamminasata. The data were obtained through observation, survey and documentation. The research results show that the distribution flow of goods and services, labor migration and increased economic productivity causes social mobility vertically and horizontally. The increased economy activities towards the development of growth pole and agglomeration of the metropolitan suburban of Mamminasata causes socio-cultural transformation towards interaction and adaptation differences on developed spatial functions. Socio-cultural transformation characterized by inequality of spatial reproduction tenure which causes social change, society segmentation, marginalization and poverty of local communities.

**Key words:** Economic gentrification, suburbanization, socio-cultural transformation, suburban, local communities, spatial reproduction tenure

---

### INTRODUCTION

Space utilization of suburban tends toward the development of economic growth poles marked by re-investment and high capital flow. The growth is marked by the improved services of transportation, urbanization, society standard living enhancement and private sector involvement in the development (Kim and Choi, 2018). In the perspective of more macro-areas, it suggests that the metropolitan suburban of Mamminasata are expanding due to inter-regional, intercity and suburbanization relations (Surya, 2016a). The process of economic gentrification and suburbanization is in line with the enhancement in population number and the meeting of economic interest between migrants and local people (Yunus; 2008; Surya, 2016b). Growing attention has been paid to the way public and private sectors collaborate in preparing and managing urban projects in the context of public-private partnerships (Lehrer and Laidley, 2008; Fainstein, 2008; Orueta and Fainstein, 2008; Tasan-Kok, 2009; Heurkens and Hobma, 2014). Therefore, private sector role is the determinant in managing investment and acceleration of development in metropolitan suburban of Mamminasata.

Economic service scale enhancement is not only affected by the expanding of Makassar Region as a city in the metropolitan urban system of Mamminasata but it is also affected by external factors, namely economic

globalization at the macro level and the current trend of competition between world cities has led to some remarkable transformations of the city (Surya, 2014b; Leducq and Scarwell, 2018). Capital flow is very significant, it causes the increase of transportation flow and encourages urban agglomeration to evolve towards industrialization, suburbanization, urban growth and change of land use in surrounding rural areas. Urban growth is inevitably linked to suburban areas, the zones of transition from rural to urban land uses located between the outer limits of urban and regional center and the rural environment and increasing problem of urbanization demands a new approach to deal urgently with a built environment (Surya, 2015a; Maheshwari *et al.*, 2016; Martin-Diaz *et al.*, 2018). This perspective confirms that economic growth-oriented development will encourage the enhancement of development investment and the complexity of the built environment in metropolitan suburban area. Development investment in private sector will encourage the capital enhancement for a certain period of time to gain long-term benefits (Sunariyah, 2003). Development investment that tends to increase in the metropolitan suburban of Mamminasata triggers inequality of land tenure and then moving towards domination of space reproduction control by capital-intensive groups characterized by the intensity of development in residential, commercial, industrial, service and infrastructure sectors.

The development in Manggala, Hertasing-Samata and Moncongloe-Pattalassang regions as the metropolitan suburban of Mamminasata for 10 years has utilized 3,133.33 Ha of land. Dominant developed investment is in the residential, industry, commercial and service sectors. It causes a quite significant increase of land price. In 2010, the average price of land in these three locations was IDR 190,000/m<sup>2</sup> and in 2017-2018, the selling price and land price increased by IDR 1,717,000/m<sup>2</sup> or 11.07% from the previous condition. This will continue to increase in line with population enhancement and changes in urban space function. It means that economic transformation characterized by economic gentrification causes socio-cultural transformation of the society in metropolitan suburban of Mamminasata.

**MATERIALS AND METHODS**

**Approach to case study and research methodology:** Makassar urban expansion was the determinant factor of

economic gentrification towards socio-cultural transformation in metropolitan suburban of Mamminasata. Development intensity caused capital flow enhancement, suburbanization, population increase and land value change. Case study selected in this study was addressed to analyze, describe and examine economic gentrification as a determinant factor of sociocultural transformation in suburban area. In accordance with the focus of the research then this research is naturalistic, holistic and phenomenological (Densin and Lincon, 2009; Creswell, 2016; Sugiono, 2016).

The case study was selected because, economic gentrification through re-investment in metropolitan suburban of Mamminasata was specific. The case context had pattern, consistency, implication and sequence which were very prominent. The case context was quite complex and the case nature was intended to understand the event occurring in the dynamics of suburban development. Field research was conducted on June 2017-April 2018 in metropolitan suburban of Mamminasata (Fig. 1). This

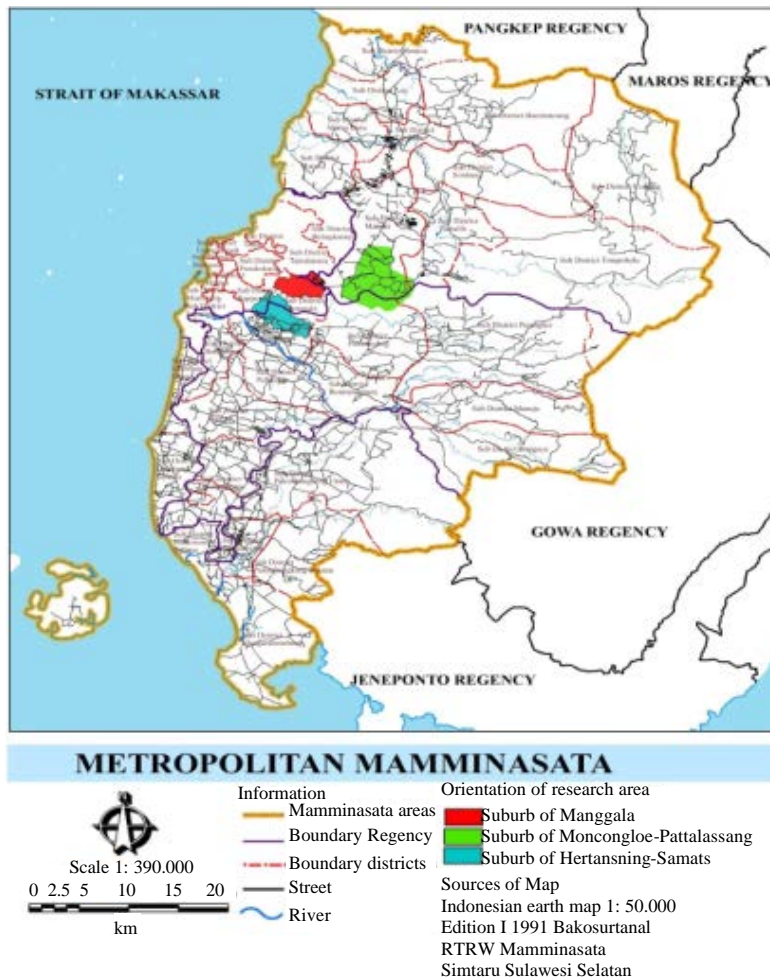


Fig. 1: Research location of metropolitan Suburban of Mamminasata; Research observation and satellite image, 2018

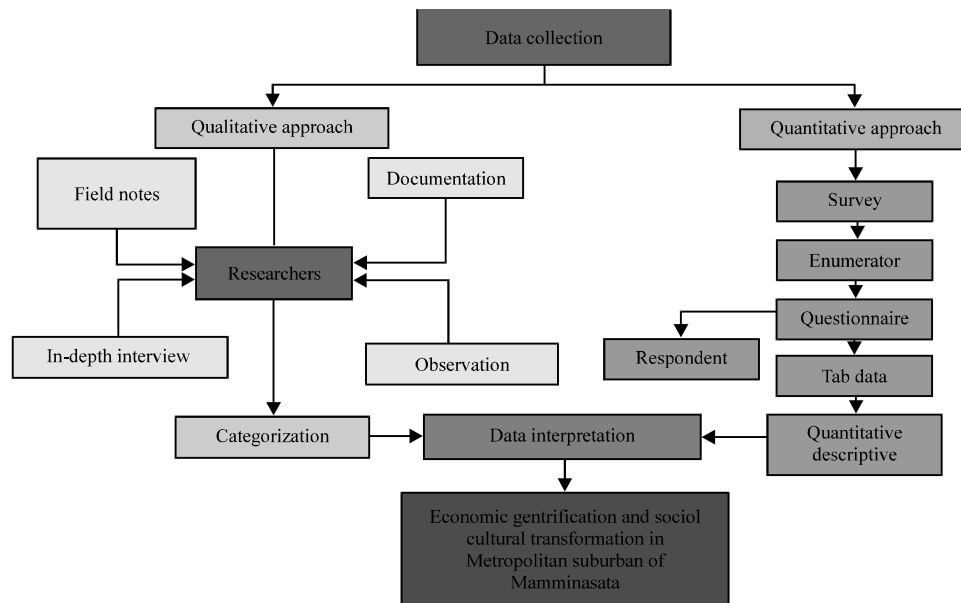


Fig. 2: Combination process of qualitative and quantitative research; Adapted from Saefullah with mods

research used a combination of qualitative-quantitative approach. The philosophical reasons of combining both approaches were triangulation logic, qualitative research results were re-checked in quantitative approach and vice versa, quantitative and qualitative approaches were combined to provide general descriptions, quantitative approach was used in structural characteristics of social life and qualitative approach dealt with the quality of the subject as a starting point, so, both approaches were presented simultaneously in the research, quantitative approach was used to analyze the relation among changes while qualitative approach was used to coordinate factors underlying the established relationship, quantitative approach was used to reveal the structural features of large-scale social life while a qualitative approach was used for small-scale behavioral. When the researchers attempted to reveal the two levels then the combination of quantitative-qualitative was used simultaneously and to obtain data from two different realities, combination of the two research approaches was required.

Data collection methods in this research were observation, it was used to observe economic gentrification related to the space utilization changes and the changes of land value and price, survey, it was used to observe social interaction and adaptation based on respondent perception due to economic gentrification and socio-cultural transformation metropolitan suburban of Mamminasata and documentation, it was used to obtain data related to the research that has been conducted in metropolitan suburban of Mamminasata. Data analysis methods were performed by, performing categorization for

qualitative data and using descriptive statistical analysis for quantitative data, then these two data were analyzed using triangulation interpretation. This analysis was performed interactively and continuously until the data was saturated. Activities in the data analysis were, data reduction, data display and conclusion (Fig. 2).

## RESULTS AND DISCUSSION

Suburban developed in the perspective of metropolitan region of Mamminasata is basically intended to improve society welfare and accommodate various development interests that are realized through the allocation of land allotment. In spatial context, providing understanding that suburban development is an urban system and its scope should be expanded in relation to the rapid natural resources utilization, human resources and population growth while the city core is undergoing stagnation and degradation of population as part of mega-urbanization process (Firman, 2004; Yunus, 2005; Surya, 2016a). Suburban development basically refers to five key points, namely, residential facilities provision for the purpose of supplying the needs of housing and settlements, transportation infrastructure provision for the purpose of facilitating the movement of society and goods, employment provision for the purpose of reducing unemployment, urban facilities provision as a medium for supplying individuals and community groups interests and improvement in this case is supporting facilities and infrastructure to support various economic activities, social and environment.

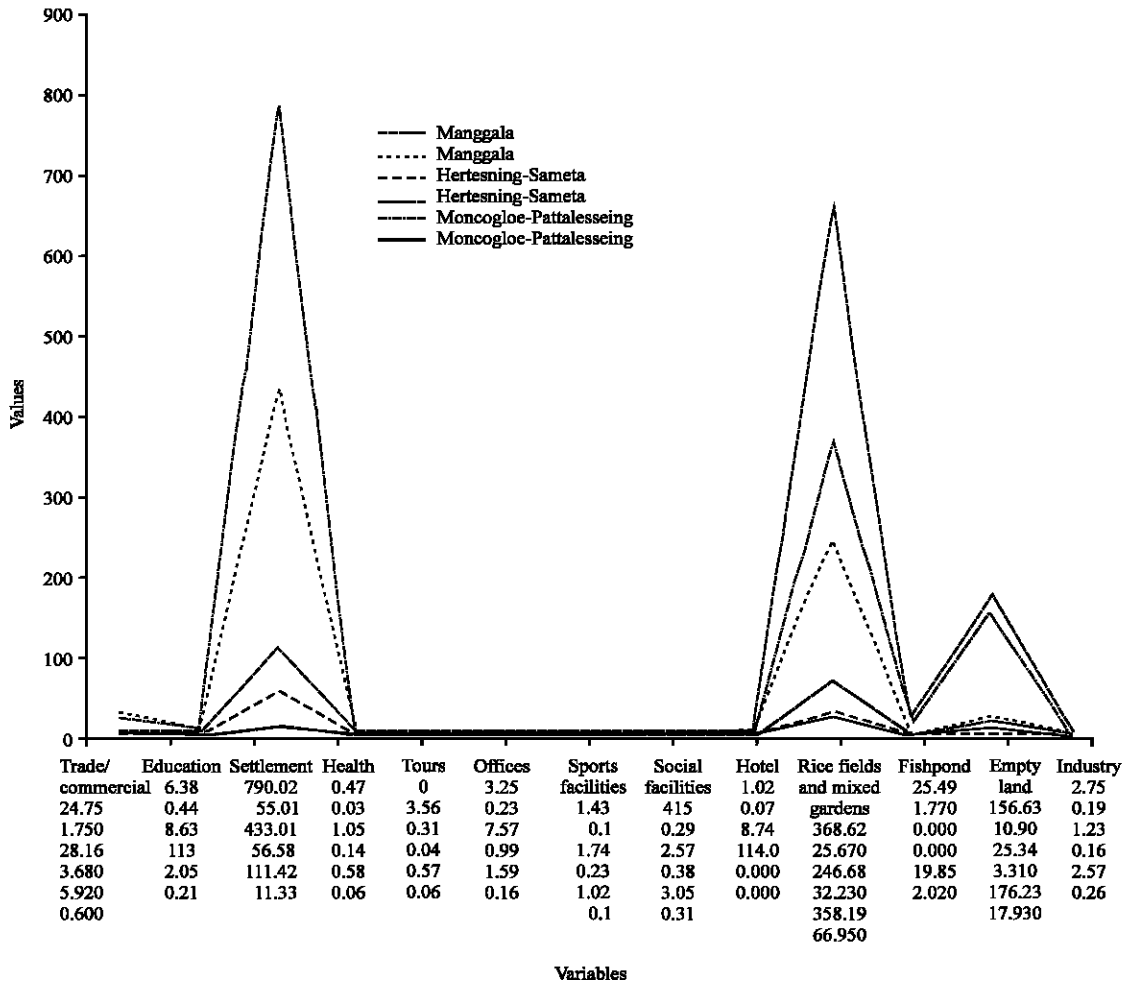


Fig. 3: Space utilization in the metropolitan suburban of Mamminasata; Research observation and satellite image

The dynamics of metropolitan suburban of Mamminasata oriented to economic growth is in line with the construction of the main road corridors which serves to connect the downtown area with several surrounding cities. The road corridors concerned are Perintis-Kemerdekaan road in the North and East of 12.2 km connecting the city of Makassar to Maros Regency, Hertasing-Samata road in the North connecting the city of Makassar to small towns in the urban area of Gowa regency and Abdulah Daeng Sirua road connecting the city of Makassar to Moncongloe-Pattalassang suburban towards Hasanuddin International Airport. The existence of the road corridors causes spatial interactions between urban areas and an increase in the flow of goods and people. Inter-regional interactions are reflected in the state of the transportation facilities and the flow of people, goods and services and the aspects of density, continuity, cluster degree, centralization and development

of the core of the city as well as the measurement indicators of good land allocation (Chang and Chiu, 2013). Therefore, the functions and roles of urban transport services contribute positively to the enhancement of movement and distribution flows of goods and services as well as changes in the land allocation to metropolitan suburban of Mamminasata.

Utilization of dominant space (Fig. 3) provides description that suburban tends towards the development of economic services centers. This is characterized by the main function of the region which is for trading while industry and settlement are the supporting functions. This fact emphasizes that the development of the metropolitan suburban of Mamminasata is oriented towards economic gentrification, suburbanization and urban agglomeration. Agglomeration appears as the outcome of the interaction of increasing returns, trade costs and factor of price differences, linkage between city

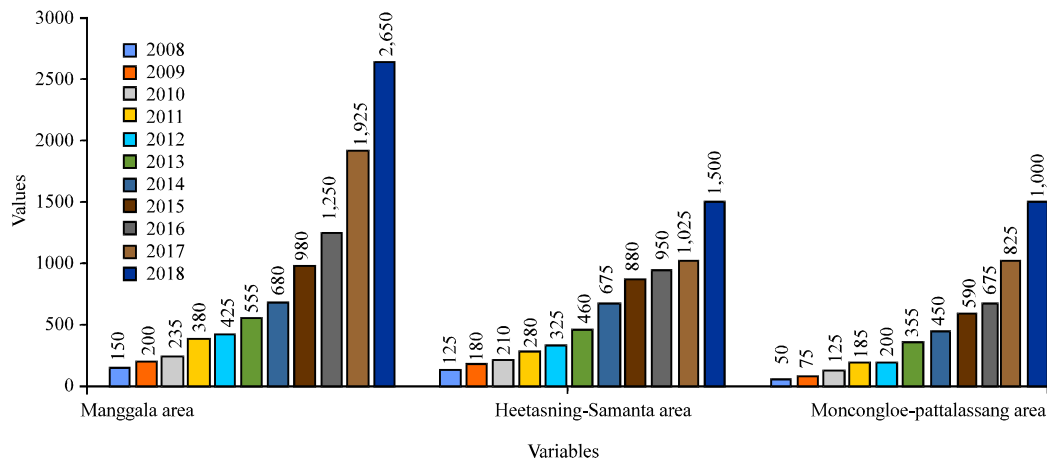


Fig. 4: Land price increase in the metropolitan suburban of Mamminasata; primary data, 2018

center and plays the main role in supplying resources and services of environment for surrounding city (Novianty, 2015; Lincaru *et al.*, 2016; Bedini and Bronzini, 2016; Liu *et al.*, 2016).

**Gentrification of the metropolitan suburban of mamminasata:** Suburban gentrification becomes a very intensive driving force for the functional shifting of agricultural land. Issues arising from the process of peri-urban transformation and in the corridor areas are the rapid economy activities increase from agriculture to non-agriculture, change of land use towards urban housing, industry, population density increase and land price enhancement without being accompanied by adequate control instruments (Winarso *et al.*, 2015). The presence of industries, services, logistics and distribution platforms, enterprises, housing and chain-stores constitutes a manifestation of this effect (Almuna *et al.*, 2012). Thus, the acceleration of development in metropolitan suburban of Mamminasata is positively contributing to the landscape change of surrounding urban and rural areas. This is characterized by industrial development, large-scale settlements and other socio-economic activities. The facts encourage city formation as the center of creativity and culture reflecting the vitality and several social and economic opportunities (Inoguchi *et al.*, 2015). Economic productivities enhancement in metropolitan suburban of Mamminasata causes land price increase and the land price is very determined by economical space functions (Yunus, 2006; Surya, 2015b).

The intensity of development and land price increase (Fig. 4) in metropolitan suburban of Mamminasata positively contributes to the developed economic transformation. This is characterized by the presence of

the functions of trade, industry, tourism, colleges and the enhancement of goods and services distribution flow to their hinterland areas. Economic activities which are developed and initiated by the migrant population have a tendency towards formal economy, among others: shops, restaurant businesses, cafes, services and hotels. Meanwhile, the local communities' business has a tendency towards informal urban activities, among others, stalls, secondhand clothing sellers and other informal businesses as well as the location selection along the main road corridors. Basically, the growing business is a form of the existence of both communities due to changes in space functions of urban areas. The most important aspects in human social life are self-existence and social space. These aspects will gradually change as spatial and mental structure shifting in which space is one of the places of power (Bourdieu 1997; Moura, 2016). It means that the existence of communities in the metropolitan suburban of Mamminasata will undergo the process of interaction, adaptation and work orientation shifting due to environmental stimulus. Thus, economic transformation causes socio-cultural transformation characterized by work orientation shifting in local communities from entirely agriculture toward urban informal economic activities. Functional shifting of land use in suburban causes shifting in production means to the reproduction of urban space and social change of urban communities (Lee, 1979; Lefebvre, 1981; McGee, 1997; Yunus, 2008; Surya, 2015b).

Socio-cultural transformation related to the technological progress that is going to involve feudal structure of the capitalist system, production capacity enhancement, industry creation and transportation enhancement is the factor causing a large scale urban transformation (Yunus, 2006; Martin, 2016). Socio-cultural

transformation is started with social change in the local communities, namely the change of social system, social structure, social order, social dynamics, social mobility and cultural pattern (Surya, 2014a). It is characterized by orientation shifting in production activities through technology utilization, the role of transportation services, then evolves towards economic agglomeration.

Economic agglomeration is developed along with the development of metropolitan suburban of Mamminasata. This condition tends towards the unification of market areas due to infrastructure and government policy support. In a perfect market, the economic actors are rational and striving to achieve the maximum level of satisfaction and maximize its business power (Sukirno, 2010; Surya, 2016b). Agglomeration related to market area due to the meeting of two or more different economic activities (Dahuri dan Nugroho, 2012; Tarigan, 2014). The size of market area of each producer becomes meaningless. Because of agglomeration, market areas tend to merge though they are not identical. Every emerging market center has an influence on its complementary territory (Adisasmita, 2014). It describes that it encourages the formation of urban hierarchy in the metropolitan suburban of Mamminasata and have a direct effect towards the environment ecosystem in more macro-area perspective. New urban growth will manifest itself in the urban forms and spatial structures and what kind of ecological impacts the new growth will bring (Sui and Zeng, 2001).

**Socio-cultural transformation of Suburban:** Social system is a dependence relationship between economic and non-economic factors (Todaro and Smith, 2011; Surya, 2015c). The difference of economic system and social system among communities in the metropolitan suburban of Mamminasata due to economic gentrification is showed by the differences in the modes of developed production and the expanding market economy through the process of integrating urban activity system and transportation system supports. These conditions lead to differences in economic relationship and wealth among communities. Developed economic transformation orientation is implied directly towards the process of labor migration from entirely traditional agrarian towards formal and informal urban industrial.

Formal trading sector as a new building in a region not only affects the visual but also the activity patterns or activities around the building (Purnamasari, 2013). Developing formal sector will affect the emerging informal sector with the economic business diversity. This condition causes dualistic economic model in suburban (Yunus, 2008; Surya, 2015a). There are two indications

appear related to the economic transformation process based on immigrant population and local communities motivation, namely, economic activities initiated by immigrants population expands towards capitalistic economy through formal economic activities functions, it fluctuates, it is highly determined by market economic system, highly dependent on demand for goods and services and oriented to value of profit as high as possible. Dialectic relationship among economic structure of capitalist, system of idea and individual thinking has effect on individual acts (Weber, 2007; Ritzer, 2012). Economic activities initiated by local communities tend towards urban informal economic activities due to limited business capital. The types of economic business developed are street vendors, stalls, mobile vegetables and fruits sellers and the like by selecting strategic locations for the purpose of being closer to consumers and oriented to existence due to changes in environmental stimulus (Yudono, 2013; Surya, 2016b).

Economic activities which are under the formal status brought by capitalism are characterized by the existence of business entity in the form of corporation and family or individual business entity under one regulation/rule as well as supported by mastery of technology and complex production organization categorized as formal sector and oriented to gain profit as much as possible (Yunus, 2006; Surya, 2015a). Whereas those outside the rules representing the poor are referred to as informal sector. They use simple production technology and organization which are oriented to subsistence and commercial production as a transition. Therefore, land and space allocations are highly determined by income and existence of urban commercial functions (Harvey, 2009; Surya, 2015a). The closer the distance to the commercial activity center, the higher the land value and vice versa. Consequently, the rationality preference of action among communities will always be choosing strategic locations to develop their economic activities (Habermas, 2007; Surya, 2015c).

Socio-cultural transformation in accordance with the development stage to be conducted becomes the driving force of social change in local communities. The emergence of various interests among communities is largely determined by the developing spatial arrangement and spatial pattern. Economic transformation due to capital flow affects significantly on social change of local communities. Due to the difference in space reproduction mastery in both individuals and groups, consequently the spatial articulation does not run optimally (Surya, 2015b). Then, this process causes diversity in characteristics and typology of society between immigrants and local

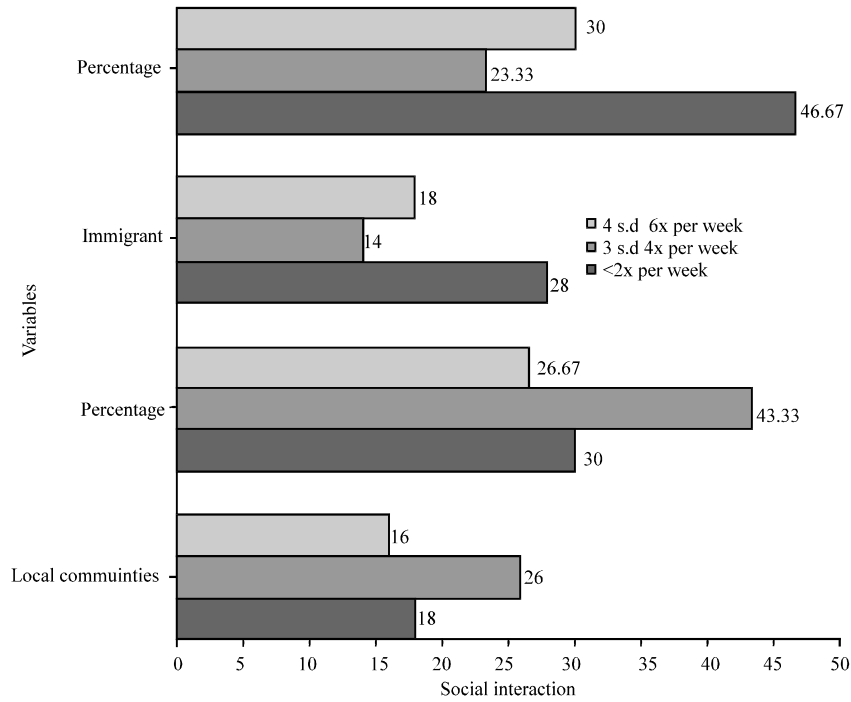


Fig. 5: Social interaction between local communities and immigrants in the metropolitan suburban of Mamminasata; primary data, 2018

communities. Then, this diversity expands toward interaction and social adaptation change and highly dependent on developing space situation.

Interpretations related to Fig. 5 are social interaction in local communities is not only happening in one place but also in other places, social interaction process of an individual in local communities with an individual in immigrant population especially those who are occupying elite housing, basically they are not in a unity of residential environment but they are in a location of same area. Social interaction is more of merchandise exchange which is valued with money. It means that the intensity of interaction between individuals in local communities shows a shift of values that initially have tight social ties towards social ties that are relatively loose due to the changing environmental situation, even though the social interaction is quite high but it tends to be in the relationship of business inter-individuals in local communities that is mutualistic, the frequency of social interaction between individual in local communities with individual in immigrants population occurs due to the interdependence between sellers and buyers and the nature of mutual benefit of both parties.

Differences in the motivation of economic activities, social relations and lifestyles among communities lead to social formation as a social system of urban communities. Social interaction tendency of migrant population based

on their dominant motivation to utilize the functions of economic activities that are developed, among others, shopping centers, cafes/restaurants, shops, services, hotels and other centers of economic activities. Meanwhile, local communities tend to utilize a space situation that is developing towards informal economic activities and on their business environment as well as their residence. Differences in wealth, space reproduction tenure, lifestyle and spatial articulation accommodated through spatial functions cause a distinction between capitalist space led by immigrants population and pre-capitalist space led by the local communities, originally a single and homogeneous formation towards the formation of double and heterogeneous society.

Interpretation related to Table 1 are first, space utilization shifting causes change from single social formation to double social formation. The change is in line with the social mobility of local communities vertically and horizontally. Second, developing economic gentrification has a selective nature. So that, it has an impact on the formation of society segmentation, it continues to individual turnover and evolves until it is out of the group segment. Third, the informal segment is increasing or there is an involution due to the increasing number of immigrant population along with the process of space utilization change. This process is characterized by shifting in the work orientation of local communities from

Table 1: Social adaptation between immigrants population and local communities in metropolitan suburban of Mamminasata

Parameter	Social formation (pre-capitalist)	Social formation (capitalism)
Characteristics and social system of the society	Rural agriculture social life pattern homogenous	Urban life pattern heterogeneous
Production mode and employment	Egalitarian (employer and employee work relation)	Working classes relation (class contradiction)
Production method	The main family as a production unit Land as means of production Agricultural commodities as the results of production for subsistence needs fulfillment	Employer and employee relation and contractual Capitalist institutions relation Space as means of production Services and labor as commodities
Organizational structure of production	Relatively simple	Complexity through network of business cooperation
Land ownership	Family domination based on lineage	Capital owners domination

Primary data, 2018



Fig. 6: Spatial segregation of residential areas in the metropolitan suburban of Mamminasata; Primary data, 2018

farm laborers to construction workers and some informal traders move vertically to become independent entrepreneurs who originally relied their lives on becoming landowner farmers. Economic activities reposition of local communities dominated by informal economy activities has a direct relationship with the existence of urban villages in the metropolitan suburban of Mamminasata as a morphology of an informal city.

The massive development of settlement areas from small to large planned segments of the metropolitan suburban of Mamminasata has further created urban space gap dominated by expansionist resident settlements to local communities' settlements. Increasingly, it tends towards the social segregation process between local communities and immigrants population.

Spatial segregation of residence (Fig. 6) in the metropolitan suburban of Mamminasata, especially related to the existence of local communities and expansionist immigrant population settlements is a unique phenomenon. Field facts show that the growing form of segregation has differences based on its formative

process, namely artificial segregation. It can be seen from the emergence of new housing complexes that are designed for certain groups. The new occupants will gradually form a new community. This fact is characterized by the emergence of housing built from luxurious type to very luxurious type. Fourth, social mobility causes changes of the social structures and local communities of cultural patterns and the nature of change is fundamental because it changes social conditions in general.

Differences in social interaction and adaptation evolve toward patterns of social relationship among communities. The immigrants tend towards economic motivation while the local communities tend towards kinship relationship pattern in community group ties. Social capital is established on the basis of inter-individual relationship within community groups based on economic trust and social relation (Fukuyama, 2002; Sanderson, 2003; Coleman, 2011). The pattern of social relationship established among communities is illustrated in the following socio-metric relationship.



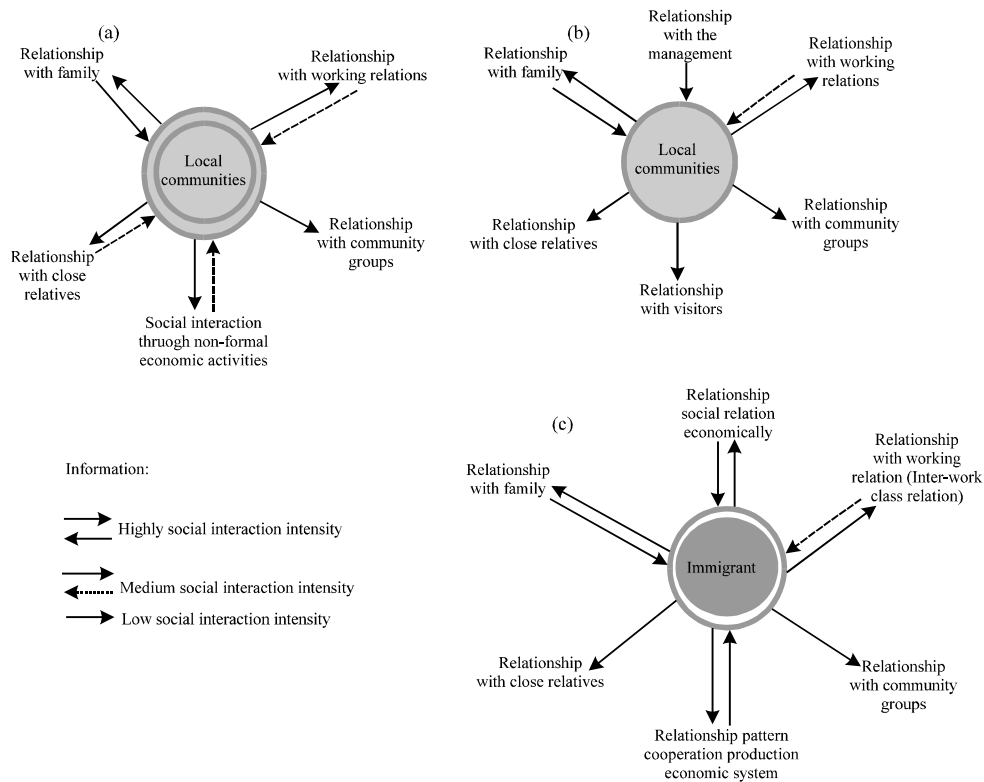


Fig. 7: Differences in social interaction and adaptation between immigrants and local communities in the metropolitan suburban of Mamminasata; Analysis results: a) Interaction pattern and social adaptation of local communities on shifting space functions of new town area; b) Interaction pattern and social adaptation of local communities in immigrants population economic system and c) Interaction pattern and social adaptation of immigrants population in urban formal economic system

There are three interpretations related to Fig. 7, namely, first, the informal economic system developed by local communities show highly intensive social interaction with family. This condition is affected by emotional closeness factor. In addition, the value system in the family plays roles as the spirit and motivation in economic business activities development. Three basic needs of the individual as a basis of motivation in meeting the needs are existence, relatedness and growth (Jamaluddin, 2015; Surya, 2015c). Relationship patterns and social relation are built on the requirements of needs. So that, the driving force of developing creative and productive business is included as a form of adaptation on individuals and community groups due to changes in environmental stimulus.

Family and tribal relationships have a significant effect on the community organization and it determines one's position in society (Sukirno, 2007; Damsar and Indrayani, 2013). It means that family has an important role in supporting the successful of informal economic business activities developed by local communities and relationship patterns of mutual social interaction. In other words, the social interaction is mutualistic by making

mutual agreements. Social interaction with close relatives indicates the decreased frequency of interaction, including in community groups. This condition occurs because relatives and community groups have no direct effect on the developed economic business activities.

Second, social relationship pattern of local communities on formal economic activities developed by immigrants indicates intensive social interaction relationship with the main family as the smallest social unit. This condition is affected by emotional closeness factor. In addition, family is the main motivation that encourages the family's welfare improvement. The media used is the existence of commercial activities functions established by the immigrant population. Social relations built among workers and the intensity of interaction is categorized as high and the commercial economic activities functions are as a medium for the social interaction process by creating a fairly intensive mutual communication. It means that economic transformation has a positive effect on the social interaction process among communities and the media of social contact is the relation among workers in the social formation structure of capitalism.

Economic gentrification in the metropolitan suburban of Mamminasata positively affects the lives of local communities, especially in relation to the formal economic activities development in the social formation of capitalism. This process shows that the relationship with family and relatives is relatively decreased and not mutual. The social interaction between local communities as the employee and the management is one-way and controlling the implementation of work. It means that in the social formation of capitalism, controlling over work is authoritative through the relationship among classes of worker. This fact provides illustration that the presence of economic structure of capitalist is the driving force of social changes. This means that the process of social interaction is more dominantly affected by working or business relations and it is supported by the existence of economic activities' functions. The social change trends of the local communities move to the structural level and rationalize actions at the cultural level. The cultural leadership is run by the ruling class and hegemony will help to understand the dominance of revolution-oriented capitalism, so that, its orientation to the cultural level is the reality of modern capitalist society (Ritzer, 2012; Suyanto, 2014).

Next, the process of social interaction and social adaptation then expanding towards social differentiation. It means that spatial articulation ability in local communities is entirely incomplete and optimum. This condition is characterized by different strata, status and social classes. The developing social differentiation resulted in the fragmentation of local community lives based on differences in job variation, prestige and group power in the society as well as differences in the social interaction process. There is no unstratified society or no class at all (Ritzer 2015; Bangun, 2014). It means that economic transformation, gentrification and suburbanization causes different strata, status and classes in society which is highly determined by capabilities and achievements that can be achieved.

Third, social relationship patterns in the formal economic system initiated by immigrants population tends towards the creation of the highest profits and economic business activities developed in the form of collaboration of large-scale trading business and established using technology. Then, social relationship patterns move towards economic relation based on economic interests in the control of space reproduction. There are four things appear related to social relationship patterns on immigrants population's economic system, namely, domination of production economic activities, it is characterized by land tenure, authority, it is characterized by an autonomous relation that is a relationship of

interdependence based on capitalistic economic system, conflict, it is characterized by antagonistic relationship built on relationship among working classes and contradiction, it is characterized by structural principles opposition built on the mechanism of work and full control over workers. These four processes indicate that the emergence of economic activities of immigrant population through penetration and invasion evolves towards the authorization and domination of urban production sectors in the development dynamics of the metropolitan suburban of Mamminasata and affects wealth disparities, social inequalities and social segregations. The contradiction tendency including conflicts weakened as long as the contradictions are separated from each other (Giddens, 1984). Thus, socio-cultural transformation which is not supported by the community protection since the beginning of the metropolitan suburban of Mamminasata development is predicted to experience fragmentation and segmentation. It occurs because of adaptation ability differences on the developing space functions.

Adaptation inability of local communities to urban space functions causes marginalization and poverty. Marginalization on local communities directly leads to the utilization of vacant spaces in the suburban through the penetration process, thus it causes the development of slums and occupation of illegal land. Marginalization on local communities due to economic gentrification and socio-cultural transformation leads to differences in ability and capability as well as differences in rights and access for space reproduction resources. The justification of marginality is measured by indicators like: poverty, physical weakness isolation, vulnerability and helplessness in the control of space reproduction and access to economic resources.

## **CONCLUSION**

The change of space utilization due to economic gentrification in the metropolitan suburban of Mamminasata causes socio-cultural transformation. Economic social activities enhancement becomes the determinant factor of land price increase and it is highly determined by space functions economically. Space utilization is leaning towards commercialization which causes different social interaction and adaptation among communities as well as expanding on social relation economically. The immigrants tend towards economic motivation while the local communities tend towards kinship relationship pattern in a community group ties.

Socio-cultural transformation in the metropolitan suburban of Mamminasata due to economic gentrification

is selective and it positively contributes on the formation of community segmentation and increases in the number along with the process of space utilization change. The implication is the dominant economic activities reposition of the local communities on informal sector and it has direct relationship with the existence of urban village as an informal morphology in the metropolitan suburban of Mamminasata.

Process of social interaction and adaptation is dominantly affected by work relation or business relation supported by the existence of economic activities' functions. The social change trends of local communities move to the structural level and rationalize actions at the cultural level. Spatial articulation ability which is not perfect and optimum resulting in social differentiation towards fragmentation based on different job variation as well as the emergence of immigrant economic activities through penetration and invasion then expanding toward space reproduction control and urban production sectors domination. Consequently, it affects wealth disparities, social inequality and social segregation.

#### REFERENCES

- Adisasmita, R., 2014. Region Spatial Economy. Graha Ilmu, Yogyakarta, Indonesia, Pages: 413.
- Almuna, E.A., M.C. Alonso and V.S. Manriquez, 2012. Industrialization, development and city: Socio-demographic and spatial transformations in the social geography of the great Concepcion (1950-2010). *Rev. INVI.*, 27: 21-71.
- Bangun, W., 2014. Micro Economic Theory. Refika Aditama, PT, Bandung, Indonesia,.
- Bedini, M.A. and F. Bronzini, 2016. The new territories of urban planning: The issue of the fringe areas and settlement filaments. *Land Use Policy*, 57: 130-138.
- Bourdieu, P., 1997. [The Misery of the World]. 5th Edn., Editora Vozes Publishing House, Petropolis, Brazil, (In Portuguese).
- Chang, H.S. and S.L. Chiu, 2013. Discussion on sustainable land use allocation toward the sustainable city: A practice on Linco New Town. *Procedia Environ. Sci.*, 17: 408-417.
- Coleman, J., 2011. [Fundamentals of Social Theory Foundation of Social Theory]. Nusa Media, Bandung, Indonesia, (In Indonesia).
- Creswell, J.W., 2014. Research Design: Qualitative, Quantitative and Mixed Methods Approach. 4th Edn., SAGE Publications, Thousand Oaks, California, USA., ISBN:978-1-4522-2609-5, Pages: 274.
- Dahuri, R. and I. Nugroho, 2012. Regional Development: Economic, Social and Environmental Perspectives. LP3ES Publisher, Indonesia,.
- Damsar and Indrayani, 2013. Economic Sociology. PT. Kencana Prenada Media Group, Jakarta, Indonesia,.
- Densin, N.K. and Y.S. Lincoln, 2009. Handbook of Qualitative Research. Student Library Publishing, Yogyakarta, Indonesia,.
- Fainstein, S.S., 2008. Mega-projects in New York, London and Amsterdam. *Intl. J. Urban Reg. Res.*, 32: 768-785.
- Firman, T., 2004. New town development in Jakarta Metropolitan Region: A perspective of spatial segregation. *Habitat Intl.*, 28: 349-368.
- Fukuyama, F., 2002. Trust; Social Policy and the Creation of Prosperity. Penerbit Qalam Publisher, Yogyakarta, Indonesia,.
- Giddens, A., 1984. The Constitution of Society: Online of the Theory of Structuration. University of California Press, Berkeley, California, USA., Pages: 407.
- Habermas, J., 2007. [Theories of Communicative Action, Volume I: Action and Social Rationalization (Translated by Nurhadi)]. Kreasi Wacana Penerbit, Yogyakarta, Indonesia, (In Indonesian).
- Harvey, D., 2009. [Neoliberalism and Restoration of the Capitalist Class]. Resist Book Publisher, Yogyakarta, Indonesia, (In Indonesian).
- Heurkens, E. and F. Hobma, 2014. Private sector-led urban development projects: Comparative insights from planning practices in the Netherlands and the UK. *Plann. Pract. Res.*, 29: 350-369.
- Inoguchi, T., E. Newman, G. Paoletto, 2015. [City and Environment: New Approach to Ecological Knowledge Society]. LP3ES Publisher, Indonesia, ISBN:979-979-3330-10-4, Pages: 392 (In Indonesian).
- Jamaluddin, A.N., 2015. Urban Sociology: Understanding the City Society and its Problems. CV. Pustaka Setia, Bandung, Indonesia, (In Indonesian).
- Kim, Y.J. and M.J. Choi, 2018. Contracting-out public-private partnerships in mega-scale developments: The case of New Songdo City in Korea. *Cities*, 72: 43-50.
- Leducq, D. and H.J. Scarwell, 2018. The new Hanoi: Opportunities and challenges for future urban development. *Cities*, 72: 70-81.
- Lee, L., 1979. Factors affecting land use change in the rural-urban fringe in grow and change. *J. Reg. Dev.*, 10: 34-37.
- Lefebvre, H., 1981. [The Production of Space]. Anthoropos Publisher, France, Europe, (In French).
- Lehrer, U. and J. Laidley, 2008. Old mega-projects newly packaged? Waterfront redevelopment in Toronto. *Intl. J. Urban Reg. Res.*, 32: 786-803.
- Lincaru, C., D. Atanasiu, V. Ciuca and S. Pirciog, 2016. Peri-urban areas and land use structure in Romania at LAU2 level: An exploratory spatial data analysis. *Procedia Environ. Sci.*, 32: 124-137.

- Liu, Z. and G.M. Robinson, 2016. Residential development in the peri-urban fringe: The example of Adelaide, South Australia. *Land Use Policy*, 57: 179-192.
- Maheshwari, B., V.P. Singh and B. Thoradeniya, 2016. Balanced Urban Development: Is It a Myth or Reality?. In: *Balanced Urban Development: Options and Strategies for Liveable Cities*, Maheshwari, B., V. Singh and B. Thoradeniya (Eds.). Springer, Cham, Switzerland, ISBN:978-3-319-28110-0, pp: 3-13.
- Martin, M.T.P., 2016. [Metropolization affected by globalization: epistemological reflection on the new urban revolution (In Spanish)]. *Cuadernos Geografia Rev. Colombiana Geografia*, 25: 77-105.
- Martin-Diaz, J., P. Palma, J. Golijanin, J. Nofre and M. Oliva *et al.*, 2018. The urbanisation on the slopes of SARAJEVO and the rise of geomorphological hazards during the post-war period. *Cities*, 72: 60-69.
- McGee, T.G., 1997. The Emergence of Desa-Kota Region in Asia: Expanding a Hypothesis. In: *The Extended Metropolis and Settlement Transition in Asia*, Ginsburg, N., B. Koppel and T.G. McGee (Eds.). University of Hawai'i at Mānoa, Honolulu, Hawaii, pp: 3-25.
- Moura, R., 2012. [The urban-regional dimension in contemporary metropolization (In Portuguese)]. *EURE. Santiago*, 38: 5-31.
- Novianty, E., 2015. Balancing local government capacity for a sustainable peri-urban development: The case of Karawang Regency. *J. Reg. City Plann.*, 26: 71-85.
- Orueta, F.D. and S.S. Fainstein, 2008. The new mega-projects: Genesis and impacts. *Intl. J. Urban Reg. Res.*, 32: 759-767.
- Purnamasari, D.W., 2013. Conceptual model of urban village space adaptation as a result of formal trade sector (Sekayu Urban Village of Semarang City). *Tata Loka*, 15: 140-159.
- Ritzer, G., 2012. *Modern Sociological Theory* (Translated by: B.S. Triwibowo). 7th Edn., Pustaka Pelajar, Yogyakarta, Indonesia.
- Ritzer, G., 2015. *Sociology Theory* (Translated by W.A. Djohar). PrenadaMedia Group, Jakarta, Indonesia.
- Sanderson, S.K., 2003. *Macro-Sociology* (Translated by F. Wajidi, and Menno). Raja Grafindo Persada PT, Depok, Indonesia.
- Sugiyono, 2016. *Qualitative-Quantitative Research Methods and R and D*. Alfabeta Publisher, Bandung, Indonesia.
- Sui, D.Z. and H. Zeng, 2001. Modeling the dynamics of landscape structure in Asia's emerging desakota regions: A case study in Shenzhen. *Landscape Urban Plann.*, 53: 37-52.
- Sukirno, S., 2007. *Economic Development*. 2nd Edn., Prenada Media Group, Jakarta, Indonesia.
- Sukirno, S., 2010. *Economic Development: Processes, Issues and Policy Bases*. Prenada Media Group, Jakarta, Indonesia.
- Sunariyah, 2003. *Introduction to Capital Market Knowledge*. UPP AMP YKPN Publisher, Yogyakarta, Indonesia.
- Surya, B., 2014b. Globalization, modernization, mastery of reproduction of space, spatial articulation and social change in developmental dynamics in Suburb Area of Makassar City (a study concerning on urban spatial sociology). *Asian Soc. Sci.*, 10: 261-268.
- Surya, B., 2014a. Social change, spatial articulation in the dynamics of boomtown construction and development (case satudy of Metro Tanjung Bunga Boomtown, Makassar). *Mod. Appl. Sci.*, 8: 238-245.
- Surya, B., 2015c. Rationalization of community actions, public spaces privatization and urban informal sector economic behavior (A case: Hertasning road corridor of Makassar city). *Middle-East J. Scient. Res.*, 23: 2219-2231.
- Surya, B., 2015b. Spatial articulation and Co-existence of mode of production in the dynamics of development at the urban fringe of Makassar City. *J. Eng. Appl. Sci.*, 10: 214-222.
- Surya, B., 2015a. The dynamics of spatial structure and spatial pattern changes at the fringe area of Makassar City. *Indonesian J. Geogr.*, 47: 11-19.
- Surya, B., 2016a. Change phenomena of spatial physical in the dynamics of development in urban fringe area. *Indonesian J. Geography*, 48: 118-134.
- Surya, B., 2016b. The processes analysis of urbanization, spatial articulation, social change and social capital difference in the dynamics of new town development in the fringe area of Makassar City (case study: In Metro Tanjung Bunga Area, Makassar City). *Proc.-Social Behav. Sci.*, 227: 216-231.
- Suyanto, B., 2014. *Economical Sociology, Capitalism and Consumption in Post-Modernism Society Era*. Prenada Media Group, Jakarta, Indonesia.
- Tarigan, R., 2014. [Regional Economics: Theory and Applications]. PT. Bumi Aksara, Publisher, Indonesia, (In Indonesian).
- Tasan-Kok, T., 2010. Entrepreneurial governance: Challenges of large-scale property-led urban regeneration projects. *Tijdschr. Voor Economische Soc. Geografie*, 101: 126-149.

- Todaro, M.P. and S.C. Smith, 2011. *Economic Development*. 11th Edn., Prentice Hall, New York, USA., ISBN-13: 978-1408284476, Pages: 801.
- Weber, M., 2007. *The Protestant Ethic and the Spirit of Capitalism* (Translated by Yusup Priyasudiarja). Jejak Publisher, Indonesia.
- Winarso, H., D. Hudalah and T. Firman, 2015. Peri-urban transformation in the Jakarta metropolitan area. *Habitat Intl.*, 49: 221-229.
- Yudono, A., 2013. *Issues, Principles and Ideas Setup of Makassar City*. Vol. 1, Badan Penerbit UNM Publisher, Makassar, Indonesia.
- Yunus, H.S., 2005. [City Management: Spatial Perspective]. Pustaka Pelajar, Yogyakarta, Indonesia, ISBN:9789793721873, Pages: 460 (In Indonesian).
- Yunus, S.H., 2006. *Megapolitan: Concepts, Problems and Prospects*. Pustaka Pelajar, Yogyakarta, Indonesia.
- Yunus, S.H., 2008. *The Dynamics of Suburban Region Determinants the Future of the City*. Pustaka Pelajar, Yogyakarta, Indonesia.