

Expectation Maximization Based Satellite Image Segmentation

L. Senthil Nathan

Department of Harbour and Ocean Engineering, University of AMET, Chennai, India

Abstract: In this study, an improved version of Expectation-Maximization (EM) algorithm is proposed efficiently to segment the satellite images. Segmentation of image is one of the promising and active researches in recent years. As literature prove that region segmentation will produce better results. Human visual perception is more efficient than any machine vision systems for extracting semantic information from an image. An EM algorithm is developed to estimate parameters of the prior probabilities and likelihood probabilities. So, EM algorithm is used for segmenting background and island extraction is done based on pixel intensity. Finally, Peak Signal to Noise Ratio (PSNR) is calculated and it has better results than other.

Key words: Satellite image segmentation, EM, PSNR, literature, extraction, pixel

INTRODUCTION

Satellite image segmentation using the interactive approach to multiobjective genetic fuzzy clustering is explained by Mukhopadhyay (2016). This algorithm concurrently finds the clustering solution as well as evolves the set of legal measures that are to be optimized at the same time. The human decision maker interacts with a method and best set is obtained using adaptive learning of validity measure with a final result. Moth-flame based optimization for satellite image segmentation with multilevel thresholding is presented by Muangkote *et al.* (2016). Multilevel thresholding moth-flame optimization algorithm for multilevel thresholding was developed. Most of the satellite images are tested using this method. There are five existing methods are compared here for solving thresholding problems like differential evolution algorithm, genetic algorithm, particle swarm optimization, artificial bee colony algorithm and moth-flame optimization algorithm. Satellite image segmentation using different techniques is discussed by Deepika and Vishnu (2015). Thresholding technique, active contours and k-means clustering are the three techniques used for segmenting a satellite image and estimated the best method when compared to another method.

Comparative study about satellite image segmentation using clustering algorithms based on a performance of fuzzy is described by Ganesan *et al.* (2015). Clustering approaches based on possibilistic C means, possibilistic fuzzy C-means and fuzzy-C-means is compared and these algorithms were tested with performance with more number of satellites. Comparative study about satellite image segmentation using the genetic algorithm based on different objective functions is presented by Pare *et al.* (2015). The different objective

function is employed for image segmentation using the genetic algorithm. Tsallis, Otsu and Kapur's are the three objective functions compared based on genetic algorithm for optimal multilevel thresholding. Satellite and medical image segmentation based on multiple kernel fuzzy C-means algorithm with ALS method are explained by Yugander *et al.* (2012). In this research study discussed the land use and land cover classification of LISS-III satellite image using KNN and decision tree (Upadhyay *et al.*, 2016a, b). Image super-resolution using wavelet transformation based genetic algorithm is presented in this study (Panda and Jena, 2016). Initial contour curve is generated using multiple kernel fuzzy C-means during the curve propagation while leaking at the boundary and the combine technique for classification of IRS P6 LISS-III satellite images (Upadhyay *et al.*, 2016a, b). Finally, different information's are combined using multiple kernel fuzzy C-means in segmentation algorithm and the image super-resolution reconstruction using iterative adaptive regularization method and genetic algorithm (Panda *et al.*, 2015).

MATERIALS AND METHODS

In this proposed system, satellite images are segmented using EM algorithm. Before segmentation preprocessing is done using the median filter to denoise a picture to get better results. Here, first, the images are segmented using this algorithm. EM parameters are used to determine the latent variable distribution. Block diagram of the proposed image segmentation is given below.

Expectation maximization: EM algorithm is an iterative method to find maximum likelihood or maximum a posteriori estimates of parameters in statistical models.

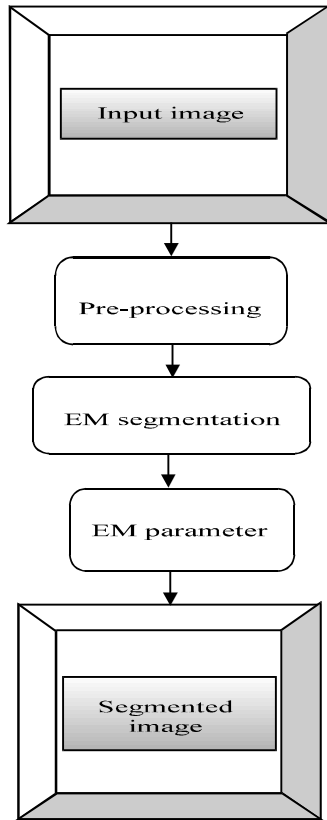


Fig. 1: Block diagram of the proposed satellite image segmentation

Expectation step is performing by EM iteration alternatively and it creates a function using current view of the log-likelihood for the maximization step and parameters. Finally, latent variable distribution is determined by these estimated parameters in the next expectation step.

The EM iteration alternates between performing an Expectation (E) step which creates a function for the expectation of the log-likelihood evaluated using the current estimate of the parameters and Maximization (M) step which computes parameters maximizing the expected log-likelihood found on the E step. These parameter-estimates are then used to determine the distribution of the latent variables in the next E step (Fig. 1).

RESULTS AND DISCUSSION

This step describes the overall performance of the proposed system. Images will suffer from the noise. The median filter is proposed in this study to denoise the picture. This study tells about proposed segmenting

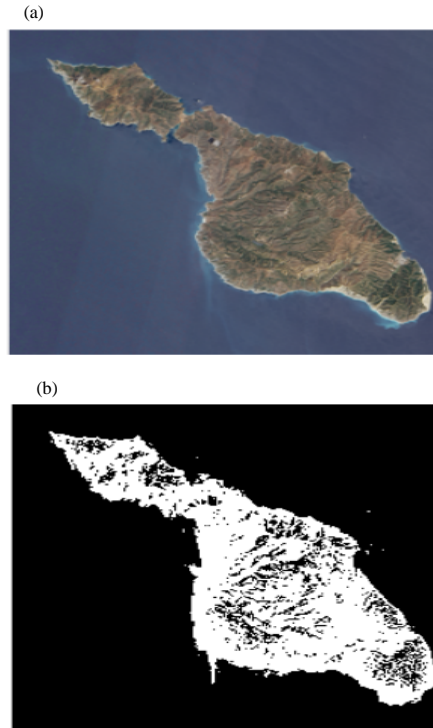


Fig. 2: a) Original image and b) Segmented image using EM algorithm

scheme using EM is oppressed for satellite images. The performance of the proposed scheme is computed by PSNR value. Figure 2a, b shows the proposed, original image, segmented image.

CONCLUSION

A novel approach to segment the satellite images were developed using EM is proposed. From the investigational results, the image segmentation using the proposed method was found to be more visually tempting than other existing algorithms. Figure 2 shows the proposed segmented image using EM algorithm technique. The results indicate that EM algorithm method is a very efficient optimization and obtained PSNR value is 38.65. Future scope of this study is to use the advanced segmentation technique to get more accurate result.

REFERENCES

- Deepika, N.P. and K. Vishnu, 2015. Different techniques for satellite image segmentation. Proceedings of the 2015 Online International Conference on Green Engineering and Technologies (IC-GET), November 27, 2015, IEEE, Coimbatore, India, pp: 1-6.

- Ganesan, P., K. Palanivel, B.S. Sathish, V. Kalist and K.B. Shaik, 2015. Performance of fuzzy based clustering algorithms for the segmentation of satellite images: A comparative study. Proceedings of the 2015 IEEE 7th National Conference on Computing Communication and Information Systems (NCCCIS), February 13-14, 2015, IEEE, Coimbatore, India, ISBN:978-1-4799-8991-1, pp: 23-27.
- Muangkote, N., K. Sunat and S. Chiewchanwattana, 2016. Multilevel thresholding for satellite image segmentation with moth-flame based optimization. Proceedings of the 13th International Joint Conference on Computer Science and Software Engineering (JCSSE), July 13-15, 2016, IEEE, Khon Kaen, Thailand, ISBN:978-1-5090-2034-8, pp: 1-6.
- Mukhopadhyay, A., 2016. Interactive approach to multiobjective genetic fuzzy clustering for satellite image segmentation. Proceedings of the 2016 IEEE Uttar Pradesh Section International Conference on Electrical Computer and Electronics Engineering (UPCON), December 9-11, 2016, IEEE, Varanasi, India, ISBN:978-1-5090-5385-8, pp: 630-634.
- Panda, S.S. and G. Jena, 2016. Image super resolution using wavelet transformation based genetic algorithm. Proceedings of the 2015 International Conference on Computational Intelligence in Data Mining (CIDM) Vol. 2, December 5-6, 2015, Springer, New Delhi, India, pp: 355-361.
- Panda, S.S., G. Jena and S.K. Sahu, 2015. Image super resolution reconstruction using iterative adaptive regularization method and genetic algorithm. Proceedings of the International Conference on Computational Intelligence in Data Mining (CIDM) Vol. 2, December 20-21, 2014, Springer, New Delhi, pp: 675-681.
- Pare, S., A.K. Bhandari, A. Kumar, G.K. Singh and S. Khare, 2015. Satellite image segmentation based on different objective functions using genetic algorithm: A comparative study. Proceedings of the 2015 IEEE International Conference on Digital Signal Processing (DSP), July 21-24, 2015, IEEE, Singapore, ISBN:978-1-4799-8059-8, pp: 730-734.
- Upadhyay, A., A. Shetty, S.K. Singh and Z. Siddiqui, 2016a. Land use and land cover classification of LISS-III satellite image using KNN and decision tree. Proceedings of the 3rd IEEE International Conference on Computing for Sustainable Global Development (INDIACom), March 16-18, 2016, IEEE, New Delhi, India, ISBN:978-1-4673-9417-8, pp: 1277-1280.
- Upadhyay, A., S.K. Singh and S. Kambli, 2016b. Combine technique for classification of IRS P6 LISS-III satellite images. Intl. J. Control Theor. Appl., 9: 4293-4299.
- Yugander, P., B.J. Sheshagiri, K. Sunanda and E. Susmitha, 2012. Multiple kernel fuzzy C-means algorithm with ALS method for satellite and medical image segmentation. Proceedings of the 2012 International Conference on Devices Circuits and Systems (ICDCS), March 15-16, 2012, IEEE, Coimbatore, India, pp: 244-248.