

## **The Public Hearing of the Community Around Mahasarakham University about the Economic, Social, Health and Environmental Impacts**

<sup>1</sup>Prayoon Wongchantra, <sup>2</sup>Kuantean Wongchantra, <sup>1</sup>Kannika Sookngam, <sup>1</sup>Suparat Ongon,  
<sup>1</sup>Likhit Junkaew, <sup>1</sup>Surasak Kaeongam and <sup>1</sup>Uraiwan Praimee  
<sup>1</sup>Center of Environmental Education Research and Training,  
Faculty of Environment and Resource Studies, Mahasarakham University,  
Maha Sarakham, Thailand  
<sup>2</sup>Srimahasarakham Nursing College, Maha Sarakham, Thailand

**Abstract:** Mahasarakham University located in Kham Riang Sub-district, Maha Sarakham Province. A survey of public hearing in nearby communities in a radius of 2 km. There are 4 communities in Ban Don Viang Chan, Ban Kham Riang, Ban Tha Khon Yang and Ban Donna. There are 5,743 households. The purpose of this study were to study the opinions of the communities surrounding Mahasarakham University on the environmental impact. There are 4 aspects of study: economic, social, health and environment. The result showed that: the economy found that after the establishment of Mahasarakham University neighborhood dwellers have income from doing business. The people in the surrounding area have jobs and economic expansion of the community. Social found that the people in the surrounding area has changed positively are the values, social networks, the employment of local people by providing opportunities for people to worked in the university and reduced family issues leading to social problems, drug problem, garbage problem and transportation problem. The health found that the both positive and negative impacts. The positive impacts were that people living in the surrounding area have a better living and better quality of life. The negative impact on the community were air pollution, noise pollution the result of the traffic. Environment found that the both managed and unmanaged. The environment managed such as tap water used for consumer and consume, energy consumption and the environmental issues that unmanaged, such as communication problems and noise.

**Key words:** Public hearing, economic, social, health and environmental impact, community, energy consumption

### **INTRODUCTION**

Mahasarakham University, the origin of the Mahasarakham College of Education founded on March 27, 1968. The aim was to expand higher education to the region. Later was raised to become Srinakharinwirot University, Mahasarakham campus. The year in 1974 and separated as independent under the name “Mahasarakham University” on December 9, 1994 his Majesty King Bhumibol Adulyadej signed the statute of the university. It was published in Government Gazette Vol. 54, Part 111. It is the 22nd State University of Thailand located at 269 Nakhon Sawan Road, Muang Sub-district, Muang District, Maha Sarakham Province on the area of 197 rai. And later in 1995, Mahasarakham University has expanded its administration to support teaching, research and administration in various fields. And later in the year 1996 Mahasarakham University has expanded its administration to support teaching, research

and administration, the management center has been relocated to Kham Riang sub-district, Kantharawichai district, Maha Sarakham Province the area is about 1,300 rai. (Division of Academic Affairs Mahasarakham University in 2017) and has taken the building in 1996. In the academic year 1999, several new curricula and courses were offered. Educational services to a much wider variety.

Regulations of the office of the prime minister on public hearing 2005 as it is deemed appropriate establish criteria and methods for public hearings to benefit state agencies and the public. This is a guideline for people to participate in the implementation of state-wide projects. (The Office of the Prime Minister, 2017: Online) Public participation is an important part of the success of development. Whether it is economic development, social and cultural development or political and other developments. Both in the national, local and community level. Participation there is a process by which people

express their ideas exchange information and opinions to find the right choices and decisions that are appropriate and acceptable. All parties involved should participate in this process from the beginning until the monitoring and evaluation. To achieve understanding and awareness-learn together which will be beneficial to all parties. Public participation the level of participation can be divided into 5 levels: participation in the informational level, the consultation level, the involve level, the collaboration level and the empowering citizens (Kokpol, 2006).

In this study, the researchers realized the importance of listening to the opinions of the university community. Due to construction near the university community which covers of 4 communities including: Ban Tha Khon Yang, Ban Donna, Ban Kham Riang and Ban Don Wiang Chan. The total number of households was 5,743 in a radius of 2 km from the community. By listening to the opinions of the university community about the impact of economic, social, health and the environment. The purpose of this study was to study the opinions of communities around Mahasarakham University on environmental impacts. The study was conducted in four areas: economic, social, environmental health.

**Objectives:** To study public hearing of the communities around Mahasarakham University about the economic, social, health and environmental impacts.

## MATERIALS AND METHODS

**Research area:** Kantharawichai District, Mahasarakham Province consists 2 sub-district including: Tha Khon Yang and Kham Riang sub-district. 4 villages including: Ban Tha Khon Yang, Ban Donna, Ban Kham Riang and Ban Don Wiang Chan. This is an area within a radius of 2 km around the university.

**Population and sample:** The population in this study is villagers in Tha Khon Yang and Kham Riang sub-district and consisted of 4 communities, Ban Tha Khon Yang, Ban Donna, Ban Kham Riang and Ban Don Wiang Chan a total of 384 households.

The samples used in this study were villagers living in Tha Khon Yang and Kham Riang sub-district of 384 households were estimated to have a census of  $\pm 10\%$ .

**Duration of study; January 2018 to May 2018:** The instrument used for data collection:

- Tools used to convey; Information for public radio
- Brochure; The instruments used to collect data

The public opinion survey tool was a public opinion questionnaire for Mahasarakham University. It is divided into 4 aspects: conomic, social, health, environmental.

**Data collection:** Data collection design were divided into 2 phases: phase 1: publicity to educate the public on the Mahasarakham University and phase 2: collects data, as follows;

**Phase 1:** Educating the community around Mahasarakham University to listen to the opinions about the environmental impact. This is an area within a radius of 2 km around the university. Figure 1 and provide information about the project using public relations.

**Phase 2; Collects data:** Study related research papers to provide information on the preparation of the questionnaire and to create a questionnaire for the community of Mahasarakham University regarding the environmental impact.

The initial inquiry area about the community context in the communities in Tha Khon Yang and Kham Riang sub-district: Ban Tha Khon Yang, Ban Donna, Ban Kham Riang and Ban Don Wiang Chan.

Ask the community of Mahasarakham University about the environmental impact in Ban Tha Khon Yang and Kham Riang sub-district, total of 4 communities, 384 households. The data obtained from the public opinion survey was analyzed.

## RESULTS AND DISCUSSION

The results of the community survey were affected by the operation Mahasarakrm University. The results of the public hearing around the Mahasarakham University regarding the economic, social, health and environmental impact were as follows; 384 respondents were affected by the environmental impact of which 174 were male, 45.30% female, 210 households, accounted for 54.70%. The survey was divided into 4 aspects.

The economic survey of communities living around the university found that communities with jobs and revenues of 237 households as a 61.70% and company stores improved 151 households as a 39.30% (Fig. 1). The impact can be summarized into 2 aspects include:

**Positive impacts:** Most of the community has income from the operation of shops such as dormitories, restaurants, miscellaneous shops, hiring on campus. Various aspects of the business, resulting in investors poured into the area, resulting in higher prices for land and real estate. Transportation and public utilities are developed in

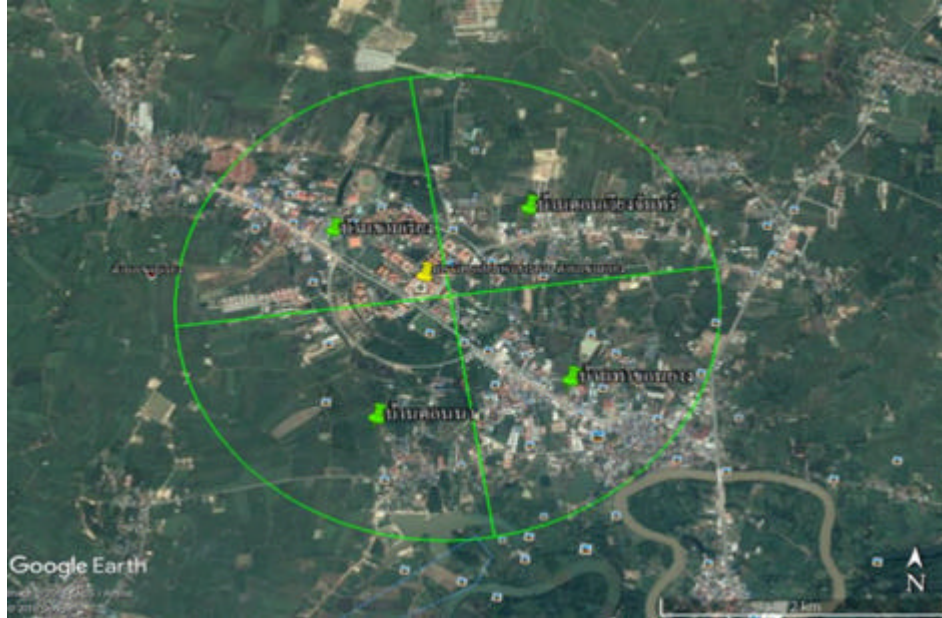


Fig. 1: The study area within a radius of 2 km from the university



Fig. 2: a-c) Maharakham University area

accordance with the university's development. The development of educational systems and social systems is a social and educational society as a result, the development of the economy of the whole community in a better way.

**Negative impacts:** The development of the economic system is improving. However, it may affect the investors who have a low budget. For example, the small and large convenience store business happens a lot and continuously. The impact on the retail business is sluggish, the most of consumers value their purchases with larger businesses as a result, competition in the economy.

The social surveys of communities living around the Maharakham University area the community has been the development of 238 households as a 62.20%, community crowded 232 households representing 60.40.

The problem of theft 233 households was 60.70% and the scrapping of 117 households as a 30.47% (Fig. 2 and 3) a summary of the impact into 2 aspects include. Positive impacts: the area around Maharakham University is a rustic rural community has developed along with Maharakham University. The social system was developed into a social system. The community has a better economy as a society of education. The most people access education, basic utilities and advanced technology, social system of education to the community around the campus (Fig. 4 and 5).

**Negative impacts:** Due to the presence of migrant workers in the area, this causes problems and impact on communities around the community and university. This is caused by personal behavior, such as drug or alcohol addiction. Interpersonal conflict the extent of the problem may escalate but the most of the problems are

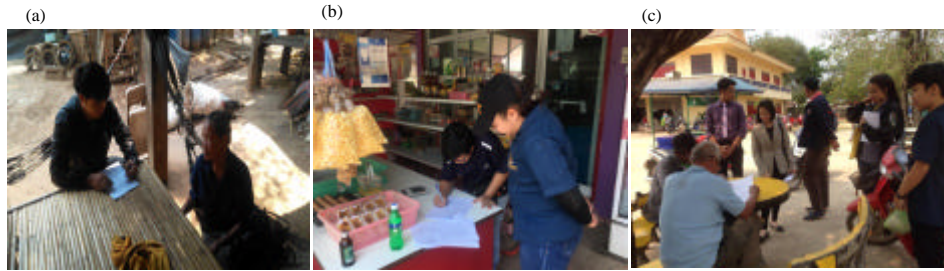


Fig. 3: a-c) A survey of public opinion in the community

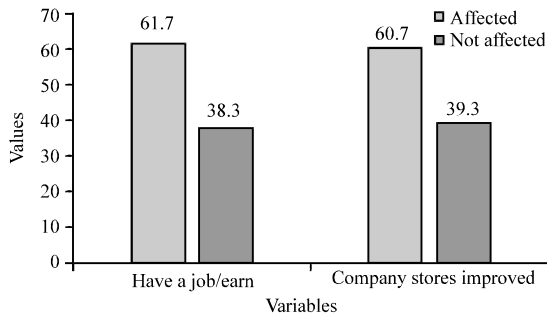


Fig. 4: Impact on the economy (Results of the survey on the economy)

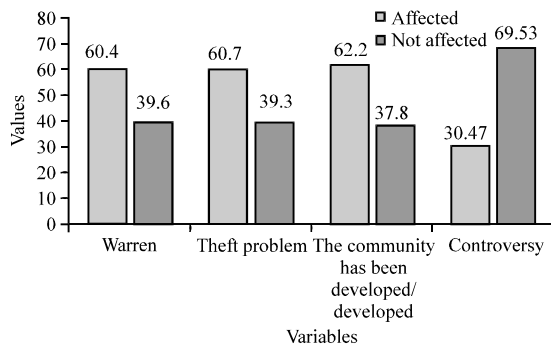


Fig. 5: Results of the social impact survey

temporary. However, measures can be taken to prevent such effects. It is estimated that it will not cause a wide impact.

The health survey of communities living around the university found that, most communities are not affected by epidemics number 283 households accounted for 73.95%. The occurrence of air pollutants number 308 accounted for 80.46%. The occurrence of accidents number 286 households as a percentage, 74.48%. Pollution of water number 264 households 68.75%. The impact can be summarized into 2 aspects include (Fig. 6).

**Positive impact:** The area around Mahasarakham University is a rustic rural community developed with

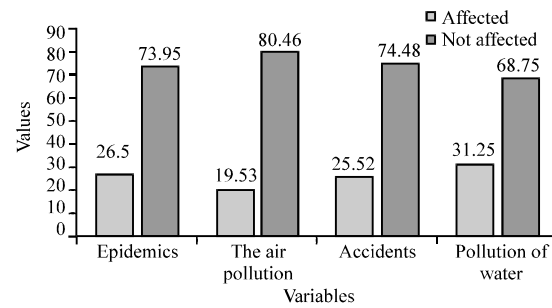


Fig. 6: Results of the poll, the health consequences

Mahasarakham University. The social system was developed into a social system. The community has a better economy as a society of education. The most people access education, basic utilities and advanced technology, social system of education to the community around the campus.

**Negative impacts:** Also found that dust problems from the road extension. Construction to get the attributes the health of the people in the community such as eye irritation or respiratory pathogenesis, etc. Waste problem is smelly and germs. May cause the following diseases and the problem of wastewater caused by student dormitories. Waste water or wastewater is discharged into community areas some communities have wastewater. And smelly in the vicinity which causes illness.

The environmental survey of communities living around the university found that land use in 253 households accounted for 66.1%. Transportation problems were 227 households, 59.2%. Water problems and flood drainage were 276 households, accounting for 72.1 and 66.9%. The problems of solid waste management were 256 households, accounting for 66.9%. The problem of air quality was 232 households, accounting for 60.50%. Noise pollution 240 people, 62.50% which can be summarized into 2 aspects (Fig. 7):

**Positive impact:** The community has been positively impacted by the environmental development of parallel

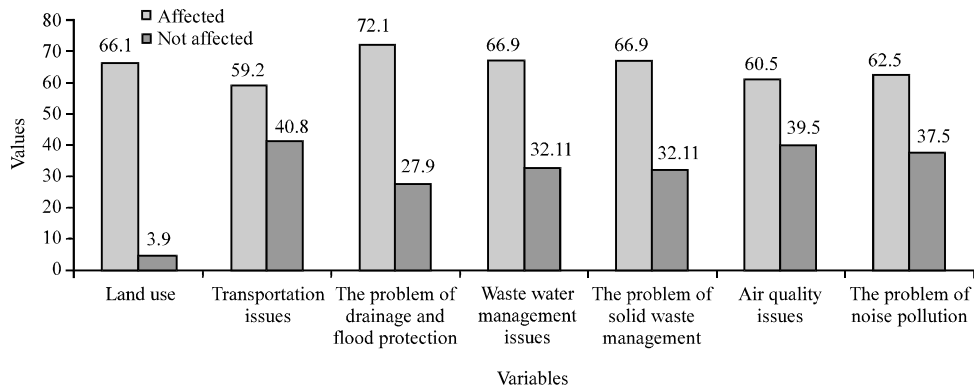


Fig. 7: Environmental impact assesment survey

universities because the area has a more latent population. The most of the community is the residence of students and villagers. The development of community infrastructure system in wastewater management services. Solid waste management systems, public utility system, the communication and the scenery make the infrastructure, there is a possibility of the system and community access to local government services appropriately.

**Negative impact:** Also found that there is a problem of noise in the residential area, traffic jam problem garbage/waste water from garbage trucks, damaged roads and the emergence of more and more solid waste by population. Dust caused by roaming the vehicle and waste of resources from the expansion of urban areas.

Participation of communities living around Mahasarakham University. The results of the survey of people living near Mahasarakham University who were involved in receiving information about Mahasarakham University.

The public relations information provided by the university to the community around the university was found that the majority of the 272 households agreed that 70.80% and agreed. About 96 households, 25.00% and 16 households did not agree. The 4.20% of the community agreed. The partners are important to the community.

The community involvement with Mahasarakham University was not clear. There were 129 households, 33.6%, 91 households or 23.7%. Of course, 81 households accounted for 21.1%. It is not likely that 34 households will be accounted for 8.9%.

Monitoring of the implementation of Mahasarakham University found that 151 communities needed households, 39.30% were unsure, 149 households accounted for 38.80% and unnecessary 74 households, representing 21.90%.

Being part of the community in the monitoring of Mahasarakham University, it was found that 78 out of 78 households or 20.9% The results of community survey were affected by the operation of Mahasarakham University, divided into 4 sides.

Economic based on a survey of community members living around Mahasarakham University, the community was positively affected. The most of the community has income from shops, employment, business activities. Transportation and public utilities are at a better level. Negative impact the development of the economic system is improving. It may affect investors with low capital for example, the convenience store business is small and large, pop up a lot and continuous. The impact on the retail business is sluggish. The majority of consumers value their purchases with larger businesses. As a result, competition in the economy. Which is based on the concept for Lasuwong (2014) said that comments are expressions of inner feelings in which the inner feelings may be intentional. Or belief and values are internal behaviors that no one knows except their own. But opinions are external behaviors that others know very clearly. Which is based on the concept for Wongprayoon (1983) said that meaning of economic growth is that "Economic, learn about the needs of the human is not limited but there are the guidelines that will be a limited range includes the assembly for the quest for revenue to earn the property of production, distribution as well as to consume what consumer goods"; This is consistent with the concept of Sukcharoen found that the impacts on socio-economic changes on rural families: case study Khamcharoen, Muang District, Maha Sarakham Province. The results show that family characteristics and roles of family members have changed from family to single family. It also has a strong relationship. Both parents work outside the home but also have a primary role in parenting. Relatives have a good relationship in

blood. Family institutions play a role in co-operating in community activities and socio-economic changes. Career to replace the agricultural profession. It is a major occupation in the community. There is a change in patterns in family relationships, family lifestyle changes. Being together on holiday or on a Saturday is a requirement for family members to have a good relationship with family members and a happy family lifestyle. After the establishment of Mahasarakham University. The communities living around the campus are improving on economic growth.

Social based on a survey of community members living around Mahasarakham University found that positive impacts the area around Mahasarakham University is a rustic rural community. Developed with Mahasarakham University. The social system was developed into a social system. The community has a better economy as a society of education. The most people access education basic utilities and advanced technology, social system of education to the community around the campus and negative impacts due to the presence of migrant workers in the area, this causes problems and impact on communities around the community and university. This is caused by personal behavior such as drug or alcohol addiction. Interpersonal conflict the extent of the problem may escalate. But most of the problems are temporary. However, measures can be taken to prevent such effects. It is estimated that it will not cause a wide impact. Which is based on the concept of Samakhkar (1995) said that social change has the effect of making a difference in a society over a certain period of time. The change whether small or large can be regarded as a social change. Which is based on the concept for Panyasing (2017) had explain that "community" is the exact geographical boundary. They have a relationship and a related cultural structure and dependence. These relationships and structures have evolved from adaptive processes to the environmental situation of the community, so, they are considered territorial because of their dependence and cohesion within the group. Due to people in the group realize the unity and ability of the community to control the social and cultural processes. Which occurs in the territorial boundaries. This is consistent with the research for Khumpeera (2003) found that economic and socio-cultural change and adaptive process a case study of Kaenghal Village Nongbua Subdistrict Phurua District Loei Province, Master of Arts, Social Development, Loei Rajabhat University. The study indicated that the villagers also earn good social and cultural. The relationship between members in the community decreased. Hiring workers to replace labor aid dependence diminishes. Education has received more

attention and culture has taken the city into the village. The factors influencing the change of the village are the factors of public utilities. Factors of cultural spread mass communication factor public and private factors is a factor outside the community. The internal factor is personality factor. The impact of change is both positive and negative. The positive impact is to create a new career, increase income and indirect reduce unemployment work together. The importance of education and culture in the new work that the villagers are enthusiastic in work. The negative part is expenses include both capital expenditure and capital expenditure increased debt time for family fell some traditions have been diminished and the extravagance of spending has gone down. After the establishment of Mahasarakham University, The community living around the campus has improved from the economic growth that has made the surrounding campus a better place.

Side health a survey of the community living in the vicinity of Mahasarakham University found a positive effect. The development has enabled the community to access better basic infrastructure, more hygienic health care and more clinics. Emergency services the university also provides services to the community health care system through various projects. As a result, the community is happier. Negative impact dust problems have also been found in road construction which results in poor health in the community such as eye irritation or cause respiratory diseases and so on. The problem of solid waste which is making strong smells and germs. It can cause various diseases as well as the problem of waste water caused by student dormitories. The discharge of sewage or waste water into the local community. In some communities, there is waste water and smelly in the vicinity. And which is based on the concept of said that physical health means the body is completely strong, fluent. The economy or the necessary factors, no accident, danger and the environment that the health supplements, mental health is a happy, merry, mindful, meditated, intelligent as well as reducing selfishness. Selfishness is not a perfect happiness, a social condition in which to live together a good service system. And which is based on the concept of Pender (1987) mentioned the meaning of the word health 3 is: health is normal, balance and stability of the body. Health is the success of the development of health from the movie to the next level of the movie and the meaning. The two aspects above are that health is the balance of the body and it is the development of health from one level to another. This is consistent with the research Sunthornsutthawat (2007) studied model of people health system management by cooperation of tamnaktham community, Nongmoungkhai,

Phrae. The research found that the condition and potential of the community that contribute to the management of the public health system. With the settlement of about 127 years, people live together in peace, art, culture, belief and social network relationships, which have an impact on health care, a way of life in the traditional Lanna. Public health and this is consistent with the research Suterakien and Chanachu (2016) studied comments and compliance as perceived by professional nurses. Cha-am Hospital Nakhon Sri Thammarat the research found that the demographic characteristics of the morgue hospital of Cha-am Hospital were at a high level when analyzing each item, the average score was 3 items in terms of honesty. There were the highest average rating the kindness and economical for the implementation of the moral identity. The survey of the community around the community campus is not affected by Mahasarakham University. It has been developed to give the community access to basic infrastructure. Consumers are more hygienic.

The environmental survey of communities living around the University found that positive impact the community has been positively impacted by the environmental development of parallel universities. Because the area has a more latent population. The most of the community is the residence of students and villagers. The development of community infrastructure system in wastewater management services. Solid waste management systems, public utility system, the communication and the scenery make the infrastructure, there is a possibility of the system and community access to local government services appropriately. And negative impact also found that there is a problem of noise in the residential area traffic jam problem garbage/waste water from garbage trucks, damaged roads and the emergence of 9 more and more solid waste by population. Dust caused by roaming the vehicle and from waste of resources which is based on the concept of (Wongchantra, 2011) said the environment is everything around the human being, life and no life. Including the concrete. Visible and visible, the concept of life is influenced by each other as a factor in supporting each other. The impact of one factor is inevitable. The environment is a cycle and cycles related to the whole system and which is based on the concept of and according to the concept of Chankaew (1997) said the environment is all around us but "ourselves" does not mean human beings. In fact we are all things that we want to study. There is no doubt that what surrounds us is the radius of goodness which can explain that the things that are around us are not limited, they may be near or far. How does it affect us it depends on the nature

and behavior of it. This is consistent with the research. Wongchantra *et al.* (2017) found that initial environmental examination study report: project of effective waste management with production as renewable energy of the Mahaarakham provincial administrative and found that physical environmental impact: surface water had a BOD value that exceeds the established standards, groundwater values were standard. effects on the biological environment, including the forest and wildlife effect was low effect on the value of human use, including land use was in low level in residential areas in the industrial areas. And the use of the area livestock did not have any effect on the project area impact on economy and society. Project of solid waste management effectively with the production of renewable energy changing from the area of no use was the value added of land use by the impact on the well-being of society or community was very low. The employment of the people in the community and surrounding area led to generate income, flow of money in the economy, help the economy and the income of the community better, quality of life and well-being of helping people in the community better as well as improves the utilities of the community. It is good for the economy and the society of overall space. It also includes measures to prevent, correct and reduce environmental impacts. The project can be implemented with minimal environmental impact and the planning of public participation to implement environmental impact assessment and environmental measures to cover more. The study indicated that a survey of the community around campus. After the establishment of Mahasarakham University. Communities affected positively by the university community in the development of community infrastructure and service management environment for the better but still can not fix it all.

The participation of the communities living around the university area found that the most agree with the public relations information provided around Mahasarakham University which is important to the community. Most of the community can join with Mahasarakham University. The most communities need to be involved in monitoring the operation of Mahasarakham University and most communities are not sure to be part of monitoring Mahasarakham University. Public information is provided around the Mahasarakham campus which is important to the community. The most of the community can join with Mahasarakham University. The most communities need to be involved in monitoring the operation of Mahasarakham University and most communities are not sure to be part of monitoring Mahasarakham University. It is based on the concept of



Wasilaphon (1968) said participation in management means that involvement of the person engages in and engages in the engagement. Divisions and missions are self-contained. That is based on the concept of Wesarach (1995) said public participation is a process. The people involved in the various stages of the activities of the community with the objective of rural development. In this involvement of the participants, efforts and sacrifices of some resources such as material, body and time and that is based on the concept of Ounoak (1995) said that the meaning of participation is "participation" as a result of agreeing on the need for direction of change and the need for it, there must be enough of an initiative for action, i.e., to agree. Most of the people who will join it. The basic reason that people come to me. It should be realized that the practice or all actions done by or on behalf of that group are made through the organization. Therefore, the organization must be the conductor of the desired change. this is consistent with the research Theppha (2017) studied resolution guidelines for listening to public opinions through public hearings on the Regulation of Prime Minister's Office with The Idea Of Public Hearings, 2005. The results of the study revealed that the problem of public hearing by public hearing can suggest a solution. The law of public hearing is enforced in the form of the "Public Hearing Act" should establish a public hearing committee that comes from qualified individuals. And how much of it depends on the nature or type of the public hearing. The relevant ministers are appointing authority. Should amend the regulations of the Office of the Prime Minister on the public hearing of the public. 2005. In Article 4 by adding definition. "State projects that have a serious impact on the public" and the state must provide accurate and real information in all respects. In order for the public to disclose such information, the state must provide public relations, public hearings and public hearings. And which is based on the concept of Sirimedho (2012) studied Participation of people in community development of sufficiency economy village Ban Khlong Mai community, Sampran District, Nakhonpathom Province. The results of the study studied the public participation in the development of sufficiency economy village of Ban Klong Mai, Sam Phran District, Nakhon Pathom Province.

### **CONCLUSION**

The study indicated that group activities include community networks and good public participation. The development of the community in the areas of human development, area development of income sources and the community development plan benefits to the

community, the people in the community by the participation of people in various fields. The factors contributing to the development of the community is the concrete and relevant issues. Or problems of the community obviously.

### **ACKNOWLEDGEMENTS**

This research has been successfully completed. Because of the cooperation of Ban Don Wiang Chan Community Ban Tha Khon Yang Community and the Donna Community and thanks to Center of Environmental Education Research and Training, Faculty of Environment and Resource Studies, Mahasarakham University, Mahasarakham, Thailand. The research was supported all along.

### **REFERENCES**

- Chankaew, K., 1997. Interdisciplinary graduate program. Master Thesis, Kasetsart University, Bangkok, Thailand.
- Khumpeera, T., 2003. Economic and socio-cultural change and adaptive process a case study of Kaenghal Village Nongbua Subdistrict Phurua District Loei Province. Master Thesis, Loei Rajabhat University, Mueang, Thailand.
- Kokpol, O., 2006. The public participation manual. The Office of the Secretary-General of the Cabinet, Bangkok.
- Lasuwong, K., 2014. Educational Psychology. 4th Edn., Srinakarinwirot University, Bangkok, Thailand.
- Ounoak, O., 1995. Participation of village committees, womens activities in local development administration, Amnat Charoen. Master Thesis, National Institute of Development Administration-NIDA Business School, Bangkok, Thailand.
- Panyasing, S., 2017. Community development: Concepts and theories. Bangkok J. Hum. Soc. Sci., 43: 154-167.
- Pender, N.J., 1987. Health Promotion in Nursing Practice. 2nd Edn., Appleton & Lange, USA.,.
- Samakhkar, S., 1995. The Study of Human Society Towards the Social Sciences. 3rd Edn., Thammasat University, Bangkok, Thailand.
- Sirimedho, P., 2012. Participation of people in community development of sufficiency economy village Ban Khlong Mai community, Sampran District, Nakhonpathom Province. Master Thesis, Graduate School, Mahachulalongkomrajavidyalaya University, Bangkok, Thailand.



- Sunthornsutthawat, M., 2007. Model of people health system management by cooperation of tamnaktham community, Nongmoungkhai, Phrae. Master Thesis, Uttaradit Rajabhat University, Uttaradit, Thailand.
- Suterakien, S. and P. Chanachu, 2016. Comments and compliance as perceived by professional nurses. *South. Pub. Health J.*, 31: 55-62.
- Theppha, S., 2017. Resolution guidelines for listening to public opinions through public hearings on the regulation of prime ministers office with the idea of public hearings B.E 2005. *Acad. J. Phranakhon Rajabhat Univ.*, 8: 1-14.
- Wasilaphon, S., 1968. Problems and Trends in Peoples Participation in Educational Administration. Sukhothai Thammathirat Open University, Pak Kret, Thailand.
- Wesarach, P., 1995. Research report on public participation in rural development. Master Thesis, Institute of Thai Studies, Thammasat University, Tha Phra Chan Campus, Bangkok, Thailand.
- Wongchantra, P., 2011. Environmental Science. Maha Sarakham Printing House, Maha Sarakham University, Talat, Thailand.
- Wongchantra, P., K. Wongchantra, S. Ongon, L. Junkaew and K. Sookngam *et al.*, 2017. Initial environmental examination study report: Project of effective waste management with production as renewable energy of the Mahasarakham Provincial Administrative Organization. *Intl. J. Agric. Technol.*, 13: 1805-1820.
- Wongprayoon, T., 1983. Basic Economics. Wattana Panich Publishing, Bangkok, Thailand.