



International Journal of
Virology

ISSN 1816-4900



Academic
Journals Inc.

www.academicjournals.com

Preparation and Evaluation of Lumpy Skin Disease Hyperimmune Serum Coniugated with Fluorescein

¹A. Razek, ¹B. Omar and ²Magda M. Sayed

¹Veterinary Serum and Vaccine Research Institute, Abbasia, Cairo, Egypt

²Central Laboratory for Evaluation of Veterinary Biologics, Abbasia, Cairo, Egypt

Abstract: Hyperimmune serum against Lumpy Skin Disease Virus (LSDV) was prepared by inoculation of the virus in successive doses into susceptible two calves with complete and incomplete Freund's adjuvant. Identity tests were applied by Agar Gel Precipitation Test (AGPT) and Indirect Fluorescent Antibody Technique (IFAT). Serum Neutralization Test (SNT) and ELISA tests were applied for titration and evaluation of the hyperimmune sera before conjugation with fluorescent. Total protein concentration of the prepared LSDV antisera was 0.8 g dL⁻¹. Separation of anti-LSDV immunoglobulins IgG were done using ammonium sulphate followed by conjugation with fluorescein isothiocyanate at pH 9.6. The anti-LSDV IgG conjugated fluorescein sterile and was used to detect LSDV in the MDBK cells and gave good results to dilution 1/20 ,while the reference conjugate to 1/30.

Key words: Disease, hyperimmune, flourescein, skin

INTRODUCTION

Lumpy skin disease is an infectious eruptive viral skin disease affecting cattle and caused by a Neethling strain of Capripox virus which is antigenically related to African sheep and goat pox viruses (Methews, 1982; Abd El-Razek, 2003). Fluorescent Antibody Test (FAT) was most widely employed in LSD and Sheep-Goat Pox (SGP) diagnosis (Davies and Otema, 1978; Office International Epizootic, 1989, 1992). The isolation of LSDV from cattle in Egypt was confirmed by FAT by using anti-Capripox virus hyperimmune sera conjugated with FITC (House *et al.*, 1990), which mentioned that FAT was rapid, accurate and sensitive serological technique for the diagnosis of pox viral diseases by detection of the intracellular viral antigen, in addition, FAT was used for rapid detection of the viral antigen in infected tissue culture.

The aim of this study was to prepare local, specific and economic conjugated antisera with FITC against LSDV for rapid diagnosis of this virus to safe time and cost.

MATERIALS AND METHODS

Animals

Two calves of about 1 year old were used for the preparation of LSDV hyperimmune serum. They were screened and proved that they are free from antibodies against LSDV.

Five adult Albino Swiss mice were used for the preparation of liver powder according to Narin and Marrack (1964). The liver powder was used to remove the non-specific fluorescence from the prepared conjugate.

Virus

Lumpy skin disease virus (Ismailia strain) screened MDBK, was kindly supplied from FADDL through Dr. J. House, the virus isolated during outbreak of cattle in 1989, at Ismailia governorate, Egypt.

It was propagated on lamb testicle cells, then propagated on MDBK cells for 60 passages (Aboul Saoud, 1996). The virus has a titre of 6×10^8 TCID₅₀/mL.

Fluorescein Isothiocyanate

It was obtained from Sigma, USA.

Dialysis Bag

It was obtained from Sigma, USA.

Ammonium Sulphate

It was obtained from Sigma, USA.

Conjugates

Fluorescein-Labeled Affinity Purified Antibody to Bovine LgG (H+L)

It was kindly supplied from FADDL through Dr. J. House. It was used as a reference positive control conjugate to evaluate the locally prepared one.

Anti-Bovine IgG (Whole Molecule) Peroxidase Conjugate

It was obtained from ICN biomedical, INC, California, USA and used in solid phase ELISA.

Lumpy Skin Disease Virus Antigen and Antisera

Standard purified reference LSDV antigens and antisera were kindly supplied from FADDL Plum Island, USA through Dr. J. House.

Cell Cultures (MDBK)

The cells were obtained from Ames, Iowa Laboratories, USA and were grown and maintained as described by Manual of Methods for Virology.

Preparation of LSDV Hyperimmune Serum

LSDV hyperimmune sera were prepared according to the method of Puranchand *et al.* (1985).

Evaluation of Prepared LSDV Hyperimmune Serum

Purity Test

In accordance with the United States Code of Federal Regulation (CFR). It was applied in Central Laboratory for Evaluation of Veterinary Biologics (CLEVB), Abbasia, Cairo.

Identity test

The LSDV antigen was identified by IFA using reference LSDV antisera as described by Davies and Otema (1978).

Agar Gel Precipitation Test (AGPT)

It was applied according to the method described by Sharma and Dhanda (1972) and Abd EI-Razek (1999).

Serum Neutralization Test (SNT)

This was carried on microtitre plate 96 well using cell culture method according to House *et al.* (1990) to screen the test animals before inoculation and to estimate the induced antibody titre in the prepared hyperimmune serum.

Enzyme Linked Immunosorbent Assay (ELISA)

Solid phase ELISA (indirect method) was done according to the method described by Williams (1987).

Precipitation of the Immunoglobulin

It was carried out by using a saturated solution of ammonium sulphate (75%) according to Narin and Marrack (1964), the globulin concentration was determined and adjusted to be 20 mg mL⁻¹ in Phosphate Buffer Solution (PBS).

Estimation of Total Protein

Measurement of the amount of total protein concentration of LSDV antiserum, was done by calorimetric method using spectrum diagnostic total protein reagent and read absorbance of serum at 540 nm, according to Cannon *et al.* (1974) and Tietz (1994).

CALCULATION

$$\text{Serum protein concentration (g dL}^{-1}\text{)} = \frac{A_{\text{specimen}}}{A_{\text{stander}}de} \times 6$$

Conjugation of the Prepared Immunoglobulins with FITC

The immunoglobulins were adjusted to be at least 20 mg mL⁻¹ PBS, then diluted in equal volume of chilled carbonate bicarbonate buffer pH 9.6. One milli gram of FITC powder was dissolved in 1 mL cold carbonate-bicarbonate buffer. Hundred microliter of diluted FITC were mixed with 100 mg immunoglobulins in PBS and left for 24 h at 4°C for complete conjugation, then pH was adjusted to 9 with sodium hydroxide solution. The non-specific FITC was removed by using 1% mice liver powder and dialyzed against several changes of PBS of pH 7.4 at 4°C.

Evaluation of the Prepared Immunoglobulins with FITC

Purity test

The prepared IgG with FITC was tested against bacterial, fungal, mycoplasma and extraneous virus contaminants.

Fluorescent Antibody Technique (FAT)

It was carried out according to Davies and Otema (1978), preparation of infected and non-infected control cover slips cultured with MDBK cells, different dilutions of conjugation were used up to 1/50.

RESULTS AND DISCUSSION

This study was designed to prepare hyperimmune sera against LSDV conjugated with fluorescein isothiocyanate to be used for virus diagnosis and titration in a trial to provide a specific local reagent to easily detection of LSDV to save time and costs.

The results of AGPT to prepared LSDV hyperimmune sera were found to contain specific LSDV precipitating antibodies (Table 1). These results were in agreement with these obtained by Sharma and Dhanda (1969, 1972) and Sharma *et al.* (1987).

The prepared LSDV hyperimmune sera was found to contain specific LSDV neutralizing antibodies of a titre 32 and 400 for previous viruses respectively as detected by SNT and ELISA. These results agreed with those obtained by Martin *et al.* (1975), Sharma *et al.* (1987), Office International Epizootic (1989) and Agag *et al.* (1992).

Table 1: Evaluation of prepared LSDV hyperimmune sera before conjugation

Purity test	Identify test		Titration before conjugation		Total concentration
	AGPT	IFAT	SNT (NA)	ELISA	
Serik ^{##}	2 ^{##}	+	32 ^{##}	400 ^{##}	0.8 g dL ⁻¹

^{##} Sterile: Free from contaminants (Bacterial, mycoplasma, fungus and extraneous viruses), ^{##} +: Indirect presence of antibodies against LSDV, ^{##} : Titre of neutralizing antibody after successive inoculation, ^{##} S/P: ELISA titre of indirect method. Cut-off about 128, AGPT: Agar Gel Precipitation Test, IFAT: Indirect Fluorescent Antibody Technique, SNT: Serum Neutralization Test, NA: Neutralizing Antibody, ELISA: Enzyme Linked Immunosorbent Assay

Table 2: Titration of prepared anti-LSDV-(IgG) fluoresce in conjugate and reference anti-bovine IgG fluoresce in conjugate

Conjugate dilution	Prepared anti-LSDV IgG conjugate with FITC	Reference anti-bovine IgG fluoresce in conjugate	Control ^{##}
1/2	+++ ^{##}	+++	-
1/5	+++	+++	-
1/10	++	+++	-
1/15	+ ^{##}	++	-
1/20	-	++	-
1/30	-	+	-
1/40	-	-	-
1/50	-	-	-

^{##} Strong positive reaction, ^{##} Weak positive reaction, ^{##} Non-specific negative non-infected cells

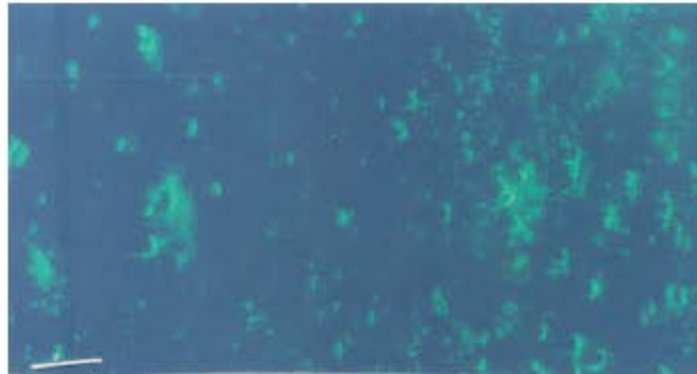


Fig. 1: MDBK cells infected with LSDV and stained with anti-LSDV conjugated fluorescein, notice that apple green fluorescence

The total protein in the prepared LSDV antisera was 0.8 g dL⁻¹ and this amount of proteins was satisfactory to use in conjugation with fluorescein. These results were in agreement with Nowotny(1979). The total protein of the negative sera was less than 0.8 g dL⁻¹. So, it was clear that the globulin as the immune protein forming the antibodies appeared to be higher than negative sera of the non-inoculated animals. These results are in agreement with those obtained by Kataria and Sharma (1993). The titre of conjugated LSDV IgG antibodies reached 1:32 which of good titre to use for conjugation (Nowotny, 1979).

The conjugated anti-LSDV hyperimmune serum demonstrated typical fluorescence staining reaction (apple green fluorescein up to 1:20) (Table 2).

Negative control cells showed dull green staining (negative reaction) when reacted with both conjugated at different dilution (Fig. 1). Moreover, detection of LSD viral antigen intracytoplasmic of infected cells were also recorded by Davies and Otema (1978), House *et al.* (1990) and Office International Epizootic (1992).

CONCLUSION

From this result, we can say that we could prepare anti-LSDV IgG conjugated with fluorescein of low price, rapid (within 1 h), good titre and good quality and quantity in pure form to be used for diagnosis of LSD infection and for identity evaluation of produced vaccine.

REFERENCES

- Abd El-Razek and B. Omar, 1999. Immunological studies on the effect of some sheep pox strains in goat. M.V.Sc. Thesis, Fac. Vet. Med., Zagazig University.
- Abd El-Razek and B. Omar, 2003. Virologic studies on Capripox group. Ph.D. Thesis, Fac. Vet. Med., Zagazig University.
- Aboul Saoud, E.A., 1996. Studies on the adaptation of lumpy skin disease virus (LSDV) in cell cultures. Ph.D. Thesis, Alex. University.
- Agag, R.I., S. Mousa, H.B. Hassan, M.S. Saber, N.S. El-Deghialy and A.M. Abdel Aziz, 1992. Clinical serological and biochemical studies on LSD. *J. Applied Anim. Res.*, 1: 13-23.
- Cannon, D.C., I. Olitzky and J.A. Inkpen, 1974. *Clinical Chemistry, Principles and Techniques*. 2nd Edn., Harper and Row, New York.
- Davies, F.G. and C. Otema, 1978. Identification of LSDV and Kenyan sheep and goat pox viruses by direct and indirect fluorescent antibody and serum neutralization test. *J. Comp. Pathol.*, 88: 205-210.
- House, J.A., M. Terrance, T.M. Wilson, N. El-Nakashly and I. Abdel Karim *et al.*, 1990. The isolation of LSDV and bovine herpes virus 4 from cattle in Egypt. *J. Vet. Diag. Invest.*, 2: 111-115.
- Kataria, A.K. and K.N. Sharma, 1993. Serum electrophoretic studies in sheep vaccinated with sheep pox virus (Romanian strain). *Ind. Vet. J.*, 2: 191-192.
- Martin, W.B., M. Erham and B. Omar, 1975. Studies on sheep vaccine, serum-virus neutralization test. *Pendik Veteriner Kontrol Avastirm Institutusu Dergisi*, 8: 28-47.
- Matthews, R.E.F., 1982. Classification, nomenclature of viruses. *Intervirolgy*, 17: 1-99.
- Narin, R.C. and J.R. Marrack, 1964. *Fluorescent Proteins Tracing*. 2nd Edn., Edinburgh and London, Livingstone.
- Nowotony, A., 1979. *Basic Exercises in Immunochemistry*. Berlin Heidelberg, New York.
- Office International Epizootic, 1989. Sheep and goat pox diseases diagnostic techniques and requirements for biological product. 7: 1-5.
- Office International Epizootic, 1992. Lumpy skin disease (LSD). *Manual*, 1: 57-61.
- Puranchand, V.D.P., S.K. Rao, J.P. Carg, I.P. Singh and R. Chandra, 1985. Counter immuno-electrophoresis for rapid diagnosis of sheep pox. *Br. Vet. J.*, 141: 124-128.
- Sharma, P.C., S. Prasad and S.K. Kalra, 1987. Immunological response of RM/65 sheep pox vaccine in lambs. *Ind. J. Anim. Sci.*, 57: 923-928.
- Sharma, S.N. and M.R. Dhanda, 1969. Serological studies of sheep and goat pox viruses. *Ind. J. Anim. Sci.*, 40: 522-528.
- Sharma, S.N. and M.R. Dhanda, 1972. Immuno-diffusion studies on sheep and goat pox viruses. *Ind. J. Anim. Sci.*, 41: 166-171.
- Tietz, N.W., 1994. *Fundamentals of Clinical Chemistry*. 2nd Edn., NW Tietz, USA.
- Williams, R., 1987. ELISA technique for diagnosis of African horse sickness virus. *J. Vet. Diag. Invest.*, 11: 9-11.