



International Journal of Pharmacology

ISSN 1811-7775

science
alert

ansinet
Asian Network for Scientific Information

***In vitro* Cytotoxic Activity of *Sargassum thunbergii* and *Dictyopteris divaricata* (Jeju Seaweeds) on the HL-60 Tumour Cell Line**

^{1,2}K.N. Kim, ^{1,2}Y.M. Ham, ^{1,2}J.Y. Moon, ^{1,2}M.J. Kim, ^{1,2}D.S. Kim,
^{1,2}W.J. Lee, ^{2,3}N.H. Lee and ^{1,2}C.G. Hyun

¹Jeju Biodiversity Research Institute (JBRI),
Jeju High-Tech Development Institute (HiDI), Jeju 699-943, Korea

²Jeju Seaweed Industry Development Agency, Korea

³Department of Chemistry, Cheju National University, Ara-dong, Jeju 690-756, Korea

Abstract: The cytotoxic activity of a variety of Jeju coastal seaweeds against a panel of tumour cell lines was tested *in vitro* using a calorimetric 3-(4,5-dimethylthiazol-2-yl)-2,5-diphenyltetrazolium bromide (MTT) assay. Twenty-three extracts were screened against HL-60 (human promyelocytic leukaemia cell line), HT-29 (human colon carcinoma cell line), B16F10 (murine melanoma cell line) and A549 (human lung cancer cell line). The ethyl acetate (EtOAc) extracts of *Sargassum thunbergii* and *Dictyopteris divaricata* showed excellent cytotoxic activity against the HL-60 cell line. Furthermore, the *S. thunbergii* extract also exhibited good cytotoxic activity against the HT-29 and B16F10 cell lines. To explore the mechanisms of cytotoxicity of *S. thunbergii* and *D. divaricata*, we used several measures of apoptosis to determine whether these processes were involved in EtOAc fraction-induced HL-60 cell death. We found that EtOAc fractions induced cell shrinkage, cell membrane blebbing and formation of apoptotic bodies. In addition, HPLC fingerprinting of the *S. thunbergii* extract revealed that fucosterol was a standard component of these fractions. These results suggest that *S. thunbergii* and *D. divaricata* have great potential value as food additives, medicinal supplements for patients with chronic diseases and preventive agents against cancer.

Key words: Apoptosis, *Dictyopteris divaricata*, HPLC fingerprinting, *Sargassum thunbergii*, seaweeds

INTRODUCTION

In the regulation of development and homeostasis in multicellular organisms, cell death is as important as cell proliferation. Although, physiological cell death is usually mediated via apoptosis, uncontrolled growth and proliferation and inhibited apoptosis are major characteristics of cancer cells. Apoptosis is a gene-regulated phenomenon that is induced by many chemotherapeutic agents in cancer treatment. The induction of apoptosis in tumour cells is considered to be useful not only for the management and treatment of cancer, but also for its prevention (Hersey and Zhang, 2001; Taraphdar *et al.*, 2001; Poncet and Kroemer, 2002). A wide variety of natural substances that can induce apoptosis in various tumour cells have been recognized. Thus, it is of considerable importance to be able to isolate apoptotic inducers (either in the form of crude extracts or as components) from bioresources (Afshari *et al.*, 2008). Much previous research has studied the biological effects

of natural marine products, including their antioxidant, antibacterial, anti-malarial, antiviral, anti-inflammatory and cytotoxic activities (Skropeta, 2008; Blunt *et al.*, 2009; Gademann and Kobylinska, 2009; Gulder and Moore, 2009; Mayer *et al.*, 2009; Napolitano *et al.*, 2009). However, only a few studies have examined the biological potential of the marine algae (seaweeds) (Afolayan *et al.*, 2008; Li *et al.*, 2008; Jung *et al.*, 2009; Kim *et al.*, 2009; Zhang and Kim, 2009). Jeju Island, the largest island in Korea, is located in the southwest Korea Strait and is famed for its distinctive environment. In particular, the sea levels around this island are known to fluctuate rapidly as a result of global warming. Therefore, in response to this unusual environment, the seaweeds that are present on Jeju Island may possess substantial endogenous protective mechanisms. Thus, the aim of this study was to evaluate the potential of certain Jeju seaweed species as sources of new cytotoxic compounds. To achieve this, the growth of a variety of tumour cell lines, HL-60 (human promyelocytic leukaemia cell line), HT-29 (human colon

carcinoma cell line), B16F10 (murine melanoma cell line) and A549 (human lung cancer cell line) were assessed *in vitro* using the calorimetric 3-(4,5-dimethylthiazol-2-yl)-2,5-diphenyltetrazolium bromide (MTT) assay.

MATERIALS AND METHODS

Preparation of Jeju seaweed extracts: Dried samples of Jeju seaweeds were prepared on Jeju Island from 2006 to 2007 and then identified by Dr. Wook Jae Lee. Previously, sample specimens were deposited at the herbarium of the Jeju Biodiversity Research Institute (JBRI), Jeju, Republic of Korea. The materials for extraction were cleaned, dried at room temperature for 2 weeks and then ground into a fine powder. The dried algae (100 g) were extracted with 80% ethanol (EtOH; 2 L) at room temperature for 24 h and then evaporated in a vacuum. The evaporated EtOH extract was then suspended in water (4 L) and partitioned with ethyl acetate (EtOAc; 4 L); this partitioning was repeated three times.

Cell culture: HL-60, HT-29 and A549 cells were grown in RPMI-1640 medium and B16F10 cells were grown in Dulbecco's Modified Eagle's Medium (DMEM) supplemented with 10% (v/v) heat-inactivated Foetal Bovine Serum (FBS), penicillin (100 U mL⁻¹) and streptomycin (100 µg mL⁻¹). Cultures were maintained in an incubator at 37°C and 5% CO₂ (Manthey and Guthrie, 2002).

Cell growth inhibitory assay: The cytotoxicity of each sample against the tumour cells was determined using a calorimetric MTT assay. Suspension cells (HL-60 cells) were seeded (5×10⁴ cells mL⁻¹) together with various concentrations (13, 25 and 50 µg mL⁻¹) of the sample and then incubated for a period of up to 72 h before MTT treatment. Attached cells (HT-29, A549 and B16 cells) were seeded in a 96-well plate at a concentration of 2×10⁴ cells mL⁻¹. The cells were treated with sample (100 µg mL⁻¹) 16 h after seeding and incubated for 72 h at 37°C. MTT stock solution (50 µL; 2 mg mL⁻¹ in PBS) was then added to each well to produce a total reaction volume of 250 µL. After incubating for 4 h, the plates were centrifuged at 2,000 rpm for 10 min and the supernatant was aspirated. The formazan crystals in each well were dissolved in DMSO and the amount of purple formazan was determined by measuring the absorbance at 540 nm (Idibie *et al.*, 2007).

Cytotoxicity assay of HaCaT cells: Human keratinocyte HaCaT cells were cultured in DMEM containing 10% FBS (Gibco) and penicillin-streptomycin at 37°C in a

humidified 95% air/5% CO₂ atmosphere. Cells were seeded on 48-well plates and drug treatment began 24 h after seeding. After HaCaT cells were incubated with 100 µg mL⁻¹ concentrations of EtOAc fractions of various seaweeds for 24 h at 37°C in 5% CO₂ atmosphere, MTT (1 mg mL⁻¹ in PBS) was added to each well in a 1/10 volume of media. Cells were incubated at 37°C for 4 h and DMSO was added to dissolve the formazan crystals. The absorbance was then measured at 570 nm with a spectrophotometer (Power Wave, Bio-tek).

Nuclear staining with Hoechst 33342: The nuclear morphology of the cells was studied using the cell-permeable, DNA-specific fluorescent dye Hoechst 33342. Cells with homogeneously stained nuclei were considered to be viable, whereas the presence of chromatin condensation and/or fragmentation was indicative of apoptosis (Gschwind and Huber, 1995; Lizard *et al.*, 1995). The HL-60 cells were placed in 24-well plate at a concentration of 1×10⁵ cells mL⁻¹. The cells were treated with various concentrations (13, 25, 50 and 100 µg mL⁻¹) of the sample and further incubated for 24 h. Subsequently, Hoechst 33342 was added to the culture medium to give a final concentration of 10 µg mL⁻¹ and the plate was incubated for an additional 10 min at 37°C. To ascertain the degree of nuclear condensation, the stained cells were then observed under a fluorescence microscope equipped with a CoolSNAP-Pro colour digital camera.

Flow cytometry analysis: To determine the proportion of apoptotic sub-G₁ hypodiploid cells, flow cytometry analysis was performed (Nicoletti *et al.*, 1991). The HL-60 cells were placed in a 6-well plate at a concentration of 1.0×10⁵ cells mL⁻¹ and treated with various concentrations (13, 25, 50 and 100 µg mL⁻¹) of the sample. After 24 h, the cells were harvested at the indicated time and fixed in 1 mL of 70% ethanol for 30 min at 4°C. The cells were washed twice with PBS and then incubated in the dark in 1 mL of PBS containing 100 µg PI and 100 µg RNase A for 30 min at 37°C. Flow cytometric analysis was performed using a FACSCalibur flow cytometer (Becton Dickinson, San Jose, CA, USA). The effect on the cell cycle was determined by measuring changes in the percentage of the cells engaged in each phase of the cell cycle; from these data, histograms were generated using the computer programmes Cell Quest and Mod-Fit (Wang *et al.*, 1999).

HPLC fingerprint of *S. thunbergii* and *D. divaricata* EtOAc extracts: As fucosterol was previously reported to be a seaweed component that is an effective anti-cancer agent (Lee *et al.*, 2003), we searched for this compound in

the EtOAc extracts of *S. thunbergii* and *D. divaricata*. The chromatographic analyses of *S. thunbergii* and *D. divaricata* EtOAc extracts was performed using High-Performance Liquid Chromatography (HPLC) with an Alliance™ Waters 2695 separation module; this was coupled to a Waters 2998 photodiode array detector that utilized a Capcell pak 4.6×250 mm C₁₈ column (particle size 5 μm, Shiseido Chemicals, Tokyo) at a flow rate of 1.0 mL min⁻¹. The column was placed in a column oven at 25°C (Yoon *et al.*, 2009). The mobile phase consisted of acetonitrile (CAN) and water. A gradient program was used as follows: a linear gradient from 70 to 100% ACN in the first 3 min and an isocratic elution with 100% ACN for 47 min.

RESULTS AND DISCUSSION

Cytotoxic activities of Jeju seaweeds against cancer cell lines: The algae source, provenance of the algae, harvest time or developmental stage, extraction technique, use of fresh or dried algae material and test methodology are all factors that influence the anti-tumour activity and therefore must be taken into account whenever anti-tumour assays are performed using these seaweeds. In this study, we tested the cytotoxic effects of 23 extracts of seaweeds, collected from Jeju Island, on HL-60, HT-29, B16 and A549 cells. These cells were subjected to 72 h of exposure at either a 25 or 100 μg mL⁻¹ concentration (Table 1). As a control group, some cells were incubated

with the same concentration of DMSO. The percentage inhibition of seaweed extracts (25 μg mL⁻¹) from *Dictyopteris divaricata*, *Lomentaria hakodatensis*, *Dictyopteris prolifera*, *Colpomenia sinuosa*, *Sargassum thunbergii* and *Hizikia fusiformis*, on HL-60 cell lines was over 40%. Of the 23 seaweeds, *D. divaricata* (JBR246) and *S. thunbergii* (JBR511) displayed the strongest cytotoxic effects on human HL-60. Furthermore, *S. thunbergii*, *Carpopeltis affinis* and *H. fusiformis* also demonstrated cytotoxic effects greater than 50% on HT-29 cell lines. We compared the cytotoxic effects of seaweed extracts on cancer cells with the effects on normal cells (human keratinocytes, HaCaT). As shown in Table 1, with the exceptions of *H. fusiformis*, *Grateloupia elliptica* and *Gloiopeltis furcata*, the viability of human keratinocytes (HaCaT) that were exposed to concentrations up to 100 μg mL⁻¹ for periods of 72 h was barely affected. These results suggest that Jeju seaweeds have irreversible cytotoxic effects on HL-60 cells but not on normal cells. To determine the concentration-dependent effects of JBR246 and JBR511 on the HL-60 cells, the MTT conversion assay was performed. Cells were exposed to various concentrations of JBR246 and JBR511 (13, 25, 50 and 100 μg mL⁻¹) for 72 h. Cells treated with 0.1% DMSO were used as a control. As shown in Fig. 1, both JBR246 and JBR511 exerted a cytotoxic effect on HL-60 cells in a dose-dependent manner. The IC₅₀ values of JBR246 and JBR511, calculated from the graph, were 23.46 and 15.15 μg mL⁻¹, respectively.

Table 1: Growth inhibition activity of EtOAc fraction from Jeju seaweeds on tumour cells

Scientific names	HL-60		HT-29	B16	A549	HaCaT
	100	25	100	100	100	100
	(μg mL ⁻¹)					
<i>Petalonia binghamiae</i>	60.6±5.3	13.1±1.5	37.0±9.2	54.9±3.3	4.1±8.2	23.6±0.08
<i>Dictyopteris divaricata</i>	85.3±0.6	63.1±3.9	32.2±9.0	29.3±4.2	6.5±3.4	19.2±0.03
<i>Myelophycus simplex</i>	88.1±0.7	5.1±8.5	34.6±7.0	47.4±5.4	6.4±9.7	12.2±0.08
<i>Lomentaria hakodatensis</i>	87.5±0.5	54.1±6.5	25.7±9.4	42.2±1.3	4.6±7.7	14.6±0.11
<i>Dictyopteris prolifera</i>	53.3±8.7	46.1±1.4	1.5±5.0	17.9±8.9	4.3±5.1	14.2±0.14
<i>Prionitis cornea</i>	79.5±4.3	0.3±4.9	9.8±2.6	9.9±10.4	9.9±2.5	22.7±0.08
<i>Chondrus ocellatus</i>	54.9±2.7	1.6±5.5	8.4±7.9	12.2±3.7	2.6±5.7	2.4±0.28
<i>Ishige okamuraa</i>	36.3±5.1	1.2±7.5	3.2±3.8	4.1±6.5	1.5±9.5	-6.7±0.16
<i>Grateloupia lanceolata</i>	87.0±0.8	3.9±8.1	0.9±1.1	35.4±7.6	5.5±6.5	18.7±0.07
<i>Bonnemaisonia hamifera</i>	86.5±1.3	32.6±9.9	5.5±5.8	41.4±8.7	9.7±9.6	8.1±0.14
<i>Laurencia intricata</i>	87.3±0.6	7.5±4.8	2.0±6.6	34.5±5.0	2.1±4.2	17.1±0.29
<i>Ecklonia cava</i>	6.7±8.7	15.4±2.5	8.1±5.3	9.3±6.6	2.8±2.9	-21.7±0.17
<i>Scytosiphon lomentaria</i>	79.4±0.5	1.7±7.6	2.4±2.8	23.9±6.8	3.6±2.4	22.5±0.12
<i>Grateloupia filicina</i>	83.5±2.3	4.4±7.6	2.1±4.8	41.1±4.6	4.6±4.0	14.6±0.08
<i>Colpomenia sinuosa</i>	86.5±1.3	42.1±8.5	34.3±8.4	37.6±2.8	1.1±7.0	17.3±0.37
<i>Callophyllis crispata</i>	88.6±0.3	9.9±1.9	28.3±6.0	7.7±4.7	8.7±3.7	1.3±0.13
<i>Chondria crassicaulis</i>	86.8±0.3	9.0±8.1	2.9±4.8	38.0±6.4	7.7±5.7	5.0±0.24
<i>Grateloupia elliptica</i>	88.3±1.6	4.3±6.2	44.6±5.6	20.7±9.0	5.1±8.2	33.1±0.25
<i>Sargassum thunbergii</i>	89.7±1.6	58.7±1.0	57.8±8.1	42.1±10.6	1.2±4.0	14.6±0.09
<i>Chondrus crispus</i>	87.0±0.7	6.8±7.0	39.8±6.2	25.4±6.9	1.1±0.6	10.6±0.05
<i>Gloiopeltis furcata</i>	89.3±0.5	15.8±3.9	37.9±6.4	27.2±2.6	2.0±1.9	31.7±0.09
<i>Carpopeltis affinis</i>	86.3±0.4	36.4±11.0	57.9±6.7	45.0±6.5	6.5±7.6	17.6±0.19
<i>Hizikia fusiformis</i>	86.5±0.4	49.7±5.5	59.2±1.6	37.2±7.7	2.1±5.1	64.6±0.06

The cytotoxic effects of 23 extracts of edible seaweeds, collected from Jeju Island, on HL-60 (human promyelocytic leukaemia cell line), HT-29 (human colon carcinoma cell line), B16F10 (murine melanoma cell line) and A549 (human lung cancer cell line) cells were tested. These cells were subjected to exposure for 72 h at 25 μg mL⁻¹ or 100 μg mL⁻¹ concentrations. The cytotoxic effects of seaweed extracts on cancer cells were compared with the effects on normal cells (human keratinocytes, HaCaT) as a control

Observation of JBR246- and JBR511-induced morphological changes in HL-60 cells under the fluorescent microscope: To test whether the decrease in cell viability observed after treatment with JBR246 and JBR511 was due to apoptosis, the HL-60 cells were stained with Hoechst 33342 dye. This dye stains the condensed chromatin of apoptotic cells more brightly than it stains the chromatin of normal cells. As shown in Fig. 2, Hoechst staining, which correlates with the presence of cells with a typical apoptotic nuclear

morphology (nuclear shrinkage, DNA condensation and fragmentation), was present in the JBR246- and JBR511-treated cells, but not in the untreated controls.

Effects of JBR246 and JBR511 on the population of hypodiploid cells among the HL-60 cells: To test whether JBR246 and JBR511 induced cell death via apoptosis, the percentages of apoptotic cells were measured via flow cytometry. In recent years, flow cytometry has emerged as a rapid and sensitive technique for studying cell membranes and intracellular changes in various cell types (Teng *et al.*, 2006). Flow cytometric analysis was performed to determine the presence of hypodiploid cells. In flow cytometry histograms, apoptotic cells produce DNA fluorescence in the subdiploid regions. Therefore, we used flow cytometric analysis to assess the progression of the cell cycle and to discriminate between cells that were experiencing apoptosis and those that were undergoing necrosis as a result of the lethal effects of JBR246 and JBR511. In HL-60 cells that were treated with JBR246 or with JBR511, there was the appearance of a hypodiploid peak (A_0 region), thought to be due to the presence of apoptosing cells and/or apoptotic bodies with a DNA content less than $2n$ (Fig. 3A, 4A). Quantitation of the apoptotic cells showed a dose-dependent response to exposure to either JBR246 or JBR511 (Fig. 3B, 4B); this result is in accordance with the finding of morphological changes. To determine the percentage of cells in the sub- G_1 , G_1/G_1 , S and G_2/M phases for both the control cells

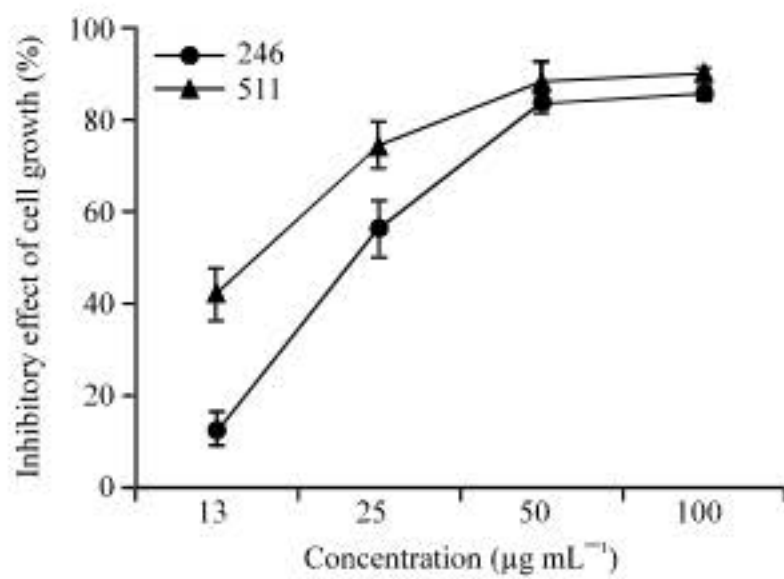


Fig. 1: Inhibitory effect of JBR246 and JBR511 fractions against the growth of HL-60 cells. HL-60 cells were incubated with various concentrations (13, 25, 50 and $100 \mu\text{g mL}^{-1}$) of JBR246 and JBR511 extracts for 72 h and the cell viability was examined via MTT assay

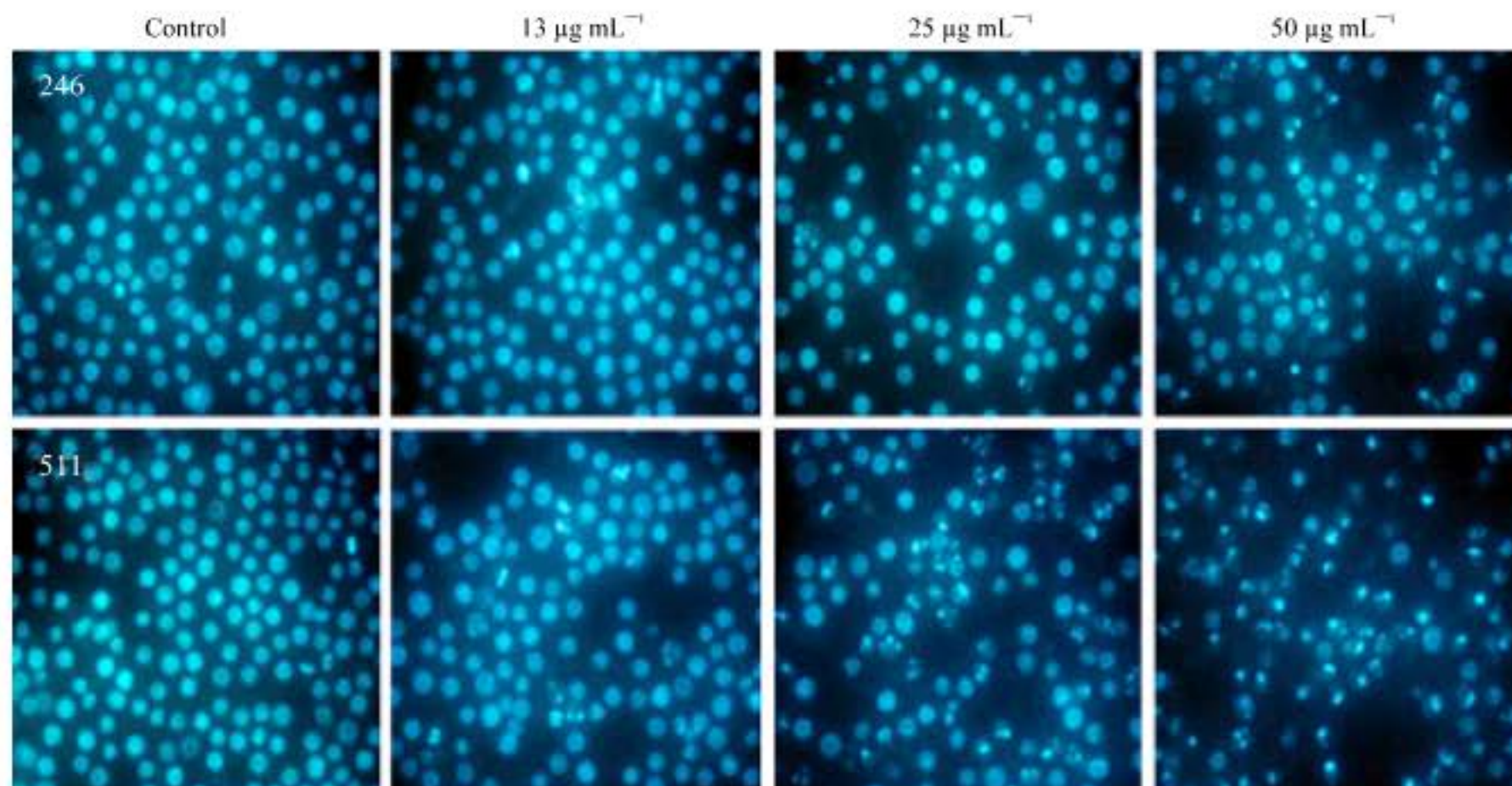


Fig. 2: Effect of JBR246 and JBR511 fractions on morphology of HL-60 cells. HL-60 cells were incubated with various concentrations (13, 25 and $50 \mu\text{g mL}^{-1}$) of the JBR246 and JBR511 fractions for 8 h. Cells were stained with Hoechst 33342 and the stained nuclei were imaged under a fluorescent microscope

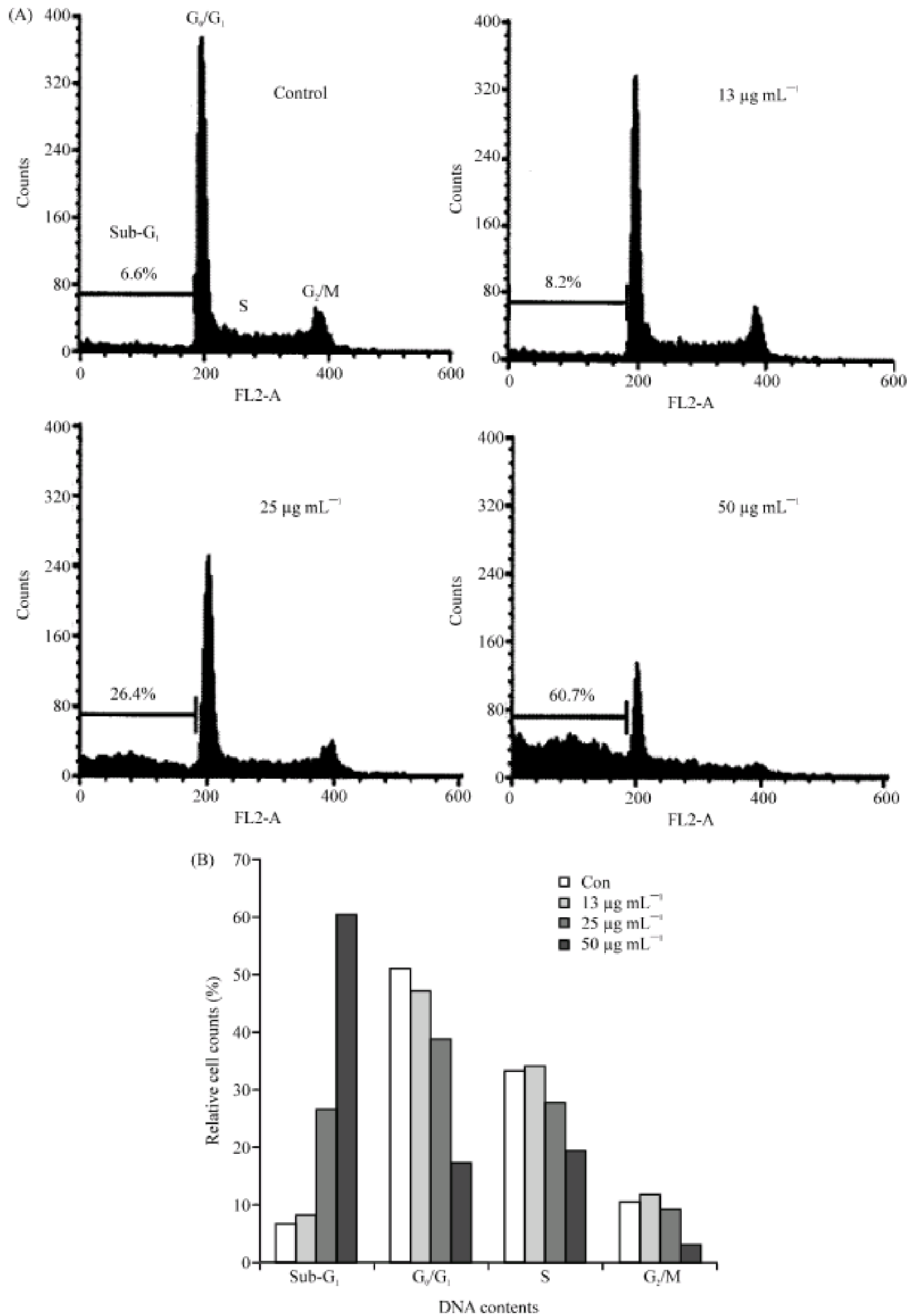


Fig. 3: Effect of the JBR246 fraction on the cell cycle pattern and on the fraction of apoptotic cells in the population of HL-60 cells, as measured by flow cytometric analysis. HL-60 cells were treated with various concentrations (13, 25 and 50 µg mL⁻¹) of JBR246 for 72 h. A sub-G₁ peak, which is indicative of apoptotic cells was induced in JBR246-treated cells but not in control cells. (A) Histogram of cell cycle patterns of HL-60 cells. (B) Bar graph of cell cycle patterns of HL-60 cells

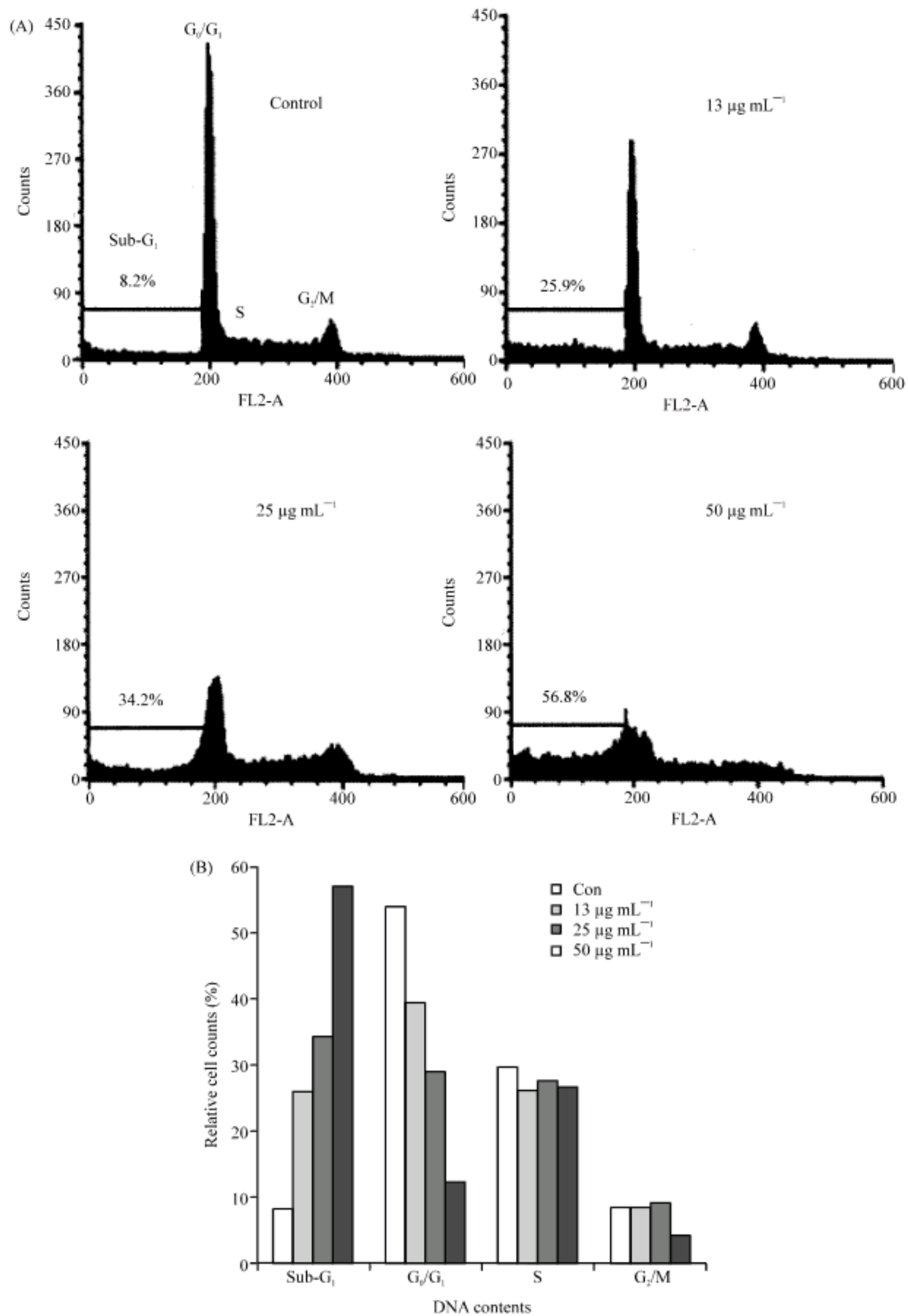


Fig. 4: Effect of the JBR511 fraction on the cell cycle pattern and percentage of HL-60 cells undergoing apoptosis, as measured by flow cytometric analysis. HL-60 cells were treated with various concentrations (13, 25 and 50 µg mL⁻¹) of JBR511 for 72 h. A sub-G₁ peak, which is indicative of apoptotic cells was induced in JBR511-treated but not in control cells. (A) Histogram of cell cycle patterns of HL-60 cells. (B) Bar graph of cell cycle patterns of HL-60 cells

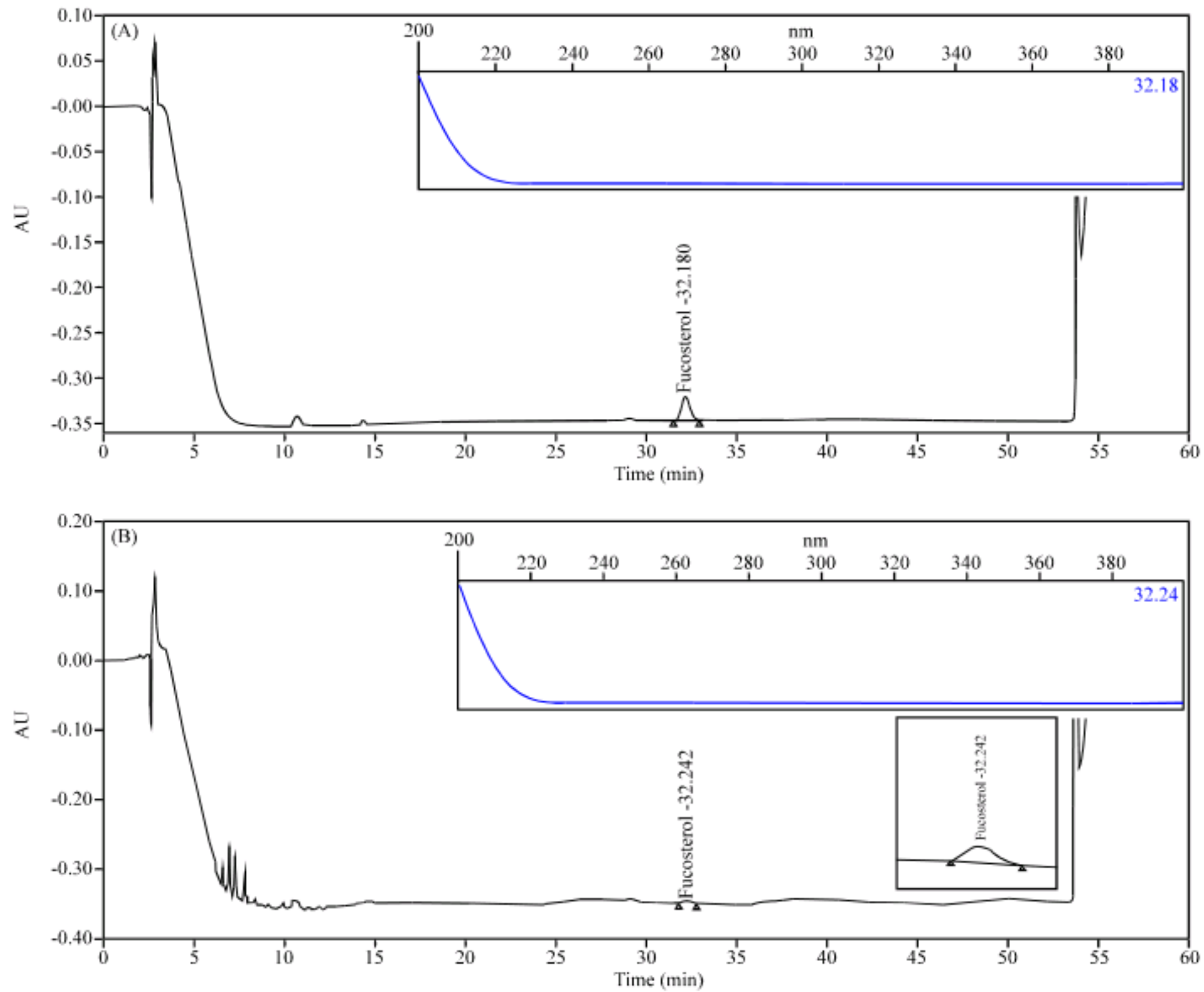


Fig. 5: HPLC fingerprinting analysis of the JBR511 EtOAc extract. HPLC profiles of authentic fucosterol and JBR511 EtOAc extract are shown in (A) and (B), respectively

and the cells that were treated with JBR246 and JBR251, quantitative analyses of the histograms for 24 h are shown. These data clearly indicate that JBR246 and JBR511 cause an increase in the percentage of cells at the sub- G_1 phase and a significant decrease in the percentage of cells at the G_2/G_1 phases (Fig. 3A, 4A). Present results suggest that cell cycle-induced apoptosis is a mechanism by which JBR246 and JBR511 exert their antiproliferative effects.

HPLC fingerprint of the JBR246 and JBR511 extracts:

According to traditional oriental medicine, the therapeutic actions of herbal medicines are based on the integrated interaction of many different ingredients. With the development of analytical technology, the use of chromatographic methods to develop fingerprints for traditional oriental medicines and their raw materials is highly recommended. Thus, interest in HPLC fingerprint

analysis has increased not only in Asia, but also in other countries around the world (Zhang *et al.*, 2007; Yoon *et al.*, 2009). Therefore, simple HPLC fingerprints of the algae were explored in this study. In accordance with previous studies that confirmed that fucosterol is a seaweed component with effective anti-tumour properties, substantial amounts of this substance were detected. Using the conditions described in the experimental section, fucosterol was well resolved (with excellent peak shapes) from the JBR511 EtOAc extracts (Fig. 5). The fucosterol content in the EtOAc extracts was 15 ppm. Thought, it was previously reported that *D. divaricata* harbours several bio-active compounds in addition to fucosterol, including dictyvaric acid, 1,4-epoxymurolan-5 β -ol, (-)-torreyol, 4 β , 5 α -dihydroxycubenol, 3-farnesyl-p-hydroxybenzoic acid, chromazonarol, phenyl acetylamine, 4-hydroxybenzoic acid and n-hexadecanoic acid (Song *et al.*, 2005, 2006; Wen *et al.*, 2009). In

contrast, fucosterol was not detected in the JBR246 EtOAc extracts. This can be attributed to the presence of only trace amounts of fucosterol or to seasonal and regional differences. Further investigations will focus on the *in vivo* assessment of the biological activity of the JBR246 and JBR511 extracts and on the chemical identification of the major active components responsible for anti-tumour activity in the efficacious extracts. To the best of our knowledge, this is the first report demonstrating the *in vitro* anti-cancer activity of the EtOAc extracts of *S. thunbergii* and *D. divaricata* and providing a scientific basis for its effects on human health.

CONCLUSION

JBR246 and JBR511 could decrease cell viability in HL-60 cells in a concentration-dependent manner. The IC_{50} values of JBR246 and JBR511 after 72 h were 23.46 and 15.15 $\mu\text{g mL}^{-1}$, respectively. Both JBR246 and JBR511 induced a sub-G1 peak in the flow cytometry histogram of treated cells compared to control cells, indicating that apoptotic cell death is involved in JBR246- and JBR511-induced toxicities. It might be concluded that JBR246 and JBR511 could cause cell death in HL-60 cells, in which apoptosis or programmed cell death plays an important role. JBR246 and JBR511 could be also considered as a promising chemotherapeutic agent in cancer treatment in the future. As the amounts of JBR246 and JBR511 used in this study were large, it is possible that the active agents represent only a small component of the extracts. Therefore, further studies are required in order to fractionate the active components and to elucidate the exact mechanism of action.

ACKNOWLEDGMENTS

This research was supported in part by the Program for the RIS (Regional Innovation System; JEJU SEA-GREEN PROJECT) and the Regional Technology Innovation Program (RTI04-02-07), both of which are managed by the Ministry of Knowledge and Economy, Korea.

REFERENCES

Afolayan, A.F., J.J. Bolton, C.A. Lategan, P.J. Smith and D.R. Beukes, 2008. Fucoxanthin tetraprenylated toluquinone and toluhydroquinone metabolites from *Sargassum heterophyllum* inhibit the *in vitro* growth of the malaria parasite *Plasmodium falciparum*. *Z Naturforsch C.*, 63: 848-852.

Afshari, J.T., A. Brook and S.H. Mousavi, 2008. Study of cytotoxic and apoptogenic properties of saffron extract in human cancer cell lines. *Food Chem. Toxicol.*, 46: 3443-3447.

Blunt, J.W., B.R. Copp, W.P. Hu, M.H. Munro, P.T. Northcote and M.R. Prinsep, 2009. Marine natural products. *Nat. Prod. Rep.*, 26: 170-244.

Gademann, K. and J. Kobylinska, 2009. Antimalarial natural products of marine and freshwater origin. *Chem. Rec.*, 9: 187-198.

Gschwind, M. and G. Huber, 1995. Apoptotic cell death induced by β -amyloid 1-42 peptide is cell type dependent. *J. Neurochem.*, 65: 292-300.

Gulder, T.A. and B.S. Moore, 2009. Chasing the treasures of the sea bacterial marine natural products. *Curr. Opin. Microbiol.*, 12: 252-260.

Hersey, P. and X.D. Zhang, 2001. How melanoma cells evade trail-induced apoptosis. *Nat. Rev. Cancer*, 1: 142-150.

Idibie, C.A., H. Davids and S.E. Iyuke, 2007. Cytotoxicity of purified cassava linamarin to a selected cancer cell lines. *Bioproc. Biosyst. Eng.*, 30: 261-269.

Jung, W.K., Y.W. Ahn, S.H. Lee, Y.H. Choi and S.K. Kim *et al.*, 2009. *Ecklonia cava* ethanolic extracts inhibit lipopolysaccharide-induced cyclooxygenase-2 and inducible nitric oxide synthase expression in BV2 microglia via the MAP kinase and NF-kappaB pathways. *Food Chem. Toxicol.*, 47: 410-417.

Kim, M.M., N. Rajapakse and S.K. Kim, 2009. Anti-inflammatory effect of *Ishige okamurae* ethanolic extract via inhibition of NF-kappaB transcription factor in RAW 264.7 cells. *Phytother. Res.*, 23: 628-634.

Lee, S., Y.S. Lee, S.H. Jung, S.S. Kang and K.H. Shin, 2003. Anti-oxidant activities of fucosterol from the marine algae *Pelvetia siliquosa*. *Arch. Pharm. Res.*, 26: 719-722.

Li, Y., S.H. Lee, Q.T. Le, M.M. Kim and S.K. Kim, 2008. Anti-allergic effects of phlorotannins on histamine release via binding inhibition between IgE and Fc epsilonRI. *J. Agric. Food Chem.*, 24: 12073-12080.

Lizard, G., S. Fournel, L. Genestier, N. Dhedin and C. Chaput *et al.*, 1995. Kinetics of plasma membrane and mitochondrial alterations in the cells undergoing apoptosis. *Cytometry*, 21: 275-283.

Manthey, J.A. and N. Guthrie, 2002. Antiproliferative activities of citrus flavonoids against six human cancer cell lines. *J. Agric. Food Chem.*, 50: 5837-5843.

- Mayer, A.M., A.D. Rodríguez, R.G. Berlinck and M.T. Hamann, 2009. Marine pharmacology in 2005-6: Marine compounds with anthelmintic, antibacterial, anticoagulant, antifungal, anti-inflammatory, antimalarial, antiprotozoal antituberculosis and antiviral activities affecting the cardiovascular immune and nervous systems and other miscellaneous mechanisms of action. *Biochim. Biophys. Acta.*, 1790: 283-308.
- Napolitano, J.G., A.H. Daranas, M. Norte and J.J. Fernández, 2009. Marine macrolides a promising source of antitumor compounds. *Anticancer Agents Med. Chem.*, 9: 122-137.
- Nicoletti, I., G. Migliorati, M.C. Pagliacci, F. Grignani and C. Riccardi, 1991. A rapid and simple method for measuring thymocyte apoptosis by propidium iodide staining and flow cytometry. *J. Immunol. Methods*, 139: 271-279.
- Poncet, K.M. and G. Kroemer, 2002. Chemotherapy targeting the mitochondrial cell death pathway. *Oncogene*, 21: 8786-8803.
- Skropeta, D., 2008. Deep-sea natural products. *Nat. Prod. Rep.*, 25: 1131-1166.
- Song, F.H., X. Fan, X.L. Xu, J.L. Zhao, J.J. Han and J.G. Shi, 2005. Chemical constituents of the brown alga *Dictyopteris divaricata*. *J. Asian Nat. Prod. Res.*, 7: 777-781.
- Song, F.H., X. Fan, X.L. Xu, S.J. Wang, S. Li, Y.C. Yang and J.G. Shi, 2006. Studies on chemical constituents of the brown alga *Dictyopteris divaricata*. *Zhongguo Zhong Yao Za Zhi.*, 31: 125-128.
- Taraphdar, A.K., M. Roy and R.K. Bhattacharya, 2001. Natural products as inducers of apoptosis: Implication for cancer therapy and prevention. *Curr. Sci.*, 80: 1387-1396.
- Teng, B.S., Y.H. Lu, Z.T. Wang, X.Y. Tao and D.Z. Wei, 2006. *In vitro* anti-tumor activity of isorhamnetin isolated from *Hippophae rhamnoides* L. against BEL-7402 cells. *Pharmacol. Res.*, 54: 186-194.
- Wang, X.W., Q. Zhan, J.D. Coursen, M.A. Khan and H.U. Kontny *et al.*, 1999. GADD45 induction of a G₂ M cell cycle checkpoint. *Proc. Natl. Acad. Sci. USA.*, 96: 3706-3711.
- Wen, W., F. Li, N.Y. Ji, X.M. Li and C.M. Cui *et al.*, 2009. A new cadinane sesquiterpene from the marine brown alga *Dictyopteris divaricata*. *Molecules*, 14: 2273-2277.
- Yoon, W.J., Y.M. Ham, B.S. Yoo, J.Y. Moon, J. Koh and C.G. Hyun, 2009. *Oenothera laciniata* inhibits lipopolysaccharide induced production of nitric oxide prostaglandin E₂ and proinflammatory cytokines in RAW264.7 macrophages. *J. Biosci. Bioeng.*, 107: 429-438.
- Zhang, C. and S.K. Kim, 2009. Matrix metalloproteinase inhibitors (MMPi) from marine natural products the current situation and future prospects. *Mar. Drugs.*, 7: 71-84.
- Zhang, X.Y., J.Y. Tao, L. Zhao, Z.J. Huang and F.L. Xiong *et al.*, 2007. *In vitro* anti-inflammatory effects of different solution fractions of ethanol extract from *Melilotus suaveolens* Ledeb. *Chin. Med. J. (Engl.)*, 120: 1992-1998.