

ISSN 1682-8356
ansinet.org/ijps



INTERNATIONAL JOURNAL OF
POULTRY SCIENCE

ANSI*net*

308 Lasani Town, Sargodha Road, Faisalabad - Pakistan
Mob: +92 300 3008585, Fax: +92 41 8815544
E-mail: editorijps@gmail.com

Growth Performances, Carcass and Organs Characteristics and Economics Results of Growing Indigenous Senegal Chickens Fed Diets Containing Various Levels of *Leuceana leucocephala* (Lam.) Leaves Meal

S.B. Ayssiwede¹, C.A.A.M. Chrysostome², J.C. Zanmenou¹, A. Dieng³,
M.R. Houinato², M. Dahouda², Y. Akpo⁴, J.L. Hornick⁵ and A. Missohou¹

¹Laboratoire d'Alimentation et de Nutrition Animale (LANA),
Ecole Inter-Etats des Sciences et Médecine Vétérinaires (EISMV) de Dakar,
BP: 5077, Dakar-Fann (Senegal)

²Département de Productions Animales, Faculté des Sciences Agronomiques
de l'Université d'Abomey-Calavi, 01BP: 526, Cotonou (Bénin)

³Laboratoire de Bromatologie, Ecole Nationale Supérieure d'Agriculture (ENSA) de THIES,
Route de Khombole, BP: A296, Thiès, (Sénégal)

⁴Département de Productions Animales, Ecole Polytechnique de l'Université d'Abomey-Calavi,
01 BP: 2009, Cotonou, (Bénin)

⁵Service de Nutrition Animale, Faculté de Médecine Vétérinaire de l'Université de Liège,
Boulevard de Colonster, 20, Bat. B43, 4000 Liège, (Belgique)

Abstract: The aim of this study carried out from September to December 2010 was to evaluate the effects of *Leuceana leucocephala* leaves meal inclusion in the diets on growth performances, carcass and organs characteristics and economics results of growing indigenous Senegal chickens. One hundred and four (104) indigenous Senegal chicks of 4 weeks old were randomly allocated into four groups of 26 chicks each with similar body weight. Each group subdivided in two repetitions of 13 birds, corresponded to each of the four (4) dietary treatments LL₀, LL₇, LL₁₄ and LL₂₁ containing respectively 0, 7, 14 and 21% of *Leuceana* leaves meal in substitution of groundnut cake meal. During the experiment (5-17th week old), zootechnical parameters of birds and economical data were recorded and analyzed per dietary treatment. At the end of the 13 weeks trial, the final Live Body Weights (LBW) were 864 g, 1166.48 g, 905 g and 887.16 g/bird, the Average Daily Weight Gain (ADWG) were 7.77 g, 10.88 g, 8.15 g and 8.10 g/day, the Daily Feed Intake (DFI) of 39.86 g, 51 g, 40.39 g and 44.75 g/bird and the Feed Conversion Ratio (FCR) of 7.04, 5.54, 6.27 and 6.80 respectively for birds fed LL₀, LL₇, LL₁₄ and LL₂₁ diets. The *Leuceana* leaves meal inclusion in the diets up to 21% had not caused any adverse effect on LBW, ADWG, DFI, FCR, mortality, carcass and organs characteristics in birds compared to their controls. Apart from the dark yellowing of abdominal fat of carcasses from birds fed LL₂₁ diet, significantly better growth performances, feed costs and economic margins were recorded in birds fed LL₇ and LL₁₄ diets. Thus, these two dietary treatments were the only most economically profitable (respectively 214 and 48 FCFA/kg carcass of additional profit) compared to the control.

Key words: Growth performances, feeding, economic margin, indigenous chickens, *Leuceana leucocephala* leaves, carcass and organ characteristics, Senegal

INTRODUCTION

In Senegal or in sub-Saharan Africa, the indigenous poultry farming, although very little concerned by development projects (states paying more attention to the industrial poultry), accounts for 75-80% of poultry herd and is practiced by almost all peasants, including women and children of rural areas (Agbede *et al.*, 1995; Gueye, 2000; Bebay, 2006; Traore, 2006). It remains the most widespread or common way of livestock handling

and constitutes an important pillar of food security improvement, socio-cultural and economic development despite the remarkable growth recorded in recent years in industrial poultry (Kitalyi and Mayer, 1998; Missohou *et al.*, 2002; Alders, 2005; Dieye *et al.*, 2010). In most developing countries, indigenous chickens or its products in the market are more expensive than that of selected exotic chickens. Traditional poultry farming contributes to 70% of poultry production and provides

about 20% of the consumed protein by the population in these countries (Alders, 2005; Fotsa *et al.*, 2007; Teno, 2009). Despite these many important roles, the traditional poultry development is still limited by various constraints among which food is a major challenge. Apart from diseases and predators, village poultry faced a recurring quantitative and qualitative food shortage particularly in poor agricultural or household residues environment in addition to the inadequate or lack of dietary supplement (Buldgen *et al.*, 1992; Bonfoh *et al.*, 1997; Gueye, 1997; Hofman, 2000; Tadelles and Ogle, 2001; Sonaiya and Swan, 2004; Rashid *et al.*, 2005; Pousga *et al.*, 2005; Halima *et al.*, 2007a). Moreover, the common protein sources (groundnut cake, soybean, etc.) and other ingredients used in poultry feeding have become too expensive because of their excessive demand in Senegal or in international market due to the context of their diversion to biofuel production (Dombia, 2002). All this, consequently, had highly reduced access to these resources for poor traditional stockholders compared to industrial poultry farmers, with the resulting a low productivity of village poultry flock. Several authors had shown that fed in partial or total improved dietary supplement, particularly with diet based on local and cheaper ingredients is necessary to maximize productivity and profitability in village chickens breeding (Buldgen *et al.*, 1992; Kondombo *et al.*, 2003; Rashid *et al.*, 2004; Riise *et al.*, 2004; Pousga *et al.*, 2006; Halima *et al.*, 2007b; Kingori *et al.*, 2007). In these conditions and in order to allow indigenous poultry livestock to contribute effectively to the poverty and food insecurity alleviation, it would be useful and essential to increase their productivity by improving their feeding strategies through available unconventional and local feed resources' utilization, from which the interest of this study. At this end, studies carried out on leguminous or by-products such as *Leuceana leucocephala* leaves available in Senegal, have reported that they were important feed resources relatively rich in nutrients, carotenoids pigments and vitamins (Akbar and Gupta, 1985; Ekpenyong, 1986; Aletor and Omodara, 1994; Ayssiwede *et al.*, 2011; Mutayoba *et al.*, 2011). Although the presence of mimosine, an important toxic factor has often been mentioned as the handicap of their intensive use (D'Mello, 1992 and 1982; Semenye, 1990), they have been used both in ruminants (Jones and Megaritty, 1983; Pamo *et al.*, 2005) and in poultry or monogastrics feeding with various performances depending on their nutritional value and inclusion level in the diets (Ter Meulen *et al.*, 1984; D'Mello *et al.*, 1987; D'Mello and Acamovic, 1989; Hussain *et al.*, 1991; Atawodi *et al.*, 2008; Onibi *et al.*, 2008). Ayssiwede *et al.* (2010b) had previously found that *L. leucocephala* leaves meal incorporation in the diets of adult indigenous chickens up to 21% in partial substitution of groundnut cake meal, had not caused any adverse effect on nutrients retention

and significantly improved apparent coefficients of nutrients and energy utilization, particularly in birds fed diets containing 7 and 14% of these leaves meal. The aim of this study was then to assess the effects of *Leuceana* leaves meal inclusion in the diets on growth performances, carcass and organs characteristics and economics results in growing indigenous Senegal chickens.

MATERIALS AND METHODS

Vegetable material and other ingredients used in experimental diets: The *Leuceana leucocephala* leaves used for this study were mainly collected in the region of Thiès, 70 km from Dakar, particularly in the High National Agricultural School of Thiès (ENSAT) and in the neighbourhood villages' fields. Branches of plants bearing leaves were cut and transported to the ENSAT where they were displayed evenly under a semi-open shed for 1-2 days. The branches and twigs were then removed and the leaflets of the leaves were retrieved. They were sun-dried during 1-3 days until they become soft crispy while still retaining the greenish coloration. Indeed, drying was able to reduce or eliminate the potential labile toxic factors (mimosine, lectin) present in the leaves (D'Mello and Fraser, 1981; Tangendjaja *et al.*, 1984; Wee and Wang, 1987). These sun-dried leaves were then processed into meal using a grinder mesh of 4 mm in diameter. The leaves meal was packaged in bag of 50 kg and stored until use. The other ingredients used reported in Table 1, were bought at the markets of Dakar and Thiès. Samples of the various ingredients including *Leuceana* leaves meal were subjected to proximate analyses before being used in the experimental diets formulation.

Proximate analyses and experimental diets formulation: Chemical analyses were carried out in the laboratory of food and animal nutrition of Dakar's Interstates School of Sciences and Veterinary Medicine (EISMV). They were focused both on the various ingredients and the experimental diets and concerned the determination of Dry Matter (DM), total ash, Crude Protein (CP), Ether Extract (EE), Crude Fiber (CF) and minerals, particularly calcium and phosphorus. The DM and total ash of different samples were obtained according to standard methods of the French Association for Standardization, AFNOR (1977). The CP content was based on the Kjeldahl method ($N \times 6.25$) and that of EE was determined by reflux extraction method for 6 h with diethyl ether using the Soxhlet apparatus described by the same standard. The CF determination was carried out following AFNOR (1993) standard based on the Weende's method. The calcium was measured according to the photometric absorption method of AFNOR (1984) and the total phosphorus determination was done using the spectrophotometric method at

Table 1: Ingredients composition and calculated nutrients value of *Leuceana Leucocephala* (LL) experimental diets for growing indigenous senegal chickens

Ingredients	Ingredients prices (FCFA ¹ /kg)	Dietary treatments			
		LL ₀	LL ₇	LL ₁₄	LL ₂₁
Yellow maize (%)	160.00	24.00	26.40	29.14	28.50
White sorghum (%)	150.00	14.00	13.62	8.00	5.00
Millet (%)	185.00	18.00	14.00	16.00	17.80
Groundnut oil (%)	1110.00	0.00	0.80	1.30	2.00
Wheat bran (%)	100.00	16.50	14.00	9.10	5.00
Groundnut cake (%)	150.00	23.00	18.00	16.00	14.00
Leuceana leaves meal (%)	65.00	0.00	7.00	14.00	21.00
Fish meal (%)	415.00	0.25	2.20	2.70	3.00
Dicalcium phosphate (%)	184.00	1.15	0.85	0.90	0.70
Food chalk (%)	90.00	0.50	0.40	0.00	0.00
Lysine (%)	2480.00	0.30	0.22	0.14	0.07
Méthionine (%)	4500.00	0.00	0.00	0.00	0.00
Macrovitamix, CMV (%)	860.00	2.00	2.00	2.00	2.00
Ferrous Sulfate (%)	600.00	0.00	0.21	0.42	0.63
Liptol ² (%)	1640.00	0.15	0.15	0.15	0.15
Fintox ³ (%)	1045.00	0.15	0.15	0.15	0.15
Total	-	100.00	100.00	100.00	100.00
Calculated nutrients values					
Dry Matter, DM (%)		90.53	90.76	90.88	91.08
Crude Protein, CP (%DM)		20.80	20.49	20.52	20.48
Ether Extract, EE (%DM)		6.87	7.22	7.70	8.33
Crude Fiber, CF (%DM)		4.87	5.23	5.45	5.74
Total Ash (%DM)		6.10	6.61	6.78	7.09
Calcium, Ca (%DM)		1.04	1.07	1.06	1.13
Phosphorus, P (%DM)		0.67	0.69	0.68	0.63
Lysine (%DM)		0.92	0.94	0.93	0.93
Méthionine (%DM)		0.41	0.42	0.43	0.44
Metabolizable energy, ME (kcal/kg DM)		3105.47	3110.00	3165.60	3210.00
[ME/CP] ratio (kcal ME/g CP)		14.93	15.18	15.43	15.67

FCFA¹: Money of the French Community of Africa, 1€ = 655.957 FCFA; LL₀: Control diet containing 0% of *Leuceana leucocephala* leaves meal; LL₇: diet containing 7% of *L. leucocephala* leaves meal in substitution of groundnut cake; LL₁₄: diet containing 14% of *L. leucocephala* leaves meal in substitution of groundnut cake; LL₂₁: diet containing 21% of *L. leucocephala* leaves meal in substitution of groundnut cake; CMV (mineral and vitamin complex, macrovitamix[®]): contain per kg 1400 mg of Manganese, 1200 mg of Zinc, 1400 mg of ferrous, 20 mg Copper, 8 mg molybdenum, 2 mg cobalt, 2.8 mg selenium, 250000 UI vitamin A, 50000 UI vitamin D, 50 mg, 100 mg, 480 mg, 195 mg, 55 mg, 0.6 mg, 290 mg, 50 mg, 175 mg of vitamins B₁, B₂, B₃, B₅, B₆, B₁₂, E, K₃ and C respectively, 27 mg of folic acid, 0.6 mg of biotin and 0.6% of cholin.

Liptol²: antifungal and antibacterial preservative.

Fintox³: preservative absorbing mycotoxins

430 nm as described by AFNOR (1980). The Metabolizable Energy (ME) of experimental diets analyzed, was calculated according to the regression equations of Sibbald *et al.* (1980) cited by Leclercq *et al.* (1984). From the different ingredients analyses results (Ayssiwede *et al.*, 2010b), four approximately isonitrogenous and isocaloric experimental growing chickens diets (LL₀, LL₇, LL₁₄ and LL₂₁) were formulated to contain respectively 0, 7, 14 and 21% of *L. leucocephala* leaves meal in a partial substitution to groundnut cake, major protein source of the diets. So as to detoxify the mimosine, main anti-nutritional factors, the *Leuceana* leaves based diets (LL₇, LL₁₄, LL₂₁) were supplemented according to D'Mello and Acamovic (1982) or Springhall and Ross (1965) with ferrous sulphate at 30 g/kg of leaves meal. The ingredients composition and calculated nutritive value of these four *Leuceana* experimental diets are presented in Table 1.

Indigenous Senegal chicks production and management: The experimental birds were products of indigenous Senegal cockerels and hens and/or crosses between Blue Holland cockerels and local breed hens which were bought from four principal regions (Dakar, Thies, Louga and Kolda) of Senegal. The resulting eggs obtained from their breeding were collected for artificial incubation using an electronic incubator of 252 eggs capacity. After hatching, the one hundred and four (104) indigenous chicks obtained were confined and fed a commercial ordinary starter diet until four (4) weeks of age. The chicks were vaccinated against the Newcastle and Gumboro diseases. Amprolium 20%[®] or Anticox[®] was dissolved in the drinking water for 3 days to prevent avian coccidiosis, Piperazine-citrate[®] or Polystrongle[®] was given for 1-2 days against digestive tract parasites while Neoxyvital[®] or Coliteravet[®] was used for stress prevention. Globally, it have been applied to the birds the

Table 2: Vaccination and disease prophylactic control program applied to growing indigenous senegal chickens

Age of chicks (days)	Diseases	Veterinary products administrated
1	Newcastle disease	Imopest HB1 (oral tract)
1-4	Stress prevention	Néoxyvital (oral tract)
9	Bursitis Infectious (Gumboro)	Hipra-Gumboro-CH80 (oral tract)
9-11	Stress prevention	Néoxyvital (oral tract)
17-20	Avian coccidiosis	Amprolium 20% (oral tract)
21	Newcastle disease	Imopest HB1 (oral tract)
21	Bursitis infectious (Gumboro)	Hipra-Gumboro-CH80 (oral tract)
21-23	Stress prevention	Néoxyvital; Coliteravet (oral tract)
28-29	Digestive tract parasite	Pipérazine citrate+Amin Total (oral)
42-45; 63-65; 91-93	Avian coccidiosis	Anticox, Amprolium 20% (oral tract)
56-57; 84-85	Digestive tract parasite	Polystrongle +Amin Total (oral tract)

prophylactic measures against some common chicken diseases in Senegal according to the vaccination and disease control programme shown in Table 2.

Back ground, experimental design and data collection:

The experiment was undertaken at EISMV-Dakar located in Dakar's department area. Dakar is an ecological peninsula zone of Senegal partially bordered by Atlantic ocean located in 14°40'N and 17°26'W, characterized by a special microclimate with an average moderate temperatures ranging from 19-24°C and an annual rainfall about of 500-600 mm. The trial was carried out from September to December 2010 and involved the 104 previous indigenous Senegal chicks of 4 weeks old. At the end of the 4th week of age, the chicks were individually identified in their wing using a special bird ring and divided according to a completely randomized design into four dietary treatment groups, with 2 replicates of 13 birds for each treatment. The four treatment groups of birds, having substantially identical live body weight, were corresponded each to the four previous *Leuceana* experimental diets: LL₀, LL₇, LL₁₄ and LL₂₁. Data collection started after the four weeks of age, i.e. from 5th to the 17th week of age. For 13 weeks trial, the birds of each treatment groups were fed respectively with the corresponding *Leuceana* experimental diets. During the first five days of the experiment, the birds receiving the *Leuceana* leaves meal based diets (LL₇, LL₁₄ and LL₂₁) were adapted to their feed by a gradual diet transition which consisted in linearly replacing of feed usually distributed by *Leuceana* leaves based diets in the total daily feed offered. The birds were reared on ground litter constituting of wood chips in a semi-open house, with tile cement roof and single slope, where breeding standards (cooling, ventilation, water-troughs, feeders, etc...) were largely respected. They were lit by natural light during the day and by two artificial linear lights of 60 watts capacity at night. The density applied for the treatment groups was 8 birds/m². The feed were distributed to growing chickens twice a day (at 8 h AM and 5 h PM) in linear galvanized feeders while plastic siphon water-troughs of 5 liters capacity were used to provide them water *ad libitum*. During the experiment, the environmental factors in the trial local, certainly

temperature and humidity were regularly measured and recorded using a thermo-hygrometer, as well as zootechnical parameters such as live body weight, feed consumption and chickens mortality. Monitoring of deaths and feed consumption (quantity of feed offered - feed refused) were done on a daily basis while the individual live body weights of birds were undertaken at weekly using an electronic scale SF-400.

Carcass and organs characteristics evaluation: At the end of the trial (17 weeks old), 24 indigenous chickens (either 6 birds/treatment group) were randomly selected, weighed and killed by severing the jugular vein to assess the impact of *Leuceana* leaves meal inclusion in the diets on carcasses and organs characteristics. Chickens slaughtered per dietary treatment were dipped in hot water, defeathered, eviscerated and their carcasses were individually weighed. Then the various organs identified in bird carcasses, especially liver, heart, lungs and spleen were also dissected, weighed separately and recorded per treatment. The yellow coloration of the skin and abdominal fat of carcasses was measured using a similarly technical scoring applied by Kajage *et al.* (2003) or Onibi *et al.* (2008) in which the score varied from 1 to 4 according to the intensity of the yellowing observed (1: no yellow color, 2: light to moderate yellow color, 3: enough to well yellow color and 4: intense to dark yellow color).

Zootechnical parameters and economics results

determination: Data collected on live body weight, feed consumption, mortality, carcass weight, organs weight, yellow scores of the skin and abdominal fat, etc., were entered into the Microsoft Excel table and zootechnical parameters of birds were calculated. The economic appraisal of the experimental diets was made basis, firstly on the local market prices of various ingredients and by-products used (Table 1) during the period of the study to determine the feed price per kg diet and, secondly, on feed cost per kg live body weight or per kg carcass and selling price per kg carcass of chickens. The *Leuceana* leaves meal incorporated in the diets were not bought. But in assessing the feed price/kg experimental diets (LL₀, LL₇, LL₁₄ and LL₂₁) produced, a

flat price of 65 FCFA/kg of sun-dried leaves was determined to take into account the opportunity cost induced by the time spent for their harvesting and processing. The Daily Feed Intake (DFI), Average Daily Weight Gain (ADWG), Feed Conversion Ratio (FCR), Dressing Carcass (DC), Mortality Rate (MR), as well as feed costs, selling price, Gross Margins Food (GMF) and Supplementary Net Margins (SNM) or profits generated per bird or per kg carcass were similarly determined and recorded per dietary treatment according to the formulas below.

$DFI \text{ (g/bird/day)} = [(Quantity \text{ of feed offered} - Quantity \text{ of feed refused})/day \div Number \text{ of birds}]$

$ADWG \text{ (g/day)} = Weight \text{ Gain of the period (g)} \div Length \text{ of the period (days)}$

$FCR = Feed \text{ intake during a period (g)} \div Weight \text{ Gain of the period (g)}$

$DC \text{ (\%)} = (Carcass \text{ weight of the bird} \div Live \text{ body weight of the bird}) * 100$

$MR \text{ (\%)} = [(Initial \text{ number of birds} - Final \text{ number of birds}) \div Initial \text{ number of birds}] * 100$

$Feed \text{ Cost/bird (FCFA)} = FCR * Feed \text{ price/kg diet} * Live \text{ body weight of bird (kg)}$

$Feed \text{ Cost/kg carcass (FCFA)} = [(Feed \text{ Cost/bird)} \div Carcass \text{ weight of bird (kg)}]$

$Selling \text{ price/bird carcass (FCFA)} = Carcass \text{ weight of bird (kg)} * Selling \text{ price/kg carcass}$

$Gross \text{ margins food (GMF)/bird carcass (FCFA)} = (Selling \text{ price/bird carcass}) - (Feed \text{ Cost/bird})$

$Gross \text{ margins food (GMF)/kg carcass (FCFA)} = (Selling \text{ price/kg carcass}) - (Feed \text{ Cost/kg carcass})$

$SNM/kg \text{ carcass (FCFA)} = (GMF/kg \text{ carcass/group}) - (GMF/kg \text{ carcass of control group})$

Treatment and statistical analyses: Data collected on birds performances and economics evaluation per dietary treatment were recorded and treated with Microsoft Excel table. They were then subjected to one factor Analysis of Variance (ANOVA) at 5% level ($p < 0.05$) using the Statistical Package for Social Science (SPSS) software. When ANOVA analysis test showed significant dietary treatments effects between the results, means were completely separated using Duncan's Multiple Range Test of the same statistical software.

RESULTS

Ambiance parameters and nutrients composition of *Leuceana* experimental diets: Although the experiment was started (September to December) at the end of the rainy season, corresponding to the announcement of fresh period beginning, the ambient temperature recorded in the breeding local of birds throughout the experiment was relatively high ranging from 28.3-33.7°C, either an average of 29.49°C. The air humidity in the local, ranged between 27 and 71% with an average about of 59.3%. The nutrients composition and calculated Metabolizable Energy (ME) content of *Leuceana* experimental diets determined was reported in Table 3. All experimental diets were isonitrogenous. The *Leuceana* leaves meal inclusion had significantly ($p < 0.05$) and proportionally increased the Ether Extract (EE), Crude Fiber (CF), ash and calcium contents in the diets while those of Nitrogen Free Extract (NFE) and ME were decreased. However, except for LL₂₁ dietary treatment which had a relatively significant lower [ME/CP] ratio (16.95), the ME content difference between experimental diets did not affect these ratio values in LL₇ and LL₁₄ (17.42) diets compared to the control (17.70).

Growth performances, health status or mortality rate of indigenous Senegal chickens: The impacts of *Leuceana* leaves meal inclusion in the diets on Live Body Weight (LBW) development of growing indigenous Senegal chickens according to age are illustrated in Fig. 1. From the 4th to the 11th week of age, the LBW of birds in all dietary treatments increased similarly, with a significantly ($p < 0.05$) advantage in birds fed LL₇ and LL₁₄ diets. From the 12th week until the end of the experiment (17 weeks old), the significant LBW advantage was only maintained in birds fed diet containing 7% of *Leuceana* leaves meal. The LBW of birds fed the LL₁₄ diet was higher but not significantly different to that of birds in other treatments LL₀ and LL₂₁. Overall, the birds in LL₇ treatment group recorded the highest LBW (1166.48 g), followed by those of LL₁₄ treatment (905.02 g). The birds in control and LL₂₁ treatment groups had the lowest LBW, 864.04 g and 887.16 g respectively at the end of the trial. At 4, 8, 12, 16 and 17 weeks old, the global LBW mean recorded for all indigenous birds in the trial were respectively 161.78 g, 407.78 g, 640.49 g, 885.95 g and 959.66 g (Table 4). The results of *Leuceana* leaves meal inclusion on Average Daily Weight Gain (ADWG), Daily Feed Intake (DFI), Feed Conversion Ratio (FCR) and mortality rate of growing indigenous Senegal chickens are summarized in Table 4. From one day to 4 weeks, the ADWG of birds were relatively low and were not significantly different between treatment groups. From 5 to 9 weeks old, the ADWG increased according to age and were significantly higher in birds fed diets containing 7 and 14% of *Leuceana* leaves meal

Table 3: Nutrients composition of *Leuceana Leucocephala* (LL) experimental diets for growing indigenous senegal chickens

Analyzed nutrients values	Dietary treatments			
	LL ₀	LL ₇	LL ₁₄	LL ₂₁
Number of samples	03	03	03	03
Dry matter, DM (%)	90.36±0.04 ^a	90.55±0.06 ^{ab}	90.77±0.10 ^b	90.47±0.25 ^a
Crude Protein, CP (% DM)	20.41±0.46	20.95±0.03	20.42±0.15	20.90±0.20
Ether extract, EE (% DM)	4.50±0.25 ^a	6.78±0.19 ^b	6.85±0.05 ^b	7.34±0.11 ^c
Crude fiber, CF (% DM)	3.40±0.04 ^a	4.13±0.17 ^b	5.18±0.05 ^c	5.40±0.03 ^d
Nitrogen Free Extract, NFE (% DM)	64.70±0.29 ^d	60.68±0.40 ^c	60.02±0.41 ^b	58.27±0.16 ^a
Total Ash (% DM)	7.02±0.12 ^a	7.44±0.05 ^b	7.53±0.30 ^b	8.08±0.18 ^c
Calcium, Ca (% DM)	0.85±0.02 ^a	0.90±0.05 ^{ab}	0.91±0.02 ^b	0.99±0.04 ^c
Phosphorus, P (% DM)	0.60±0.02	0.62±0.10	0.72±0.08	0.61±0.03
Metabolizable energy, ME ¹ (kcal/kg DM)	3610.00±15.0 ^b	3650.00±7.0 ^c	3557.00±6.0 ^a	3542.00±11.0 ^a
ME/Protein Ratio (kcal/g)	17.70±0.47 ^b	17.42±0.02 ^{ab}	17.42±0.16 ^{ab}	16.95±0.10 ^a

^{a,b,c,d}Means within rows with different superscripts are significantly different at 5% level (p<0.05), LL₀: Control diet containing 0% of *Leuceana leucocephala* leaves meal; LL₇: diet containing 7% of *L. leucocephala* leaves meal in substitution of groundnut cake; LL₁₄: diet containing 14% of *L. leucocephala* leaves meal in substitution of groundnut cake; LL₂₁: diet containing 21% of *L. leucocephala* leaves meal in substitution of groundnut cake.

¹ME (kcal/kg DM) = 3951 + 54.4*EE - 40.8*Ash - 88.7*CF, in (Leclercq et al., 1984)

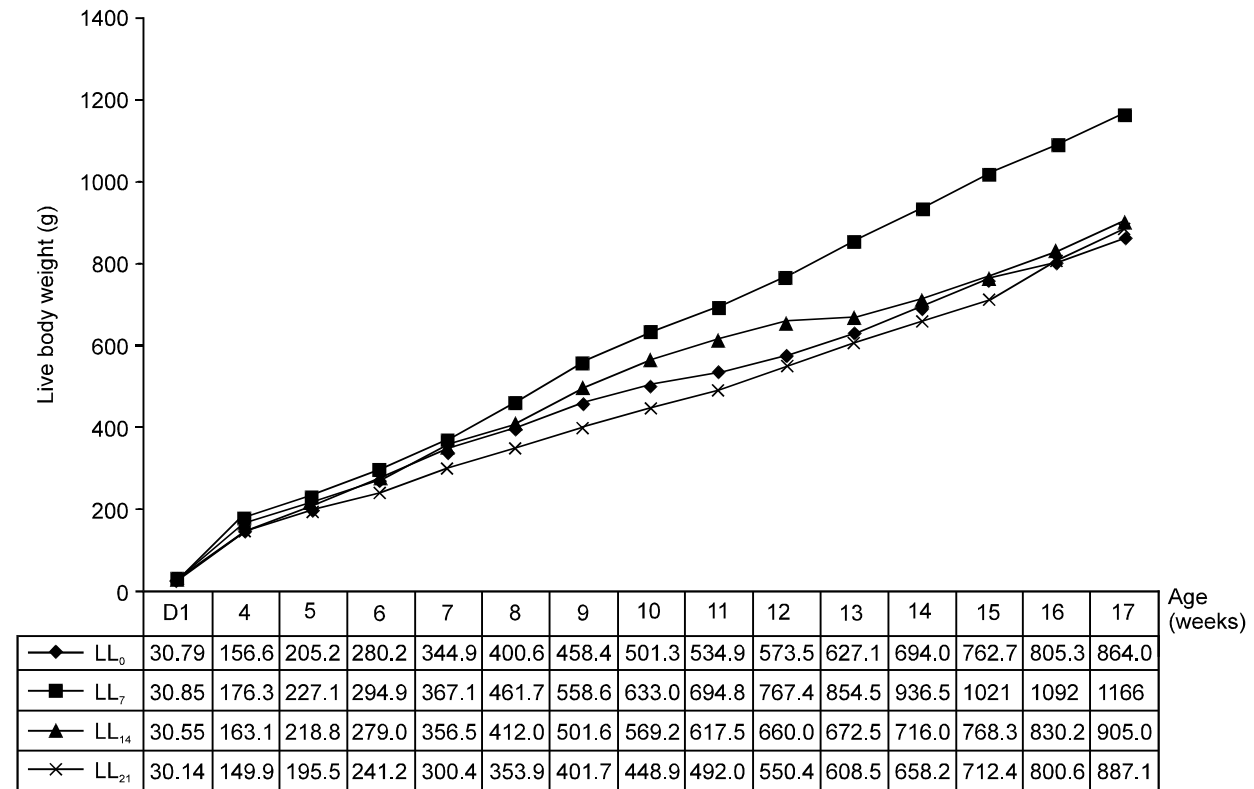


Fig. 1: Evolution of live body weight of growing indigenous Senegal chickens fed diets containing respectively 0 (LL₀), 7 (LL₇) 14 (LL₁₄) and 21% (LL₂₁) of *L. leucocephala* leaves meal according to age

compared to other treatment groups. From 10 to 17 weeks of age, the *Leuceana* leaves meal inclusion in the diets significantly improved (p<0.05) the ADWG of growing indigenous chickens, particularly in birds fed LL₇ and LL₂₁ diets compared to others. For all the trial period, *Leuceana* leaves meal inclusion significantly increased the ADWG of chickens in LL₇ dietary treatment. The ADWG recorded were 7.77, 10.88, 8.15

and 8.10 g/day respectively for birds in LL₀, LL₇, LL₁₄ and LL₂₁ dietary treatment groups; the global ADWG mean was 8.76 g/day. The increasing rate of ADWG were 40%, 4.90% and 4.25% respectively in birds fed LL₇, LL₁₄ and LL₂₁ diets compared to the control treatment birds which showed the lowest ADWG. At one, two, three and four months of age, the global ADWG of all indigenous chickens in this trial were respectively 3.75, 9.13, 7.58

Table 4: Effects of various levels of *Leuceana leucocephala* leaves meal inclusion in the diets on growth performances and mortality of indigenous senegal chickens

Chickens parameters	Dietary treatments					Global mean	SEM	p-value
	LL ₀	LL ₇	LL ₁₄	LL ₂₁				
Initial number of birds/treatment	26.00	26.00	26.00	26.00	104.00	-	-	
Body weight at day one, D ₁ (g)	30.78±3.37	30.85±3.98	30.56±4.63	30.14±3.48	30.58±3.86	0.38	0.915	
Body weight at 4 weeks old (g)	156.59±44.25	176.38±32.95	163.50±50.28	149.98±43.27	161.78±43.51	4.37	0.163	
Body weight at 8 weeks old (g)	400.61±129.03 ^{ab}	461.77±122.23 ^b	412.02±137.56 ^{ab}	353.98±128.54 ^a	407.78±133.26	13.39	0.035	
Body weight at 12 weeks old (g)	573.57±162.12 ^a	767.44±201.03 ^b	660.06±213.85 ^a	550.48±161.69 ^a	640.49±203.23	20.42	0.000	
Body weight at 16 weeks old (g)	805.33±223.50 ^a	1092.87±196.13 ^b	830.24±216.40 ^a	800.66±200.64 ^a	885.95±240.60	24.18	0.000	
Body weight at 17 weeks old (g)	864.04±233.86 ^a	1166.48±204.53 ^b	905.02±224.34 ^a	887.16±225.10 ^a	959.66±251.55	45.02	0.000	
ADWG 0-4 weeks old (g/day)	3.60±1.18	4.16±0.84	3.79±1.36	3.42±1.14	3.75±1.16	0.12	0.130	
ADWG 5-9 weeks old (g/bird/day)	8.62±3.22 ^{ab}	10.92±3.65 ^c	9.67±4.35 ^{bc}	7.19±3.36 ^a	9.13±3.88	0.39	0.004	
ADWG 10-13 weeks old (g/day)	6.02±2.01 ^a	10.56±1.79 ^c	6.11±2.61 ^a	7.38±2.31 ^b	7.58±2.86	0.29	0.000	
ADWG 14-17 weeks old (g/day)	8.46±3.10 ^a	11.14±3.62 ^b	8.30±2.90 ^a	9.95±2.91 ^{ab}	9.50±3.32	0.33	0.005	
ADWG 5-17 weeks old (g/day)	7.77±2.26 ^a	10.88±1.98 ^b	8.15±2.25 ^a	8.10±2.19 ^a	8.76±2.49	0.25	0.000	
DFI 5-9 weeks old (g/bird/day)	38.46±0.24 ^a	43.80±6.90 ^b	40.76±11.00 ^{ab}	37.78±3.56 ^a	40.27±7.11	0.72	0.010	
DFI 10-13 weeks old (g/bird/day)	37.86±3.29 ^a	50.62±0.76 ^c	39.16±5.52 ^a	42.13±1.76 ^b	42.61±6.02	0.60	0.000	
DFI 14-17 weeks old (g/bird/day)	43.63±6.15 ^b	60.58±3.67 ^c	41.19±1.72 ^a	56.07±0.05 ^c	50.61±8.98	0.90	0.000	
DFI 5-17 weeks old (g/bird/day)	39.86±2.81 ^a	51.06±1.29 ^c	40.39±6.46 ^a	44.75±1.90 ^b	44.17±5.83	0.58	0.000	
FCR 5-9 weeks old	5.57±1.77 ^{ab}	4.67±1.19 ^a	5.59±2.45 ^{bc}	6.77±2.97 ^d	5.64±2.30	0.23	0.011	
FCR 10-13 weeks old	8.53±3.24 ^a	5.79±1.48 ^b	7.55±2.23 ^{bc}	6.75±3.58 ^{bc}	7.11±2.88	0.29	0.006	
FCR 14-17 weeks old	7.39±2.55 ^b	6.37±1.78 ^{ab}	5.85±1.98 ^a	6.89±2.24 ^{ab}	6.61±2.19	0.22	0.081	
FCR 5-17 weeks old	7.04±2.10 ^a	5.54±0.96 ^b	6.27±1.41 ^{ab}	6.80±2.16 ^a	6.39±1.78	0.18	0.013	
Final number of birds/treatment	23.00	26.00	25.00	25.00	99.00	-	-	
Mortality rate (%)	11.54 ^c	0.00 ^a	3.85 ^b	3.85 ^b	4.81	1.08	0.000	

^{a,b,c}Means within rows with different superscripts are significantly different at 5% level (p<0.05). LL₀: Control diet containing 0% of *Leuceana leucocephala* leaves meal; LL₇: diet containing 7% of *L. leucocephala* leaves meal in substitution of groundnut cake; LL₁₄: diet containing 14% of *L. leucocephala* leaves meal in substitution of groundnut cake; LL₂₁: diet containing 21% of *L. leucocephala* leaves meal in substitution of groundnut cake. ADWG: Average daily weight gain; DFI: Daily feed intake; FCR: Feed Conversion Ratio

and 9.50 g/day. The *Leuceana* leaves meal inclusion in the diets significantly increased daily feed intake (DFI), particularly in birds fed LL₇ and LL₁₄ diets from 5 to 9 weeks old and in birds fed LL₇ and LL₂₁ from 10 to 17 weeks age compared to others. From the 5th until the end of the trial, the DFI were significantly higher (p<0.05) for birds in LL₇ (51.06 g) followed by those in LL₂₁ (44.75 g/bird) than those of LL₀ (39.86 g) and LL₁₄ (40.4 g/bird) treatment groups. The increasing rate of DFI were respectively 28.1%, 1.35% and 12.27% for LL₇, LL₁₄ and LL₂₁ dietary treatments compared to the DFI of birds in control treatment (LL₀).

From the 5th to the 9th week of age, the Feed Conversion Ratio (FCR) significantly increased with the *Leuceana* leaves meal inclusion in the diets. From 10 to 17 weeks old, the FCR in birds fed *Leuceana* leaves based diets increased without being significantly different to that of the control. For all the trial period, the inclusion of *Leuceana* leaves meal had no significant adverse effects on FCR of growing indigenous Senegal chickens in different dietary treatments. It had significantly reduced (p<0.05) the FCR in birds fed LL₇ (5.54) and LL₁₄ (6.27) compared to the control (LL₀) and LL₂₁ treatments birds which had similar FCR of 7.04 and 6.80 respectively; the global FCR mean was 6.39. The decreasing rate of FCR were 21.42%, 10.92% and 3.55% in birds fed diets containing respectively 7, 14 and 21% of *Leuceana* leaves meal compared to the control birds. From 5 to 17 weeks of age, the *Leuceana* leaves meal inclusion in the diets had no adverse effect on health and mortality of indigenous chickens. It would rather reduce the mortality rate of birds compared to the

control group. During the 13 weeks of experimentation, a total of five (5) mortalities (4.81%) were recorded. The first (3.85%) and the second (3.85%) were occurred at 6 and 7 weeks old respectively in birds receiving LL₁₄ and LL₂₁ dietary treatments. Their autopsy revealed a great suspicion of chicks' ascites syndrome which original causes are not well known. Any mortality was not recorded among indigenous chickens in LL₇ dietary treatment group. The three (3) other deaths (11.54%) were recorded in birds fed the control diet (LL₀) and were caused by the respiratory tract parasites, *Syngamus trachei*. Indeed, before dying, the birds had often yawned and lesions and eggs of these parasites were observed in the lungs and in trachea of chickens in autopsy (Fig. 2).

Carcass and organs characteristics and economics results of indigenous Senegal chickens: The results related to the effects of *Leuceana* leaves meal inclusion in the diets on carcass and organs characteristics and economic margins of growing indigenous Senegal chickens are summarized in Table 5. The inclusion of *Leuceana* leaves meal significantly increased (p<0.05) carcass weight in birds fed LL₇ diet compared to others. It had no adverse effect on dressing carcass, liver weight, heart weight, lungs and spleen weights which were all increased in birds fed *Leuceana* leaves based diets without being significantly different between treatments compared to the control group. But, taken together, the weight of all these organs (liver, heart, lungs and spleen) was significantly increased (p<0.05) with the *Leuceana* leaves meal inclusion in the diets.



Fig. 2: Lesions in lungs (left and medium pictures) and eggs in trachea (right picture) of *Syngamus trachei*, a respiratory parasite tract observed in growing indigenous Senegal chickens fed the control diet

Table 5: Effects of various levels of *Leuceana leucocephala* leaves meal inclusion in the diets on carcass and organs characteristics and economics results of growing indigenous Senegal chickens

Parameters	Dietary treatments				Global mean	SEM	p-value
	LL ₀	LL ₇	LL ₁₄	LL ₂₁			
Birds killed/treatment	6.00	6.00	6.00	6.00	6.00	-	-
Carcass and organ characteristics							
Average body weight of bird (g)	832.40±152.76 ^a	1129.40±70.98 ^b	867.40±70.30 ^a	905.00±60.35 ^a	933.55±148.10	33.11	0.001
Average Carcass weight (g)	731.80±116.70 ^a	954.60±67.20 ^b	743.80±75.17 ^a	788.20±77.69 ^a	804.60±120.98	27.05	0.003
Dressing (%)	88.19±2.39	84.50±1.26	85.64±2.02	86.97±3.67	86.33±2.69	0.60	0.145
Liver weight, LW (g)	19.40±2.19	27.00±6.12	24.80±6.42	26.00±2.12	24.30±5.25	1.18	0.087
Heart weight, HW (g)	5.40±1.14	6.20±0.84	4.80±0.44	6.00±0.71	5.60±0.94	0.21	0.064
Lungs +Spleen weight, LSW (g)	9.60±3.21	13.00±4.18	9.60±1.82	12.80±1.48	11.25±3.14	0.70	0.130
LW + HW + LSW (g)	34.40±5.50 ^a	46.20±5.98 ^b	39.20±5.93 ^{ab}	44.80±3.96 ^b	41.15±6.92	1.55	0.012
(LW + HW + LSW)/ABW ratio (%)	4.15±0.11 ^a	4.09±0.41 ^a	4.53±0.72 ^{ab}	4.95±0.32 ^b	4.43±0.54	0.12	0.026
Yellow color score of skin	1.16±0.44 ^a	1.40±0.54 ^a	1.80±0.83 ^a	3.16±1.30 ^b	1.90±1.12	0.25	0.008
Yellow color score of abdominal fat	1.16±0.44 ^a	1.60±0.54 ^{ab}	2.20±0.84 ^{ab}	3.34±0.70 ^b	2.09±0.92	0.21	0.003
Economic results							
Experimental feed price (FCFA)/kg	176.00	182.00	185.00	188.00	183.00	-	-
Feed cost/bird, 5-17 weeks old (FCFA)	1033±190	1139±72	1009±82	1157±77	1084±128	28.0	0.147
Feed cost/kg carcass (FCFA)	1408±38 ^b	1193±18 ^a	1359±32 ^b	1472±60 ^b	1358±112	25.0	0.000
Selling price/kg carcass (FCFA)	2000.00	2000.00	2000.00	2000.00	2000.00	-	-
Selling price/bird carcass (FCFA)	1464±233 ^a	1909±134 ^b	1488±150 ^a	1576±155 ^a	1609±242	54.0	0.003
Gross margin food/bird (FCFA)	431±48 ^a	770±66 ^b	478±70 ^a	419±87 ^a	525±160	36.0	0.000
Gross margin food/kg carcass (FCFA)	592±38 ^b	807±18 ^a	641±32 ^b	528±60 ^a	642±112	25.0	0.000
SNM/kg carcass ² (FCFA)	0.00 ^{ab}	214±49 ^a	48±49 ^b	-64±91 ^a	50±118	26.0	0.000

^{a,b,c,d}Means within rows with different superscripts are significantly different at 5% level (p<0.05). LL₀: Control diet containing 0% of *Leuceana leucocephala* leaves meal; LL₇: diet containing 7% of *L. leucocephala* leaves meal in substitution of groundnut cake; LL₁₄: diet containing 14% of *L. leucocephala* leaves meal in substitution of groundnut cake; LL₂₁: diet containing 21% of *L. leucocephala* leaves meal in substitution of groundnut cake. FCFA¹: Money of the French Community of Africa, 1€ = 655.957 FCFA.

SNM²: Supplementary Net Margin generated in comparison to the control diet LL₀

This increasing of organs weight was not proportional to the live body weight of chickens, the ratio [organs weight/LBW] was significantly increased (p<0.05) with the leaves meal inclusion compared to the control. Moreover, the incorporation of *Leuceana* leaves meal in the diets had produced significantly and proportionally yellow coloration of the skin (Fig. 3) and abdominal fat (Fig. 4) of carcasses in traditional chickens compared to the control treatment. As for economic results, the price per kilogram of feed had increased with the level of *Leuceana* leaves meal inclusion. It was evaluated at 176, 182, 185 and 188 FCFA/kg respectively for LL₀, LL₇, LL₁₄ and LL₂₁ diets. The feed cost per kg carcass obtained was significantly lower in birds receiving LL₇ diet than those of other treatment groups. Birds fed the



Fig. 3: Normal color (left picture) and intense yellow color (right picture) of skin of carcasses from growing indigenous Senegal chickens fed diets containing respectively 0% (LL₀) and 21% (LL₂₁) of *Leuceana leucocephala* leaves meal

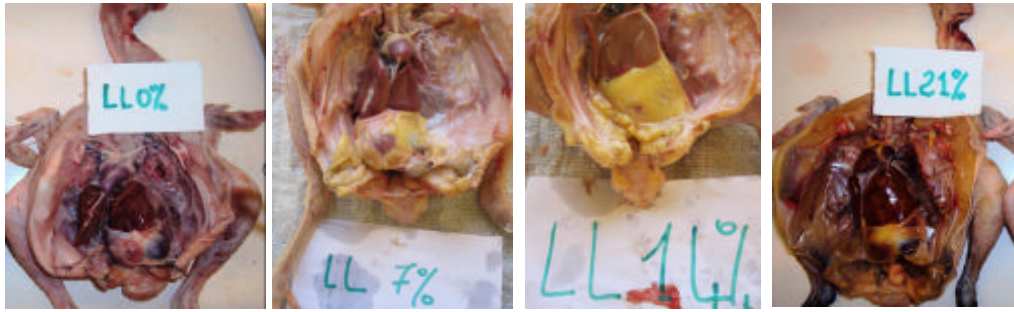


Fig. 4: Normal, yellow, intense yellow and dark yellow color of abdominal fat of carcasses (from left to right pictures) from growing indigenous Senegal chickens fed diet containing respectively 0% (LL₀), 7% (LL₇), 14% (LL₁₄) and 21% (LL₂₁) of *Leuceana leucocephala* leaves meal

diet containing 21% of *Leuceana* leaves had recorded the highest feed cost (1472 FCFA/kg carcass) while the lowest (1193 FCFA/kg carcass) was obtained in LL₇ dietary treatment, followed by LL₁₄ (1359 FCFA/kg carcass) and LL₀ (1408 FCFA/kg carcass) treatments. For a selling price of 2000 FCFA/kg carcass, the Gross Margin Food (GMF)/kg carcass generated per dietary treatment was significantly higher for birds in LL₇ diet (807 FCFA/kg carcass), followed by LL₁₄ (641 FCFA/kg carcass) and LL₀ (592 FCFA/kg carcass) treatments. Birds in LL₂₁ dietary treatment had recorded the lowest GMF value (528 FCFA/kg carcass). Compared to the control dietary treatment, the LL₇ and LL₁₄ treatments had allowed achieving respectively an additional net margin of 214 and 48 FCFA/kg carcass while the LL₂₁ treatment had resulted in a loss of 64 FCFA/kg carcass (Table 5). From these results, it can be noted that apart from the dark yellowing of abdominal fat, the inclusion of *Leuceana* leaves meal up to 21% in the diet, had no adverse effect on carcass and organs characteristics of growing indigenous Senegal chickens and was more economically profitable at the rate of 7 and 14% inclusion in comparison to the control.

DISCUSSION

The temperature recorded (28.3-33.7°C) in this study was higher than that (19-27°C) recommended by Bordas and Minvielle (1997), Rekhis (2002) and ITAVI (2003), but similar to that obtained (26.7-33.1°C) in Senegal by Bello (2010). Although the humidity (27-71%) was in agreement with that usually recommended (40-70%), it was lower than that measured (51-84%) by Bello (2010). This relatively low humidity value recorded could be explained by the fact that Bello (2010) had undertaken his trial from July to October which corresponded to the rainy season, a particularly hot and wet period in Senegal. The significantly higher Ether Extract (EE) content recorded in *Leuceana* leaves based diets than the control may be explained by the increasing contribution of ground nut oil in the diets with the incorporation of *Leuceana* leaves meal. But, these latter

being richer in Crude Fiber (CF) and less energetic (Ayssiwede *et al.*, 2010b), their gradual inclusion had significantly increased the CF content and consequently decreased the Metabolizable Energy (ME) content of the diets despite the ground nut oil inclusion. The significant reduction of [ME/CP] ratio, particularly in LL₂₁ diet, would probably due to its low ME content.

For all experimental period (5-17 weeks of age), the inclusion of *L. leucocephala* leaves meal in the diets had no significant adverse effects on Live Body Weight (LBW), Average Daily Weight Gain (ADWG), Daily Feed Intake (DFI), Feed Conversion Ratio (FCR) and mortality of growing indigenous Senegal chickens compared to the controls. It had significantly improved ($p < 0.05$) the LBW, ADWG, DFI and FCR of birds, particularly in LL₇, and to a lesser extent in LL₁₄ dietary treatments compared to others. These results are supported by the findings of Ross and Springhall (1963), Springhall and Ross (1965) and D'Mello and Acamovic (1982) in which they had demonstrated the improvement of ADWG, DFI and FCR by incorporating in the broiler or laying chickens' diets, 15-20% of *Leuceana* leaves meal treated with ferrous sulphate. Apart from the significant decrease of ADWG and FCR recorded by Pojun *et al.* (1989) and Hussain *et al.* (1991) at 20% inclusion of *Leuceana* leaves meal in the diets of broiler chickens; our results are similar to those of these least authors. Moreover, they are confirmed those previously recorded by Ayssiwede *et al.* (2010b) in which the inclusion of *Leuceana* leaves meal up to 21% in the diet of adults indigenous Senegal chickens had no adverse effect on DFI, ADWG and FCR and had significantly improved the apparent coefficients of nutrients and ME utilization, certainly in birds fed diets containing 7 and 14% of these leaves meal. Similar results were also obtained by Kakengi *et al.* (2007), Tendonkeng *et al.* (2008) and Olugbemi *et al.* (2010a) with 6-20% inclusion of *Moringa* leaves, Ravindran *et al.* (1983) with cassava leaves meal, in which the DFI had significantly increased in broilers and laying birds. However, our results are in disagreement with those obtained by including 15-30%

of *Leuceana* leaves (Ter Meulen *et al.*, 1984; D'Mello *et al.*, 1987; Satyanarayana *et al.*, 1987; Bhatnagar *et al.*, 1996; Mutayoba *et al.*, 2003; Atawodi *et al.*, 2008; Onibi *et al.*, 2008) or 5-20% of *Gliricidia sepium* leaves meal (Osei *et al.*, 1990; Odunsi *et al.*, 2002) in the diets of broiler chickens and laying hens. It is the same with the findings of Gupta *et al.* (1970) for 10% inclusion of *Cassia tora* leaves, Suliman *et al.* (1987) for 5% of fermented *C. tora* leaves, Ravindran *et al.* (1986), Iheukwumere *et al.* (2008) and Onibi *et al.* (2008) for 10-20% inclusion of cassava (*Manihot esculenta*) leaves meal in the diets, in which they observed a significant decrease in chickens growth performances. The low performances obtained with *Leuceana* (Ter Meulen *et al.*, 1984; D'Mello, 1992; Bhatnagar *et al.*, 1996; Atawodi *et al.*, 2008), *Gliricidia* (Odunsi *et al.*, 2002) or *Cassia* leaves meal (Gupta *et al.*, 1970) were attributed by authors to anti-nutritional factors, especially mimosine, tannins or nitrates-nitrites. The performances improvement noted in our study could arise then from the fact that the *Leuceana* leaves meal used were treated with ferrous sulphate as doing D'Mello and Acamovic (1982) or Springhall and Ross (1965) to neutralize mimosine, the main toxic factor of *L. leucocephala*, unlike to the studies of these previous authors. The low DFI observed in birds fed LL₁₄ and LL₂₁ diets compared to LL₇ diet may be caused by the high crude fiber content or palatability of the diets. According to Ash and Petaia (1992) and Omekam (1994), chickens did not eat voluntarily fresh or dried legumes leaves and could often showed a decline in their performances, particularly DFI due to the high fiber content or lack of appetite when fed diet containing high level of leaves meal.

The Live Body Weight (LBW) means of 162 g (150-176 g), 408 g (354-462 g), 640.5 g (550-767 g) and 886 g (801-1093 g) globally recorded respectively at 4, 8, 12 and 16 weeks old for indigenous chickens are consistent with those obtained in station in Cameroon and Congo (119-212, 384-511, 467-622, 782-1102 g) by Fotsa (2008) and Akouango *et al.* (2010), in Senegal (158-185, 525-617, 718-847 and 954-1040 g) by Ali (2001) and in Nigeria (191, 480, 821 and 1035 g) by Adebajo and Oluyemi (1981). The relatively higher LBW (800-838 g and 1677-1724 g) were found in Kenya respectively at 12 and 19 weeks of age by Ndegwa *et al.* (2001). However, our LBW in this study were higher than those obtained at the same ages (90-146, 242-358, 381-588 and 541-847 g) in Senegal (Missohou *et al.*, 2002; Bello, 2010), Tanzania (Msoffe *et al.*, 2004), Nigeria (Adedokun and Sonaiya, 2001; Fayeye *et al.*, 2005) and in Ethiopia (Halima *et al.*, 2007b). The LBW mean of 960 g (864-1166 g) obtained is higher than that (720-912 g) found in Senegal (Bello, 2010) and in Burkina Faso (Pousga *et al.*, 2006) at 17 weeks old and in Sudan (600-783 g) at 18 weeks of age by Mohammed

et al. (2005). The Average Daily Weight Gain (ADWG) mean, 8.76 g/day (7.77-10.88) obtained in traditional chickens in our study is in agreement with those recorded (7-12 g/day) in Nigeria (Adebajo and Oluyemi, 1981) and in Cameroon (Fotsa, 2008). However, it remained higher than those (5-9 g/day) found by most authors (Buldgen *et al.*, 1992; Adedokun and Sonaiya, 2001; Ali, 2001; Msoffe *et al.*, 2004; Pousga *et al.*, 2006; Halima *et al.*, 2007b; Akouango *et al.*, 2010; Bello, 2010). These variations could be explained not only by feeding or breeding conditions, geographical or seasonal differences of areas, but also by age, sex, diversity or genetic variability existence in the indigenous African chickens' population. Our experiment birds containing some crosses from blue Holland cockerels and local hen, the ADWG was often higher in crosses or males' chickens than in pure local breeds or females, lower in scavenging birds than housed and regularly fed birds (Buldgen *et al.*, 1992; Pousga *et al.*, 2006; Halima, 2007). It was also shown that indigenous chickens with such fast fledge grow slower than slow ones fledge (Fotsa, 2008).

The Daily Feed Intake (DFI) mean 44.2 g/jour (39.8-51 g/jour) obtained from the 5th until the end of the trial (17 weeks old) is consistent with those recorded by Buldgen *et al.* (1992), Fall and Buldgen (1996), Pousga *et al.* (2006) and Halima *et al.* (2007b). It remains relatively higher than that obtained (34-40 g/day) by Bello (2010) and lower than those found by Ali (2001) and Ayssiwede *et al.* (2010a and 2010b). Indeed, the DFI of village chickens from 0-24 weeks of age was ranged from 5 to 98 g/day (Buldgen *et al.*, 1992; Halima *et al.*, 2007b) while from 6 to 17 weeks of age; it was about of 36-48 g/day (Fall and Buldgen, 1996; Pousga *et al.*, 2006; Halima *et al.*, 2007b). The DFI varies according to age, ambient temperature, nature and energy level of the diets. In adults village chickens, it was higher, 62-72 g of medium to high-energy (2600-3000 kcal ME/kg DM) diets and 88 g/day of low-energy (2400 kcal ME/kg DM) diet with a Feed Conversion Ratio (FCR) respectively about of 5.6-7.4 and 12.8 (Ali, 2001; Ayssiwede *et al.*, 2010a and 2010b). The FCR recorded 6.39 (5.54-7.04) in this study is globally similar to those obtained by most authors (Buldgen *et al.*, 1992; Pousga *et al.*, 2006; Ayssiwede *et al.*, 2010a and 2010b; Bello, 2010; Ossebi, 2010). But it is relatively higher than that (3.9-5) recorded by Fotsa (2008) in Cameroon, and lower than those found (7.4-12.8) by Ali (2001) in Senegal and Halima *et al.* (2007b) in Ethiopia by providing ordinary feed to these birds.

The *Leuceana* leaves meal inclusion in the diets had significantly improved carcass weight in birds fed LL₇ diet. Despite the significantly improvement of [whole organs weight/LBW] ratio noted with the *Leuceana* leaves meal inclusion, this least globally had no adverse effect on dressing carcass, liver weight, heart weight,

lungs and spleen weight compared to the control. Dressing carcass obtained 86.3% (84.5-88.2%) in this study is higher than those obtained in Senegal (67-79%) by Buldgen *et al.* (1992), Ali (2001) and Bello (2010), in Congo (71.5-78.4%) by Akouango *et al.* (2010), in Burkina (66-80%) by Kondombo (2005) and in Nigeria, Ethiopia and Cameroon (54-68.5%) by Adebajo and Oluyemi (1981), Joseph *et al.* (1992), Halima *et al.* (2007b) and Fotsa (2008). The liver weight 24.3 g (19-27 g), heart weight 5.6 g (4.8-6.2 g), lungs and spleen weight 11.25 g (9.6-13 g) obtained in this study, are higher than those respectively (21.80 g, 3.75 g, 6.55 g) recorded by Bello (2010) at 17 weeks old and by Fotsa (2008) at 16 weeks of age. These variations could be due to age or live body weight, sex of birds, type of carcass, chicken ecotypes or seasons. Cockerels often having higher Dressing Carcass (DC) than hens, the prevalence of male chickens in groups can increase the DC mean and reciprocally. Also, organs development is often proportional to live body weight or age. Kondombo (2005) had shown that the DC of traditional chickens slaughtered in dry season was higher than that of birds killed in rainy season. Moreover, *Leuceana* leaves meal inclusion had produced significantly and proportionally yellow coloration of skin and abdominal fat of carcasses of growing traditional chickens compared to the control treatment. According to the ecotypes of indigenous chickens, white (44%), pink (22%), yellow (28%) or black (7%) pigments of skin of carcasses were reported by Moula *et al.* (2009) in Algeria. However, the yellowing of the skin, abdominal fat or egg yolk may be influenced by the diet composition in xanthophylls pigments (Talpin *et al.*, 1981; D'Mello *et al.*, 1987; Surai *et al.*, 2001; Agbede and Aletor, 2003). The yellowing observed in our study indicates that *Leuceana* leaves are rich in pro-vitamins A or carotenoids pigments which were efficiently absorbed and utilized by the birds. This observation is supported by the findings of Talpin *et al.* (1981), Quang Hien and Duc Hung (1998) or Onibi *et al.* (2008), in which the *Leuceana* or *cassava* leaves meal inclusion about 6-20% in the diet of broiler or laying chickens had significantly produced yellowing of the skin, shanks, abdominal fat and egg yolk. Similar results were recorded by Kaijage *et al.* (2003), Bello (2010) and Olugbemi *et al.* (2010a and 2010b) with the inclusion of 10-24% of *Moringa* leaves meal in the diets of laying hens, indigenous or broiler chickens.

Unlike to Onibi *et al.* (2008), our feed price/kg diet, increased with the inclusion level of *Leuceana* leaves meal in the diets, ranging from 176 FCFA/kg (control diet) to 188 FCFA/kg (LL₂₁ diet). This controversy could arise from the fact that Onibi *et al.* (2008) had excluded the opportunity cost of harvesting and processing of leaves. However this price was lower than that practiced (240-280 FCFA/kg) in Senegalese markets for the industrial poultry feed. For all the experimental period, except the LL₇ treatment which had the significantly

lowest feed cost (1193 FCFA/kg carcass), followed by LL₁₄ (1359 FCFA/kg carcass) and control (1408 FCFA/kg carcass), the feed cost was significantly higher, 1472 FCFA/kg carcass in LL₂₁ treatment group. As a result, Gross Margin Food (GMF)/kg carcass was significantly higher in LL₇ treatment (807 FCFA) and decreased with the rate of *Leuceana* leaves meal in the diets, 641 and 528 FCFA/kg carcass respectively in LL₁₄ and LL₂₁ while that of the control was 592 FCFA/kg carcass. Thus, compared to the control, the LL₇ and LL₁₄ dietary treatments had allowed realizing respectively a Supplementary Net Margin (SNM) of 214 and 48 FCFA/kg carcass while the LL₂₁ treatment had resulted a loss of 64 FCFA/kg carcass. These results are in line with those obtained by Quang Hien and Duc Hung (1998) and Quang Hien and Thi Inh (1998) in which the inclusion of 5-6% of *Leuceana* leaves treated with ferrous sulphate in the diets had significantly reduced the feed costs/kg LBWG or egg produced respectively in broiler and laying chickens. Although our results are corroborated those obtained by Bello (2010), these additional net margins were remained lower than those found by this author at 8 and 16% inclusion of *Moringa oleifera* leaves meal in the diets of these birds. They are also supported by the findings of Onibi *et al.* (2008) in Nigeria or Tendongkeng *et al.* (2008) in Cameroon in which the feed costs/kg LBWG of broiler chicken finishers were increased with *Leuceana* or *Moringa* leaves meal inclusion in the diets. The increasing of feed price and feed costs along with the reduction of economic margins could be explained by the influence of the high price of groundnut oil incorporated, the opportunity cost of leaves harvesting and processing and the increasing of Feed Conversion Ratio (FCR) recorded with *Leuceana* leaves meal inclusion.

Conclusion: The incorporation of *Leuceana leucocephala* leaves meal up to 21% in the diets of growing traditional Senegal chickens had no adverse effects on live body weight, average daily weight gain, daily feed intake, feed conversion ratio, health and mortality rate, carcass and organs characteristics in birds compared to their controls. A part from the dark yellowing of abdominal fat of carcasses observed in birds fed LL₂₁ diet, significantly better growth performances, feed costs and economic margins were recorded in growing indigenous chickens fed diet containing 7% and 14% of *Leuceana* leaves meal, making these two dietary treatments the most economically profitable. Considering these results and the high price of raw ordinary ingredients, particularly protein ingredient sources in poultry feeding; the recovering of these leguminous leaves in the diets of village chickens is a real opportunity for traditional stockholders to improve at lower cost, not only the productivity and nutritional status of their birds, but also their income.

ACKNOWLEDGEMENTS

The authors are grateful to the National Fund of Agricultural and Food Research (FNRAA) of Senegal for financing this study and to the University Agency of French-speaking world (AUF) for its financial assistance.

REFERENCES

- Adebanjo, A. and J.A. Oluyemi, 1981. Etude sur le potentiel de production de viande de volaille indigène du Nigeria, II: Effets de l'âge sur la quantité et la qualité de la viande. Bull. Anim. Health Prod., 29: 425-429.
- Adedokun, S.A. and E.B. Sonaiya, 2001. Comparison of the performance of Nigerian indigenous chickens from three agro-ecological zones. Livest. Res. Rural Dev., 13 (2), URL address: [http://www.cipav.org.co/lrrd/lrrd13/2/aded132.htm].
- AFNOR, 1993. Produits agricoles et alimentaires: Détermination de la cellulose brute, méthode générale. Norme française NF V03-040, Octobre 1993, Afnor, Paris.
- AFNOR, 1984. Aliments des animaux: Dosage du calcium, méthode par spectrométrie d'absorption atomique. Norme française NF V18-108, Septembre 1984, Afnor, Paris.
- AFNOR, 1980. Aliments et produits animaux : Dosage du phosphore total par la méthode spectrophotométrique. Norme française NF V18-106, juin 1980, Afnor, Paris.
- AFNOR, 1977. Produits agricoles et alimentaires: Dosages de l'azote (en vue du calcul de la teneur en protéines brutes), des cendres brutes, des matières grasses brutes et de l'humidité. Normes françaises NF V18-100, 101, 104 et 109, Octobre 1977, Afnor, Paris.
- Agbede, J.O. and V.A. Aletor, 2003. Evaluation of fish meal replaced with leaf protein concentrate from *Glyricidia* in diets for Broiler chicks: Effect on performance, muscle growth, hematology and serum metabolites. Int. J. Poult. Sci., 2: 242-250.
- Agbede, G.B., A. Teguia and Y. Manjeli, 1995. Enquête sur l'élevage traditionnel des volailles au Cameroun. Notes techniques, Tropicultura, 13: 22-24.
- Akbar, M.A. and P.C. Gupta, 1985. Proximate composition, tannin and mineral contents of different cultivars and of various plant parts of subabul (*Leucaena leucocephala*). Ind. J. Anim. Sci., 55: 808-812.
- Akouango, F., P. Bandtaba and C. Ngokaka, 2010. Croissance pondérale et productivité de la poule locale *Gallus domesticus* en élevage fermier au Congo. Anim. Genet. Resour., 46: 61-65.
- Alders, R., 2005. L'aviculture: Source de profit et de plaisir. Brochure de la FAO sur la diversification, Rome: FAO, 3.
- Aletor, V.A. and O.A. Omodara, 1994. Studies on some leguminous browse plants, with particular reference to their proximate, mineral and some endogenous anti-nutritional constituents. Anim. Feed Sci. Technol., 46: 343-348.
- Ali, D., 2001. Etude de l'influence du niveau énergétique de la ration sur la productivité de la poule locale (*Gallus domesticus*). Thèse Méd. Vét., EISMV: Dakar, 20.
- Ash, A.J. and L.A. Petaia, 1992. Nutritional value of *Sebania grandiflora* leaves for ruminants and monogastrics. Trop. Agric. (Trinidad), 69: 223-228.
- Atawodi, S.E., D. Mari, J.C. Atawodi and Y. Yahaya, 2008. Assessment of *Leucaena leucocephala* leaves as feed supplement in laying hens. Afr. J. Biotechnol., 7: 317-321.
- Ayssiwede, S.B., J.C. Zanmenou, Y. Issa, M.B. Hane, A. Dieng, C.A.A.M. Chrysostome, M.R. Houinato, J.L. Hornick and A. Missohou, 2011. Nutrient composition of some unconventional and local feed resources available in Senegal and recoverable in indigenous chickens or animal feeding. Pak. J. Nutr., 10: 707-717.
- Ayssiwede, S.B., C. Chrysostome, W. Ossebi, A. Dieng, J.L. Hornick and A. Missohou, 2010a. Utilisation digestive et métabolique et valeur nutritionnelle de la farine de feuilles de *Cassia tora* (Linn.) incorporée dans la ration alimentaire des poulets indigènes du Sénégal. Revue Méd. Vét., 161: 549-558.
- Ayssiwede, S.B., A. Dieng, C. Chrysostome, W. Ossebi, J.L. Hornick and A. Missohou, 2010b. Digestibility and metabolic utilization and nutritional value of *Leucaena leucocephala* (Lam.) leaves meal incorporated in the diets of indigenous Senegal chickens. Int. J. Poult. Sci., 9: 767-776.
- Bay, C.E., 2006. Première évaluation de la structure et de l'importance du secteur avicole commercial et familial en Afrique de l'Ouest: Synthèse des rapports nationaux (Bénin, Cameroun, Mali, Niger, Sénégal, Togo), ECTAD/AGAP-FAO, pp: 47.
- Bello, H., 2010. Essai d'incorporation de la farine des feuilles de *Moringa oléifera* dans l'alimentation chez les poulets indigènes du Sénégal: Effets sur les performances de croissance, les caractéristiques de la carcasse et le résultat économique. Thèse Méd. Vét., EISMV: Dakar, 27.
- Bhatnagar, R., M. Kataria and S.V.S. Verna, 1996. Effect of dietary leucaena leaf meal on the performance and egg characteristics in white leghorn hens. Ind. J. Anim. Sci., 66: 1291-1294.
- Bonfoh, B., P. Ankers, K. Pfister, L.J. Pangui and B.S. Toguebaye, 1997. Répertoire de quelques contraintes de l'aviculture villageoise en Gambie et propositions de solutions pour son amélioration. In Proceedings INFPD WORKSHOP: M'Bour-Sénégal, 9-13 décembre 1997, pp: 135-147.

- Bordas, A. and F. Minvielle, 1997. Réponse à la chaleur des poules pondeuses issues des lignées sélectionnées pour une faible (R) ou forte (R⁺) consommation alimentaire résiduelle. *Genet. Sel. Evol.*, 29: 279-290.
- Buldgen, A., F. Detimmerman, B. Sall and R. Compere, 1992. Etude des paramètres démographiques et zootecniques de la poule locale dans le bassin arachidier sénégalais. *Revue Elev. Méd. Vét. Pays Trop.*, 45: 341-347.
- Dieye, P.N., A. Missouhou and A. Faye, 2010. L'aviculture familiale: Un levier pour améliorer les revenus des éleveurs pauvres au Sud du Sénégal. In: Faye B. et Duteurtre G. (Ed.): L'élevage, richesse des pauvres, Paris: Editions Quae, pp: 191-201.
- D'Mello, J.P.F., 1992. Chemical constraints to the use of tropical legumes in animal nutrition. *Anim. Feed Sci. Technol.*, 38: 237-261.
- D'Mello, J.P.F., 1982. Toxic factors in some tropical legumes. *World Rev. Anim. Prod.*, 18: 41-46.
- D'Mello, J.P.F. and T. Acamovic, 1989. *Leucaena leucocephala* in poultry nutrition - A review. *Anim. Feed Sci. Technol.*, 26: 1-28.
- D'Mello, J.P.F. and T. Acamovic, 1982. Growth performance of and mimosine excretion by young chicks fed on *Leucaena leucocephala*. *Anim. Feed Sci. Technol.*, 7: 247-255.
- D'Mello, J.P.F., T. Acamovic and A.G. Walker, 1987. Evaluation of leucaena leaf meal for broiler growth and pigmentation. *Trop. Agric. (Trinidad)*, 64: 33-35.
- D'Mello, J.P.F. and K.W. Fraser, 1981. The composition of leaf meal from *Leucaena leucocephala*. *Trop. Sci.*, 23: 75-78.
- Doumbia, F., 2002. L'approvisionnement en intrants de la filière avicole moderne au Sénégal. Thèse Med. Vét., EISMV: Dakar, 27.
- Ekpenyong, T.E., 1986. Nutrient and amino acid composition of *Leucaena leucocephala* (Lam.) de Wit. *Anim. Feed Sci. Technol.*, 15: 183-187.
- Fall, M. and A. Buldgen, 1996. Projet d'appui au développement des productions animales de l'ENSA de Thiès. ENSA: Thiès, Rapport n°6, pp: 85.
- Fayeye, T.R., A.B. Adeshiyani and A.A. Olugbami, 2005. Egg traits, hatchability and early growth performance of the Fulani-ecotype chicken. *Livest. Res. Rural Dev.*, 17 (8), URL address: [<http://www.lrrd.org/lrrd17/8/faye17094.htm>].
- Fotsa, J.C., 2008. Caractérisation des performances de poules locales en station expérimentale. In Fotsa J.C. (Ed.): Caractérisation des populations de poules locales (*Gallus gallus*) au Cameroun. Thèse de Ph.D, Agroparistech et Université de Dschang, pp: 175-232.
- Fotsa, J.C., X. Rognon, M. Tixier-Boichard, J.D. Ngou Ngoupayou, D. Pone Kamdem, Y. Manjeli and A. Bordas, 2007. Exploitation de la poule locale (*Gallus gallus*) en zone de forêt humide du Cameroun. *Bull. Santé Prod. Anim. Afrique*, 55: 59-73.
- Gueye, E.F., 2000. The role of family poultry in poverty alleviation, food security and the promotion of gender equality in rural Africa. *Outlook on Agric.*, 29: 129-136.
- Gueye, E.F., 1997. Diseases in village chickens control through ethno-veterinary medicine. *ILEIA Newsletter*, pp: 20-21.
- Gupta, B.S., N. Satapathy, S.S. Chhabra and S.K. Ranjhan, 1970. Effect of Chakunda (*Cassia tora*, Linn.) leaf meal on growth and egg production of White Leghorn birds. *Ind. Vet. J.*, 47: 1094-1101.
- Halima, H.M., 2007. Phenotypic and genetic characterization of indigenous chicken populations in Northwest Ethiopia. PhD thesis, Faculty of Natural and Agricultural Sciences, University of the Free State: Bloemfontein, South Africa, pp: 176.
- Halima, H., F.W.C. Naser, D. Tadelle, E. Van Marle-Koster and A. De Kock, 2007a. Village-based indigenous chicken production system in north-west Ethiopia. *Trop. Anim. Health Prod.*, 39: 189-197.
- Halima, H., F.W.C. Naser, D. Tadelle, A. De Kock and E. Van Marle-Koster, 2007b. Studies on the growth performance of native chicken ecotypes and RIR chicken under improved management system in Northwest Ethiopia. *Livest. Res. Rural Dev.*, 18 (6), URL address: [<http://www.lrrd.org/lrrd18/6/cont1806.htm>].
- Hofman, A., 2000. Amélioration de l'aviculture traditionnelle aux îles Comores: Impact de la semi-claustration et de la complémentarité par une provende locale sur la productivité de la volaille locale. Mémoire de 3^e doctorat en Médecine Vétérinaire. FMV/Université de Liège, Liège, pp: 71.
- Hussain, J., P.V.V. Satyanarayana Reddy and V.R. Reddy, 1991. Utilisation of *Leucaena* leaf meal by broilers. *Br. Poult. Sci.*, 32: 131-137.
- Ihekumwemere, F.C., E.C. Ndubuisi, E.A. Mazi and M.U. Onyekwere, 2008. Performance, nutrient utilization and organ characteristics of broilers fed Cassava leaf meal (*Manihot esculenta*, Crantz). *Pak. J. Nutr.*, 7: 13-16.
- ITAVI, 2003. La production de poulets de chair en climat chaud. ITAVI, Rennes, pp: 110.
- Jones, R.J. and R.G. Megarrity, 1983. Comparative toxicity responses of goats fed on *Leucaena leucocephala* in Australia and Hawaii. *Aust. J. Agric. Res.*, 34: 781-790.

- Joseph, J.K., O.O. Balogun and M.A. Famuyima, 1992. Carcass evaluation and organoleptic assessment of quality attributes of some selected Nigerian birds. *Bull. Anim. Health Prod. Africa*, 40: 97-102.
- Kajjage, J.T., S.V. Sarwatt and S.K. Mutayoba, 2003. *Moringa oleifera* leaf meal can improve quality characteristics and consumer preference of marketable eggs. *Numerical proceedings papers*, 2003. URL address: [<http://www.costech.or.tz>], consulted April, 3rd 2009.
- Kakengi, A.M.V., J.T. Kajjage, S.V. Sarwatt, S.K. Mutayoba, M.N. Shem and T. Fujihara, 2007. Effect of *Moringa oleifera* leaf meal as a substitute for sunflower seed meal on performance of laying hens in Tanzania. *Livest. Res. Rural Dev.*, 19 (8), URL address: [<http://www.lrrd.org/lrrd19/8/kake19120.htm>].
- Kingori, A.M., J.K. Tuitoek, H.K. Muiruri, A.M. Wachira and E.K. Birech, 2007. Protein intake of growing indigenous chickens on free-range and their response to supplementation. *Int. J. Poult. Sci.*, 6: 617-621.
- Kitalyi, A.J. and A. Mayer, 1998. Village chicken production systems in rural Africa. Household food security and gender issues. *Animal Production and Health Paper 142*, FAO : Rome, Italy, pp: 81.
- Kondombo, S.R., 2005. Improvement of village chicken production in a mixed (chicken-ram) farming system. Ph.D Thesis, Institute of Animal Science, Wageningen University: The Netherlands, pp: 208.
- Kondombo, S.R., R.P. Kwakkel, M. Slingerland, A.J. Nianogo and M.W.A. Verstegen, 2003. Effects of local feedstuff supplementation on performance and nutritional status of village chickens during the end of the rainy season in Burkina Faso. *Revue Elev. Méd. Vét. pays Trop.*, 56: 199-204.
- Leclercq, B., Y. Henry and J.M. Perez, 1984. Valeur énergétique des aliments destinés aux animaux monogastriques. In: INRA (Ed.). *Alimentation des animaux monogastriques: Porcs, lapins volailles*, INRA, Paris, pp: 9-15.
- Missohou, A., P.N. Dieye and E. Talaki, 2002. Rural poultry production and productivity in Southern Senegal. *Livest. Res. Rural Dev.*, 14 (2), URL address: [<http://www.cipav.org.co/lrrd/lrrd14/2/miss142.htm>].
- Mohammed, M.D., Y.I. Abdalsalam, A.R. Mohammed Keir, W. Jin-Yu and M.H. Hussein, 2005. Growth performance of indigenous X exotic crosses of chicken and evaluation of general and specific combining ability under Sudan condition. *Int. J. Poult. Sci.*, 4: 468-471.
- Moula, N., N. Antoine-Moussiaux, F. Farnir, J. Dettleux and P. Leroy, 2009. Réhabilitation socio-économique d'une poule locale en voie d'extinction: la poule Kabyle (Thayazit lekvayel). *Ann. Méd. Vét.*, 153: 178-186.
- Msoffe, P.L.M., M.M.A. Mtambo, U.M. Minga, J.E. Olsen, H.R. Juul-Madsen, P.S. Gwakisa, S.K. Mutayoba and A.M. Katule, 2004. Productivity and reproductive performance of the free-range local domestic fowl ecotypes in Tanzania. *Livest. Res. Rural Dev.*, 16 (9), URL address: [<http://www.lrrd.org/lrrd16/9/msof16067.htm>].
- Mutayoba, S.K., E. Dierenfeld, V.A. Mercedes, Y. Frances and C.D. Knight, 2011. Determination of chemical composition and ant-nutritive components for Tanzanian locally available poultry feed ingredients. *Int. J. Poult. Sci.*, 10: 350-357.
- Mutayoba, S.K., B.M. Mutayoba and P. Okot, 2003. The performance of growing pullets fed diets with varying energy and leucaena leaf meal levels. *Livest. Res. Rural Dev.*, 15 (8), URL address: [<http://www.lrrd.org/lrrd15/8/muta158.htm>].
- Ndegwa, J.M., R. Mead, P. Norrish, C.W. Kimani and A.M. Wachira, 2001. The growth performance of indigenous chickens fed diets containing different levels of protein during rearing. *Trop. Anim. Health Prod.*, 33: 441-448.
- Odunsi, A.A., M.O. Ogunleke, O.S. Alagbe and T.O. Ajani, 2002. Effect of feeding *Gliricidia sepium* leaf meal on the performance and egg quality of layers. *Int. J. Poult. Sci.*, 1: 26-28.
- Olugbemi, T.S., S.K. Mutayoba and F.P. Lekule, 2010a. Effect of *Moringa (Moringa oleifera)* inclusion in cassava based diets fed to broiler chickens. *Int. J. Poult. Sci.*, 9: 363-367.
- Olugbemi, T.S., S.K. Mutayoba and F.P. Lekule, 2010b. Evaluation of *Moringa oleifera* leaf meal inclusion in cassava chip based diets fed to laying birds. *Livest. Res. Rural Dev.*, 22 (6), URL address: [<http://www.lrrd.org/lrrd22/6/olug22118.htm>].
- Omekam, V.N., 1994. Studies on nutrition and health implications of dietary inclusion of dried poultry waste for broilers. Msc. Thesis, Federal University of Technology; Owerri, Nigeria, pp: 41.
- Osei, S.A., Opuku and C.C. Atuahene, 1990. *Gliricidia* leaf meal as an ingredient in layers diets. *Anim. Feed Sci. Technol.*, 29: 303-308.
- Ossebi, W., 2010. Etudes digestive, métabolique et nutritionnelle des farines de feuilles de légumineuses incorporées dans des rations alimentaires chez les poulets locaux du Sénégal : cas des feuilles de *Moringa oleifera* (Lam.), de *Leucaena leucocephala* (Lam.) et de *Cassia tora* (Linn.). Thèse Méd. Vét., EISMV : Dakar, 26.

- Onibi, G.E., O.R. Folorunso and C. Elumelu, 2008. Assessment of partial Equi-protein replacement of soyabean meal with Cassava and *Leucaena* leaf meals in the diets of broiler chicken finishers. Int. J. Poult. Sci., 7: 408-413.
- Pamo, T.E., B. Boukila, F.A. Fonteh, F. Tendonkeng and J.R. Kana, 2005. Composition chimique et effet de la supplémentation avec *Calliandra calothyrsus* et *Leucaena leucocephala* sur la production laitière et la croissance des chevreaux nains de Guinée. Livest. Res. Rural Dev., 17 (3), URL address: [http://www.lrrd.org/lrrd17/3/ledo17030.htm].
- Pojun, P., S. Pojun and S. Rojanastid, 1989. Optimum levels of leucaena leaf meal in native broiler feeding. Kaset Kaona (Thailand), 4: 57-70.
- Pousga, S., H. Boly, J.E. Linderberg and B. Ogle, 2006. Effect of supplementation on feed intake and performance of confined and Scavenging crossbred growing chickens in Burkina Faso. Trop. Anim. Health Prod., 38: 323-331.
- Pousga, S., H. Boly, J.E. Linderberg and B. Ogle, 2005. Scavenging pullets in Burkina Faso: Effect of season, location and breed on feed and nutrient intake. Trop. Anim. Health Prod., 37: 623-634.
- Quang Hien, T. and N. Duc Hung, 1998. The effect of *Leucaena* leaf meal on egg quality and growth of broiler chickens. In : *Leucaena* adaptation, quality and farming system. Proceedings of a workshop held in Hanoi, Vietnam, 9-14 February, pp: 296-297.
- Quang Hien, T. and N. Thi Inh, 1998. The effect of supplementing the diet of broiler chickens with *Leucaena* leaf meal and FeSO₄. In: *Leucaena* adaptation, quality and farming system. Proceeding of a workshop held in Hanoi, Vietnam, 9-14 February, pp: 298-299.
- Rashid, M.M., M.N. Islam, B.C. Roy, K. Jakobsen and C. Lauridsen, 2005. Nutrient concentrations of crop and gizzard contents of indigenous scavenging chickens under rural conditions of Bangladesh. Livest. Res. Rural Dev., 17 (2), URL address: [http://www.lrrd.org/lrrd17/2/rash17016.htm].
- Rashid, M.M., M.N. Islam, B.C. Roy, K. Jakobsen and C. Lauridsen, 2004. Effect of dietary supplementation of energy and protein on production performance and egg quality of scavenging crossbred hens in rural areas under tropical conditions. Livest. Res. Rural Dev., 16 (8), URL address: [http://www.lrrd.org/lrrd16/8/rash16063.htm].
- Ravindran, V., E.T. Kornegay, A.S.B. Rajaguru, L.M. Potter and J.A. Cherry, 1986. Cassava leaf meal as a replacement for coconut oil meal on broiler diets. Poult. Sci., 65: 1720-1727.
- Ravindran, V., E.T. Kornegay and J.A. Cherry, 1983. Feeding values of cassava tuber and leaf meals. Nutr. Rep. Int., 28: 189-196.
- Rekhis, J., 2002. Nutrition avicole en Afrique du Sud. SPESFEED (Pty) Ltd, 1994-2002; Version française produite en coopération avec American Soybean Association (ASA) et United Soybean Board (USB), Rivonia, Afrique du Sud, pp: 342.
- Riise, J.C., A. Permin, C.V. Mcainsh and L. Frederiksen, 2004. Elevage de la volaille villageoise. Un manuel technique sur la production avicole à petite échelle. RDAPE: Copenhagen, Danemark, pp: 103.
- Ross, E. and J.A. Springhall, 1963. Evaluation of ferrous sulphate as a detoxifying agent for mimosine in *Leucaena glauca* rations for chickens. Aust. Vet. J., 39: 394-397.
- Satyanarayana Reddy, P.V.V., R. Ramachandra Reddy and K. Sudba Reddy, 1987. Utilisation of Subabul (*Leucaena leucocephala*) leaf meal in male chick diets. Ind. Vet. J., 64: 1078-1079.
- Semenye, P.P., 1990. Toxicity response of goats fed on *Leucaena leucocephala* forage only. Small Ruminant Res., 3: 617-620.
- Sonaiya, E.B. and S.E.J. Swan, 2004. Production en aviculture familiale - Un Manuel Technique- Production et Santé Animales. FAO, Rome, Italy, pp: 134.
- Springhall, J.A. and E. Ross, 1965. Preliminary studies with poultry rations for the territory of Papua and New Guinea. 2: Layer rations with copra, sago and *Leucaena leucocephala*. Papua New Guinean Agric. J., 17: 122-126.
- Suliman, H.B., A.M. Shommein and S.A. Shaddad, 1987. The pathological and biochemical effects of feeding fermented leaves of *Cassia obtusifolia* « Kawal » to broiler chicks. Av. Pathol., 16: 43-49.
- Surai, P.F., B.K. Speake and N.H.C. Sparks, 2001. Carotenoids in avian nutrition and embryonic development. 1. Absorption, availability and levels in plasma and egg yolk. J. Poult. Sci., 38: 1-27.
- Tadelle, D. and B. Ogle, 2001. Village poultry production systems in the central Highlands of Ethiopia. Trop. Anim. Health Prod., 33: 521-537.
- Talpin, D.E., J.P.F. D'Mello and P. Phillips, 1981. Evaluation of leucaena leaf meal from Malawi as a source of xanthophylls for the laying hen. Trop. Sci., 23: 217-226.
- Tangendjaja, B., J.B. Lowry and R.B.H. Wills, 1984. Optimisation of conditions for the degradation of mimosine in leucaena leaf. J. Sci. Food Agric., 35: 613-616.
- Tendonkeng, F., B. Boukila, A. Beguide and E. PamoTendonkeng, 2008. Essai de substitution du tourteau de soja par la farine de feuilles de *Moringa oleifera* dans la ration finition des poulets de chair. Conférence Internationale sur le renforcement de la compétitivité en Aviculture Semi-industrielle en Afrique (CIASA), 5-9 mai 2008, Dakar-Sénégal, pp: 16.

- Teno, G., 2009. Etude des déterminants de la consommation du poulet du pays: cas de la région de Dakar (Sénégal). Thèse Méd. Vét., EISMV: Dakar, 36.
- Ter Meulen, U., F. Pucher, M. Szyszka and El-Harith, 1984. Effects of administration of leucaena meal on growth performance of and mimosine accumulation in growing chicks. *Archiv für Geflügelkunde*, 48: 41-44.
- Traore, E.H., 2006. Première évaluation de la structure et de l'importance du secteur avicole commercial et familial en Afrique de l'Ouest: Rapport du Sénégal, ECTAD/AGAP-FAO, pp: 53.
- Wee, K.L. and S. Wang, 1987. Effect of post-harvest treatment on the degradation of mimosine in *Leucaena leucocephala* leaves. *J. Sci. Food Agric.*, 39: 195-201.