



# Journal of Applied Sciences

ISSN 1812-5654

**science**  
alert

**ANSI***net*  
an open access publisher  
<http://ansinet.com>

## Determination of Nonionic Surfactant in Liquid Detergent by UV-vis Spectrophotometry and Multivariate Calibration Method

Mahmoud Reza Sohrabi, Arezoo Hassan Nouri, Atena Adnani and Hamidreza Fard Masoumi  
Department of Chemistry, Azad University-North Tehran Branch,  
Shariati Street-Zafar Cross Road P.O. Box 19585-936, Tehran, Iran

**Abstract:** The aim of this study was determination of lauramide as a nonionic surfactant in liquid detergent using multivariate calibration. A Partial Least Squares (PLS) algorithm is used to perform the calibration. The concentration of lauramide for experimental calibration matrix was varied between 0.005-0.020 g mL<sup>-1</sup>. Absorbance data of the calibration standards were taken between 200-600 nm with UV-vis spectrometer. Then absorbance data and concentration were fed to model as input and output, respectively. For achieving the best model parameters of model were evaluated. In other step, first order derivative spectra were considered as input of model and parameters of model were tested. The relative errors in each step were calculated. Relative error less than 2.7% for zero and first derivative spectral data set respectively, were obtained.

**Key words:** Multivariate calibration, spectrophotometry, Partial Least Squares (PLS)

### INTRODUCTION

Lauramide is a nonionic surfactant which used in liquid detergent. It is cheap, non-toxic, improve leaf surface spreading and sticking and improve herbicide absorption. The determination of lauramide in finished products presents interference problems that are not well-solve and demand HPLC methods, frequently preceded by laborious solvent extraction (Carolei and Gutz, 2005).

Determination of lauramide in one single stage using UV-vis spectroscopy is difficult when different species are present in the medium because of highly overlapping signals, which prevent their calibration. To improve the quantification of overlapped peaks in UV-vis and other separation techniques, different multivariate calibration method has been applied.

Multivariate calibration relates easily obtainable signals, e.g., spectra, to properties of interest that are more difficult to directly measure typically the concentration of the components in the system. The main goal of multivariate calibration is focused on developing a robust regression model that will give reliable prediction of a certain response from a set of considered predictors in order to ensure the accurate determination of future samples. There are many multivariate calibration methods, including Partial Least Squares (PLS) and Principle Component Regression (PCR).

Partial Least Squares (PLS) has become a usual tool for multivariate calibration models, because of the quality of the obtained calibration models and the ease of its

implementation. It allows a rapid determination of components, usually with no need of a prior separation for analysis. PLS is gaining importance in many fields of chemistry, analytical, physical, clinical chemistry and industrial process control can be benefited from the use of this method (Li and Tang, 2003).

The theoretical relationship among PLS has been treated in the literature (Martens and Naes, 1989). The standard method for determination of lauramide is based on titrimetric method. This procedure is time-consuming.

In this study, a UV-vis spectrophotometric method is proposed for determination of lauramide at the presence of the related matrix of liquid detergent e.g., sodium lauryl ether sulfate, betaine, glycerin, color and essence using Partial Least Squares (PLS) multivariate calibration.

### MATERIALS AND METHODS

The present study was conducted in the Laboratory of University.

**Apparatus and software:** UV-vis spectrophotometer (UVIKON 922) was used for absorbance measurements in the wavelength region of 200-600 nm and 1 cm pathlength quartz spectrophotometric cells. MATLAB 6.5.0 (Math Works) and the related toolbox was applied for calculation.

**Reagent and procedure:** All solutions were prepared with analytical grade reagents. Stock solution was prepared by dissolving 10 g of lauramide in distilled water and diluting

to 1000 mL. Matrix solution was prepared by dissolving 14.28 g of sodium lauryl ether sulfate, 21.85 g of betaine, 21.87 g of glycerin, 0.05 g of color and 2.15 g of essence, respectively, in distilled water and diluting to 1000 mL. Absorption spectra of aqueous solution of lauramide and each compounds of the matrix between 200 and 600 nm are shown in Fig. 1.

Sixteen standard solution were prepared by dissolving suitable volumes of stock solution of lauramide and the related matrixes in 100 mL volumetric flask and completed to the final volume with distilled water. The final concentration ranges of these solutions varied between 0.005-0.020 (g mL<sup>-1</sup>) for lauramide. The concentration of the related matrixes in all these standard solutions were kept constant. In other step first order derivative spectra of these solutions were calculated. Figure 2 and 3 shows the absorbance spectra of standard solutions between 200-600 nm in zero and first order derivative spectra.

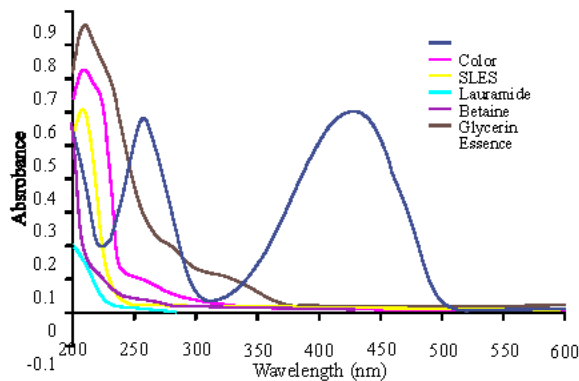


Fig. 1: Absorption spectra of lauramide and components of matrix

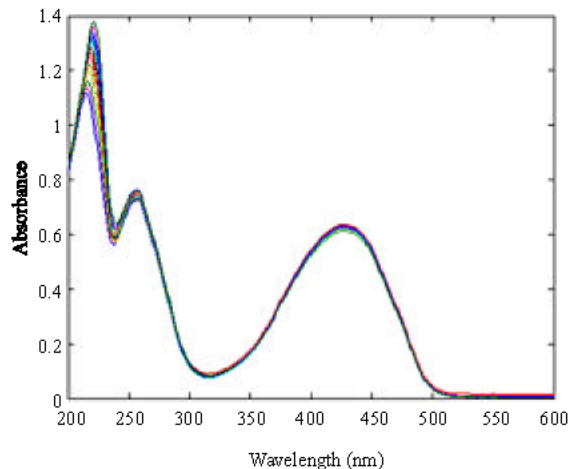


Fig. 2: Zero order derivative spectra of standard solutions containing lauramide and the related matrixes

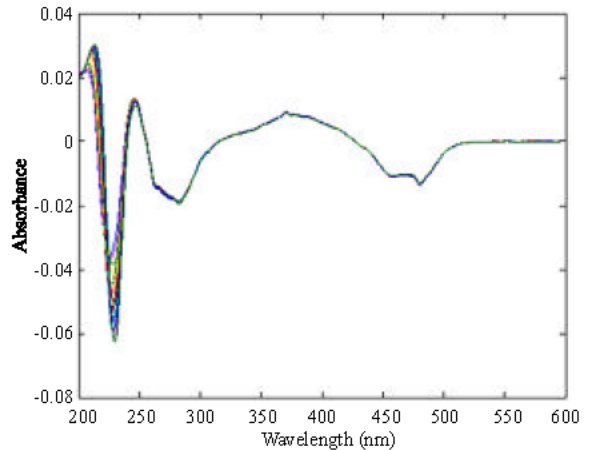


Fig. 3: First order derivative spectra of standard solutions containing lauramide and the related matrixes

### RESULTS AND DISCUSSION

As shown in Fig. 1 lauramide, sodium lauryl ether sulfate and essence exhibited overlapped bands in spectral region 200-240 nm. Quantitative by the traditional univariate calibration method was unsuitable here, so multivariate PLS regression calibration was used instead. PLS methodology entails choosing a wavelength range and a number of factors leading to acceptably accurate and precise results. For this purpose must be found best model. For constructing model standard solutions randomly were separated in two sets which called calibration set and testing set.

Calibration set used for design the model. Several parameters and factors for achieving the best model were evaluated. In the best model different spectral regions were evaluated and the wavelength region of 221-241 nm was selected as most convenient spectral region. The predicted results for lauramide in this region are show in Table 1.

The selection of the number of factors used in the calibration with PLS is very important for achieving the best prediction. As a first approach, the number of factors were estimated by cross-validation method. The cross-validation method employed was to eliminate only one sample at a time and then PLS calibrate the remaining standard spectra (Ghasemi *et al.*, 2003). By using this calibration the concentration of the samples, left out was predicted. This process was repeated until each standard had been left out once. One reasonable choice for the optimum number of factors would be that number (h\*) which yielded the minimum PRESS.

$$PRESS = \sum_{i=1}^m (\hat{C}_i - C_i)$$

Table 1: Relative Error (RE) and results obtained in the determination of lauramide using PLS in the optimum wavelength range and zero-derivative spectrophotometry for testing set

| Sample | Actual (g mL <sup>-1</sup> ) | Prediction (g mL <sup>-1</sup> ) | RE (%) |
|--------|------------------------------|----------------------------------|--------|
| 1      | 0.0200                       | 0.0195                           | 2.5    |
| 2      | 0.0075                       | 0.0073                           | 2.6    |

Table 2: Relative Error (RE) and results obtained in the determination of lauramide using PLS in the optimum wavelength range and first-derivative spectrophotometry for testing set

| Sample | Actual (g mL <sup>-1</sup> ) | Prediction (g mL <sup>-1</sup> ) | RE (%) |
|--------|------------------------------|----------------------------------|--------|
| 1      | 0.0200                       | 0.0200                           | 0.0    |
| 2      | 0.0075                       | 0.0073                           | 2.6    |

In this equation,  $m$  is the total number of calibration samples  $\hat{C}_i$ , represent the estimated concentration and  $C_i$  the reference concentration for the  $i$ th sample left out of the calibration during cross-validation. The optimal number of factor for lauramide at zero-derivative spectra was obtained 7.

The prediction error of lauramide was calculated as the Relative Error (RE). The results of RE (%) are shown in Table 1.

In other step, first order derivative spectra of standard solutions were studied. For obtaining the best PLS model the same procedure which discussed above were used. The wavelength region of 226-251 nm was selected as most appropriate spectral region. The predicted results and RE (%) for lauramide in this region are shown in Table 2. The optimal number of factor was obtained 4.

## CONCLUSIONS

A UV-vis spectrophotometric method of analysis was successfully research and developed for determination of lauramide at the presence of related matrix in liquid detergent. Multivariate calibration model were built from the zero and first derivative spectral data matrices on the basis of PLS method. This technique consists in a simple, fast and inexpensive procedure which does not require separation step.

## REFERENCES

- Carolei, L. and I.G.R. Gutz, 2005. Simultaneous determination of three surfactants and water in shampoo and liquid soap by ATR-FTIR. *Talanta*, 66: 118.
- Ghasemi, J., R. Leardi and A. Niazi, 2003. Genetic-algorithm-based wavelength selection in multicomponent spectrophotometric determination by PLS: Application on copper and zinc mixture. *Talanta*, 59: 311-317.
- Li, T. and K. Tang, 2003. Comparison of different partial least squares methods in quantitative structure-activity relationships. *Anal. Chim. Acta*, 476: 85.
- Martens, M. and T. Naes (Eds.), 1989. *Multivariate Calibration*, pp: 116.