



# Research Journal of **Forestry**

ISSN 1819-3439



Academic  
Journals Inc.

[www.academicjournals.com](http://www.academicjournals.com)

## ***Orthotrichum schimperi* Hammar a New Record to Libya**

<sup>1</sup>S.G. Mohamed Youssef, <sup>2</sup>S. Abd-El-Razik Khaled and <sup>2</sup>R. Bohawish Hamad  
<sup>1</sup>Department of Botany, Faculty of Science, Benha University, Egypt  
<sup>2</sup>Department of Botany, Faculty of Science, Omar Al-Mukhtar University, Libya

**Abstract:** *Orthotrichum schimperi* Hammar was recorded from Libya for the first time. The taxon is widely distributed through many different parts of the world. The distribution map, description, and illustrated of species are given. This study is to survey the genus *Orthotrichum* growing on trunks of some trees in Al-Jebel Al-Akhdar (Libya) throughout the Winter season (January-March, 2007) and May 2008 and collected it in order to revise the genus in Libya and other countries. About this species, seta was very short, capsule with immersed stomata and after drying having strongly 8 ribbed and calyptra oblong with smooth wall. The taxa moss flora of Libya after this record become 109.

**Key words:** *Orthotrichum*, Wadi Kouf, Al-Jebel Al-akhdar, Libya

### INTRODUCTION

Approximately 850 species, subspecies, varieties and forms of *Orthotrichum* were recorded all over the world (Fig. 1) in both the Northern and Southern hemispheres. From North America, e.g., Canada, Arizona, California, Colorado, Delaware, Georgia, Illinois, Indiana, Iowa, Kansas, Louisiana, Maryland, Michigan, Minnesota, Missouri, Montana,

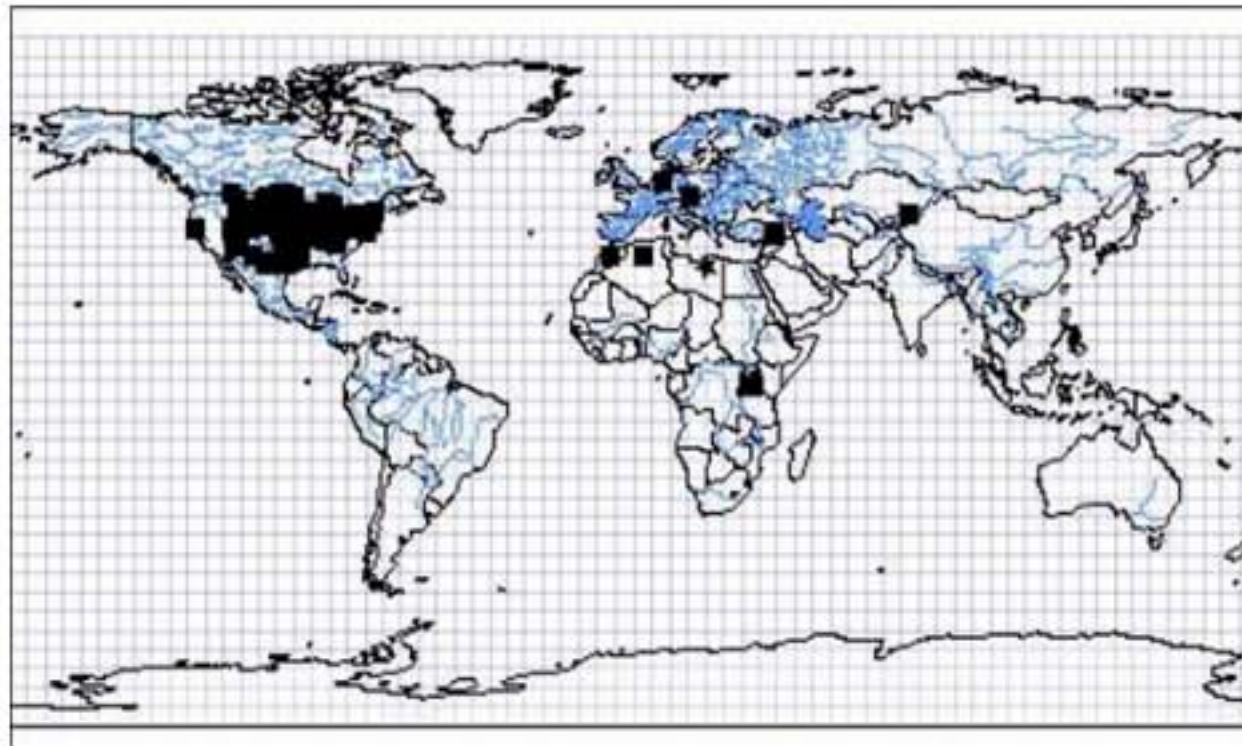


Fig. 1: Map showing distribution of *Orthotrichum* in different parts of the world. (solid square old record, solid stare present record)

**Corresponding Author:** Said Ghanem Mohamed Youssef, Department of Botany,  
Faculty of Science, Benha University, Egypt

Nebraska, New Mexico, New York, North Dakota, Ohio, Oklahoma, Pennsylvania, South Dakota, Tennessee, Texas, Vermont, Wisconsin, Wyoming (Vitt, 1973, 1993; Lewinsky, 1977, 1978, 1984, 1993; Anderson *et al.*, 1990; Haring, 1961; Weber, 1973); European e.g., Austria, Germany, West Germany (Anderson *et al.*, 1990; Judd *et al.*, 2002; Lampton, 1970). Asia e.g., Kazakhstan (Vitt, 1973, 1993) Africa e.g., Algeria, Morocco (Ros *et al.*, 1999; Bizot, 1973; Kis, 1985; Ochi, 1972). The genus also having especially characters e.g., plants small, acrocarpous (sporophytes terminal), not branched or occasionally branched beneath the inflorescences, greenish to blackish, rarely whitish, gonautoicous or cladautoicous, rarely dioicous, known by the large campanulate calyptra covering the young capsule and erect dry leaves. It occurring on various habitats, tree trunks and rocks (Vitt, 1973; Lewinsky, 1993; Judd *et al.*, 2002).

In Libya, the previous literatures on mosses (Müller, 1874; Baroni, 1892; Durand and Barratte, 1910; Zodda, 1913, 1914, 1926; Pampanini, 1917, 1930; Bizot, 1973; Ros *et al.*, 1999; Shabbara and Youssef, 2006) reported 108 different species (14 families) only one of them, belonging to genus *Orthotrichum*, known as *Orthotrichum diaphaniyum* Brid. from Cirenaica (Pampanini, 1930).

The present study aimed to describe *Orthotrichum schimperi* Hammar recorded for the first time from Libya.

#### MATERIALS AND METHODS

One hundred of mosses specimens were collected throughout the Winter (January-March, 2007) and May 2008 on the trunks of vascular trees (*Quercus coccifera* L., *Olea europaea* L., *Ceratonia siliqua* L., *Juniperus phoenicea* L., *Pistacia lentiscus* L and *Phillyrea latifolia* L.) growing in Wadi Kouf area, 82 of them containing genus *Orthotrichum*.

Wadi Kouf area is a part of Al-Jebel Al-Akhdar in Libya. Al-Jebel Al-Akhdar lies between 32° 30'-32° 50' N and 21° 2'-22° E in the North-East of Libya between Benghazi and Darnah (Fig. 2). This Jebel covering by arching Plateau built of upper Cretaceous and

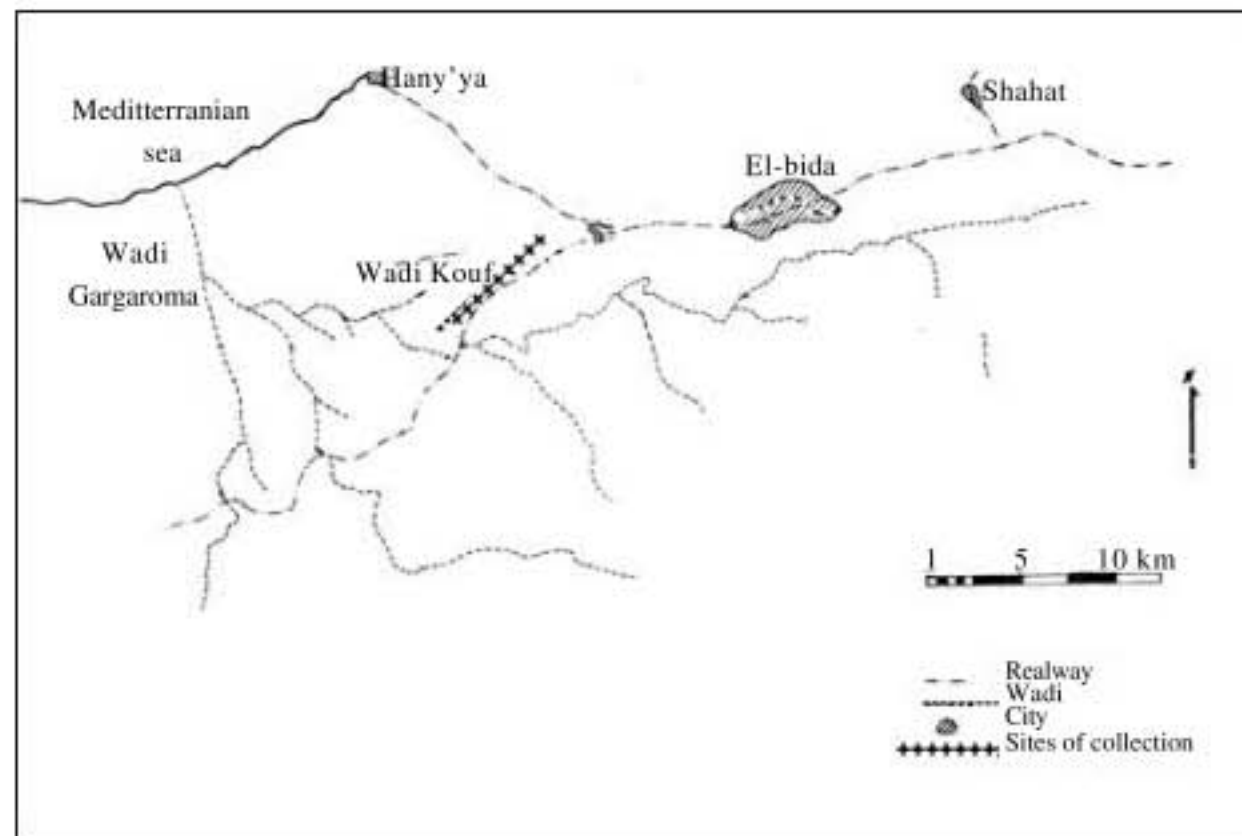


Fig. 2: Map showing the site of study area (Wadi Kouf)

tertiary sediments of limestone, subordinate dolomites and marls. These sediments were deposited at the Southern margin of the Tethys sea.

Mediterranean climate with moderate temperature is the climate of Al-Jebel Al-Akhdar, with more reliable rain fall from Autumn to early Spring. The annual average temperature is 16.4°C.

Wadi Kouf is a humid wadi getting rain from September to May and rarely in Summer. The average annual rainfall ranges between 450-650 mm, 24-30% falling in January. The temperature is 8-13°C in Winter and 22-27°C in Summer, while winds are Northern in Winter but Southern and East Southern in other seasons. The parent rock is mainly limestone of tertiary age. All these conditions suitable habitats for good bryophytes plants (ACSAD, 1981).

Specimens were kept to dry in the laboratory away from direct sunlight. The specimens to be examined were first cleaned in water using a small brush and a needle to remove sticking soil particles. Free-hand transfers sections were prepared from the leaves and stems of gametophytes and longitudinally section from the capsules. The sections were made by placing the specimen in a drop of hot Gelatin 10% on a clean glass slides under a suitable power of a binocular stereoscopic microscope and cutting by a sharp razor with the help of a needle. The lid was removed and the capsule was cut transversely just below the peristome teeth, the latter were then cleaned and transferred onto a clean glass slide being ready for mounting in gelatin. The specimens (whole plants, leaves, capsules, spores, sections, etc.) were photographed using OLYMPUS camera (C-7070, 7.1 Megapixel).

## RESULTS

After careful examination of the eighty two collected specimens, it was found that, nineteen specimens of them related to *Orthotrichum diaphanum* Brid and sixty three to *Orthotrichum schimperi* Hammar (Table 1).

The description and illustrated of *Orthotrichum diaphanum* was made before by others authors (Pampanini, 1930). So this study was described, distributed and illustrated the second species *Orthotrichum schimperi* Hammar in details.

Table 1: *Orthotrichum diaphanum* Brid. (Od. ) and *Orthotrichum schimperi* Hammar (Os.) recorded throughout the study period

| Plant taxa                    | Date of collection |                |                |        | Samples No.                   |                               |
|-------------------------------|--------------------|----------------|----------------|--------|-------------------------------|-------------------------------|
|                               | Juan.2007          | Feb. 2007      | March 2007     | May-08 | <i>Orthotrichum diaphanum</i> | <i>Orthotrichum schimperi</i> |
| <i>Quercus coccifera</i> L.   | 1Od.<br>3 Os.      | 6 Os.          | 3 Od.<br>4 Os. | 2 Os.  | 4                             | 15                            |
| <i>Olea europaea</i> L.       | 1 Od.<br>4 Os.     | 5 Os.          | 6 OS.          | 2 Os.  | 3                             | 17                            |
| <i>Ceratonia siliqua</i> L.   | 1 Od.<br>3 Os.     | 5 Os.          | 1 Od.<br>3 Os. | 3 Os.  | 2                             | 14                            |
| <i>Juniperus phoenicea</i> L. |                    | 3 Od.<br>4 Os. | 4 Os.          | 1 Os.  | 3                             | 10                            |
| <i>Pistacia lentiscus</i> L.  | 3 Od.<br>1 Os.     | 1 Os.          | 1 Od.<br>2 Os. | 1 Os.  | 4                             | 5                             |
| <i>Phillyrea latifolia</i> L. | 1 Od.              |                | 2 Od.<br>1Os.  | 1 Os.  | 3                             | 2                             |

### *Orthotrichum schimperi* Hammar (Fig. 3a-u, 4a-p)

- *O. affine* var. *fallax* (Bridel) Hampe
- *O. brachytrichum* Lesquereux and James

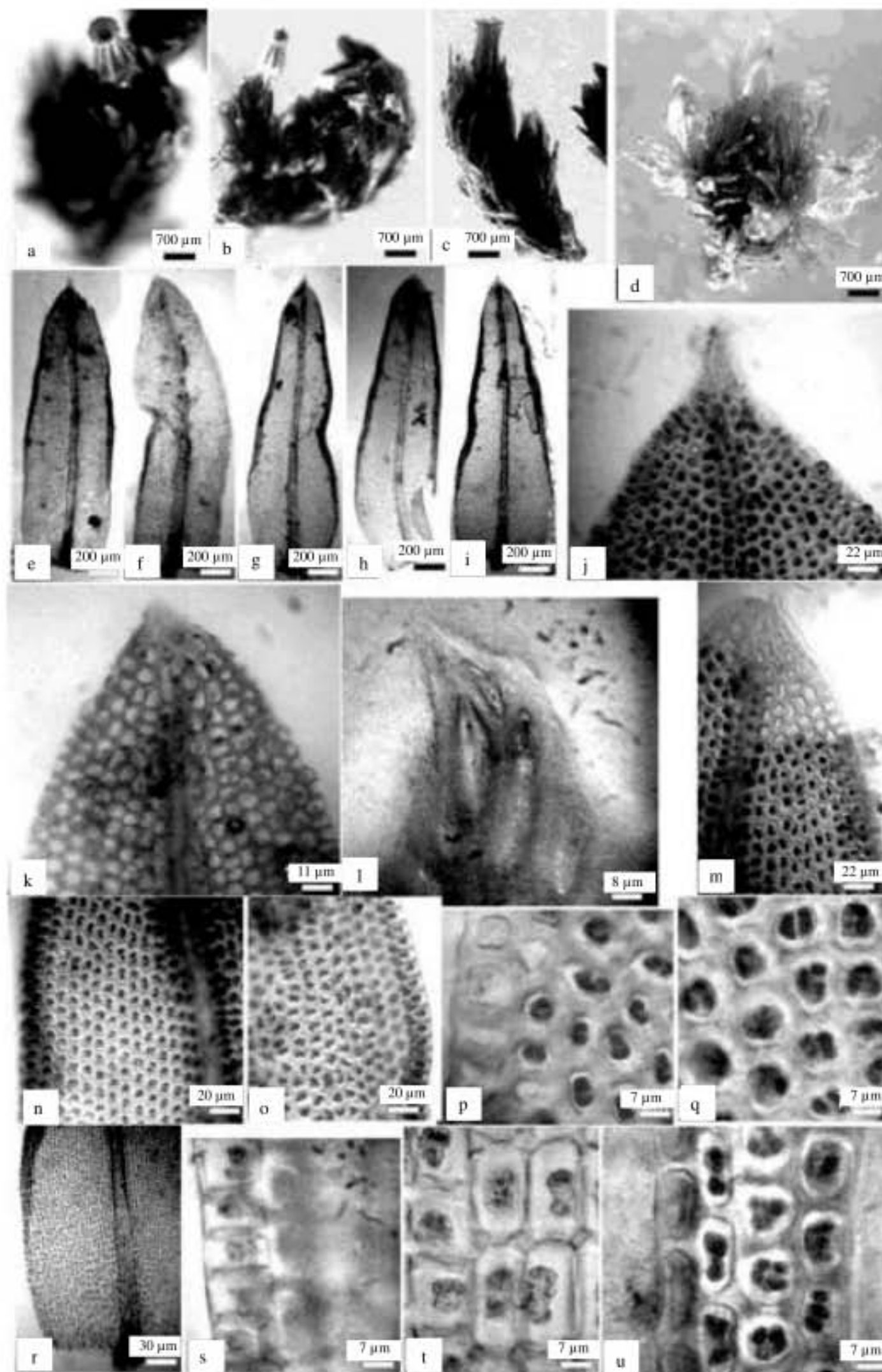


Fig. 3: *Orthotrichum schimperi* Hammar. (a-c) Dry gametophyte carrying sporophyte. (d) Wet gametophyte carrying sporophyte. (e-i) Different shapes of leaf stem. (j-m) Different shapes of leaf stem apices. (n-q) Cells, margin and costa at middle part of leaf stem. (r-u) Cells, margins and costa at leaf base

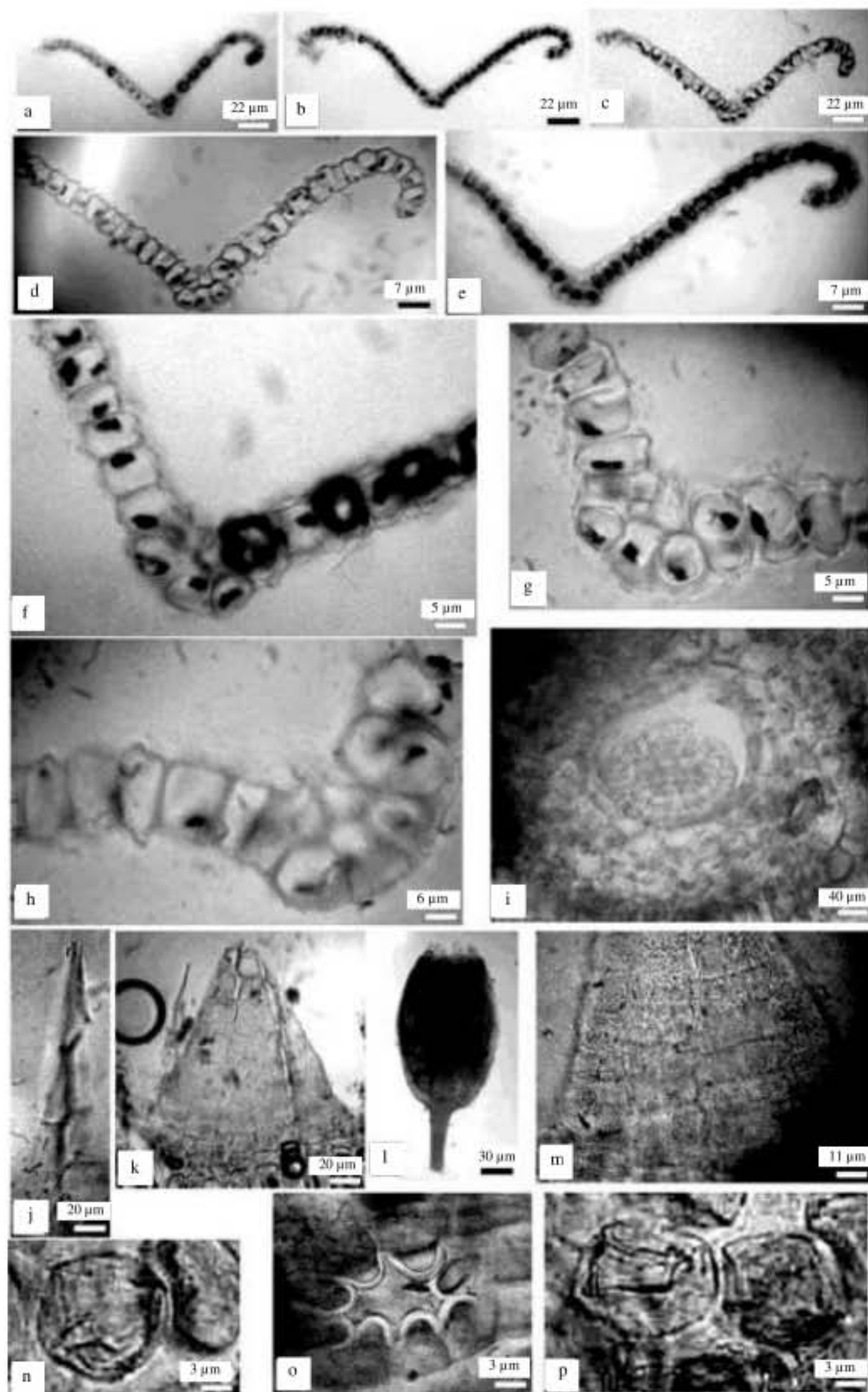


Fig. 4: *Orthotrichum schimperi* Hammar (a-h) Cross-sections of leaf stem. (i) Cross-sections of stem. (j, k, m) Longitudinal sections of stem. (l) Capsule shape. (n, p) Spores. (o) Stomata of capsule

- *O. fallax* Bridel
- *O. fallax* var. *truncatulum* Austin
- *O. schimperi* Hammar var. *americanum* Venturi
- *O. schimperi* Hammar var. *fallax* (Bridel) J. Kickx f
- *O. schimperi* Hammar var. *fallax* (Bridel) Bertsch
- *O. schimperi* Hammar
- *O. schimperi* var. *truncatulum* (Austin) Paris and
- *O. tenellum* var. *pumilum* (Swartz) Boulin

Plants very small, branched, green above, brownish below, autoicous, 3-4 mm long. leaves erect and loosely-appressed when dry, ovate-oblong to lanceolate, 1-2 mm, acute to acuminate, apiculate, margins revolute, entire or rough by means of projecting papillae near apex; upper laminal cells, circular-quadrangle with thick walled, 8×10-10×10 µm in size, 1-stratose, with 1 or 2, small, conical papillae, basal laminal cells rectangular to short-rectangular or quadrangle especially near the margin, weakly nodose or non-nodose, up to 15×50 in size. Costa strong ending below the leaf apical, in cross section with a strongly differentiated double layers of guide cells, without steroids bands and inconspicuous abaxial and adaxial epidermis. Stem cross section rounded triangular, with a brownish central strand. Seta 0.25-0.5 mm in long. Capsule immersed or shortly emergent, fusiform-cylindric to oblong when mature, 1.5 mm long, strongly 8-ribbed, stomata immersed, at middle of the capsule, half guard cells covered by subsidiary cells, pristome teeth double, 8 endostome segments, usually of 1 or 2 rows of cells, 125 µm long and 8 exostome teeth, reflexed, densely papillose or papillose-striate above, 150 µm long. Calyptra oblong and naked, 1-1.5 mm in long. Spores 10×10-13×13 µm in size.

## DISCUSSION

About the habitat of *Orthotrichum*, epiphytic, on branches and trunks of some shrubs and the trees especially, *Quercus coccifera* L., *Olea europaea* L., *Ceratonia siliqua* L., *Juniperus phoenicea* L., *Pistacia lentiscus* L. and *Phillyrea latifolia* L. in humid Wadi Kouf valley sometimes found on lightly shaded rocks and in rock crevices, especially limestone, and is sometimes found on walls of stone or brick (Vitt, 1973).

*Orthotrichum schimperi* Hammar was recorded throughout the world on the trunks of trees and/or on the soil (Vitt, 1973, 1993; Weber, 1973; Lewinsky, 1984, 1993; Anderson *et al.*, 1990) this indicates that this taxa have the ability to grow and adapt different kinds of habitats.

Gametophytically, *Orthotrichum schimperi* Hammar is most closely related to *O. diaphanum* Brid., with which it shares the following characters: large chlorophyllose leaf cells that lack large papillae, presence of numerous gemmae, and ovate-lanceolate leaves. It worthy to mention that, *Orthotrichum schimperi* Hammar has apiculate leaf apices that often are similar to those found on the young plants of *O. diaphanum* Brid. But *Orthotrichum niaphanium* Brid. is distinguished by the hyaline awn of the distal stem leaves.

## CONCLUSION

In conclusion, *Orthotrichum schimperi* Hammar having very short sea, capsule with strongly 8-ribbed after drying and immersed stomata as well as oblong smooth wall calyptra. This is an agreement with the previous study on *Orthotrichum* e.g., (Vitt, 1973, 1993; Weber, 1973; Lewinsky, 1984, 1993; Anderson *et al.*, 1990).

## REFERENCES

- ACSAD, 1981. Kouf national park-vegetation studies ecology and vegetation type. The Arab Center for the Study of Arid Zones and Dry Lands. Damascus, Syria.
- Anderson, L.E., H.A. Crum and W.R. Buck, 1990. List of mosses of North America North of Mexico. *Bryologist*, 93: 448-499.
- Baroni, E., 1892. Spora algune crittogame africane raccolte presso Tripoli di barbeira dal prof. Raffaello Spigai. *Bollettino della Società Botanica Italiana*, pp: 239-243.
- Bizot, M., 1973. Mouses africaines récoltées par M.D. Dénes balázs. *Acta Bot. Acad. Sci. Hungarica*, 18: 7-28.
- Durand, E. and G. Barratte, 1910. *Florae Libycae Prodromus ou Catalogue Raisonné des Plantes de Tripolitaine*. Romet, Genève.
- Haring, I.M., 1961. A checklist of the mosses of the State of Arizona. *Bryologist*, 64: 222-240.
- Judd, W.S., C.S. Campbell, E.A. Kellog and M.J. Donoghue, 2002. *Plant systematics: A phylogenetic approach*. Sinauer, Sunderland, Mass.
- Kis, G., 1985. *Mosses of South-East Tropical Africa*. Institute of Ecology and Botany of the Hungarian Academy of Sciences, Vácrátót, Hungary.
- Lampton, R.K., 1970. Mosses of georgia. A check list of species which have been collected within the State. *Bull. Georgia Acad. Sci.*, 28: 81-98.
- Lewinsky, J., 1977. The genus *Orthotrichum* morphological studies and evolutionary remarks. *J. Hattori Botanical Lab.*, 43: 31-61.
- Lewinsky, J., 1978. The genus *Orthotrichum* Hedw. (Musci) in Africa south of the tropic of Cancer. *Bot. Tidsskrift*, 72: 61-85.
- Lewinsky, J., 1984. *Orthotrichum* Hedw. in South America 1. Introduction and taxonomic revision of taxa with immersed stomata. *Lindbergia*, 10: 65-94.
- Lewinsky, J., 1993. Monographic studies on orthotrichum (Musci). *Bryobrothera*, 2: 1-59.
- Müller, C., 1874. Die moose der rohlfschen expedition nach der lybischen wüste. *Flora*, 57: 481-485.
- Ochi, H., 1972. A revision of African bryoideae, Musci (first part). *J. Fac. Educ.*, 23: 1-126.
- Pampanini, R., 1917. Plante di bengasi e del suo territorio raccolte dal rev. p.d. vito zanon della missione del pp. giuseppini al fuehat. *Nuovo Giornale Giornale Botanico Italiano*, 24: 113-171.
- Pampanini, R., 1930. *Prodromo della flora cirenaica*. Forli: Tipografia Valbonesi, pp: 577. <http://www.americanaexchange.com/NewAE/ibi/itemdetail.asp?bookid=38339546>.
- Ros, R.M., M.J. Cano and J.J. Guerra, 1999. Bryophyte checklist of North Africa. *J. Bryol.*, 21: 207-244.
- Shabbara, H.M. and S.G. Youssef, 2006. *Fobronia raddi* (musci) in libya. *Egypt. J. Biol.*, 8: 100-105.
- Vitt, D.H., 1973. A revision of the genus *Orthotrichum* in North America, North of Mexico. *Bryophytorum Bibliotheca*, 1: 1-208.
- Vitt, D.H., 1993. Orthotrichaceae. In: *The Moss Flora of Mexico*, Sharp, A.J., H. Crum and P.M. Eckels (Eds.). New York Botanical Garden, New York, pp: 590-657.
- Weber, W.A., 1973. *Guide to the mosses of Colorado*. Keys and ecological notes based on field and herbarium studies. Institute of Arctic and Alpine Research of the University, Colorado, Occasional Paper No. 6, pp: 48.
- Zodda, G., 1913. Musci tripolitani a r. pampanini anno 1913 lecti. *Nuovo Giornale Giornale Botanico Italiano*, 20: 174-178.
- Zodda, G., 1914. Manipolo di briofite della tripolitania. *Bollettino dell'Orto Botanico*, 4: 205-209.
- Zodda, G., 1926. Di alcune briofite della cirenaica raccolte dal prof. cavara. *Bollettino dell'Orto Botanico*, 8: 235-238.