



Trends in  
**Applied Sciences  
Research**

ISSN 1819-3579



Academic  
Journals Inc.

[www.academicjournals.com](http://www.academicjournals.com)

## **A Study of Solar-ENSO Correlation Using Southern Brazil Tree-ring Index (1955-1994)**

<sup>1,2,3</sup>Nivaor Rodolfo Rigozo, <sup>2</sup>Heitor Evangelista da Silva, <sup>3</sup>Daniel Jean Roger Nordemann,  
<sup>1,3</sup>Mariza Pereira de Souza Echer, <sup>3</sup>Ezequiel Echer and <sup>3</sup>Alan Prestes  
<sup>1</sup>Faculdade de Tecnologia Thereza Porto Marques-FAETEC, CEP 12308-320, Jacareí, Brazil  
<sup>2</sup>LARAMG-Laboratório de Radioecologia e Mudanças Globais/Departamento de Biofísica  
e Biometria da Universidade do Estado do Rio de Janeiro (UERJ),  
Rio de Janeiro-RJ-Brazil CEP: 20550-013  
<sup>3</sup>Instituto Nacional de Pesquisas Espaciais-INPE, CP 515,  
12201-970 São José dos Campos, Brazil

---

**Abstract:** Solar activity, volcanic aerosol, El Niño-Southern Oscillation and global temperature anomalies effects on Southern Brazil tree growth rings are presented through multiple linear analysis. Linear correlations were made on annual, 10 year running averages and band pass filter. For annual averages, the correlation coefficients were low for the 10 years running average correlations the coefficient correlations were much higher. The multiple regression in the 2 to 5 year band pass data indicates that 60% of the variance in tree ring index was explained by volcanic eruptions, Southern Oscillation Index and temperature anomalies. The multiple regression of 10 year running averages indicates that 84% of the variance in tree ring index was explained by solar activity and another time series. These results indicate that the effects of solar activity, volcanic eruptions, ENSO and temperature anomalies on tree rings are better seen on long timescales than volcanic eruption, ENSO and temperature anomaly.

**Key words:** Tree-ring index, solar activity, El Niño, volcanic aerosol, spectrum analysis, time series

---

### **Introduction**

Around 76% of the surface of the Southern Hemisphere is covered by water. The interaction between ocean and atmosphere and specially the mechanisms of heat transport determine the patterns of present and past climates (Hamon and Godfrey, 1978). Due to this disparity in land area, the Southern Hemisphere climate is predominantly maritime than continental.

Much has been written about Northern Hemisphere climatic variations, but comparatively little is available on the Southern Hemisphere. A complete understanding of the climatic behavior of one hemisphere, however, is not possible without the knowledge of what happens in the other one (Pittock, 1978). A true understanding of climate change requires field experiments, empirical studies and theoretical models. Theoretical models provide a guide for empirical studies. Models may predict previously unsuspected relationships that experiments and empirical studies can either confirm or disprove. Advancement requires the interaction between theory, experiment and empirical models (Hoyt and Schatten, 1997).

The instrumental meteorological records available in the Southern Hemisphere are shorter and more spatially concentrated than in the Northern Hemisphere. Very few Southern Hemisphere temperature records extends back into the nineteenth century (Jones *et al.*, 1986). Working with such

---

**Corresponding Author:** Nivaor Rodolfo Rigozo, Faculdade de Tecnologia Thereza Porto Marques-FAETEC,  
CEP 12308-320, Jacareí, Brazil Tel/Fax: +55 12 3945 6810

short timescales, trends lasting decades to centuries are difficult to evaluate with statistical confidence. One way to study climatic variations and solar variations before the previous century is to utilize indirect sources or “proxy data” such as tree-rings. Tree rings vary in width each year depending on variations in local temperature and local precipitation. Some tree-ring growths are mostly controlled by temperature and others by precipitation, but generally the growth is controlled by a mixture of the two (Fritts, 1976).

In this study we perform a comparison between modeled and observed tree-ring index by accounting for additional natural forcings. That is important to evaluate the use of the tree-rings data as proxy data for climate and solar effects in Southern America.

### Data Set and Spectral Analysis

Our study makes use of five observational data sets: Tree-ring index (Fig. 1a), Zürich Sunspot Number (Rz) (Fig. 1b), global temperature anomalies (Fig. 1c), Southern Oscillation Index (SOI) (Fig. 1d) with representative of the El Niño and La Niña events and stratospheric aerosol optical depth measurements (Fig. 1e).

The trees used in this study were sampled from four locations in Rio Grande do Sul State, in Southern Brazil: nine samples from Canela (29°18'S, 50°51'W, 790 m asl), one sample from Nova Petrópolis (29°20'S, 51°10'W, 579 m asl), nine samples from São Francisco de Paula (29°25'S, 50°24'W, 930 m asl) and two samples from São Martinho da Serra (29°30'S, 53°53'W, 484 m asl) (Rigozo, 1998). A total of 21 samples were used in this study. Trees were native *Araucaria* trees (*Araucaria angustifolia*) of ages ranging from 30 to 39 year. Trees of this species with longer lifetime exist but because of the enforcement of laws on native species, it was not possible to sample older trees at the time of sampling. The methodology of polishing and treatment of the samples, as well as the digital image analysis of the scanned samples are described in Rigozo and Nordemann (1999) and Rigozo *et al.* (2001).

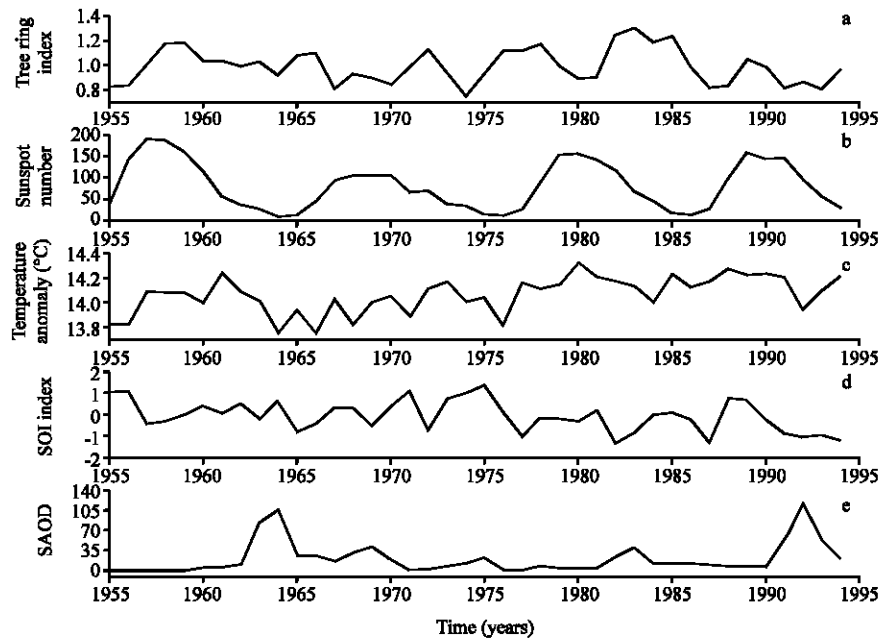


Fig. 1: Time series

Every time series was detrended using an exponential function to eliminate growth trends and periods longer than 25 year. A growth index for each radius time series and then averages by location and a global index for the region concerned were obtained.

Because long term climatic data for the collected samples are not available, our hypothesis about the climate response in the tree-ring data for this region is based on the global temperature anomalies. The annual global temperature anomalies come from about 4000 meteorological stations around the world. These data are an update of the analysis described by Hansen and Lebedeff (1987, 1988). These data are available in Goddard Institute for Space Studies (GISS).

The SOI is calculated from the monthly or seasonal fluctuations in the air pressure difference between Tahiti (20°S, 150°W) and Darwin (Australia, 10°S, 130°E). Positive values of SOI indicate La Niña events and negative values of SOI indicate El Niño events (Enfield, 1989; Neelin and Latif, 1998).

Sunspot data were obtained from The Sunspot Index Data Center-Brussels (World Data Center for the Sunspot Index). Sunspot number is the longest solar activity index available and it is a representative of the general state of solar activity (Hoyt and Schatten, 1997).

Volcanic eruption effect on the climate is represented by the stratospheric aerosol optical depth (SAOD) data set of Sato *et al.* (1993). The optical depth of the aerosol layer is considered to be the primary stratospheric aerosol climate forcing factor (Lacis *et al.*, 1992; Sato *et al.*, 1993). Major volcanic eruptions inject sulfur dioxide into the stratosphere, where, within a few weeks, it is converted to sulfate aerosol. This sulfate aerosol affects incoming solar radiation, reducing the amount reaching the earth's surface and thereby leading to a temperature reduction at the surface and throughout the lower troposphere (Mass and Portman, 1989; Dutton and Christy, 1992). The SAOD data set used in our analysis contains yearly average south hemisphere SAOD values covering the period from 1955 through 1994 (Sato *et al.*, 1993).

## Results

In order to determine the effect of solar activity, temperature, ENSO and SAOD on tree-ring index, a multivariate linear regression approach is used. Initially, spectral analysis in tree ring index time series is performed to determine the frequencies contained in the data. Figure 2 shows the amplitude as a function of frequency as determined by iterative regression analysis. It may be observed in the spectrum that there is no domination of long periods (>10 year) over the short

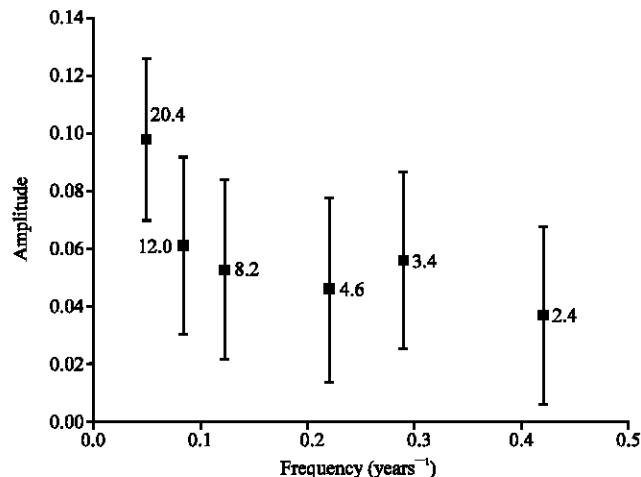


Fig. 2: Tree-ring index spectral analysis by iterative method

Table 1: Multiple regression results: 2 to 5 years band pass filtered data

R	0.777			
R-Square	0.604			
Prob>F	<0.0001			
Parameter	Value	Error	t-value	Prob> t
Intercept	5.0504E-4	0.01009	-0.05007	0.9604
Temperature	0.07035	0.00972	7.23747	<0.0001
SOI	-0.00448	0.00201	-2.22962	0.0321
SAOD	4.3191E-5	7.246E-4	0.05961	0.9528

Table 2: Multiple regression results to ten-year running averages

R	0.917			
R-Square	0.842			
Prob>F	<0.0001			
Parameter	Value	Error	t-value	Prob> t
Intercept	11.88638	1.9253	6.17387	<0.0001
Sunspot	0.00211	4.769E-4	4.42098	<0.0001
Temperature	-0.77845	0.1366	-5.69957	<0.0001
SOI	-0.02877	0.0042	-6.88016	<0.0001
SAOD	-0.00513	7.493E-4	-6.84379	<0.0001

ones (<10 year), or, in other terms, the long periods do not hide the low periods in the spectrum. The nature of this distribution suggests a favorable response on tree growth rate in South Brazil, to environmental factors for short and long periods. The tree-ring index from 1955 through 1994 is fit using the 10 year running averages and 2-5 year band pass filter. These 10 year running averages and band pass filtered data were also applied to Rz, temperature anomaly, SOI and SAOD. The 8.2 year periodicity was not included in the analyses because it is not caused by any natural phenomenon but it is caused man, because to every 8 years the reservations of tree from San Francisco of Paula and Canela in Brazil suffer cut of the forest to eliminate the sick trees in favor of the healthy ones (Rigozo, 1998).

We found that the Rz in combination with temperature anomaly, ENSO and with SAOD original series explained only 17.8% of the variation in the tree ring index data, but using the band pass filter of 2 to 5 year on that data the combined influence of those phenomena for low periods on the tree ring index increases for 60.3% (Table 1). The influence of those phenomena in the variation of the tree ring index for longer periods than 10 years is very large. Using the 10 years running average on the data 84.2% of the variation in the tree ring index data is explained (Table 2).

The cross-correlation coefficients between tree ring index and the time series, for the average 10 year running averages were: 0.70 to tree-ring index x Rz with a lag of 1 year, 0.65 tree-ring index temperature anomaly with a lag of 1 year, -0.82 tree-ring index x SOI index with a lag of 2 years and -0.77 tree ring index x SAOD with a lag of -4 years. The cross-correlation tree ring index and the time series for the 2-5 years band pass filtered data the were: 0.74 tree-ring index temperature anomaly with a lag of zero year, -0.45 tree-ring index x SOI index with a lag of -3 years and 0.47 tree ring index x SAOD with a lag of -2 years.

## Discussion

Rigozo *et al.* (2004), in studies on solar activity in tree ring data from Concórdia-Brazil (27° S, 51° W), have found a lag of zero year for the 11 years period, between sunspot number and tree ring width, which indicates that in the Concórdia region the growth of tree seems to follow immediately the sunspot activity variability. Rigozo *et al.* (2002), still studying the solar variability effects in the tree-ring data, from Concórdia-Brazil, found in the cross-wavelet spectral analysis between the tree ring data and sunspot number a high amplitude for the period close to 11 years, during the time interval 1940 to 1970. This represents a correspondence in the response of the growth of the

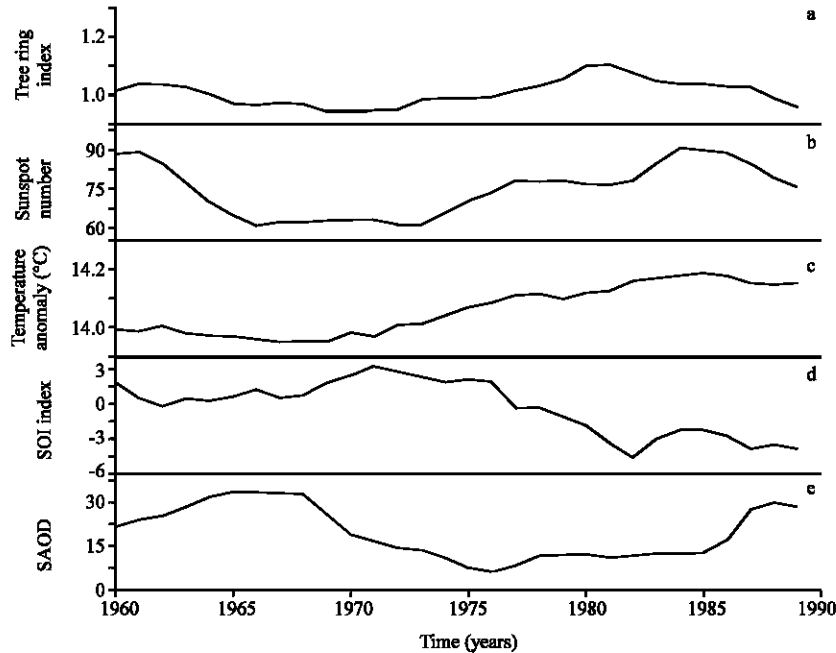


Fig. 3: Ten-year running averages

tree ring time series, for the interval of more intense solar activity. Murphy (1990), in studies on tree ring data from Australia, similarly have found low correlation coefficients between tree ring data and Sunspot number, around 0.16 and 0.22. Murphy and Veblen (1992) also have found a correlation coefficient of 0.2 between tree ring data, from Colorado-USA and sunspot number. They have attributed a strong 11 year periodic association between these two time series. The results found by us show a lag of zero year with a high positive correlation between the solar activity and tree ring data from Southern Brazil region. Figure 3 (a-b) shows that the tree-ring index increases and decreases when the Rz increases and decreases. It is also observed along trend in temperature anomaly (Fig. 3c), where the lag with tree ring index is one year with a high positive correlation.

When solar activity is maximum there is a higher radiative output of the Sun, at least as it was verified by satellite observations in the last two decades (Frölich and Lean, 1998). This higher radiative emission causes a heating in the most of Earth but it could make some regions to become colder. In the regions with heating during solar maximum, one may have two situations. In the warm latitudes, the heating might causes a smaller tree ring growth and an anti-correlation between tree ring width and sunspot number might be observed. In the cold latitudes, the heating might causes a higher tree ring growth and thus a positive correlation with sunspot number is observed. Thus, the regional/local conditions could influence on the climate response to the solar forcing (radiative) in this region.

The Southern Brazil is located in the temperate climate region. It presents a rigorous winter and summer periods. Temperature and other climate data are not available for this region in the long period studied in this work. One can only make some hypothesis about the climate response in this region to the solar forcing, based on the tree ring width variations. Thus, a small increase of the temperature in this area could favor in the growth of the trees, while a decrease of the temperature could cause an inhibition in the growth of the trees. The correlations obtained between tree ring data  $\times$  Rz, for long periods ( $>10$  years) and tree ring data  $\times$  temperature anomaly for long and short periods (Fig. 4b),

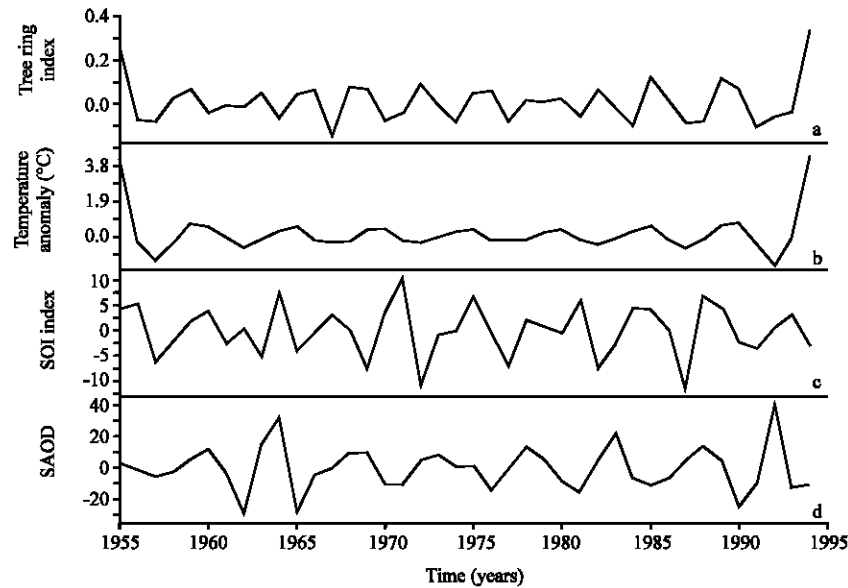


Fig. 4: 2 to 5 years band pass filtered data

suggest that the activity solar cause warming, through an radiation emission at every maximum of solar activity (Wilson and Hudson, 1988; Frölich and Lean, 1998), that is to say a temperature increase, in the south Brazil region, which influences an increase in the growth of the tree-rings.

Figure 3d and multivariate linear regression (Table 2) show an anti-correlation between tree ring index and SOI index with a lag of 2 years. It represents that the tree rings present a greater growth in epochs of El Niño. The southern of Brazil presents a larger amount of precipitation in epochs of El Niño. Trees have a larger amount of water available during summer causing a larger growth of its rings (Dai and Wigley, 2000).

Figure 3e and multivariate linear regression (Table 2) show that the volcanic activity presents a factor of negative influence in the tree rings growth for long periods. It is comprehensible because the main influence of the volcanic aerosols is a decrease in the temperature of the planet (Mass and Portman, 1989; Dutton and Christy, 1992). This decrease of the temperature would cause an inhibition in the growth of the trees giving an anti-correlation between tree ring index and SAOD. The signal of the multivariate linear regression for short periods (Fig. 4) shows that tree rings are more influenced by the temperature than by the SOI index and SAOD.

**Conclusions**

Solar activity, global temperature anomalies, ENSO and volcanic forcing explain nearly four-fifth (83%) of the variation in the tree-ring trend above ten years for the ten-year running averages. For the low periods, among 2 to 5 years, the global temperature anomalies, ENSO and volcanic forcing explain nearly two-thirds (60.3%) of the variation in the tree-ring data.

The correlations obtained between tree ring data x Rz, for long periods (>10 years) and tree ring data x temperature anomaly for long and short periods (Fig. 4b), suggest that the solar activity cause more warming, through more radiation emission at every solar activity maximum, that is to say a temperature increase, in Southern Brazil region, which causes an increase of tree growth ring. The multivariate linear regression (Table 2) showed an anti-correlation between tree ring index and SOI

index so that tree rings present a greater growth in epochs of El Niño. The volcanic activity presents a factor of negative influence in the tree rings growth for long periods inhibiting the growth of the trees, giving an anti-correlation between tree ring index and SAOD.

The signal of the multivariate linear regression for short periods (Table 1) shows that tree rings are more influenced by temperature than by the SOI index and SAOD. This shows that the tree ring growth is more sensitive to the temperature, than to volcanic eruptions and SOI Index.

### **Acknowledgments**

Thanks to Conselho Nacional de Desenvolvimento Científico e Tecnológico-CNPq for support granted to this research (Project APQ 474185/2003-6, PQ 300992/2003-3) and research fellowships (PDJ 150102/2005-4).

### **References**

- Dai, A. and T.M.L. Wigley, 2000. Global Patterns of ENSO-induced Precipitation, *Geophys. Res. Lett.*, 27: 1283-1286.
- Dutton, E.G. and J.R. Christy, 1992. Solar radiative forcing at selected locations and evidence for global lower tropospheric cooling following the eruptions of El Chichón and Pinatubo, *Geophys. Res. Lett.*, 19: 2313-2316.
- Enfield, D.B. and El Niño, 1989. Past and Present. *Rev. Geophys.*, 27: 159-187.
- Fritts, H.C., 1976. *Tree rings and climate*, Academic Press Inc., London.
- Frölich, C. and J. Lean, 1998. The sun's total irradiance cycles, trends and related climate change uncertainties since 1976. *Geophys. Res. Lett.*, 97: 7579-7591.
- Hamon, B.V. and J.S. Godfrey, 1978. The Role of the Oceans. In: *Climatic Change and Variability*. Pittock, A.B. *et al.* (Eds.). A Southern Perspective. Cambridge, Cambridge University, pp: 31-52.
- Hansen, J. and S. Lebedeff, 1987. Global trends of measured surface air temperature. *J. Geophys. Res.*, 92: 13345-13372.
- Hansen, J. and S. Lebedeff, 1988. Global surface air temperatures: Update through 1987. *J. Geophys. Res.*, 15: 323-326.
- Hoyt, D.V. and K.H. Schatten, 1997. *The role of the sun in climate change*. Oxford University Press, Oxford, pp: 280.
- Jones, P.D., S.C.B. Raper, C.M. Goodess, B.S.G. Cherry and T.M.L. Wigley, 1986. A grid point surface air temperature data set for the Southern Hemisphere. DOE Technical Report N° TR027. Washington, D.C., U.S. Dept. of Energy, Carbon Dioxide Research Division, pp: 73.
- Lacis, A., J. Hansen and M. Sato, 1992. Climate forcing by stratospheric aerosols, *Geophys. Res. Lett.*, 19: 1607-1610.
- Mass, C.F. and D.A. Portman, 1989. Major volcanic eruptions and climate: A critical evaluation. *J. Climate*, 2: 566-593.
- Murphy, J.O., 1990. Australian tree ring chronologies a proxy data for solar variability. *Proceedings ASA*, 8: 292-297.
- Murphy, J.O. and T.T. Veblen, 1992. Proxy Data from Tree-ring time series for the eleven-year solar cycle. *Proceedings ASA*, 10: 64-67.
- Neelin, J.D. and M. Latif, 1998. El Niño dynamics. *Physics Today*, 51: 32-36.
- Pittock, A.B., 1978. An overview. In: *Climatic Change and Variability*. Pittock, A.B. *et al.* (Eds.). A Southern Perspective. Cambridge, Cambridge University, pp: 1-6.



- Rigozo, N.R., 1998. Registros da atividade solar e de outros fenômenos geofísicos em anéis de árvores, Ph.D Thesis (Doctorate in Space Geophysics)-National Institute for Space Research, Brazil, pp: 132.
- Rigozo, N.R. and D.J.R. Nordemann, 1999. Solar activity records in tree-rings. *Revista Geofísica-Instituto Panamericano de Geografía e Historia (México)*, 50: 163-170.
- Rigozo, N.R., D.J.R. Nordemann, E. Echer, L.E.A. Vieira and A. Prestes, 2001. Tree Ring Image Interactive Treatment. In: 6th Latin America Conference on Space Geophysics, GA-26, Concepción.
- Rigozo, N.R., D.J.R. Nordemann, E. Echer, A. Zanandrea and W.D. Gonzalez, 2002. Solar variability effects studied by tree-ring data wavelet analysis, *Advances in Space Research*, 29: 1985-1988.
- Rigozo, N.R., D.J.R. Nordemann, E. Echer and L.E.A. Vieira, 2004. Search for Solar Periodicities in Tree-Ring Widths from Concórdia (S.C., Brazil). *Pure Applied in Geophysics*, 161: 221-233.
- Sato, M., J.E. Hansen, M.P. McCormick and J.B. Pollack, 1993. Stratospheric aerosol optical depths, 1850-1990. *J. Geophys. Res.*, 98: 22987-22994.
- Wilson, R.C. and H.S. Hudson, 1988. Solar luminosity variations in solar cycle 21. *Nature*, 332: 810-812.